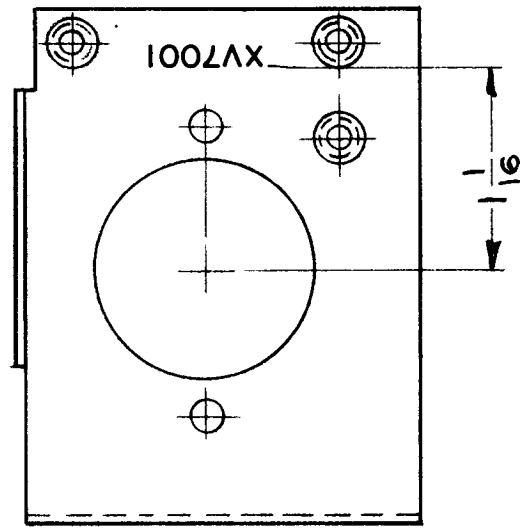
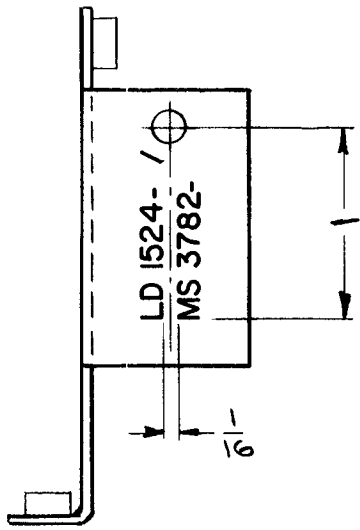
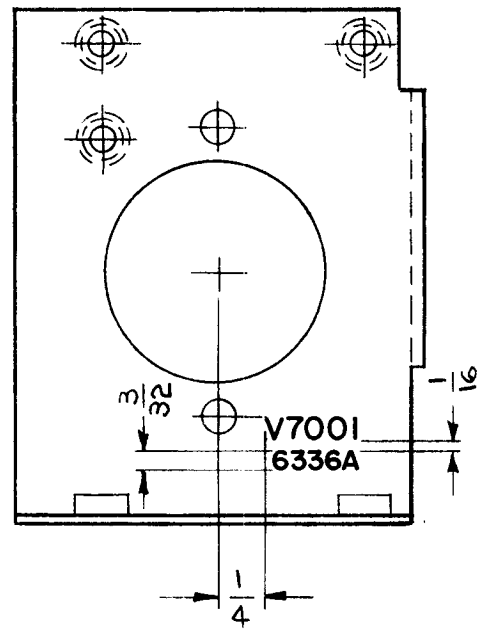


REQ. PER UNIT	USED ON			LD 1524 $\emptyset$
	MODEL	ASS'Y. NO.	DATE	
1	SBS-7	A2885	4-22-64	



**UNLESS OTHERWISE SPECIFIED:**  
**MARKING PROCESS: AS PER TMC SPECIFICATION S-727.**  
**LETTERING: 1/8 HIGH BLACK GOTHIC, LOCATED AS SHOWN.**  
 MARK TMC PART NO WITH LATEST REVISION LETTERS, 1/8 HIGH BLACK GOTHIC.

REF: MS 3782 (1)

REQ.	ITEM	PART NO.	O. POSE				DESCRIPTION	SYMBOL
			STOCK SIZE				THE TECHNICAL MATERIEL CORP. MAMARONECK, NEW YORK	
$\emptyset$	ORIGINAL RELEASE	11/1/65						
X	EXPER. RELEASE	4-22-64	1	<i>John</i>				
SYM	DESCRIPTION	DATE	CH. NO.	DRAFTS	CHECKER	ENG. APP.		
UNLESS OTHERWISE SPECIFIED DIMENSIONS ARE IN INCHES AND INCLUDE CHEMICALLY APPLIED OR PLATED FINISHES		SCALE	1:1					
DECIMALS: .X $\pm$ .05 .XX $\pm$ .01 .XXX $\pm$ .005		FRACTIONS $\pm$ 1/64 ANGLES $\pm$ 0° 30'	CODE A					
TOLERANCES				TYPE & TEMPER		HEAT TREAT. SPEC.	FINISH & SPEC. NO.	
				<i>G. Swan</i>		<i>John</i>	<i>MM</i>	
				DRAWN		CHECKED	FINAL APPROVAL	
				<i>SD</i>		<i>SD</i>	LD 1524 $\emptyset$	
				ELEC. DES. APP.		MECH. DES. APP.		