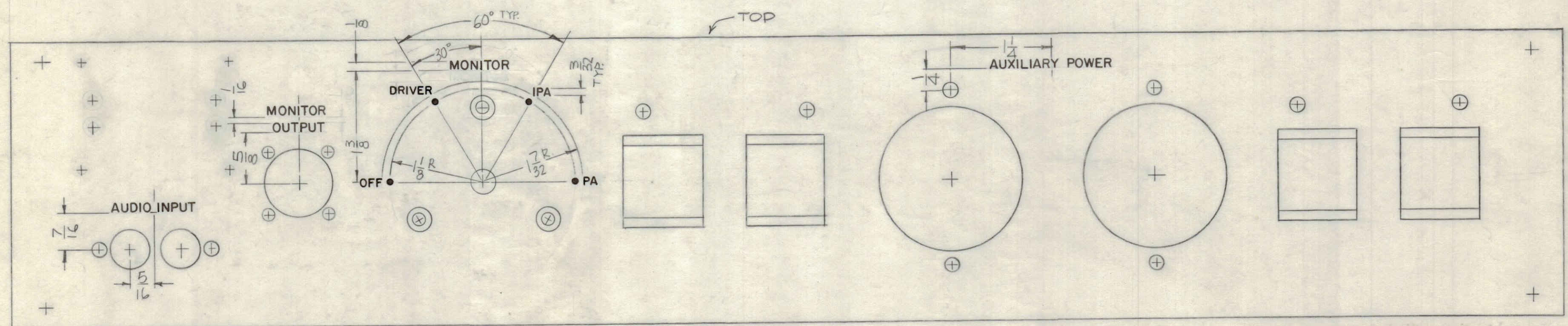
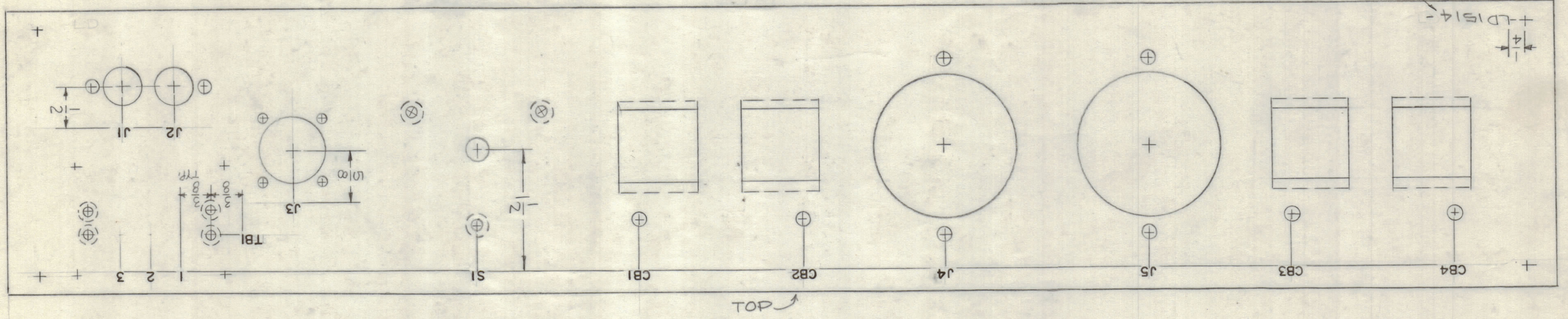


REVISIONS							
SYM	ZONE	DESCRIPTION	DATE	E.M.N.NO.	DRAFT	CHKD	APPD
X		EXP. RELEASE	12-22-66				
Ø		ORIGINAL RELEASE FOR PRODUCTION	3-1-67		L.A.K.		

MARKING PROCESS: AS PER TMC SPECIFICATION S-727.
 LETTERING: 1/8 HIGH BLACK GOTHIC, LOCATED AS SHOWN.

MARKING
REAR VIEW



ENGRAVING
FRONT VIEW

- UNLESS OTHERWISE SPECIFIED:
 1- ALL ENGRAVING AS PER TMC SPEC. S-566
 2- ALL LETTERING TO BE 1/8 HIGH GOTHIC.
 3- ALL LETTER GROUPS TO BE CENTERED ON HOLES.
 4- ENGRAVING TO BE WHITE FILLED.

LETTER HEIGHT	DEPTH OF STROKE	WIDTH OF STROKE
3/32	.010	.015
1/8	.010	.020
DOTS	.010	1/16 DIA.

MAXIMUM ALLOWABLE TOLERANCES HAVE BEEN DETERMINED AND ANY DEVIATIONS WILL BE CAUSE FOR REJECTION.

REF. MS 6053-

QTY REQ	ITEM	PART NO.	DESCRIPTION	SYMBOL
F. BUDETTI BILL OF MATERIAL				
FINAL APPROVAL		DATE	THE TECHNICAL MATERIEL CORP. MAMARONECK, NEW YORK MARKING, PANEL, FRONT MARKING PROCESS: ENGRAVING APP-10A	
MECH. DES.		DATE		
ELECT. DES.		DATE		
CHECKED		DATE		
DRAWN		DATE	CODE 82679	
FINISH		DATE	SIZE C	
		DATE	DWG. NO. LD 1514	
		DATE	SCALE	
		DATE	SHEET OF	