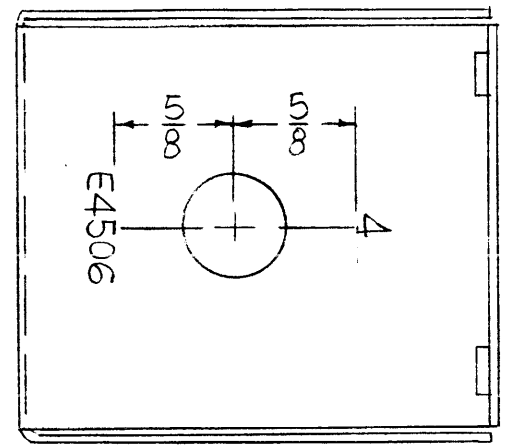
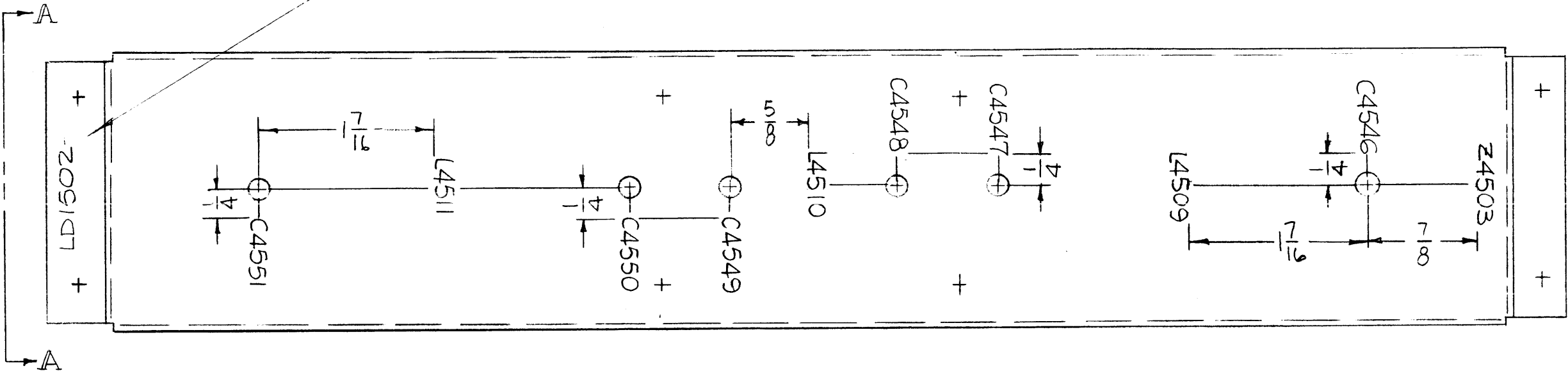


VIEW-A-A

MARK TMC P/N  
1/8 HIGH GOTHIC  
W/LATEST REV.  
LETTER.



LD1502  
X

REVISIONS						
SYM	DESCRIPTION	DATE	E.M.N. NO.	DRAFT	CHKD	APPD
X	EXP. RELEASE	10-10-66	X	<i>[Signature]</i>	W	<i>[Signature]</i>
Ø	ORIGINAL RELEASE	5-9-73		CS		

MARKING PROCESS: AS PER TMC SPECIFICATION S-727.  
LETTERING: 1/8 HIGH BLACK GOTHIC, LOCATED AS SHOWN.

NOTES

Q'TY./UNIT	1	MODEL USED ON	TFP-2.5K	ASS'Y. NO.	
SCALE	1:1	CODE	S401-451 S401- S401-		
THE CONTENTS OF THIS DRAWING ARE THE EXCLUSIVE PROPERTY OF THE TECHNICAL MATERIEL CORP. ITS UNAUTHORIZED USE OR REPRODUCTION IN WHOLE OR IN PART IS STRICTLY FORBIDDEN.					

REF: MS 5062

REQ'D.	ITEM	PART NUMBER	DESCRIPTION	SYMBOL
F. BUDETTI LIST OF MATERIAL				
MATERIAL			THE TECHNICAL MATERIEL CORP. MAMARONECK, NEW YORK	
FINISH			TITLE MARKING, BOX FILTER AS PER TMC SPEC. S-727	
UNLESS OTHERWISE SPECIFIED DIMENSIONS ARE IN INCHES AND INCLUDE CHEMICALLY APPLIED OR PLATED FINISHES			DRAWN <i>[Signature]</i> DATE 9-29-66 CHECKED <i>[Signature]</i> DATE ELECT. DES. DATE MECH. DES. DATE	FINAL APPROVAL <i>[Signature]</i> DATE 5/9/73 SHEET LD1502 REV. LTR. Ø
DECIMALS	TOLERANCES		FRACTIONS	
.X ± .05 .XX ± .01 .XXX ± .005			± 1/64 ANGLES ± 0° 30'	