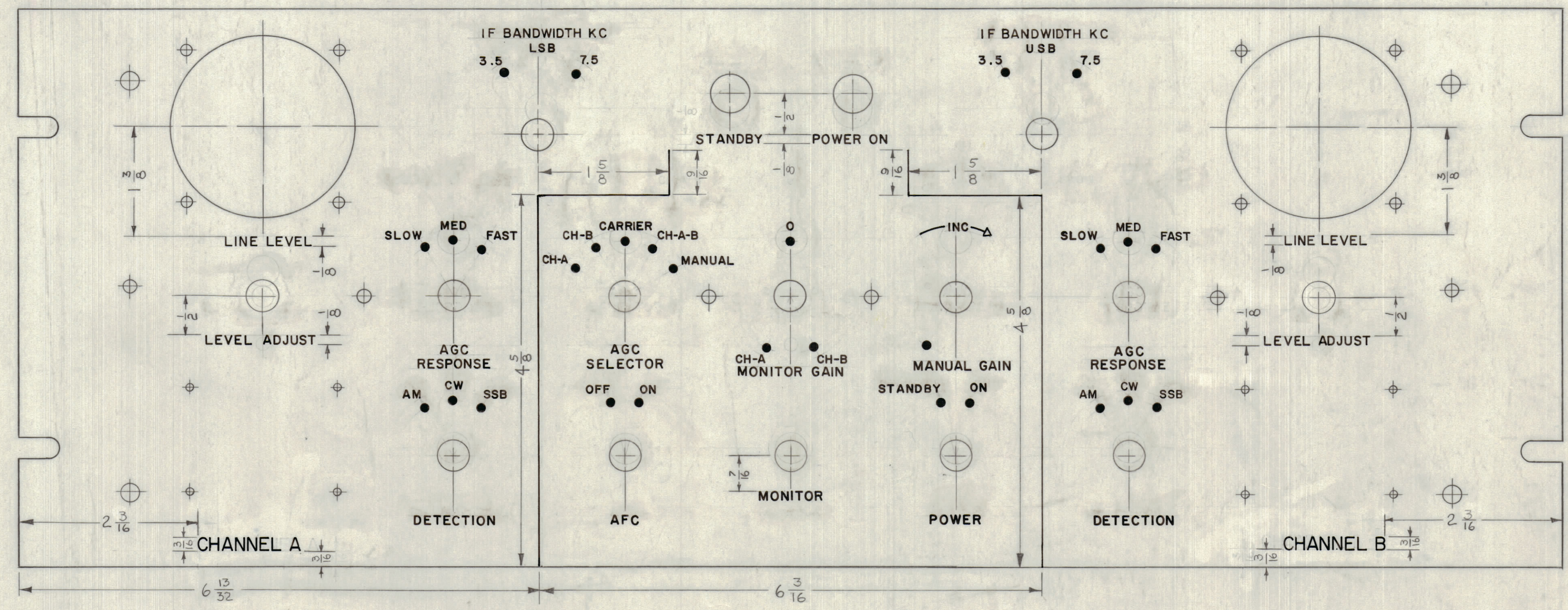
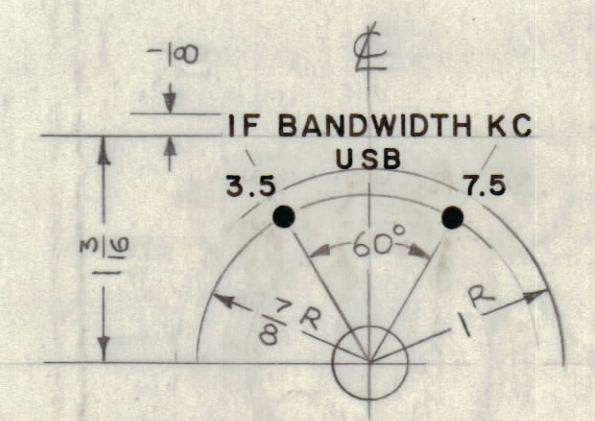
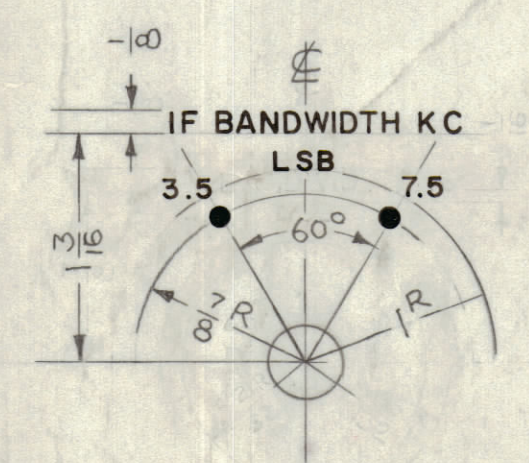
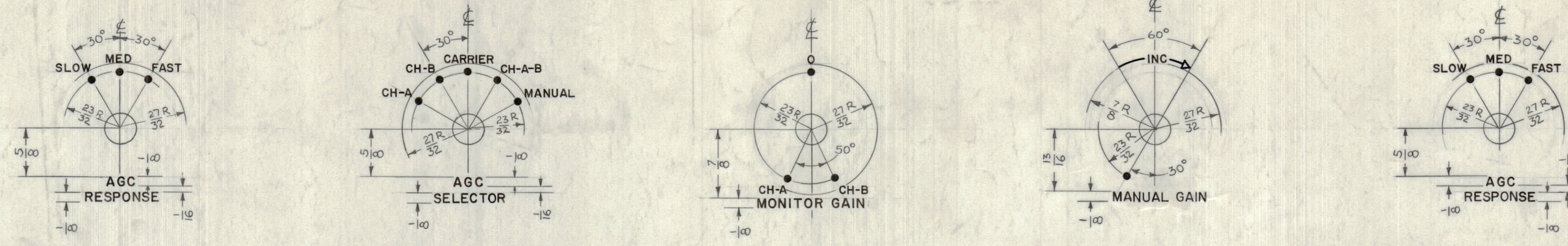
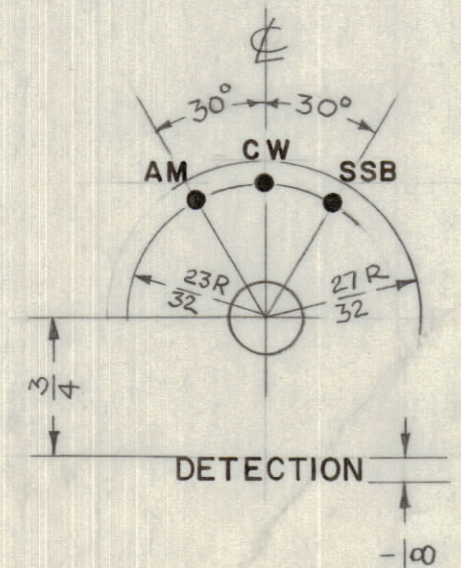
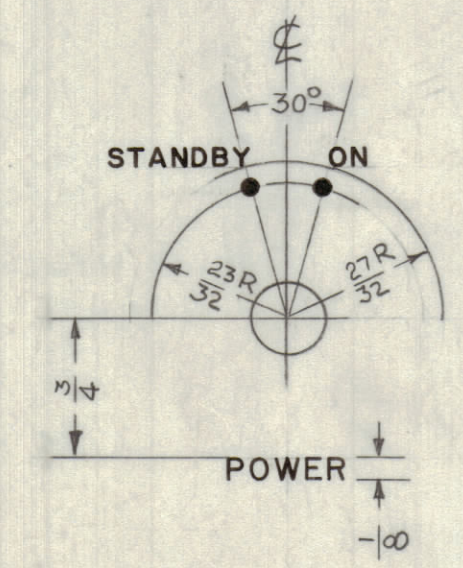
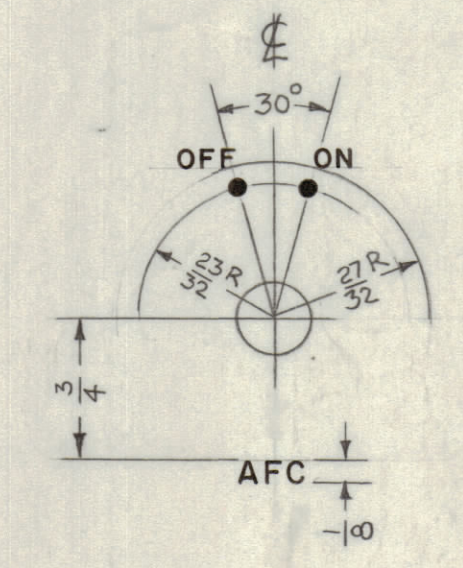
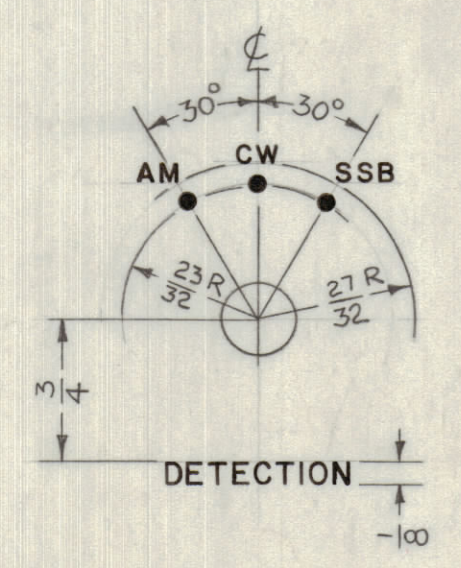


REVISIONS									
ZONE	SYM	DESCRIPTION	DATE	E.M.N. NO.	DRAFT	CHKD	APPD		
+	X	EXPER. RELEASE	4-14-44	1					
+	XI	SEE SHEET 2 OF 2, REVISION "XI"	5-19-44	2					
+		ORIGINAL RELEASE FOR PRODUCTION	11-17-45						
U443	A	CH. A+B DIM. WAS 2 7/16	7-20-44	16593					



UNLESS OTHERWISE SPECIFIED:
 1-ALL ENGRAVING TO BE 3/32 WHITE FILLED GOTHIC
 2-ALL DOTS TO BE WHITE FILLED
 3-ALL LINES TO BE WHITE FILLED
 4-ALL ARROWHEADS 3/32 X 5/32 WHITE OUTLINED FILLED

LETTER HEIGHT	DEPTH OF STROKE	WIDTH OF STROKE
3/32	.010	.015
1/8	.010	.020
3/16	.010	.025
DOTS	.010	1/16 DIA.
LINES	.010	.015
ARROWHEADS	.010	



NOTES

QTY./UNIT	MODEL USED ON	ASSY. NO.
SCALE	CODE	
1:1	A	

REF: M5 3746 (B)				
REQ'D.	ITEM	PART NUMBER	DESCRIPTION	SYMBOL
O. POSE LIST OF MATERIAL				
MATERIAL		THE TECHNICAL MATERIEL CORP. MAMARONECK, NEW YORK		
FINISH		TITLE MARKING, PANEL, FRONT MARKING METHOD, ENGRAVING		
UNLESS OTHERWISE SPECIFIED DIMENSIONS ARE IN INCHES AND INCLUDE CHEMICALLY APPLIED OR PLATED FINISHES		DRAWN	DATE	FINAL APPROVAL
DECIMALS ±.08 FRACTIONS ± 1/64 ANGLES ± 0° 30'		DATE	DATE	DATE
TOLERANCES		ELECT. DES.	DATE	
		MECH. DES.	DATE	
		LD 1489		A
		SHEET 1 OF 2		REV. LTR.

LD 1489 A