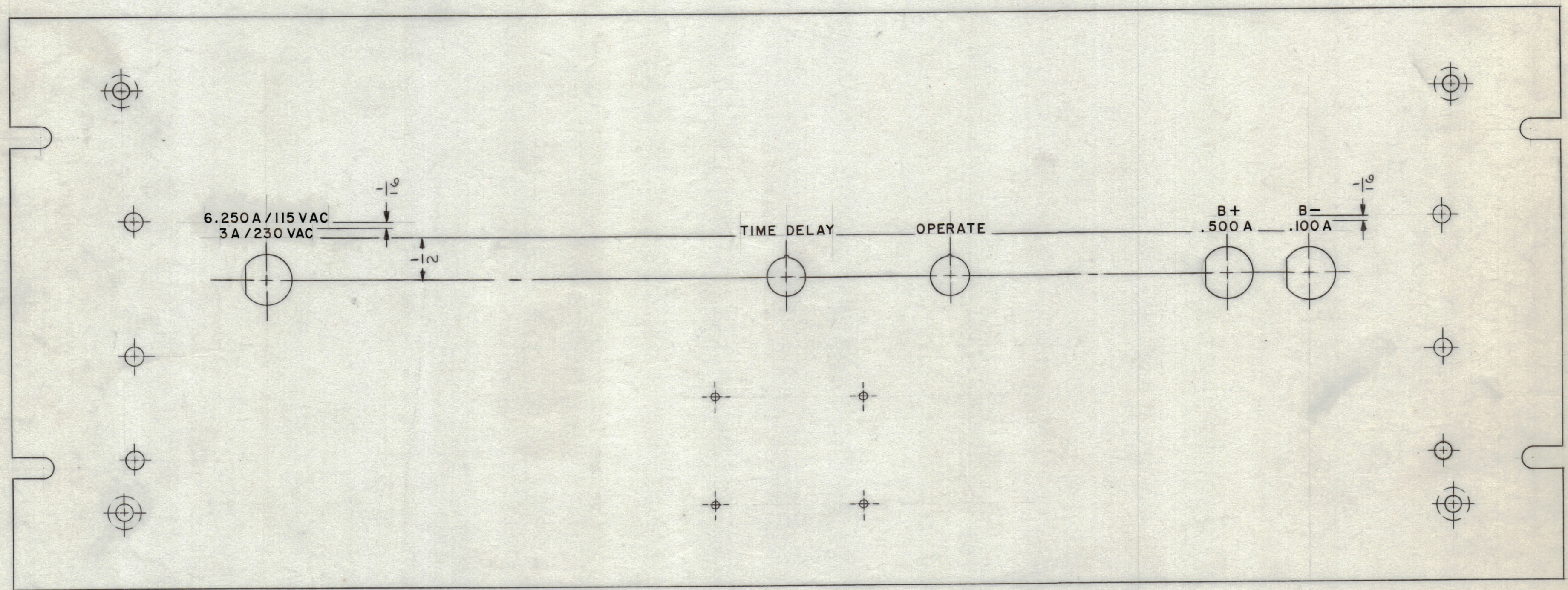


PRELIMINARY DRAWING
Not For Production

REVISIONS						
ZONE	SYM	DESCRIPTION	DATE	E.M.N. NO.	DRAFT	CHKD
	X	EXPERIMENTAL RELEASE	4-29-64		WSB	@
	Ø	ORIGINAL RELEASE FOR PRODUCTION	9-2-64	Ø	JL	



HEIGHT OF LETTERS	DEPTH OF STROKE	WIDTH OF STROKE
1/8	.010	.020
LINES	.010	.020

~ UNLESS OTHERWISE SPECIFIED ~
 1- ALL LETTERING TO BE 1/8 HIGH GOTHIC, WHITE FILLED.
 2- ALL LETTERING GROUPS TO BE CENTERED ON HOLES.

REF. MS 3694

REQ'D.	ITEM	PART NUMBER	DESCRIPTION	SYMBOL
T. A. LTONEN LIST OF MATERIAL				
MATERIAL		THE TECHNICAL MATERIEL CORP. MAMARONECK, NEW YORK		
FINISH		TITLE MARKING, PANEL FRONT MARKING METHOD - ENGRAVING		
DRAWN	J. LESHINSKI	DATE	1/23/64	FINAL APPROVAL
CHECKED	@	DATE	2/7-64	
ELECT. DES.	JKA	DATE	2/7-64	LD-1448
MECH. DES.	JL	DATE	2-4-64	Ø
SHEET 1 OF 2				REV. LTR.

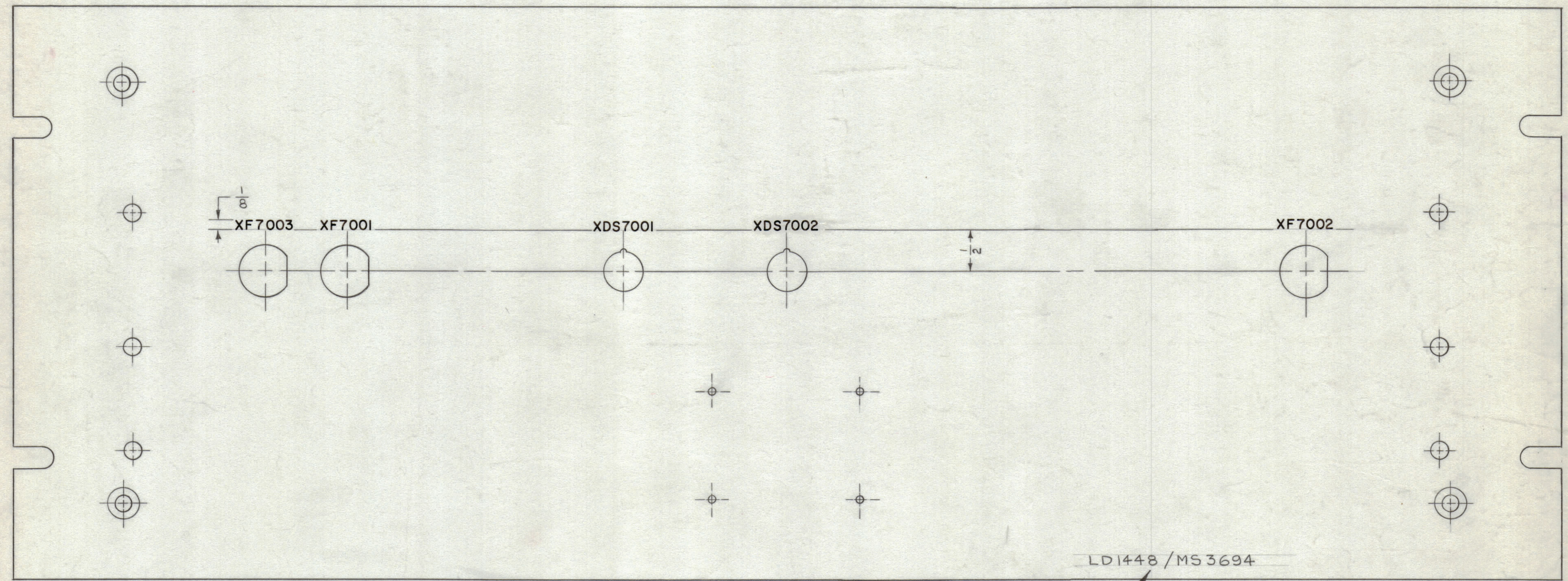
Q'TY./UNIT	MODEL USED ON	ASS'Y. NO.
1	MFP-1	
SCALE	CODE	
1:1	A	

THE CONTENTS OF THIS DRAWING ARE THE EXCLUSIVE PROPERTY OF THE TECHNICAL MATERIEL CORP. ITS UNAUTHORIZED USE OR REPRODUCTION IN WHOLE OR IN PART IS STRICTLY FORBIDDEN.

NOTES

LD 1448 Ø

REVISIONS					
ZONE	SYM	DESCRIPTION	DATE	E.M.N. NO.	APPD
	X	EXPERIMENTAL RELEASE	4.29.64	WB	186
	Ø	ORIGINAL RELEASE FOR PRODUCTION	9.2.64	AL	



REAR VIEW AS SHOWN

LD1448/MS3694

STAMP TMC PART NO. 1/8 HIGH GOTHIC.

MARKING PROCESS: AS PER TMC SPECIFICATION S-727.
 LETTERING: 1/8 HIGH BLACK GOTHIC, LOCATED AS SHOWN.
 ALL LETTERING TO BE CENTERED ON HOLES

REF. MS3694

Q'TY./UNIT	MODEL USED ON	ASS'Y. NO.
1	MFP-1	
SCALE 1:1	CODE A	

THE CONTENTS OF THIS DRAWING ARE THE EXCLUSIVE PROPERTY OF THE TECHNICAL MATERIEL CORP. ITS UNAUTHORIZED USE OR REPRODUCTION IN WHOLE OR IN PART IS STRICTLY FORBIDDEN.

REQ'D.	ITEM	PART NUMBER	DESCRIPTION	SYMBOL
T. AALTONEN LIST OF MATERIAL				
MATERIAL		THE TECHNICAL MATERIEL CORP. MAMARONECK, NEW YORK		
FINISH		TITLE MARKING, PANEL, FRONT MARKING METHOD TMC S-727		
UNLESS OTHERWISE SPECIFIED DIMENSIONS ARE IN INCHES AND INCLUDE CHEMICALLY APPLIED OR PLATED FINISHES		DRAWN WB	DATE 4.28.64	FINAL APPROVAL
DECIMALS .X ± .05 .XX ± .01 .XXX ± .005		CHECKED @	DATE 4.29.64	
FRACTIONS ± 1/64 ANGLES ± 0° 30'		ELECT. DES. JKA	DATE 4/29/64	LD1448
TOLERANCES		MECH. DES. RFS	DATE 4-31-64	Ø
SHEET 2 OF 2				REV. LTR.

NOTES

H
G
F
E
D
C
B
A

H
G
F
E
D
C
B
A

LD1448