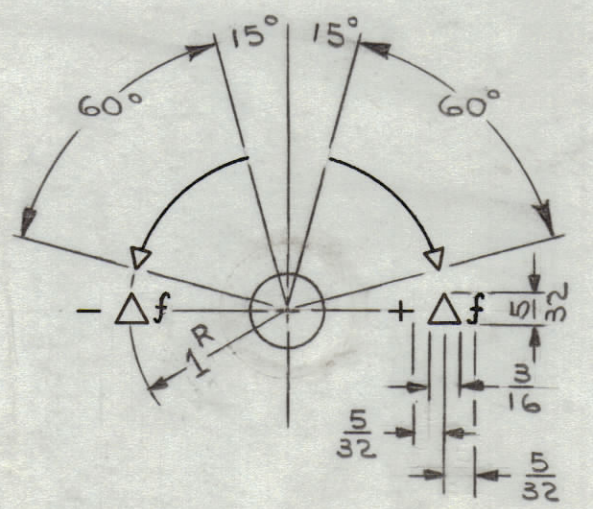
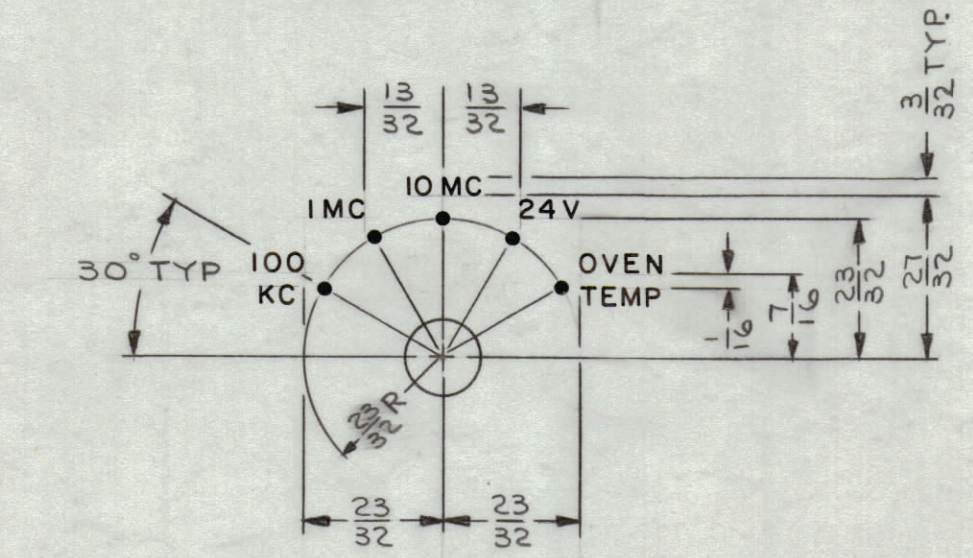
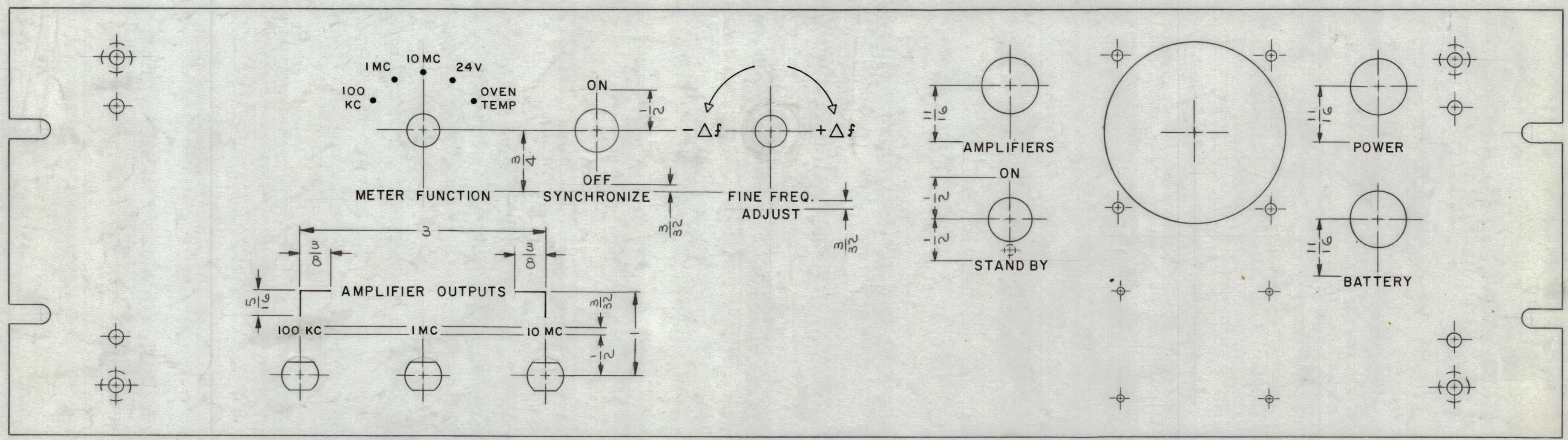


| REVISIONS | | | | | | |
|-----------|-----|--|---------|------------|-------|-----------|
| ZONE | SYM | DESCRIPTION | DATE | E.M.N. NO. | DRAFT | CHKD APPD |
| D-4,3 | X1 | 1 R OF FINE FREQ ADJ. DETAIL WAS 13/16 R | 1-24-64 | | NP | |
| # | Ø | ORIGINAL RELEASE FOR PRODUCTION | 6/25/64 | Ø | A.M. | |
| E6,5 | A | 3 HOLES REVISED TO AGREE W/ MS3708-A | 1.4.65 | 13214 | JB | |



FRONT VIEW AS SHOWN

| HEIGHT OF LETTERS | DEPTH OF STROKE | WIDTH OF STROKE |
|-------------------|-----------------|-----------------|
| 3/32 | .010 | .015 |
| 1/8 | .010 | .020 |
| DOTS | .010 | 1/16 DIA |
| LINEWORK | .010 | .015 |
| ARROWHEADS | .010 | |

- ~ UNLESS OTHERWISE SPECIFIED ~
- 1-ENGRAVING TO BE 1/8 HIGH GOTHIC, WHITE FILLED.
 - 2-ALL LETTER GROUPS TO BE CENTERED ON HOLES.
 - 3-DOTS 100KC THRU 10MC TO BE RED FILLED, ALL OTHERS TO BE FILLED IN WHITE.
 - 4-LINEWORK TO BE WHITE FILLED, WITH EXCEPTION OF BRACKETS 5/16 X 3/8 OF AMPLIFIER OUTPUTS WHICH ARE TO BE FILLED IN RED.
 - 5-ARROWHEADS & ALL OTHER SYMBOLS TO BE WHITE FILLED.

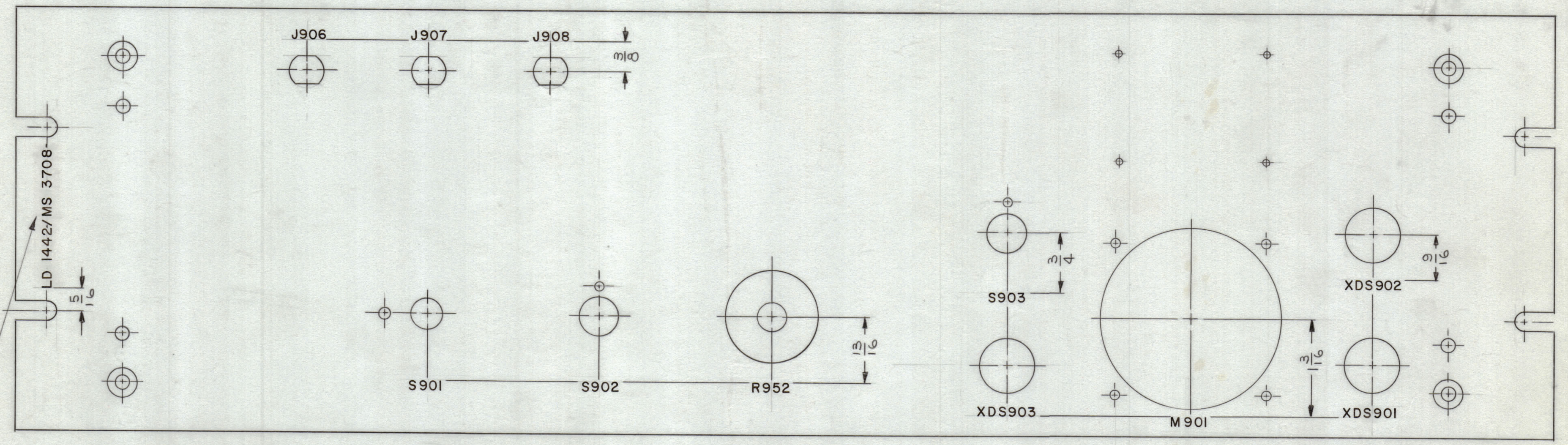
REF: MS 3708

| REQ'D. | ITEM | PART NUMBER | DESCRIPTION | SYMBOL |
|---|------|--|------------------|------------------------|
| M. GELLMAN LIST OF MATERIAL | | | | |
| MATERIAL | | THE TECHNICAL MATERIEL CORP. MAMARONECK, NEW YORK | | |
| FINISH | | TITLE MARKING, PANEL, FRONT MARKING METHOD-ENGRAVING | | |
| UNLESS OTHERWISE SPECIFIED DIMENSIONS ARE IN INCHES AND INCLUDE CHEMICALLY APPLIED OR PLATED FINISHES | | DRAWN J. LESHINSKI | DATE 12/30/63 | FINAL APPROVAL DATE |
| DECIMALS .X ± .05 .XX ± .01 .XXX ± .005 | | CHECKED DATE 6-24-64 | DATE 1-3-64 | DATE |
| TOLERANCES ± 1/64 ANGLES ± 0° 30' | | ELECT. DES. MECH. DES. | DATE | DATE |
| SHEET 1 OF 2 | | | | LD 1442 A |

| Q'TY./UNIT | MODEL USED ON | ASS'Y. NO. |
|--------------|---------------|------------|
| 1 | CSS-2 | |
| SCALE 1:1 | CODE A | |

NOTES

| REVISIONS | | | | | | |
|-----------|-----|---|---------|------------|-------|--------------------|
| ZONE | SYM | DESCRIPTION | DATE | E.M.N. NO. | DRAFT | CHKD APPD |
| | XI | SEE SHEET 1 FOR REVISION PRODUCTION | 6.8.64 | XI | hSB | |
| # | Ø | ORIGINAL RELEASE FOR PRODUCTION | 8/25/64 | Ø | A.M. | |
| G, G, 5 | A | 3 HOLES REVISED TO AGREE WITH MS 3708-A | 1.4.65 | 13214 | hSB | <i>[Signature]</i> |



REAR VIEW AS SHOWN

MARK TMC PART NO. WITH LATEST REVISION LETTERS.

UNLESS OTHERWISE SPECIFIED

MARKING PROCESS: AS PER TMC SPECIFICATION S-727.
 LETTERING: 1/8 HIGH BLACK GOTHIC, LOCATED AS SHOWN.

REF. MS-3708

| REQ'D. | ITEM | PART NUMBER | DESCRIPTION | SYMBOL |
|---|------|--|-----------------|--------------------------------------|
| M. GELLMAN LIST OF MATERIAL | | | | |
| MATERIAL | | THE TECHNICAL MATERIEL CORP. MAMARONECK, NEW YORK | | |
| FINISH | | TITLE MARKING, PANEL, FRONT MARKING METHOD - TMC S-727 | | |
| UNLESS OTHERWISE SPECIFIED DIMENSIONS ARE IN INCHES AND INCLUDE CHEMICALLY APPLIED OR PLATED FINISHES | | DRAWN J. LESHINSKI | DATE 4/15/64 | FINAL APPROVAL <i>[Signature]</i> |
| DECIMALS .X ± .05 .XX ± .01 .XXX ± .005 | | CHECKED <i>[Signature]</i> | DATE 6-24-64 | DATE LD-1442 |
| FRACTIONS ± 1/64 ANGLES ± 0° 30' | | ELECT. DES. <i>[Signature]</i> | DATE 6-29-64 | REV. LTR. A |
| TOLERANCES | | MECH. DES. <i>[Signature]</i> | DATE | SHEET 2 OF 2 |

| QTY./UNIT | MODEL USED ON | ASS'Y. NO. |
|-----------|---------------|------------|
| SCALE 1:1 | CODE A | |

NOTES

THE CONTENTS OF THIS DRAWING ARE THE EXCLUSIVE PROPERTY OF THE TECHNICAL MATERIEL CORP. ITS UNAUTHORIZED USE OR REPRODUCTION IN WHOLE OR IN PART IS STRICTLY FORBIDDEN.