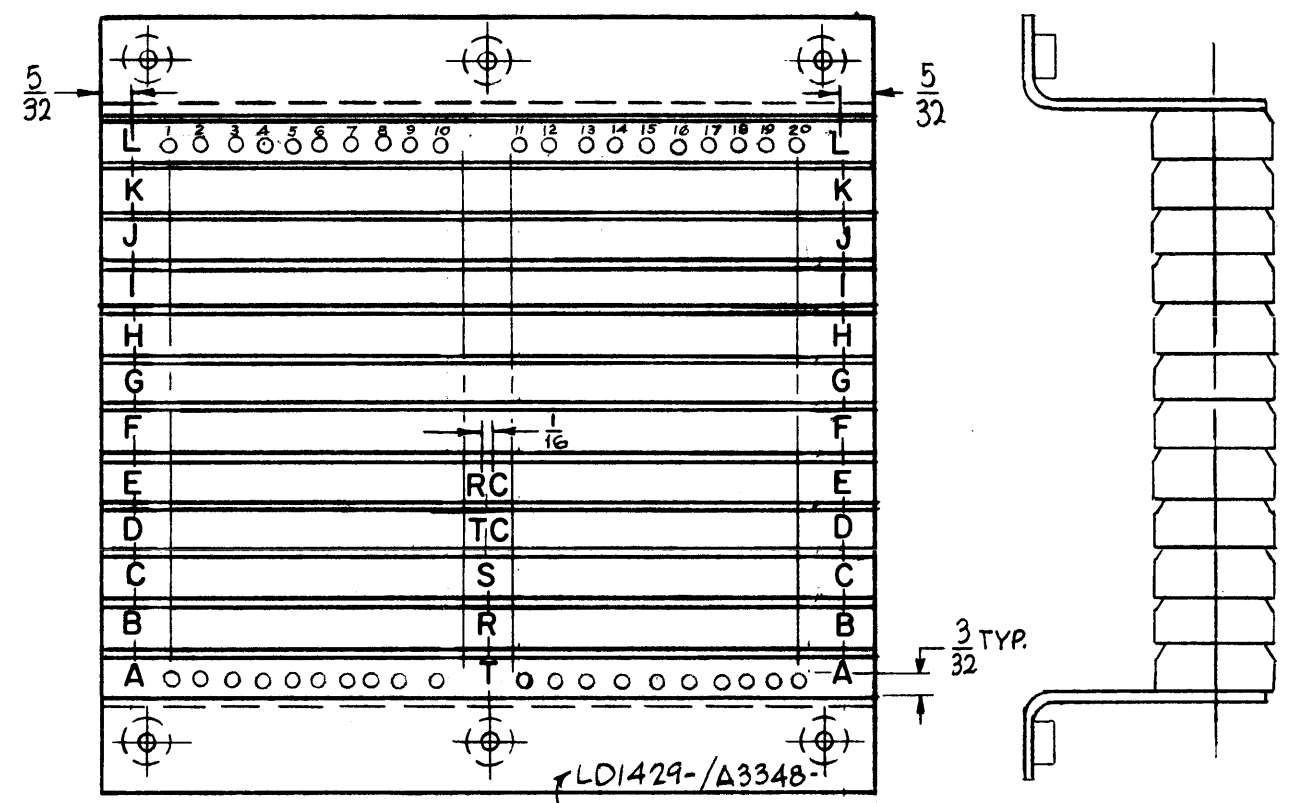


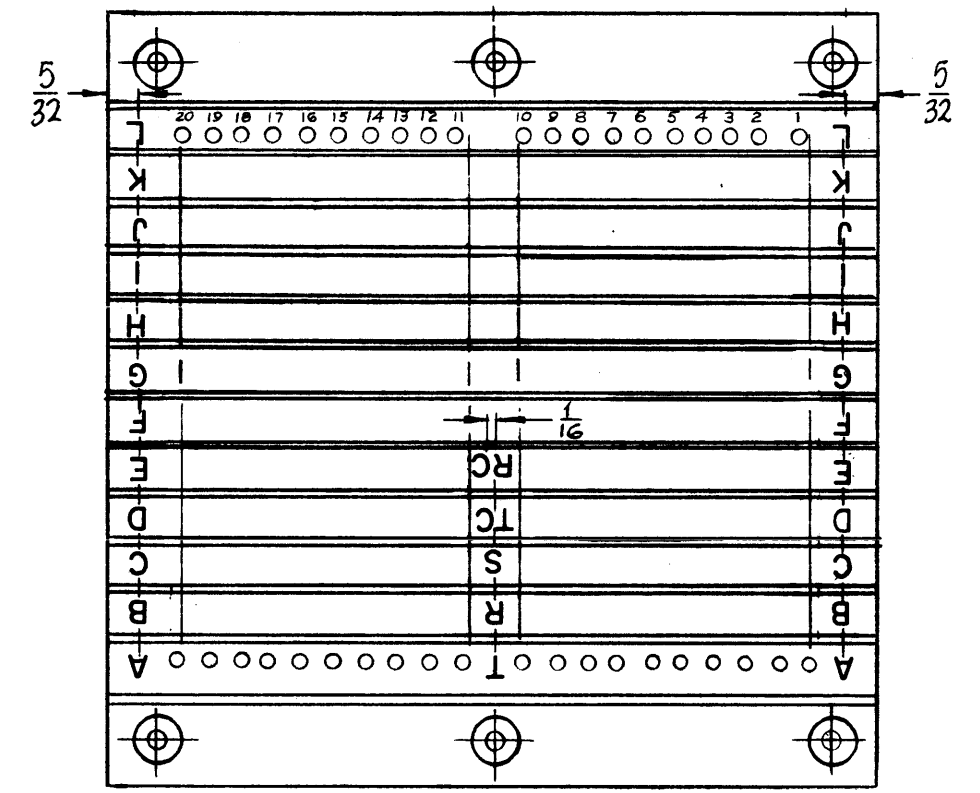
LD 1429

REVISIONS

SYM	DESCRIPTION	DATE	E.M.N. NO.	DRAFT	CHKD	APPD
X	EXPERIMENTAL RELEASE	3-24-64		A.M.		
Ø	ORIGINAL RELEASE FOR PRODUCTION	6-10-65		JC		



TOP VIEW
 MARK TMC PT. NO 1/8 HIGH BLACK GOTHIC W/LATEST REV. LETTERS.



BOTTOM VIEW

UNLESS OTHERWISE SPECIFIED:
 LETTERING TO BE 1/8 HIGH
 WHITE GOTHIC PER TMC SPEC. S-727
 LOCATED AS SHOWN

REF: A-3348

I	LPP-4	
Q'TY./UNIT	MODEL USED ON	ASS'Y. NO.
SCALE 1:1	CODE	
THE CONTENTS OF THIS DRAWING ARE THE EXCLUSIVE PROPERTY OF THE TECHNICAL MATERIEL CORP. ITS UNAUTHORIZED USE OR REPRODUCTION IN WHOLE OR IN PART IS STRICTLY FORBIDDEN.		

REQ'D.	ITEM	PART NUMBER	DESCRIPTION	SYMBOL
I. JOHNSON LIST OF MATERIAL				
MATERIAL		THE TECHNICAL MATERIEL CORP. MAMARONECK, NEW YORK		
FINISH		TITLE MARKING, TERMINAL BOARD ASSEMBLY MARKING METHOD: PER TMC SPEC S-727		
UNLESS OTHERWISE SPECIFIED DIMENSIONS ARE IN INCHES AND INCLUDE CHEMICALLY APPLIED OR PLATED FINISHES		DRAWN A. MARINO	DATE 3-24-64	FINAL APPROVAL <i>[Signature]</i>
DECIMALS .X ± .05 .XX ± .01 .XXX ± .005		CHECKED <i>[Signature]</i>	DATE 6-10-65	DATE 10/14/65
FRACTIONS ± 1/64 ANGLES ± 0° 30'		ELECT. DES. <i>[Signature]</i>	DATE	DATE
TOLERANCES		MECH. DES. <i>[Signature]</i>	DATE	DATE
LD 1429				Ø
SHEET				REV. LTR.

NOTES