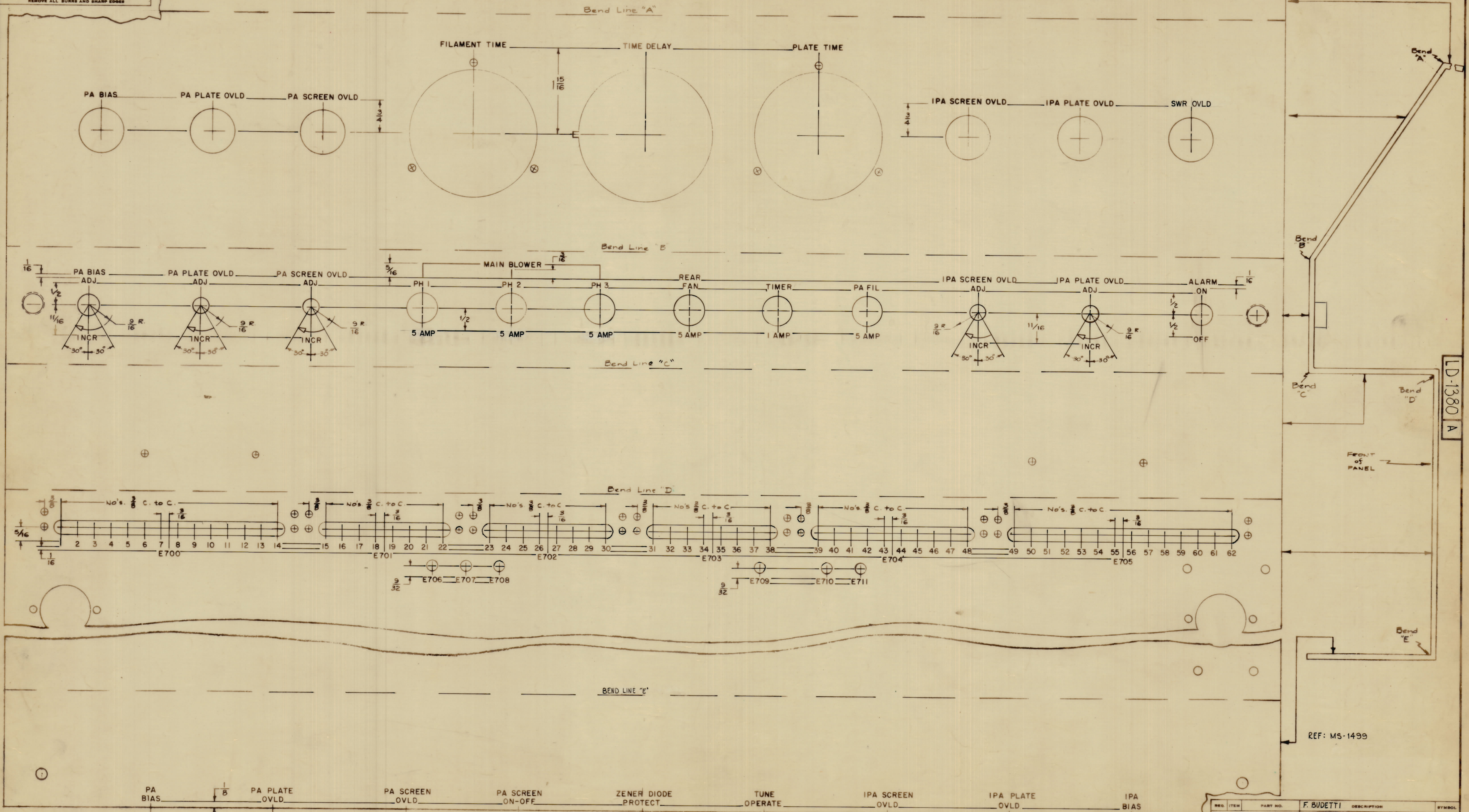


IF FOUND DESIRABLE TO CHANGE ANY TOLERANCE OR OTHER DETAIL SPECIFIED ON THIS DRAWING NOTIFY THE PURCHASER PROMPTLY.
 MAXIMUM ALLOWABLE TOLERANCES HAVE BEEN DETERMINED AND DEVIATIONS WILL BE CAUSE FOR REJECTION. REMOVE ALL BURRS AND SHARP EDGES.



LD-1380 A

REF: MS-1499

A	SEE SHEET 2	3-16-61	17970		
O	ORIGINAL RELEASE FOR PRODUCTION	5/6/64	O A.M.		
X	EXPERIMENTAL RELEASE				
ISSUE ITEM	CHANGED FROM	DATE	EN. NO.	DRAFTS	CHECKER
TOLERANCES					
SCALE: DO NOT SCALE					
ALL OTHERS	DEC. DIM. ±	DRILL PUNCH COMMERCIAL STOCK			
	FRACTIONAL DIM. ±	SIZES AND MANUFACTURERS			
	ANGULAR DIM. ±	TOLERANCES ARE NOT INCLUDED.			

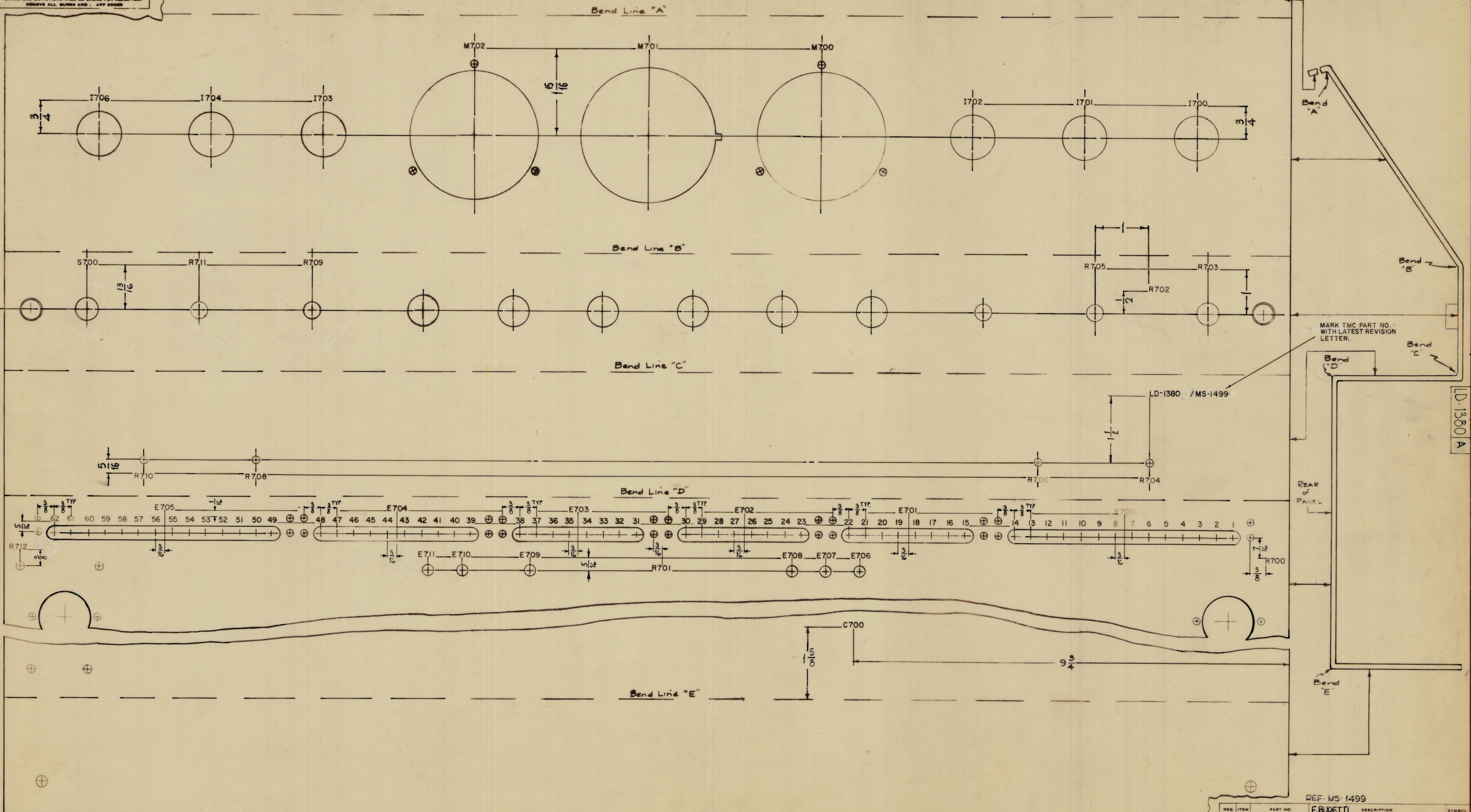
All Engraving to be white Filled.
 All Lettering to be 1/8 high Gothic.
 DEPTH of STROKE WIDTH of STROKE
 LETTERING .010 .020
 LINE WORK .010 .015
 ARROWHEADS .010 (Approx. Size Shown)

FRONT VIEW SHOWN
 Note - Panel is shown in a "Flattened" View to clearly show all lettering.

1	GPT10K(7) (AR16)			1-18-64
REQ PER UNIT	MODEL	PROJECT NO.	ASBY. NO.	DATE
USED ON				

REQ. ITEM	PART NO.	F. BUDETTI	DESCRIPTION	SYMBOL
THE TECHNICAL MATERIEL CORP.				
MAMARONECK, NEW YORK				
MARKING, FRONT PANEL				
MARKING PROCESS: ENGRAVING				
W.A. FRANCO				
BY: GRANTS ELEC. DES. APP. MECH. DES. APP.				
CHECKED: R				
HEAT TREAT. SPEC.				
SHEET 1 OF 2				
FINAL APPROVAL				
LD-1380 A				
FINISH & SPEC. NO.				

IF IT IS FOUND DESIRABLE TO CHANGE ANY TOLERANCE OR OTHER DETAIL SPECIFIED ON THIS DRAWING NOTIFY THE PURCHASER PROMPTLY.
 MAXIMUM ALLOWABLE TOLERANCES HAVE BEEN DETERMINED AND DEVIATIONS WILL BE CAUSE FOR REJECTION.
 REMOVE ALL BURRS AND 1.45R EDGES



A	13/16 WAS 1	3-16-64 17970	MB				
O	ORIGINAL RELEASE FOR PRODUCTION	5/6/64		O A.M.			
X	EXPERIMENTAL RELEASE	4/4/64					
ISSUE	ITEM	CHANGED FROM	DATE	CN NO	DRAFTS	CHECKER	ENG APP
		TOLERANCES		SCALE	DO NOT SCALE		
ALL	DEC DIM ±	FRAC DIM ±	ANGULAR DIM ±	DRILL PUNCH COMMERCIAL STOCK SIZES AND MANUFACTURERS TOLERANCES ARE NOT INCLUDED			

MARKING PROCESS: AS PER TMC SPECIFICATION S-727.
 LETTERING: 1/8 HIGH BLACK GOTHIC, LOCATED AS SHOWN.

REAR VIEW of PANEL
 Note: Panel is shown in a 'Flattened View' to clearly show all Lettering.

1	GPT-10K (J7 (ARI))	PROJECT NO.	ASBY NO.	DATE	1-27-64
REV	PER	UNIT	USED ON		

REQ. ITEM	PART NO.	DESCRIPTION	SYMBOL
	F. BUDETTI	THE TECHNICAL MATERIEL CORP. HAMARONECK, NEW YORK	
STOCK SIZE		MARKING, FRONT PANEL, REAR	
MATERIAL	WEIGHT PER FC	MARKING METHOD: AS PER TMC SPEC S-727	
TYPE & TEMPER		DRAWN: [Signature]	SEC. DES. APP. [Signature]
HEAT TREAT SPEC.		CHECKED: [Signature]	FINAL APPROVAL: [Signature]
FINISH & SPEC. NO.		SHEET 2 OF 2	LD-1380 A

LD-1380 A

REF: MS-1499

REAR OF PANEL