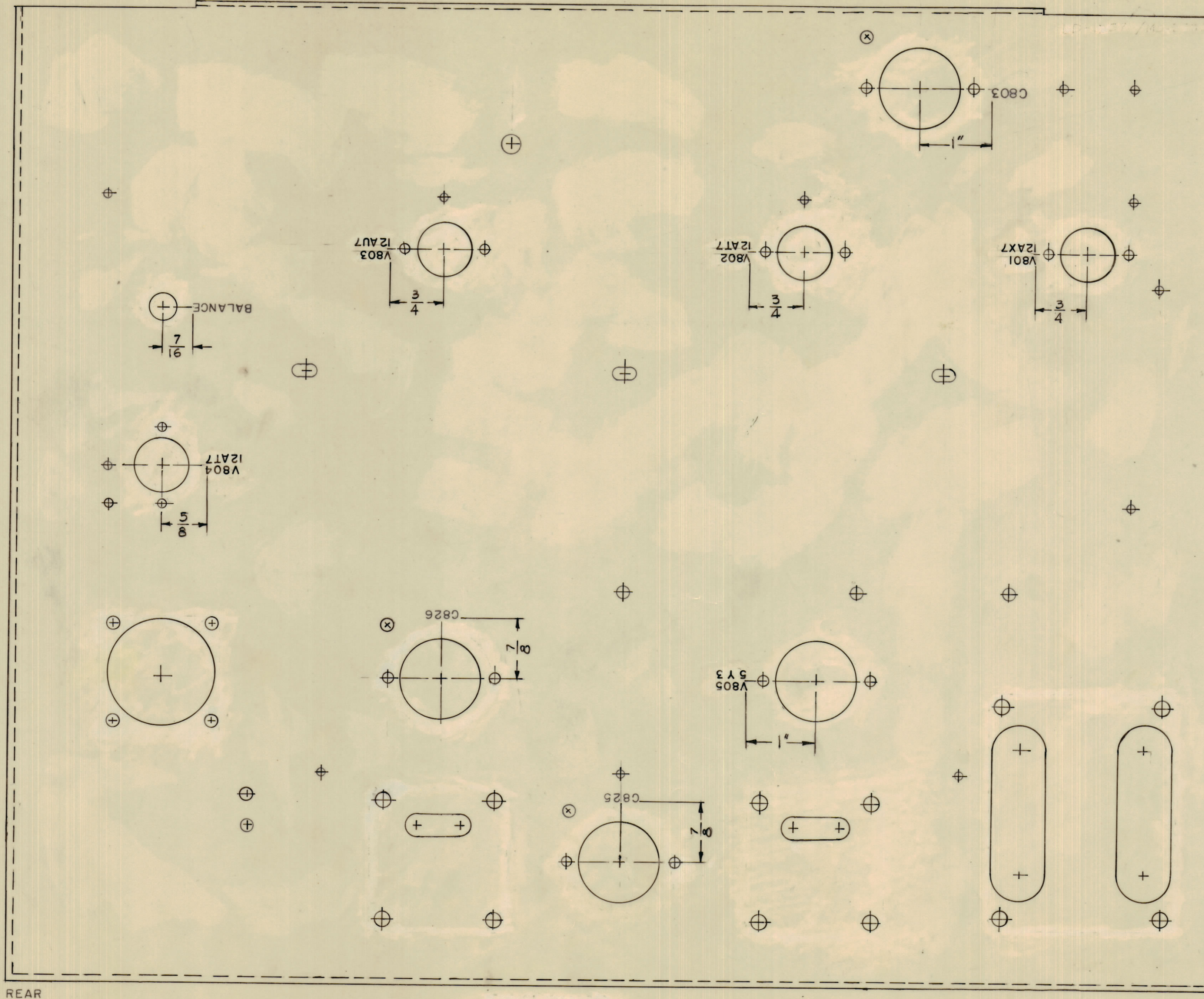


IF IT IS FOUND DESIRABLE TO CHANGE ANY TOLERANCE OR OTHER DETAIL SPECIFIED ON THIS DRAWING NOTIFY THE PURCHASER PROMPTLY.
 MAXIMUM ALLOWABLE TOLERANCES HAVE BEEN DETERMINED AND DEVIATIONS WILL BE CAUSE FOR REJECTION.
 REMOVE ALL BURRS AND SHARP EDGES

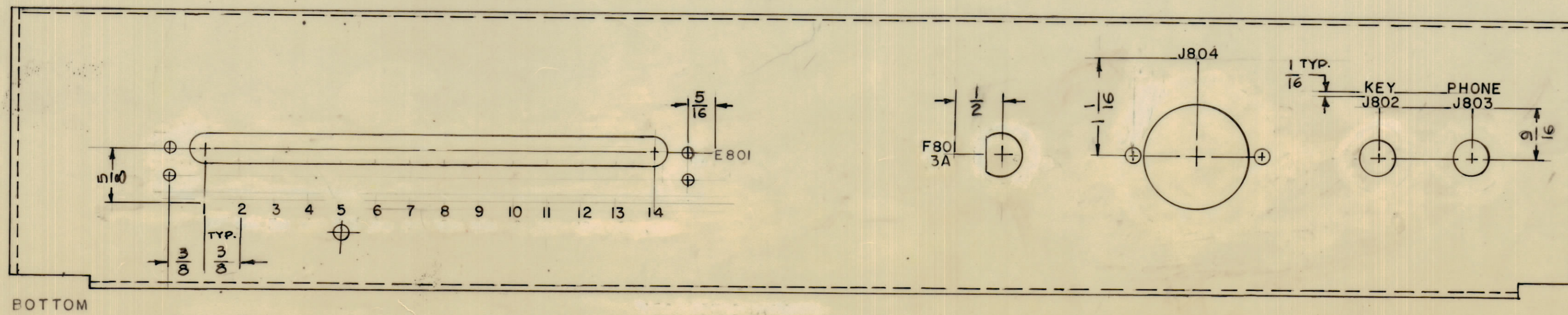
NOTICE TO PERSONS RECEIVING THIS DRAWING
 THE TECHNICAL MATERIEL CORPORATION claims proprietary right in the material disclosed hereon. This drawing is issued in confidence for engineering information only and may not be reproduced or used to manufacture anything shown hereon without permission from THE TECHNICAL MATERIEL CORPORATION to the user. This drawing is loaned for mutual assistance and is subject to recall at any time.
 Property of:
 THE TECHNICAL MATERIEL CORPORATION
 MAMARONECK, NEW YORK

FRONT CHASSIS



REAR

NOTE
 UNLESS OTHERWISE SPECIFIED
 1) MARKING PROCESS: AS PER TMC SPEC. S-727
 2) LETTERING: 1/8 HIGH BLACK, GOTHIC LOCATED AS SHOWN
 3) SPACING WILL BE 1/16 BETWEEN LETTER GROUPS



BOTTOM

REF ~ MS - 3492

REQ. ITEM	PART NO.	DESCRIPTION	SYMBOL
THE TECHNICAL MATERIEL CORP. MAMARONECK, NEW YORK			
MARKING, CHASSIS (EXTERIOR VIEWS)			
MARKING METHOD: AS PER TMC S-727			
DRAWN		ELE. DES. APP.	MECH. DES. APP.
CHECKED		FINAL APPROVAL	
SHEET 1 OF 2			
LD-1357			

ISSUE	ITEM	CHANGED FROM	DATE	EN. NO.	DRAFTS	CHECKER	ENG. APP.
TOLERANCES							
SCALE: 1:1							
DRILL PUNCH, COMMERCIAL STOCK SIZES AND MANUFACTURERS TOLERANCES ARE NOT INCLUDED.							

1	RTC-2	PROJECT NO.	ASSY. NO.	9-16-63
REQ PER UNIT	MODEL	PROJECT NO.	ASSY. NO.	DATE
USED ON				

LD-1357