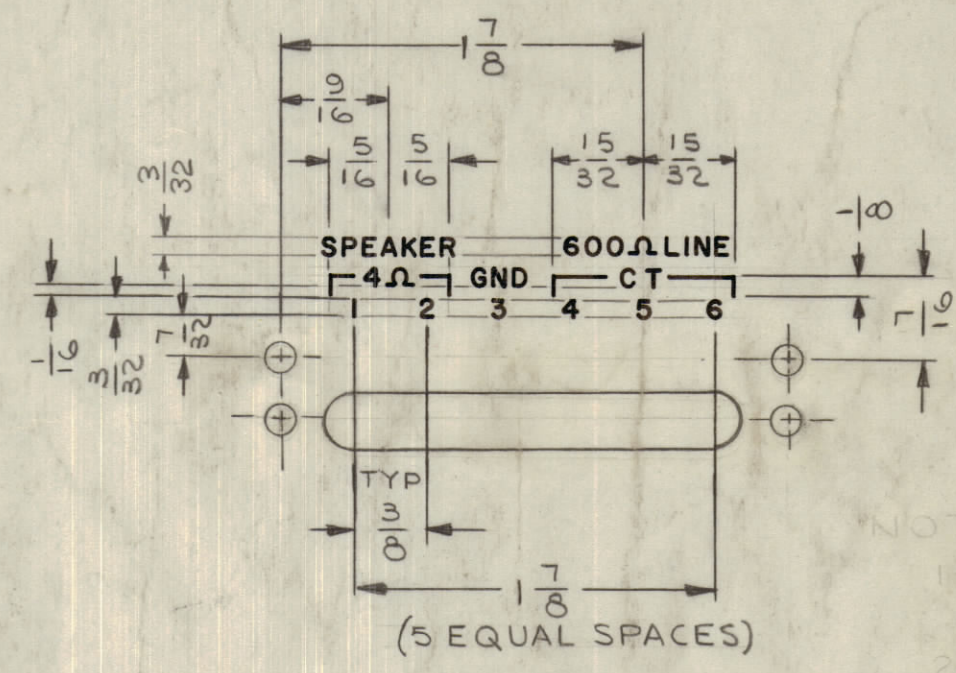
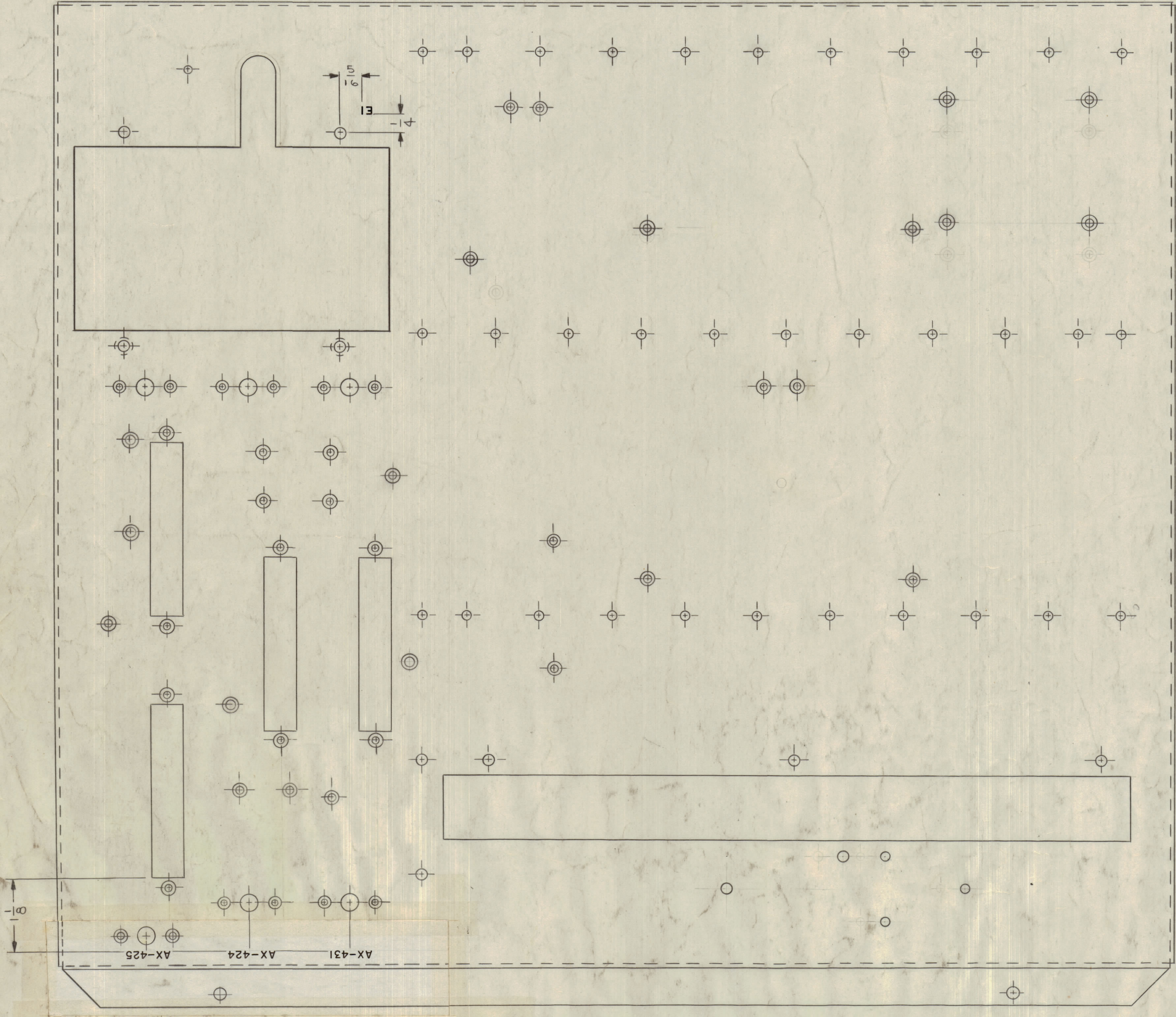


REVISIONS						
ZONE	SYM	DESCRIPTION	DATE	E.M.N. NO.	DRAFT	CHKD
#	X1	SEE MS-3404 FOR REVISION "X1"	9/20/63	1	GS	
#	X2	SEE MS-3404 FOR REVISION "X2"	11/13/63	2	GS	
#	X3	REVISED ALL "J" NOS., WERE FROM J301 THRU J305.	11/20/63	3	JL	
B10	X4	LETTERING AX-431 WAS AF A3201; AX-424 WAS BFO A3168; AX-425 WAS IF A3181	12/17/63	4	GS	
A9	X5	FUSE DESCRIPTIONS ADDED ON REAR APRON SYMBOLS F301, 302, 303 RELOCATED	2/14/64	5	GS	
#	0	ORIGINAL RELEASE FOR PRODUCTION	5/12/64	0	A.M.	



NOTES:
 1. ALL LETTERING TO BE 1/8 HIGH BLACK GOTHIC .020 STROKE.
 2. MARKING PROCESS AS PER TMC SPEC S-727.
 3. LOCATE APPROX. AS SHOWN.
 - UNLESS OTHERWISE SPECIFIED -

MARKING PROCESS: AS PER TMC SPECIFICATION S-727.
 LETTERING: 1/8 HIGH BLACK GOTHIC, LOCATED AS SHOWN.
 ALL LETTER GROUPS TO BE CENTERED ON HOLES.

