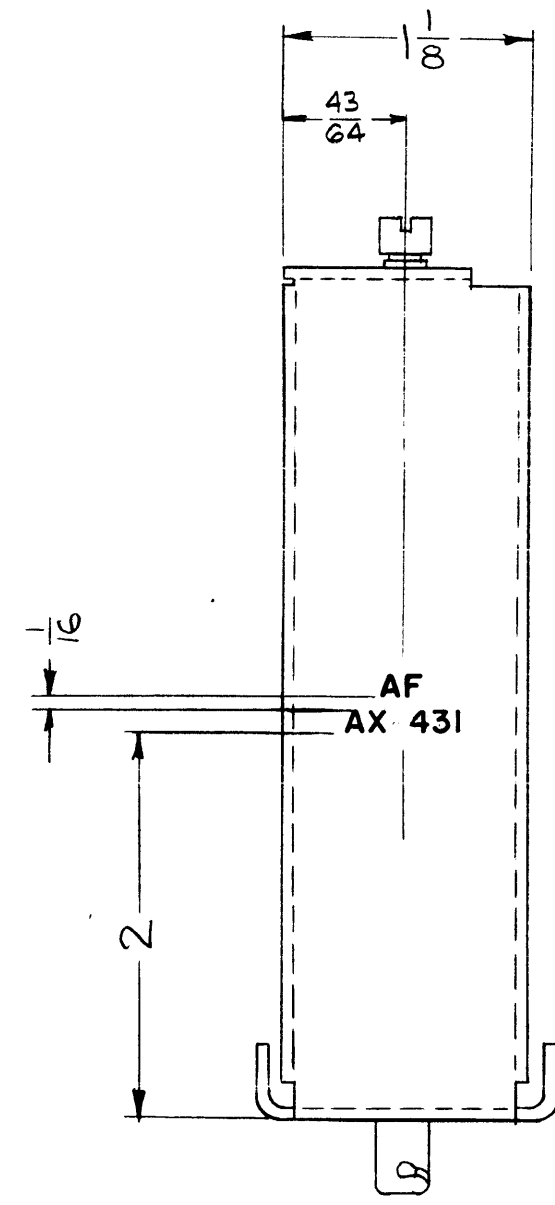


LD-13520

| REVISIONS | | | | | |
|-----------|--------------------------------------|----------|------------|--------------------|--------------------|
| SYM | DESCRIPTION | DATE | E.M.N. NO. | DRAFT | CHKD APPD |
| X1 | DIM. 1-1/8 ADDED TO SIDE VIEW (LEFT) | 9-24-63 | 1 | G.S. | <i>[Signature]</i> |
| X2 | LETTERING AX-431 WAS A3201 | 12/17/63 | 2 | <i>[Signature]</i> | <i>[Signature]</i> |
| 0 | ORIGINAL RELEASE FOR PRODUCTION | 5-11-64 | 0 | A.M. | <i>[Signature]</i> |



MARK TMC PART NO. WITH LATEST REVISION LETTER.

- UNLESS OTHERWISE SPECIFIED

MARKING PROCESS: AS PER TMC SPECIFICATION S-727.
 LETTERING: 1/8 HIGH BLACK GOTHIC, LOCATED AS SHOWN.

REF: MS 3429

| REQ'D. | ITEM | PART NUMBER | DESCRIPTION | SYMBOL |
|---|------|---|----------------|--------------------------------------|
| M. GELLMAN LIST OF MATERIAL | | | | |
| MATERIAL | | THE TECHNICAL MATERIEL CORP. MAMARONECK, NEW YORK | | |
| FINISH | | TITLE MARKING, FRAME, MTG - AF MODULE MARKING METHOD - AS PER S-727 | | |
| UNLESS OTHERWISE SPECIFIED DIMENSIONS ARE IN INCHES AND INCLUDE CHEMICALLY APPLIED OR PLATED FINISHES | | DRAWN <i>[Signature]</i> | DATE 8-8-63 | FINAL APPROVAL <i>[Signature]</i> |
| | | CHECKED <i>[Signature]</i> | DATE 5-7-64 | |
| | | ELECT. DES. <i>[Signature]</i> | DATE | LD 1352 0 |
| | | MECH. DES. <i>[Signature]</i> | DATE 5-7-64 | SHEET |
| | | | | REV. LTR. |

| | | |
|--------------|---------------|------------|
| 1 | VLR-1 | AX-431 |
| QTY./UNIT | MODEL USED ON | ASS'Y. NO. |
| SCALE 1:1 | CODE A | |

THE CONTENTS OF THIS DRAWING ARE THE EXCLUSIVE PROPERTY OF THE TECHNICAL MATERIEL CORP. ITS UNAUTHORIZED USE OR REPRODUCTION IN WHOLE OR IN PART IS STRICTLY FORBIDDEN.

DECIMALS
.X ± .05
.XX ± .01
.XXX ± .005

TOLERANCES

FRACTIONS
± 1/64
ANGLES
± 0° 30'

NOTES