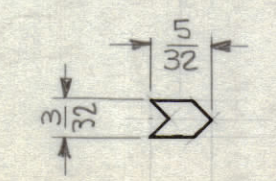
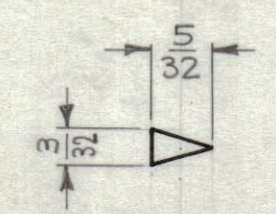
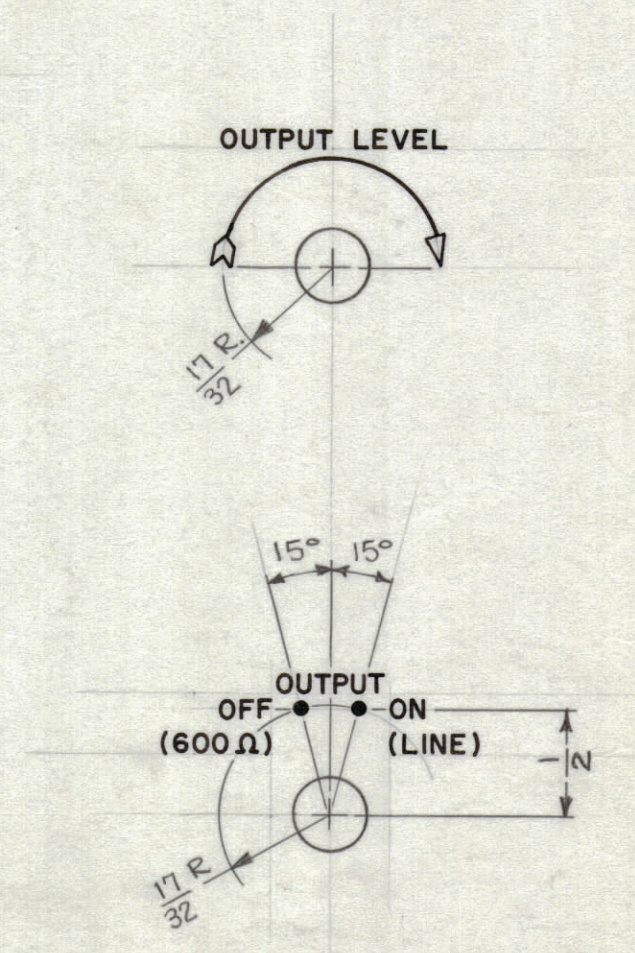
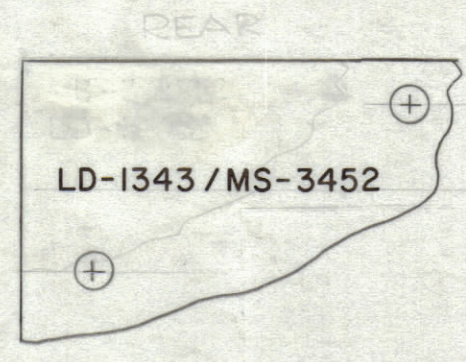
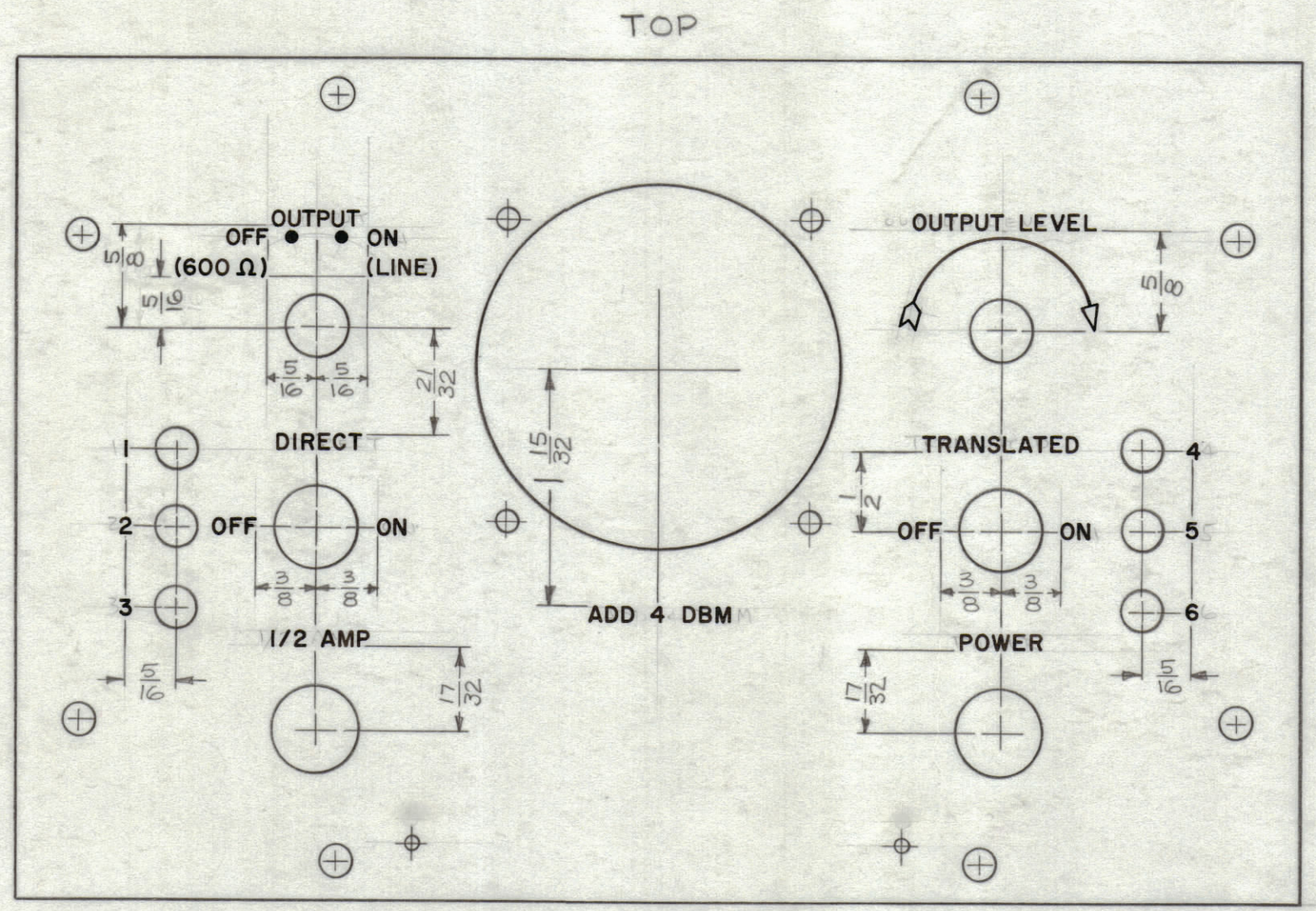


REVISIONS						
ZONE	SYM	DESCRIPTION	DATE	E.M.N. NO.	DRAFT	CHKD APPD



LETTER HEIGHT	DEPTH OF STROKE	WIDTH OF STROKE
3/32	.010	.015
DOTS	.010	1/16 DIA.
LINES	.010	.015
ARROWHEADS	.010	.015
TAILS	.010	.015

- ~UNLESS OTHERWISE SPECIFIED~
- 1- ALL ENGRAVING TO BE 3/32 HIGH, GOTHIC WHITE FILLED (SEE CHART).
  - 2- ALL ARROWHEADS 3/32 x 5/32, WHITE OUTLINED FILLED (SEE DETAIL).
  - 3- ALL LINES AND DOTS TO BE WHITE FILLED.
  - 4- ALL LETTER GROUPS TO BE CENTERED ON HOLES.
  - 5- ALL TAILS TO BE 3/32 x 5/32, WHITE OUTLINE FILLED. (SEE DETAIL).

NOTES

1	TMX-TMXI	
Q'TY./UNIT	MODEL USED ON	ASS'Y. NO.
SCALE 1:1 & AS NOTED	CODE	
THE CONTENTS OF THIS DRAWING ARE THE EXCLUSIVE PROPERTY OF THE TECHNICAL MATERIEL CORP. ITS UNAUTHORIZED USE OR REPRODUCTION IN WHOLE OR IN PART IS STRICTLY FORBIDDEN.		

REF: MS-3452

REQ'D.	ITEM	PART NUMBER	DESCRIPTION	SYMBOL
I. JOHNSON LIST OF MATERIAL				
MATERIAL		THE TECHNICAL MATERIEL CORP. MAMARONECK, NEW YORK		
FINISH		TITLE FRONT PANEL, ENGRAVING, MULTIPLEXER		
UNLESS OTHERWISE SPECIFIED DIMENSIONS ARE IN INCHES AND INCLUDE CHEMICALLY APPLIED OR PLATED FINISHES		DRAWN E. Jensen	DATE 7-15-63	FINAL APPROVAL BP
DECIMALS X ± .05 .XX ± .01 .XXX ± .005		CHECKED W. Jensen	DATE 7-26-63	DATE 7-27-63
FRACTIONS ± 1/64 ANGLES ± 0° 30'		ELECT. DES. W. Jensen	DATE 7-27-63	DATE 7-27-63
TOLERANCES		MECH. DES. W. Jensen	DATE 7-27-63	DATE 7-27-63
			LD-1343	
			SHEET	REV. LTR.

LD-1343