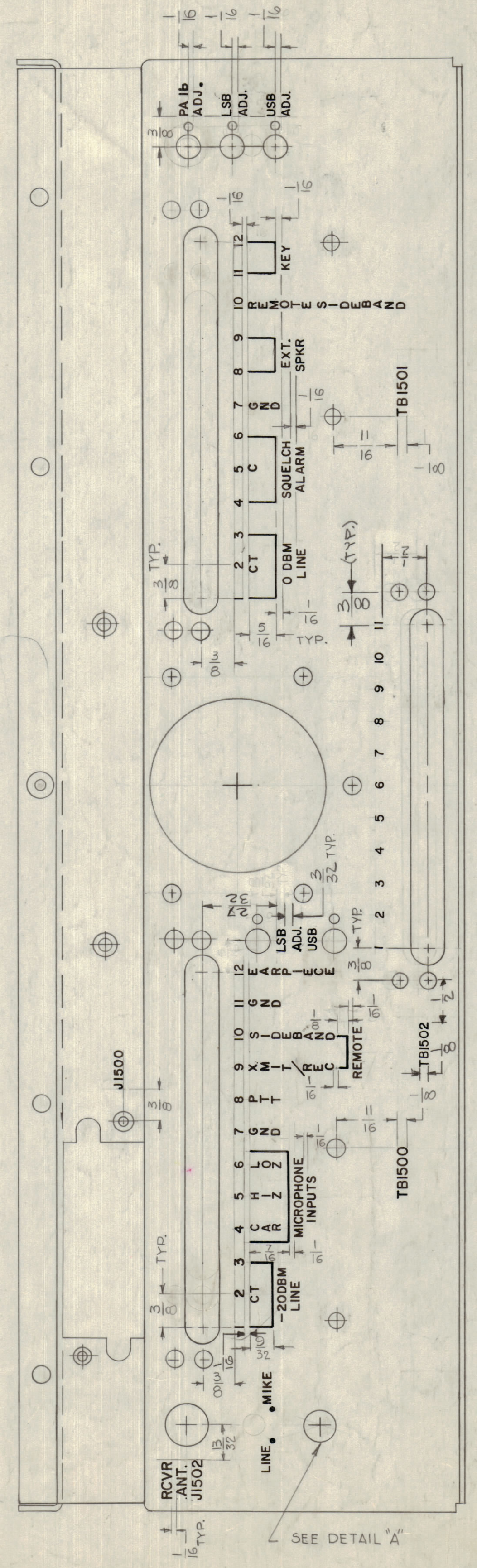
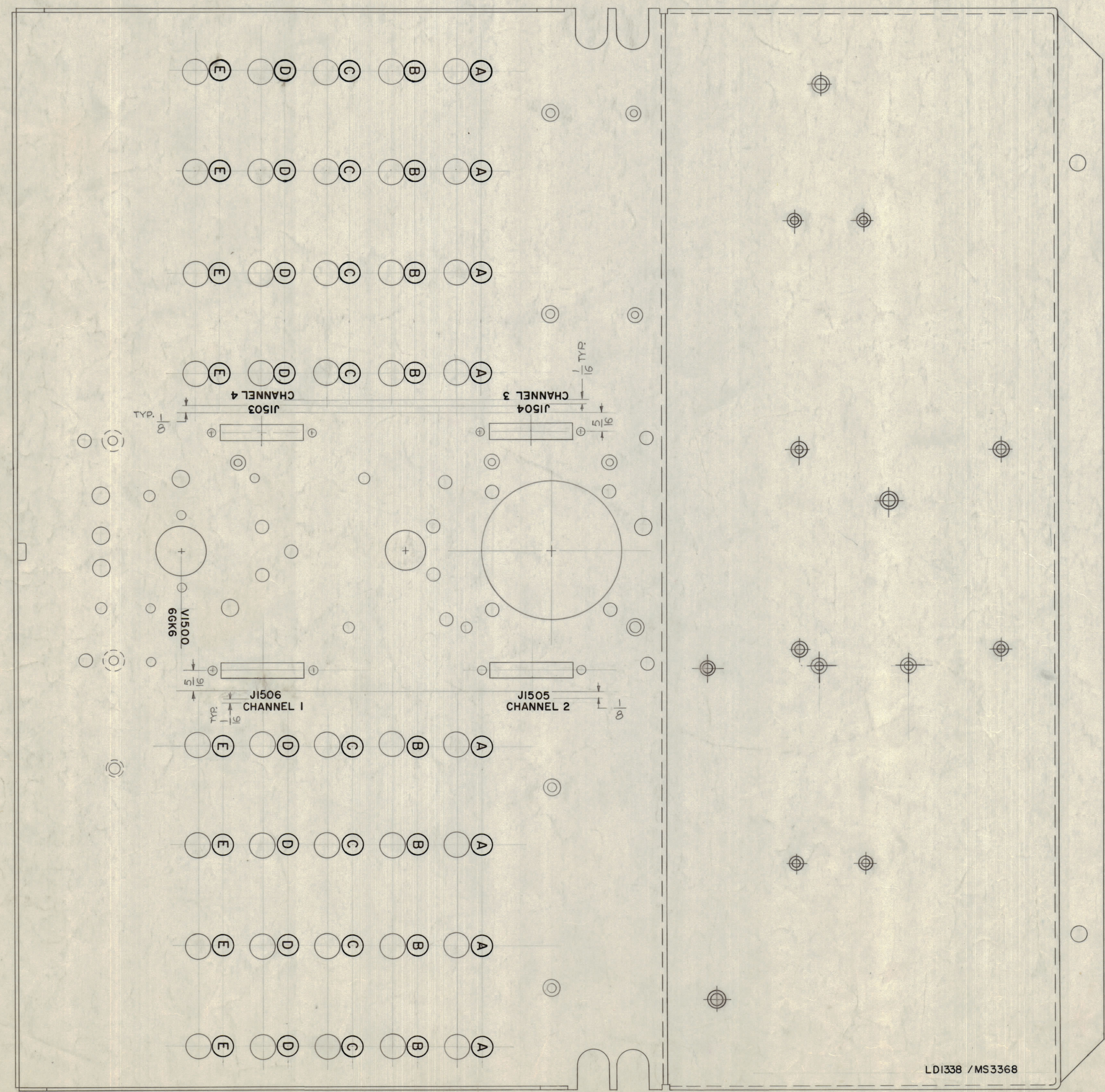
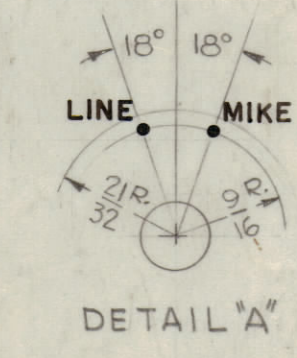


REVISIONS						
ZONE	SYM	DESCRIPTION	DATE	E.M.N. NO.	DRAFT	CHKD
4G	A	LSB ADJ & USB ADJ. PLUS HOLES ADDED	7-21-64	1195B	SEC	JK
D4	B	ON REAR VIEW, CENTER CLUSTERS ADDED.	10-29-64	1278B	JK	JK
C7	C	2 HOLES ADD. TO CONFORM WITH MS336 B REV. F"	2-4-65	1327B	JK	JK
	D	TB1502 LETTERING, LSB, NOT, ASB ADDED	8-4-64	14609	JK	JK



REAR VIEW

- UNLESS OTHERWISE SPECIFIED
1. ALL LETTERING TO BE 3/32 HIGH BLACK GOTHIC MARKING PROCESS: AS PER TMC SPEC 5727.
 2. LETTERING TO BE CENTERED ABOUT CENTER LINES OF HOLES. LOCATE APPROX. AS SHOWN
 3. CIRCLES TO BE 5/16 DIA. BLACK.
 4. ALL LETTERING ON CIRCLES TO BE 3/16 HIGH BLACK GOTHIC
 5. ALL LINES TO BE BLACK WIDTH OF STROKE .015



LD1338 / MS3368

REF: MS-3368

REQ'D.	ITEM	PART NUMBER	DESCRIPTION	SYMBOL
JORDAN LIST OF MATERIAL E3087-2				
MATERIAL		THE TECHNICAL MATERIEL CORP. MAMARONECK, NEW YORK		
FINISH		TITLE MARKING, MAIN CHASSIS (TOP)		
QTY./UNIT	SCALE	MODEL USED ON	ASS'Y. NO.	
	1:1	A		
UNLESS OTHERWISE SPECIFIED DIMENSIONS ARE IN INCHES AND INCLUDE CHEMICALLY APPLIED OR PLATED FINISHES		DRAWN	DATE	FINAL APPROVAL
		JK	6-14-63	JK
		CHECKED	DATE	
		JK	5-6-63	
		LECT. DES.	DATE	
		RKOHN	11-6-64	
		MECH. DES.	DATE	
		RKOHN	11-6-64	
DECIMALS XX ± .05 XXX ± .01 XXX ± .005			FRACTIONS ± 1/64 ± 1/32 ± 0° 30'	LD-1338 D
TOLERANCES			DATE	SHEET 1 OF 2
			11-6-64	REV. LTR.

NOTES

TOP VIEW

LD-1338

D

C

B

A