

THE CONTENTS OF THIS DRAWING ARE THE EXCLUSIVE PROPERTY OF THE TECHNICAL MATERIEL CORP. ITS UNAUTHORIZED USE FOR REPRODUCTION IN WHOLE OR IN PART IS STRICTLY FORBIDDEN.

REQ. PER UNIT

1

USED ON

MODEL

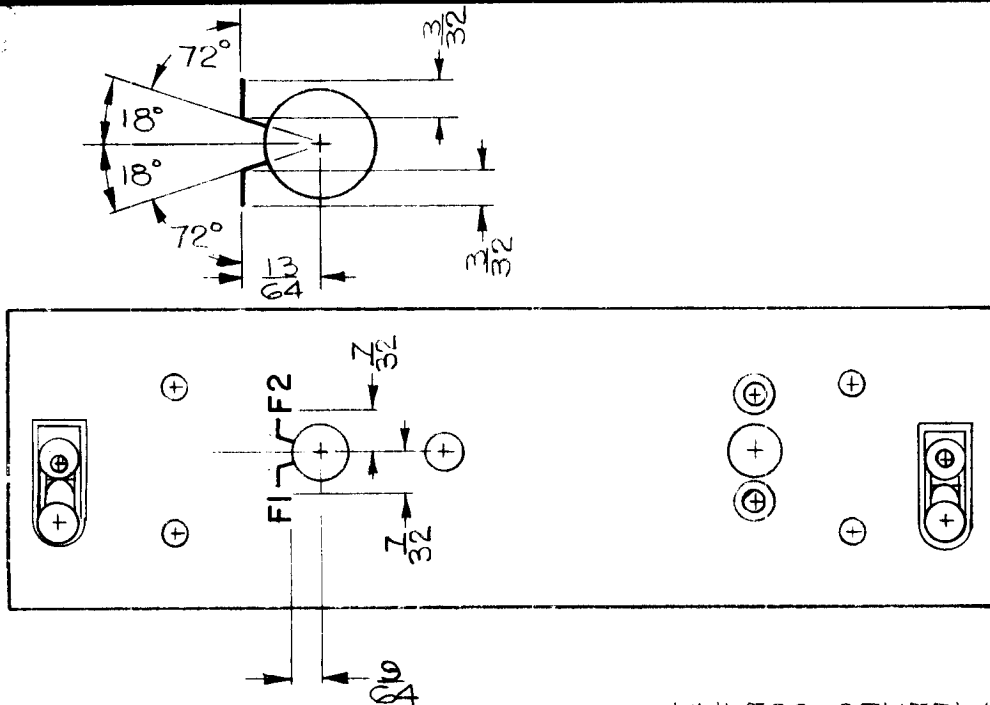
TTRT

ASS'Y. NO.

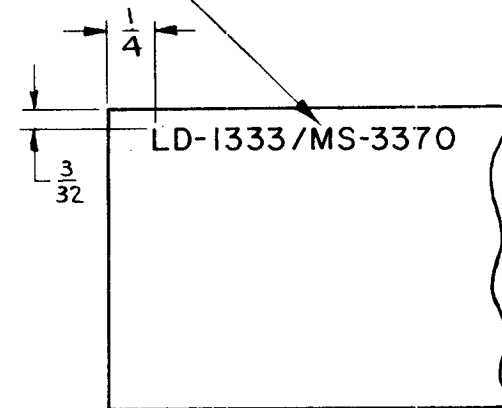
DATE

6-11-63

LD-1333



MARKING PROCESS: AS PER TMC SPEC. S-727 ON REAR OF PANEL



UNLESS OTHERWISE SPECIFIED:  
 ALL LETTERING TO BE 1/8 HIGH GOTHIC.  
 ALL LINES & LETTERING TO BE WHITE FILLED.  
 DEPTH OF LINES -.010, WIDTH OF LINES -.015  
 LOCATE APPROX. AS SHOWN.  
 MARKING METHOD: ENGRAVING

REF: MS-3370

SYM	DESCRIPTION	DATE	CH. NO.	DRAFTS	CHECKER	ENG. APP.	REQ. ITEM	PART NO.	KOHN	DESCRIPTION	SYMBOL
										THE TECHNICAL MATERIEL CORP. MAMARONECK. NEW YORK	
										MARKING, FRONT PANEL	
										MARKING METHOD: ENGRAVING	
	UNLESS OTHERWISE SPECIFIED DIMENSIONS ARE IN INCHES AND INCLUDE CHEMICALLY APPLIED OR PLATED FINISHES	SCALE	1:1						<i>R. Kohn</i> 6-11-63	<i>J. H. 4/1/63</i>	<i>R. Kohn</i>
							TYPE & TEMPER	HEAT TREAT. SPEC.	DRAWN	CHECKED	FINAL APPROVAL
DECIMALS .X ± .05 .XX ± .01 .XXX ± .005	TOLERANCES	FRACTIONS ± 1/64 ANGLES ± 0° 30'	CODE A						RON KOHN 17 JULY 1963		LD-1333
							FINISH & SPEC. NO.		ELEC. DES. APP.	MECH. DES. APP.	