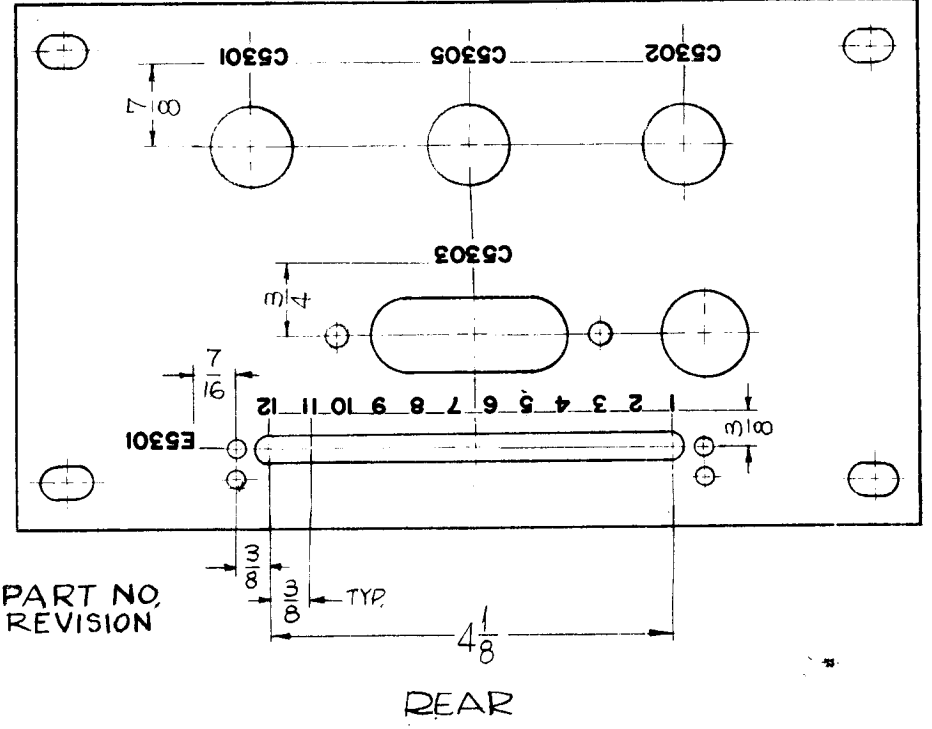
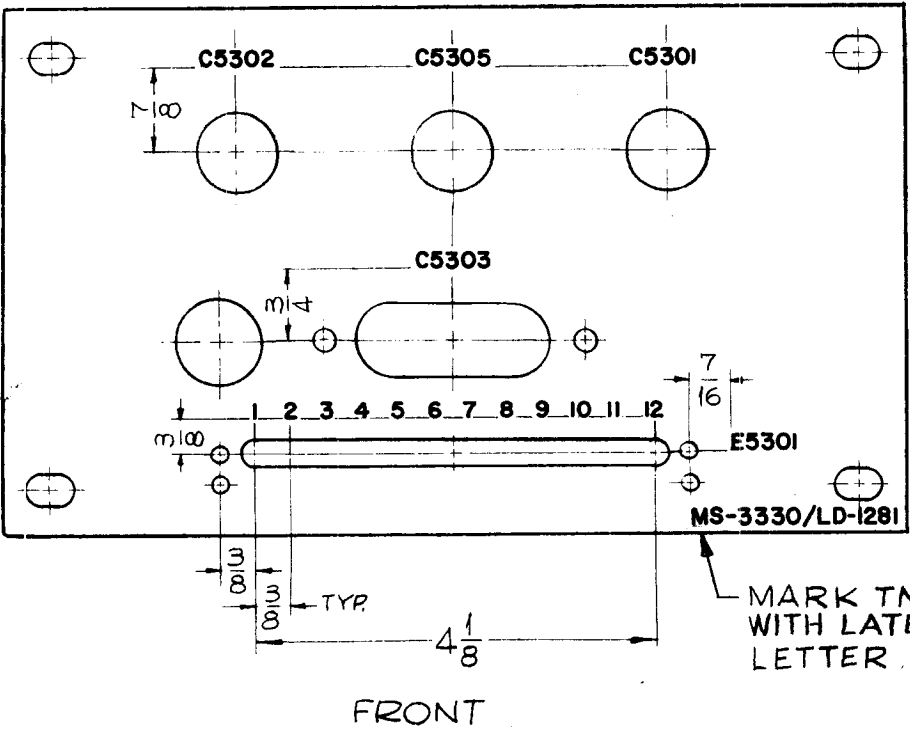


MARKING PROCESS: AS PER TMC SPECIFICATION S-727.

LETTERING: 1/8 HIGH BLACK GOTHIC, LOCATED AS SHOWN.

REQ. PER UNIT	USED ON			LD-1281   A
	MODEL	ASS'Y. NO.	DATE	
1	GPT-200K	AX-395	8-23-63	



REF: MS-3330

						REQ. ITEM	PART NO.	F. BUDETTI	DESCRIPTION	SYMBOL	
A	CLERICAL CHANGE	9.3.64	+	WB	7/16			THE TECHNICAL MATERIEL CORP. MAMARONECK, NEW YORK			
O	ORIGINAL RELEASE FOR PRODUCTION	5-27-64	O	A.M.				MARKING, PLATE CAP. MTG. MARKING PROCESS: AS PER TMC SPEC. S-727			
SYM	DESCRIPTION	DATE	CH. NO.	DRAFTS	CHECKER	ENG. APP.	MATERIAL	SRG	AA	RAC	
UNLESS OTHERWISE SPECIFIED DIMENSIONS ARE IN INCHES AND INCLUDE CHEMICALLY APPLIED OR PLATED FINISHES		SCALE		1/2			TYPE & TEMPER	HEAT TREAT. SPEC.	DRAWN	CHECKED	FINAL APPROVAL
DECIMALS .X ± .05 .XX ± .01 .XXX ± .005	TOLERANCES	FRACTIONS ± 1/64 ANGLES ± 0° 30'	CODE	A			FINISH & SPEC. NO.	ELEC. DES. APP.	MECH. DES. APP.	LD-1281	A