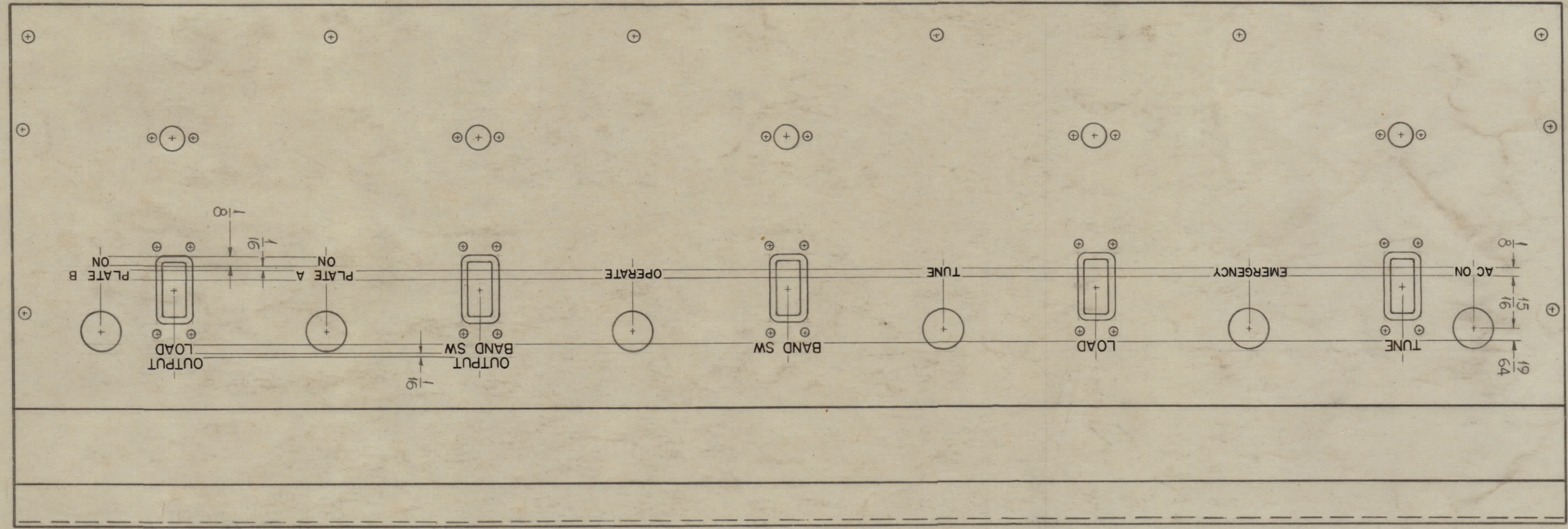


ZONE	SYM	DESCRIPTION	DATE	E.M.N. NO.	DRAFT	CHKD	APPD
0		ORIGINAL RELEASE FOR PRODUCTION	5-18-64				

LD-1204 / 0



FRONT VIEW SHOWN

REF: MS-3193

REQD. ITEM	PART NUMBER	DESCRIPTION	SYMBOL

F. BUDETTI

LIST OF MATERIAL

MATERIAL

THE TECHNICAL MATERIEL CORP.
MAMARONECK, NEW YORK

ENGRAVING PANEL FRONT, PA TUNING

DATE	DRAWN	CHECKED	DATE	FINAL APPROVAL	DATE

DATE	ELECT. DES.	MECH. DES.	SHEET	REV. LTR.

QTY./UNIT	MODEL USED ON	ASSY. NO.
1	GPT-200K	AX-395

SCALE 3/8" = 1"

HEIGHT OF LETTER	HEIGHT OF DEPTH OF STROKE	WIDTH OF STROKE
3/16	.010	.026
1/8	.010	.020

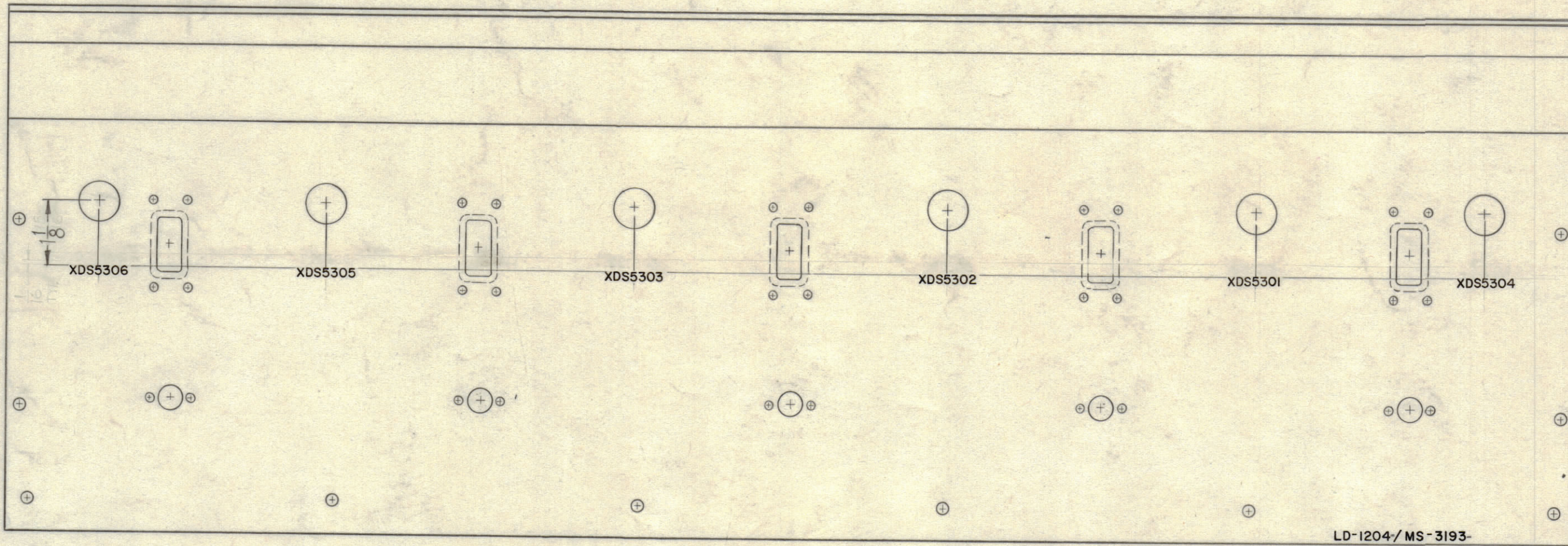
UNLESS OTHERWISE SPECIFIED:
 1~ ALL ENGRAVING TO BE 3/16
 HIGH GOTHIC WHITE FILLED.
 2~ ALL LETTER GROUPS TO BE CENTERED
 ON HOLES OR CUTOUTS.

NOTES

THE CONTENTS OF THIS DRAWING ARE THE EXCLUSIVE PROPERTY
 OF THE TECHNICAL MATERIEL CORP. ITS UNAUTHORIZED USE OR
 REPRODUCTION IN WHOLE OR IN PART IS STRICTLY FORBIDDEN.

UNLESS OTHERWISE SPECIFIED
 DIMENSIONS ARE IN INCHES AND INCLUDE
 CHEMICALLY APPLIED OR PLATED FINISHES
 FRACTIONS
 DECIMALS
 X ± .05
 XX ± .01
 XXX ± .005
 ANGLES
 ± 1/64
 TOLERANCES
 ± .001

REVISIONS							
ZONE	SYM	DESCRIPTION	DATE	E.M.N. NO.	DRAFT	CHKD	APPD
0		ORIGINAL RELEASE FOR PRODUCTION	5-18-64		SRL		



REAR VIEW SHOWN

MARK TMC PART NO. W/LATEST REV. LETTER.

MARKING PROCESS: AS PER TMC SPECIFICATION S-727.
 LETTERING: 1/8 HIGH BLACK GOTHIC, LOCATED AS SHOWN.

REQ'D.	ITEM	PART NUMBER	DESCRIPTION	SYMBOL
F. BUDETTI				
LIST OF MATERIAL				
MATERIAL			THE TECHNICAL MATERIEL CORP. MAMARONECK, NEW YORK	
FINISH			TITLE LETTERING, REAR, FRONT PANEL, PA TUNING	
UNLESS OTHERWISE SPECIFIED DIMENSIONS ARE IN INCHES AND INCLUDE CHEMICALLY APPLIED OR PLATED FINISHES		DRAWN SRS	DATE 8-6-63	FINAL APPROVAL KIC
DECIMALS .X ± .05 .XX ± .01 .XXX ± .005		CHECKED AA	DATE	DATE
FRACTIONS ± 1/64 ANGLES ± 0° 30'		ELECT. DES. DOB	DATE 3/18/64	DATE
TOLERANCES		MECH. DES. JVE	DATE 3/18/64	DATE
SHEET 2 OF 2				REV. LTR. 0

Q'TY./UNIT	MODEL USED ON	ASS'Y. NO.
1	GPT-200K	AX-395
SCALE	CODE	

NOTES

THE CONTENTS OF THIS DRAWING ARE THE EXCLUSIVE PROPERTY OF THE TECHNICAL MATERIEL CORP. ITS UNAUTHORIZED USE OR REPRODUCTION IN WHOLE OR IN PART IS STRICTLY FORBIDDEN.

LD-1204
0