

THE CONTENTS OF THIS DRAWING ARE THE EXCLUSIVE PROPERTY OF THE TECHNICAL MATERIEL CORP. ITS UNAUTHORIZED USE OR REPRODUCTION IN WHOLE OR IN PART IS STRICTLY FORBIDDEN.

REQ.
PER
UNIT

1

USED ON

MODEL

HFS-1

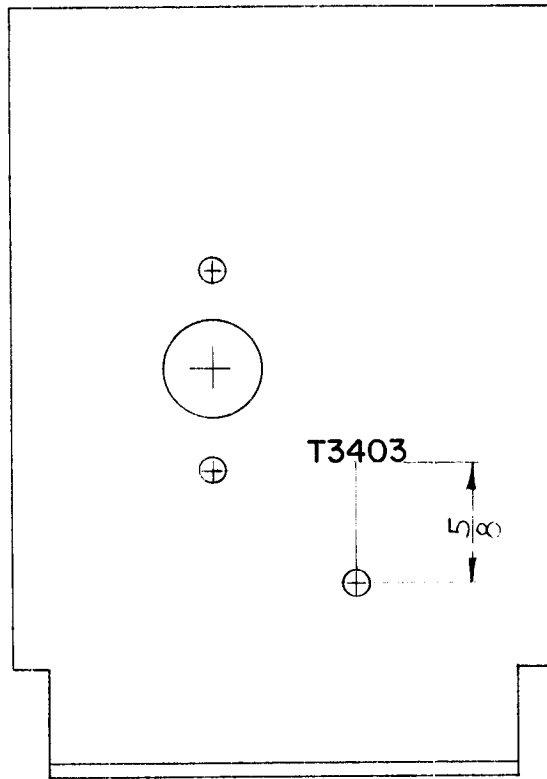
ASS'Y. NO.

AX-387

DATE

8-17-62

LD-1100



REAR VIEW

~ UNLESS OTHERWISE SPECIFIED -
1/8 HIGH BLACK LUSTERLESS, GOTHIC
LETTERING.

MARKING PROCESS: AS PER TMC SPECIFICATION S-727

REF: MS-2880 (2).

REQ.	ITEM	PART NO.	J. STRIMER		DESCRIPTION	SYMBOL			
					THE TECHNICAL MATERIEL CORP. MAMARONECK, NEW YORK LETTERING, SHIELD MTG. SWITCH (3400 DECK)				
			STOCK SIZE						
			MATERIAL						
SYM	DESCRIPTION	DATE	CH. NO.	DRAFTS	CHECKER	ENG. APP.			
UNLESS OTHERWISE SPECIFIED: DIMENSIONS ARE IN INCHES TOLERANCES ON FRAC. ± 1/64 DEC. ± .005 ANGLES ± 1/2°		SCALE: MAXIMUM ALLOWABLE TOLERANCES HAVE BEEN DETERMINED AND ANY DEVIATIONS WILL BE CAUSE FOR REJECTION. REMOVE ALL BURRS AND SHARP EDGES							
				TYPE & TEMPER HEATTREAT. SPEC.		DRAWN <i>JMA</i>	CHECKED <i>JMA</i>	FINAL APPROVAL <i>BP</i>	LD-1100
				FINISH & SPEC. NO.		EMEC. DES. APP.	MECH. DES. APP.		

THE CONTENTS OF THIS DRAWING ARE THE EXCLUSIVE PROPERTY OF THE TECHNICAL MATERIEL CORP. ITS UNAUTHORIZED USE OR REPRODUCTION IN WHOLE OR IN PART IS STRICTLY FORBIDDEN.

REQ. PER UNIT 1	USED ON		LD-1107	A
	MODEL HFS-1	ASS'Y. NO. 3500		

~ UNLESS OTHERWISE SPECIFIED ~

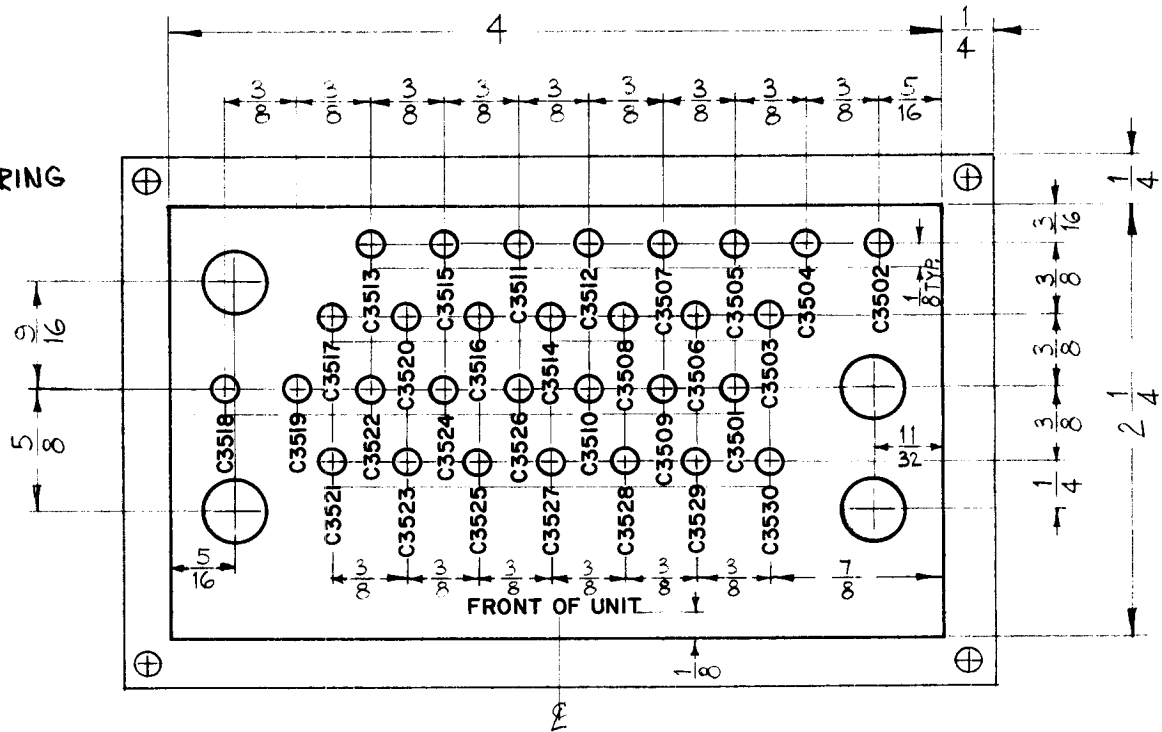
1/16 HIGH BLACK LUSTERLESS, GOTHIC LETTERING
MARKING PROCESS: AS PER TMC SPECIFICATION S-727.

ALL LETTERING TO BE CENTERED ON CIRCLE LETTERING.

ALL LINES TO BE SAME WIDTH AS LETTERING

○ SMALL CIRCLE SHALL BE 1/8 DIA.
(30 REQ)

○ LARGE CIRCLE SHALL BE 5/16 DIA.
(4 REQ)



REF: MS-2995 (1).

SYM	DESCRIPTION	DATE	CH. NO.	DRAFTS	CHECKER	ENG. APP.	REQ.	ITEM	PART NO.	J. STRUMER	DESCRIPTION	SYMBOL
A	ADDED CIRCLE NOTES LETTERING WAS CENTERED ON HOLES	3-18-63	8545	RC	<i>[Signature]</i>	<i>[Signature]</i>					THE TECHNICAL MATERIEL CORP. MAMARONECK, NEW YORK	
											LETTERING, PLATE, CAPACITOR DESIGNATION (3500 DECK)	
	UNLESS OTHERWISE SPECIFIED: DIMENSIONS ARE IN INCHES TOLERANCES ON FRAC. ± 1/64 DEC. ± .005 ANGLES ± 1/2°										W.A.F. <i>[Signature]</i> <i>[Signature]</i>	
		SCALE:									BP	
		MAXIMUM ALLOWABLE TOLERANCES HAVE BEEN DETERMINED AND ANY DEVIATIONS WILL BE CAUSE FOR REJECTION. REMOVE ALL BURRS AND SHARP ED ES									DRAWN <i>[Signature]</i> CHECKED <i>[Signature]</i>	LD-1107
											MECH. DES. APP. <i>[Signature]</i>	A

THE CONTENTS OF THIS DRAWING ARE THE EXCLUSIVE PROPERTY OF THE TECHNICAL MATERIEL CORP. ITS UNAUTHORIZED USE OR REPRODUCTION IN WHOLE OR IN PART IS STRICTLY FORBIDDEN.

REQ. PER UNIT

MODEL

USED ON

ASS'Y. NO.

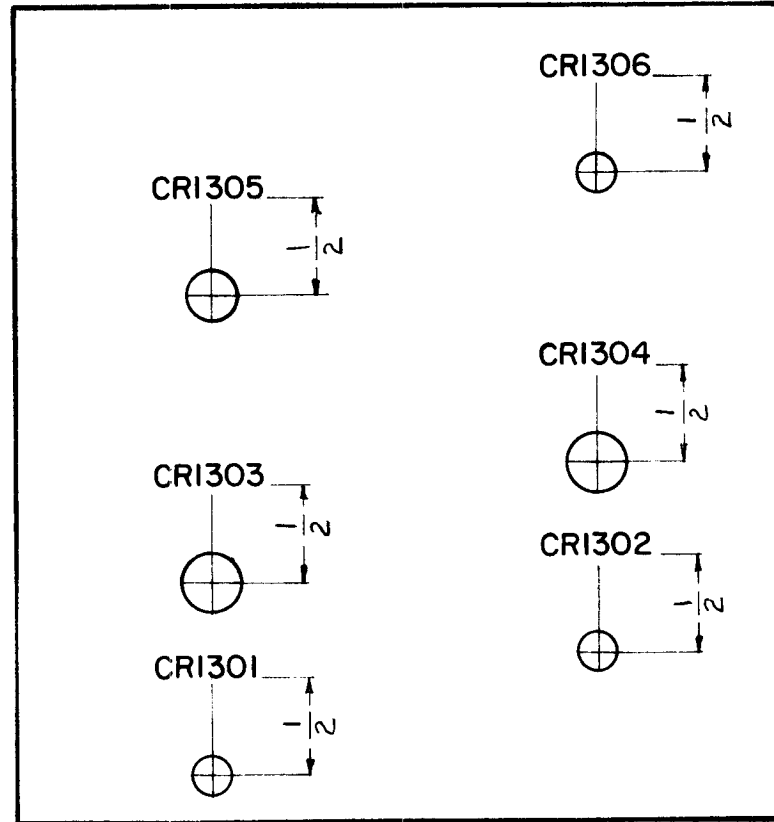
DATE

1

HFR-1/C

6-1-62

LD-1108



ALL LETTERING TO BE 1/8" HIGH, BLACK LUSTERLESS GOTHIC.

MARKING PROCESS: AS PER TMC SPECIFICATION S-727

REF: MS-2945(2)

							REQ.	ITEM	PART NO.	M. GELLMAN	DESCRIPTION	SYMBOL	
										THE TECHNICAL MATERIEL CORP. MAMARONECK, NEW YORK			
							STOCK SIZE			LETTERING, PLATE			
							MATERIAL			HEAT CONDUCTOR			
SYM	DESCRIPTION	DATE	CH. NO.	DRAFTS	CHECKER	ENG. APP.			G.S.	<i>HO</i>	<i>BP</i>		
UNLESS OTHERWISE SPECIFIED: DIMENSIONS ARE IN INCHES TOLERANCES ON FRAC. ± 1/64 DEC. ± .005 ANGLES ± 1/2°		SCALE: MAXIMUM ALLOWABLE TOLERANCES HAVE BEEN DETERMINED AND ANY DEVIATIONS WILL BE CAUSE FOR REJECTION. REMOVE ALL BURRS AND SHARP EDGES					TYPE & TEMPER		HEATTREAT. SPEC.	DRAWN	CHECKED	FINAL APPROVAL	
							FINISH & SPEC. NO.		ELEC. DES. APP.	MECH. DES. APP.	LD-1108		

THE CONTENTS OF THIS DRAWING ARE THE EXCLUSIVE PROPERTY OF THE TECHNICAL MATERIEL CORP. ITS UNAUTHORIZED USE OR REPRODUCTION IN WHOLE OR IN PART IS STRICTLY FORBIDDEN.

REQ. PER UNIT

MODEL

USED ON ASS'Y. NO.

DATE

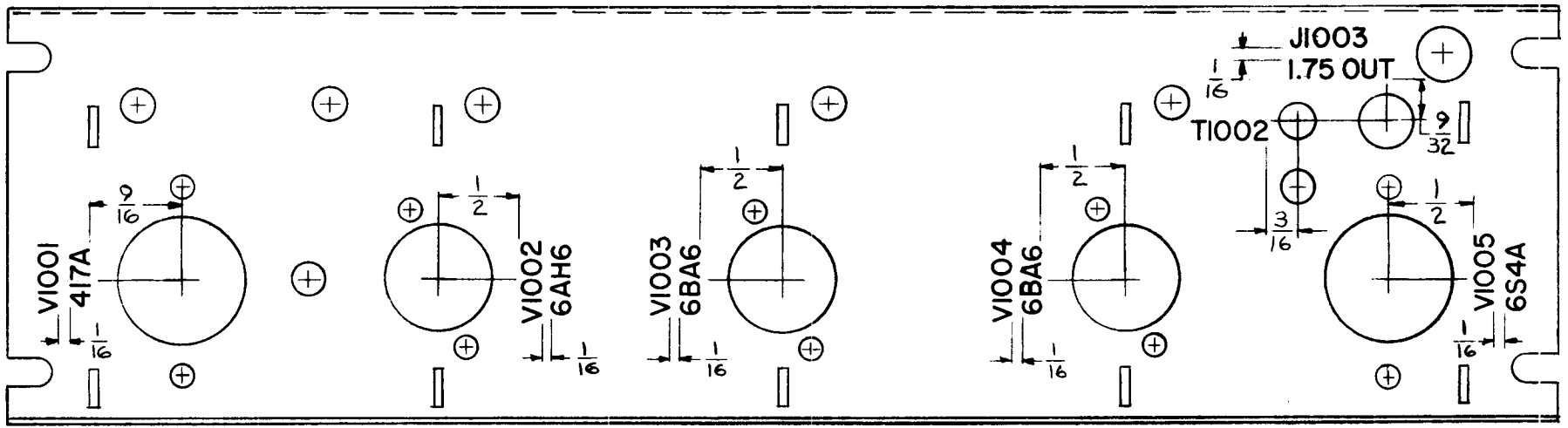
LD-1112

1

HFR-1/T

A-2340

6-13-62



1/8 HIGH BLACK LUSTERLESS GOTHIC LETTERING.
 MARKING PROCESS: AS PER TMC SPECIFICATION S-727

REF: MS-2891(2)

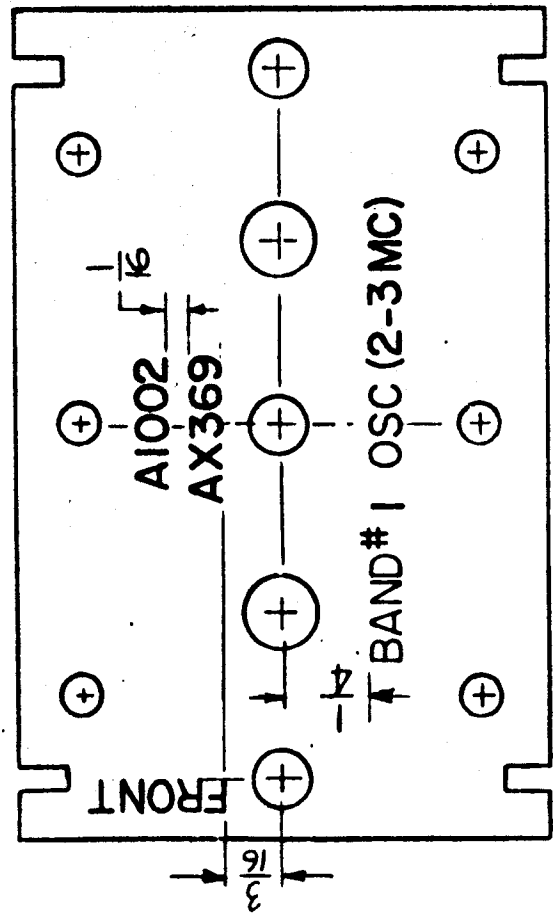
REQ.	ITEM	PART NO.	DESCRIPTION			SYMBOL
			ANGAR			
STOCK SIZE			THE TECHNICAL MATERIEL CORP. MAMARONECK, NEW YORK			
MATERIAL			LETTERING, R.F. CHASSIS			
SYM	DESCRIPTION	DATE	CH. NO.	DRAFTS	CHECKER	ENG. APP.
UNLESS OTHERWISE SPECIFIED: DIMENSIONS ARE IN INCHES TOLERANCES ON FRAC. ± 1/64 DEC. ± .005 ANGLES ± 1/2°		SCALE: DO NOT SCALE MAXIMUM ALLOWABLE TOLERANCES HAVE BEEN DETERMINED AND ANY DEVIATIONS WILL BE CAUSE FOR REJECTION. REMOVE ALL BURRS AND SHARP EDGES				
TYPE & TEMPER		HEATTREAT. SPEC.		DRAWN	CHECKED	FINAL APPROVAL
FINISH & SPEC. NO.		ELEC. DES. APP.		MECH. DES. APP.		LD-1112

LD-1113

USED ON
 ASSY. NO. DATE
 HFR-1/T A-2363 6-16-62

REQ. UNIT
 MODEL
 HFR-1/T

THE CONTENTS OF THIS DRAWING ARE THE EXCLUSIVE PROPERTY OF THE TECHNICAL MATERIEL CORP. ITS UNAUTHORIZED USE OR REPRODUCTION IN WHOLE OR IN PART IS STRICTLY FORBIDDEN.



MARKING PROCESS: AS PER TMC SPECIFICATION S-777

- NOTES ~ ① ALL LETTERING TO BE $\frac{3}{32}$ " HIGH
 BLACK GOTHIC.
 ② LETTER GROUPS TO BE CENTERED ON HOLES.

REF PX-650

REQ. UNIT	ITEM	PART NO.	DESCRIPTION	SYMBOL
			HUNGER	
			THE TECHNICAL MATERIEL CORP. MAMARONECK, NEW YORK	
			LETTERING, OSC. TERMINAL BOARD BAND #1	
DATE	CH. NO.	DRAFTS	CHECKER	ENG. APP.
SCALE: DO NOT SCALE				
UNLESS OTHERWISE SPECIFIED: DIMENSIONS ARE IN INCHES ANGLES ON PARTS: 1/2 DEG. ± .005 ANGLES 1/20				
MAXIMUM ALLOWABLE TOLERANCES HAVE BEEN DETERMINED AND ANY DEVIATIONS WILL BE CAUSE FOR REJECTION. REMOVE ALL BURRS AND SHARP EDGES				
MATERIAL			DRAWN	
STOCK SIZE			CHECKED	
TYPE & TEMPER			HEAT TREAT. SPEC.	
FINISH & SPEC. NO.			ELEC. DES. APP. MECH. DES. APP.	
R. Juchin			A. He	
i. ANGER			BP	
LD-1113			FINAL APPROVAL	

THE CONTENTS OF THIS DRAWING ARE THE EXCLUSIVE PROPERTY OF THE TECHNICAL MATERIEL CORP. ITS UNAUTHORIZED USE OR REPRODUCTION IN WHOLE OR IN PART IS STRICTLY FORBIDDEN.

REQ. PER UNIT

USED ON

MODEL

ASS'Y. NO.

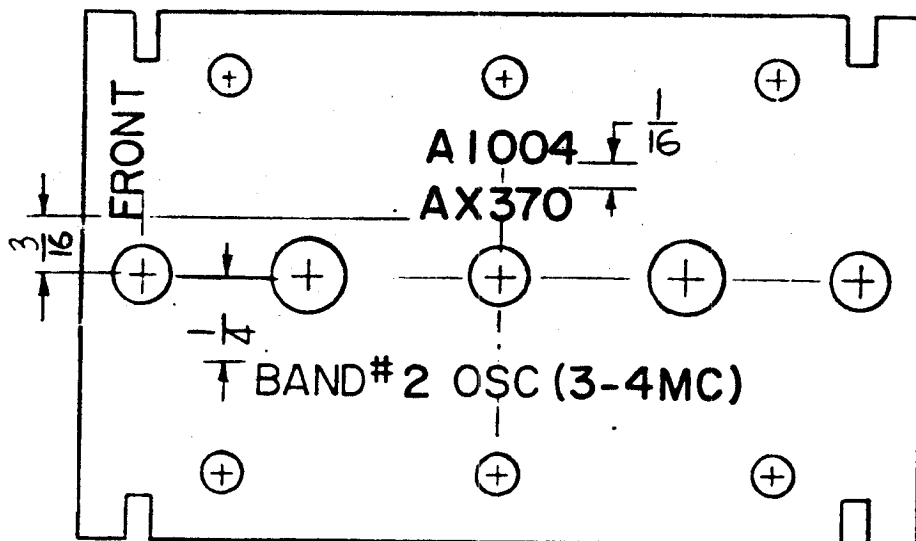
DATE

HFR-1/T

A-2364

6-16-62

LD-1114



MARKING PROCESS: AS PER TMC SPECIFICATION S-727

- NOTES ~ ① ALL LETTERING TO BE $\frac{3}{32}$ " HIGH BLACK GOTHIC.
 ② LETTER GROUPS TO BE CENTERED ON HOLES.

REF: PX-650

							REQ. ITEM	PART NO.	ANGER	DESCRIPTION	SYMBOL
									THE TECHNICAL MATERIEL CORP. MAMARONECK, NEW YORK		
									LETTERING, OSC. TERMINAL BOARD		
									BAND # 2		
SYM	DESCRIPTION	DATE	CH. NO.	DRAFTS	CHECKER	ENG. APP.			R. Lurkin	Adc	GP
UNLESS OTHERWISE SPECIFIED: DIMENSIONS ARE IN INCHES TOLERANCES ON FRAC $\pm 1/64$ DEC. $\pm .005$ ANGLES $\pm 1/2^\circ$		SCALE: DO NOT SCALE							DRAWN	CHECKED	FINAL APPROVAL
		MAXIMUM ALLOWABLE TOLERANCES HAVE BEEN DETERMINED AND ANY DEVIATIONS WILL BE CAUSE FOR REJECTION. REMOVE ALL BURRS AND SHARP EDGES					TYPE & TEMPER HEATTREAT. SPEC.		LD-1114		
							FINISH & SPEC. NO.		ELEC. DES. APP	MECH. DES. APP	

THE CONTENTS OF THIS DRAWING ARE THE EXCLUSIVE PROPERTY OF THE TECHNICAL MATERIEL CORP. ITS UNAUTHORIZED USE OR REPRODUCTION IN WHOLE OR IN PART IS STRICTLY FORBIDDEN.

REQ. PER UNIT

USED ON

MODEL

ASS'Y. NO.

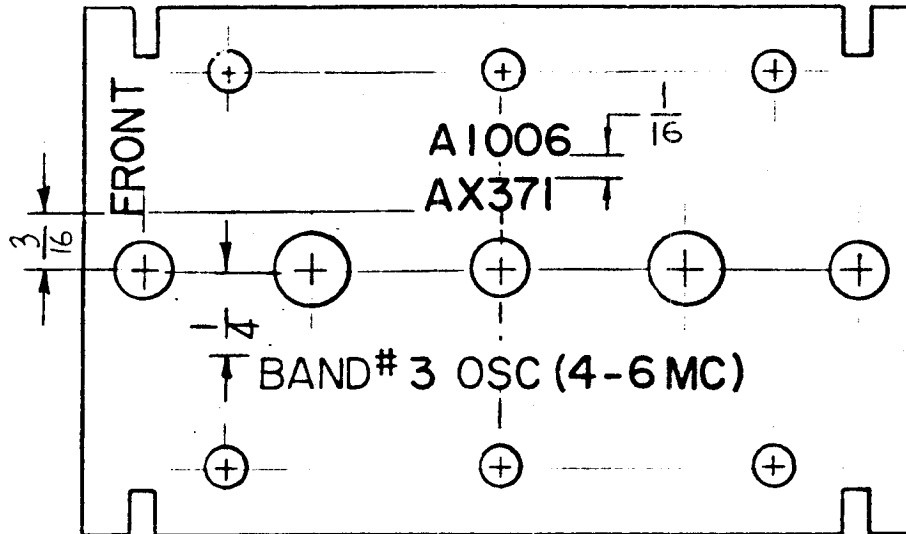
DATE

HFR-1/T

A2365

6-16-62

LD-1115



MARKING PROCESS: AS PER TMC SPECIFICATION S-777

NOTES ~ ① ALL LETTERING TO BE $\frac{3}{32}$ " HIGH BLACK GOTHIC.

② LETTER GROUPS TO BE CENTERED ON HOLES.

REF PX-650

SYM	DESCRIPTION	DATE	CH. NO.	DRAFTS	CHECKER	ENG. APP.	REQ. ITEM	PART NO.	FINGER	DESCRIPTION	SYMBOL
										THE TECHNICAL MATERIEL CORP. MAMARONECK, NEW YORK	
										LETTERING, OSC. TERMINAL BOARD	
										BAND #3	
									R. Turchin	H. Se	CP
									DRAWN	CHECKED	FINAL APPROVAL
											LD-1115

UNLESS OTHERWISE SPECIFIED - DIMENSIONS ARE IN INCHES TOLERANCES ON

SCALE: DO NOT SCALE

MAXIMUM ALLOWABLE TOLERANCES HAVE BEEN DETERMINED AND ANY DEVIATIONS WILL BE CAUSE FOR REJECTION. REMOVE ALL BURRS AND SHARP EDGES

FRACTION ± 1/64 DEC. ± .005 ANGLES ± 1/2°

FINISH & SPEC. NO.

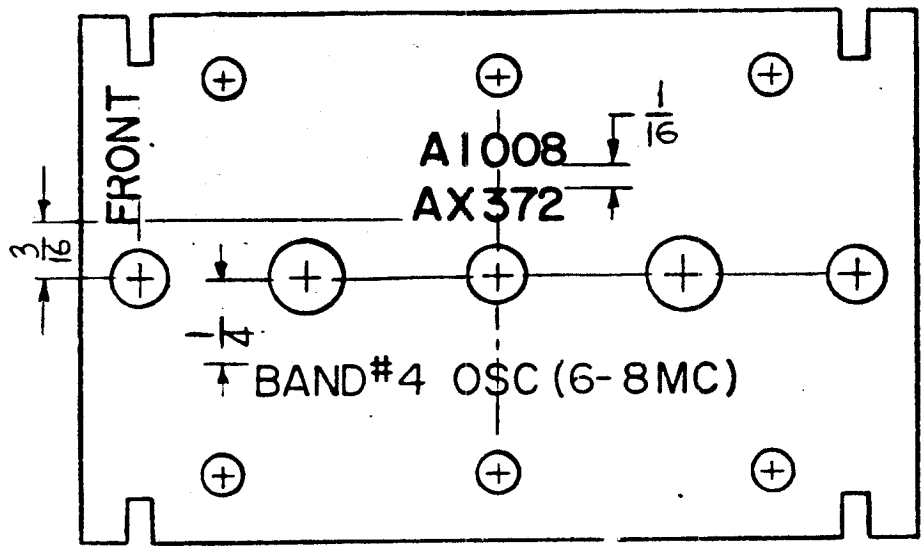
ELEC. DES. APP.

MECH. DES. APP.

THE CONTENTS OF THIS DRAWING ARE THE EXCLUSIVE PROPERTY OF THE TECHNICAL MATERIEL CORP. ITS UNAUTHORIZED USE OR REPRODUCTION IN WHOLE OR IN PART IS STRICTLY FORBIDDEN.

REQ. PER UNIT	USED ON		
	MODEL	ASSEMBLY NO.	DATE
1	HFR-1/T	A-2366	6-15-62

LD-1116



MARKING PROCESS: AS PER TMC SPECIFICATION S-727

- NOTES ~ ① ALL LETTERING TO BE 3/32" HIGH BLACK GOTHIC.
 ② LETTER GROUPS TO BE CENTERED ON HOLES.

REF: PX-650

					REQ. ITEM	PART NO.	ANGER	DESCRIPTION	SYMB L	
					STOCK SIZE		THE TECHNICAL MATERIEL CORP. MAMARONECK, NEW YORK			
					MATERIAL		LETTERING, OSC. TERMINAL BOARD BAND # 4			
SYM	DESCRIPTION	DATE	CH. NO.	DRAFTS	CHECKER	ENG. APP.	DRAWN	CHECKED	FINAL APPROVAL	
UNLESS OTHERWISE SPECIFIED: DIMENSIONS ARE IN INCHES TOLERANCES ON FRAC ± 1/64 DEC. ± .005 ANGLES ± 1/2°		SCALE: DO NOT SCALE				TYPE & TEMPER		HEATTREAT. SPEC.		
		MAXIMUM ALLOWABLE TOLERANCES HAVE BEEN DETERMINED AND ANY DEVIATIONS WILL BE CAUSE FOR REJECTION. REMOVE ALL BURRS AND SHARP EDGES				FINISH & SPEC NO.		ELEC. DES. APP. MECH. DES. APP.		LD-1116

ALL CONTENTS OF THIS DRAWING ARE THE EXCLUSIVE PROPERTY OF THE TECHNICAL MATERIEL CORP. ITS UNAUTHORIZED USE OR REPRODUCTION IN WHOLE OR IN PART IS STRICTLY FORBIDDEN.

QTY. PER UNIT

1 HFR-1/T

USED ON

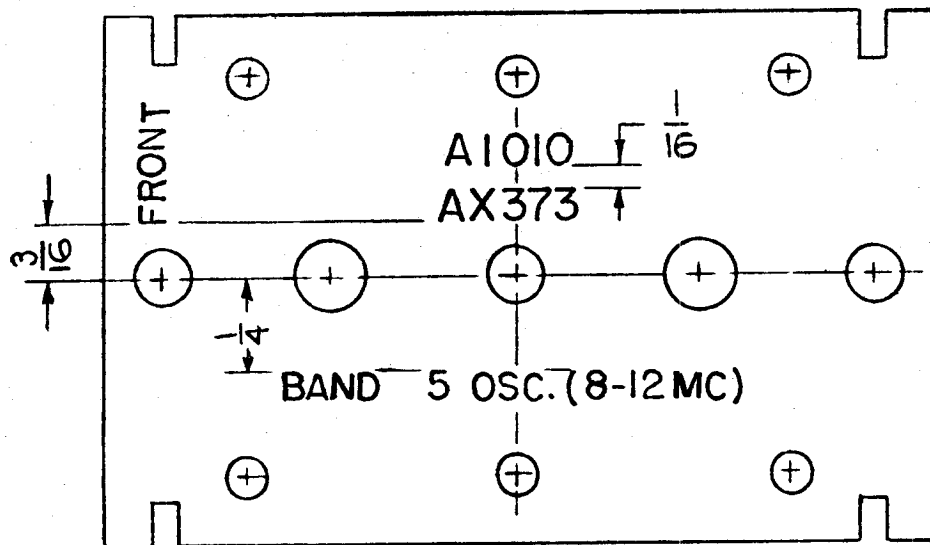
MODEL

A-2367

DATE

6-19-62

LD-1117



MARKING PROCESS: AS PER T M C SPECIFICATION S-727

NOTES:

- 1- ALL LETTERING TO BE $\frac{3}{32}$ HIGH BLACK GOTHIC.
- 2- LETTER GROUPS TO BE CENTERED ON HOLES.

REF-PX-650

SYM	DESCRIPTION	DATE	CH. NO.	DRAFTS	CHECKER	ENG. APP.	REQ. ITEM	PART NO.	ANGER	DESCRIPTION	SYMBOL
									THE TECHNICAL MATERIEL CORP. MAMARONECK, NEW YORK		
									LETTERING, OSC, TERMINAL BOARD		
									BAND #5		
									RUZZO	W	BP
									ANGER		LD-1117

UNLESS OTHERWISE SPECIFIED:

DIMENSIONS ARE IN INCHES

TOLERANCES

SCALE: DO NOT SCALE

MAXIMUM ALLOWABLE TOLERANCES HAVE BEEN DETERMINED AND ANY DEVIATIONS WILL BE CAUSE FOR REJECTION. REMOVE ALL BURRS AND SHARP EDGES.

FINISH & SPEC NO.

THE CONTENTS OF THIS DRAWING ARE THE EXCLUSIVE PROPERTY OF THE TECHNICAL MATERIEL CORP. ITS UNAUTHORIZED USE OR REPRODUCTION IN WHOLE OR IN PART IS STRICTLY FORBIDDEN.

REQ. PER UNIT

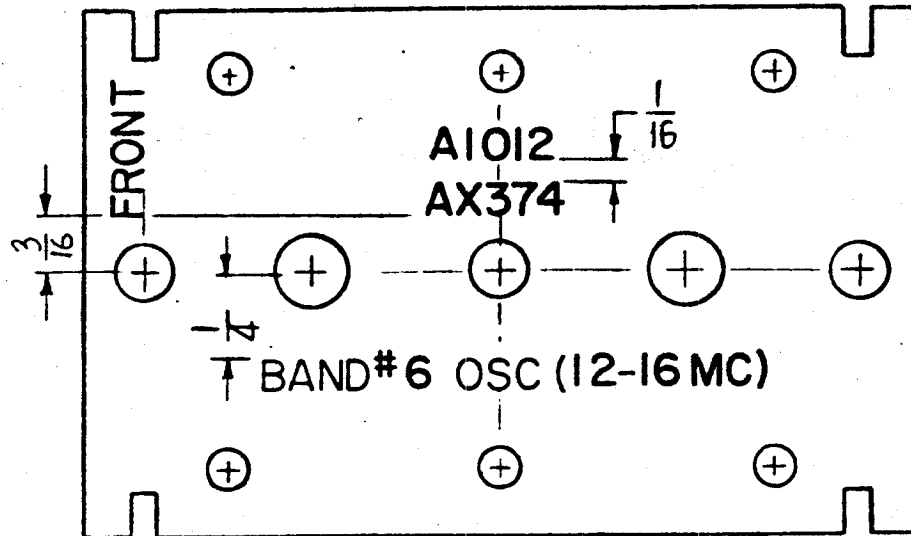
USED ON

MODEL
HFR-1/T

ASSY. NO.
A-2368

DATE
6-18-62

LD-1118



MARKING PROCESS: AS PER TMC SPECIFICATION S-727

NOTES ~ ① ALL LETTERING TO BE $\frac{3}{32}$ " HIGH BLACK GOTHIC.

② LETTER GROUPS TO BE CENTERED ON HOLES.

REF PX-650

QTY	DESCRIPTION	DATE	CH. NO.	DRAFTS	CHECKER	ENG. APP.	REQ. ITEM	PART NO.	DESCRIPTION	SYMBOL
									HNGER	
									THE TECHNICAL MATERIEL CORP. MAMARONECK, NEW YORK	
									LETTERING, OSC. TERMINAL BOARD	
									BAND#6	
									R. Swick	RP
									LD-1118	

UNLESS OTHERWISE SPECIFIED:

DIMENSIONS ARE IN INCHES

TOLERANCES ON

FRACTIONS ± .005 ANGLES ± 1/2°

SCALE: DO NOT SCALE

MAXIMUM ALLOWABLE TOLERANCES HAVE BEEN DETERMINED AND ANY DEVIATIONS WILL BE CAUSE FOR REJECTION. REMOVE ALL BURRS AND SHARP EDGES

TYPE & TEMPER

HEATTREAT. SPEC

DRAWN

CHECKED

FINAL APPROVAL

FINISH & SPEC NO.

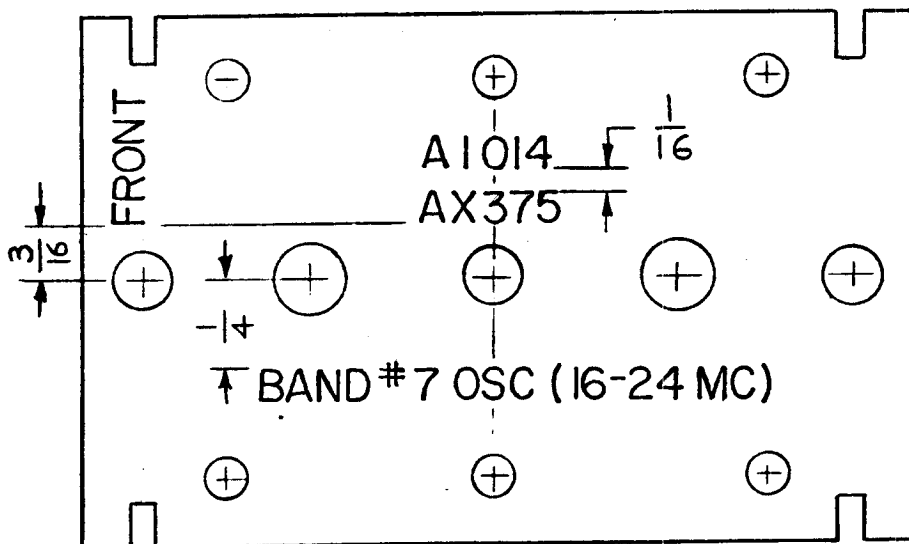
ELEC. DES. APP.

MECH. DES. APP.

THIS DRAWING IS THE PROPERTY OF THE TECHNICAL MATERIEL CORP. AND IS TO BE USED ONLY FOR THE PURPOSES SPECIFIED. ITS UNAUTHORIZED USE OR REPRODUCTION IN WHOLE OR IN PART IS STRICTLY FORBIDDEN.

REQ. PER UNIT	USED ON		
	MODEL	ASSY. NO.	DATE
1	HFR-1/T	A-2369	6-19-62

LD-1119



NOTES:
 1- ALL LETTERING TO BE $\frac{3}{32}$ HIGH BLACK GOTHIC.
 2- LETTER GROUPS TO BE CENTERED ON HOLES.
 MARKING PROCESS: AS PER TMC SPECIFICATION S-727

REF. PX-650

						REQ.	ITEM	PART NO.	ANGER	DESCRIPTION	SYMBOL
									THE TECHNICAL MATERIEL CORP. HAMARONECK, NEW YORK		
									LETTERING, OSC. TERMINAL BOARD BAND #7		
									RUZZO	J.A.	OP
									DRAWN	CHECKED	FINAL APPROVAL
									J. ANGER		LD-1119

UNLESS OTHERWISE SPECIFIED:
 DIMENSIONS ARE IN INCHES
 UNLESS OTHERWISE SPECIFIED

SCALE: DO NOT SCALE
 MAXIMUM ALLOWABLE TOLERANCES HAVE BEEN DETERMINED AND ANY DEVIATIONS WILL BE GAUGED FOR REJECTION.
 FINISH ALL BORES AND SHARP EDGES

TYPE & TEMP. HEAT TREAT. SPEC. DRAWN CHECKED FINAL APPROVAL
 FIGURE NO. REV. DATE

THE CONTENTS OF THIS DRAWING ARE THE EXCLUSIVE PROPERTY OF THE TECHNICAL MATERIEL CORP. ITS UNAUTHORIZED USE OR REPRODUCTION IN WHOLE OR IN PART IS STRICTLY FORBIDDEN.

REQ. PER UNIT

USED ON

MODEL

ASSY. NO.

DATE

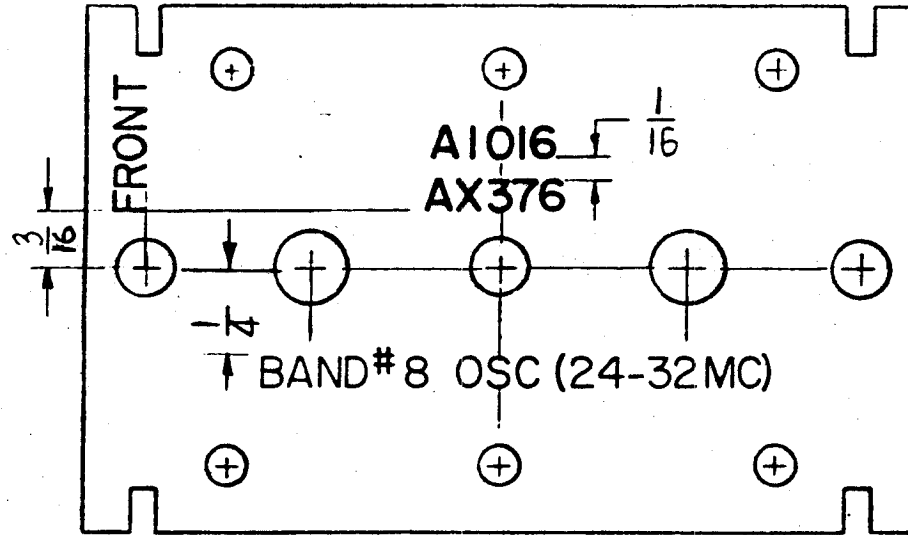
1

HFR-1/T

A-2370

6-18-62

LD-1120



MARKING PROCESS: AS PER T MC SPECIFICATION 5-727

NOTES ~ ① ALL LETTERING TO BE $\frac{3}{32}$ " HIGH BLACK GOTHIC.

② LETTER GROUPS TO BE CENTERED ON HOLES.

REF PX-650

REQ. ITEM	PART NO.	DESCRIPTION	SYMBOL
		ANGER	
STOCK SIZE		THE TECHNICAL MATERIEL CORP. MAMARONECK, NEW YORK	
MATERIAL		LETTERING, OSC. TERMINAL BOARD BAND # 8	
SYM	DESCRIPTION	DATE	CH. NO. DRAFTS CHECKER ENG. APP.
UNLESS OTHERWISE SPECIFIED: DIMENSIONS ARE IN INCHES TOLERANCES ON FRAC. $\pm 1/64$ DEC. $\pm .005$ ANGLES $\pm 1/4^\circ$		SCALE: DO NOT SCALE MAXIMUM ALLOWABLE TOLERANCES HAVE BEEN DETERMINED AND ANY DEVIATIONS WILL BE CAUSE FOR REJECTION. REMOVE ALL BURRS AND SHARP EDGES	
TYPE & TEMPER	HEATTREAT. SPEC.	DRAWN	CHECKED
FINISH & SPEC. NO.	ELEC. DES. APP.	MECH. DES. APP.	
			LD-1120

THE CONTENTS OF THIS DRAWING ARE THE EXCLUSIVE PROPERTY OF THE TECHNICAL MATERIEL CORP. ITS UNAUTHORIZED USE OR REPRODUCTION IN WHOLE OR IN PART IS STRICTLY FORBIDDEN.

REQ. PER UNIT

1

USED ON

MODEL

HFR-1/T

ASS'Y. NO.

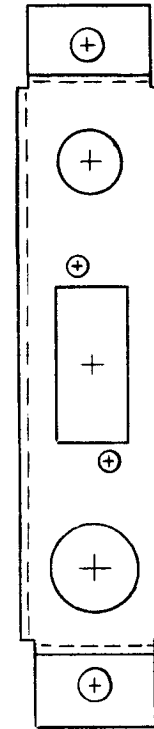
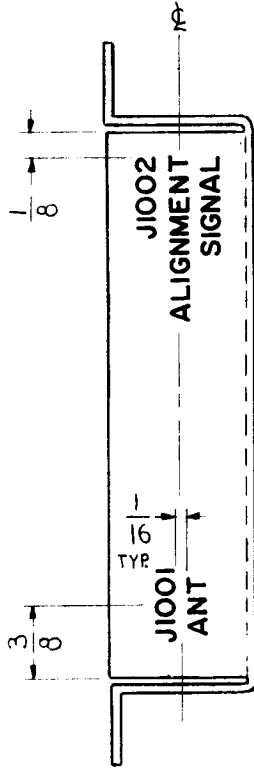
A-3041

DATE

7-3-62

LD-1129

A



NOTE
 MARKING PROCESS:
 AS PER TMC SPEC S-727
 LETTERING:
 3/32 HIGH BLACK GOTHIC

REF. TMC DWG MS-2859

REF: MS-2859

						REQ.	ITEM	PART NO.	DESCRIPTION	SYMBOL	
									THE TECHNICAL MATERIEL CORP. MAMARONECK, NEW YORK		
						STOCK SIZE			LETTERING, ANT. INPUT BRACKET		
						MATERIAL					
A	LETTERING WAS "WHITE"	11-1-62	7584	of	JOR						
SYM	DESCRIPTION	DATE	CH. NO.	DRAFTS	CHECKER	ENG. APP.	MATERIAL		DRAWN	CHECKED	FINAL APPROVAL
UNLESS OTHERWISE SPECIFIED: DIMENSIONS ARE IN INCHES TOLERANCES ON FRAC. ± 1/64 DEC. ± . 5 ANGLES ± 1/2°		SCALE: DO NOT SCALE							Granfilippo	8/220	BT
MAXIMUM ALLOWABLE TOLERANCES HAVE BEEN DETERMINED AND ANY DEVIATIONS WILL BE CAUSE FOR REJECTION. REMOVE ALL BURRS AND SHARP EDGES							TYPE & TEMPER	HEAT TREAT. SPEC.	J. ANGER		
						FINISH & SPEC. NO.		ELEC. DES. APP.	MECH. DES. APP.	LD-1129	A

THE CONTENTS OF THIS DRAWING ARE THE EXCLUSIVE PROPERTY OF THE TECHNICAL MATERIEL CORP. ITS UNAUTHORIZED USE OR REPRK)DU TION IN WHOLE OR IN PART IS STRICTLY FORBIDDEN.

REQ. PER UNIT

1

USED ON

MODEL

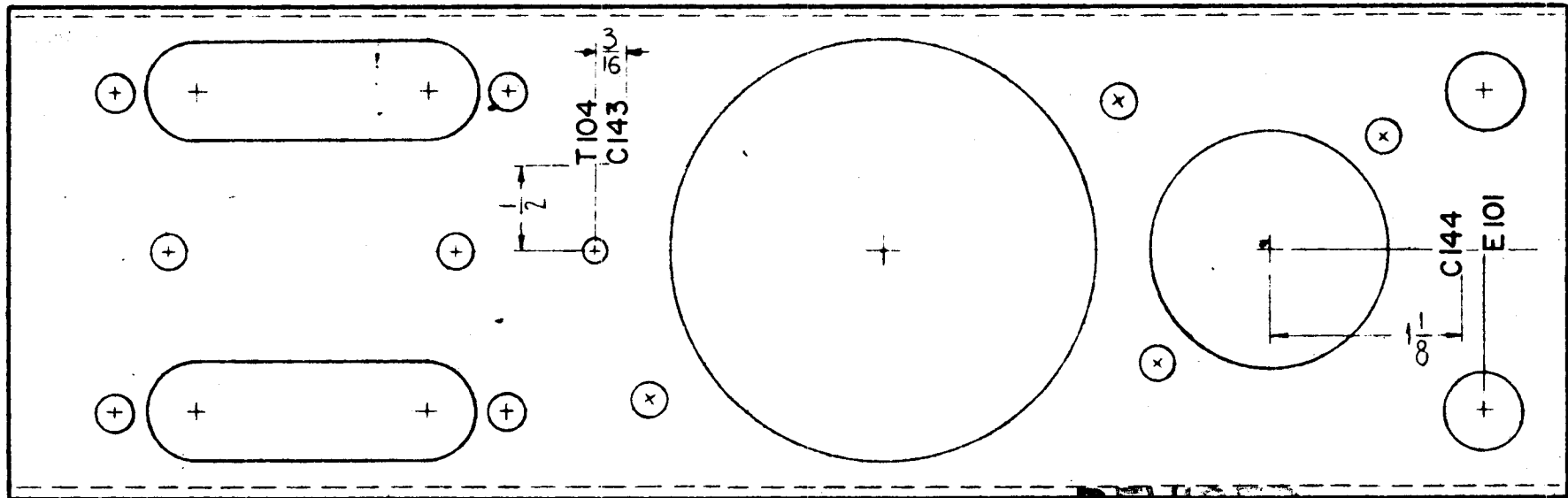
TRX-1

ASS'Y. NO.

DATE

7-10-62

LD-1130



REVISED

NOV 19 1962

NOTE:

ALL LETTERING, $\frac{1}{8}$ HIGH BLACK GOTHIC
MARKING PROCESS: AS PER TMC SPECIFICATION S-727.

Out to Nick



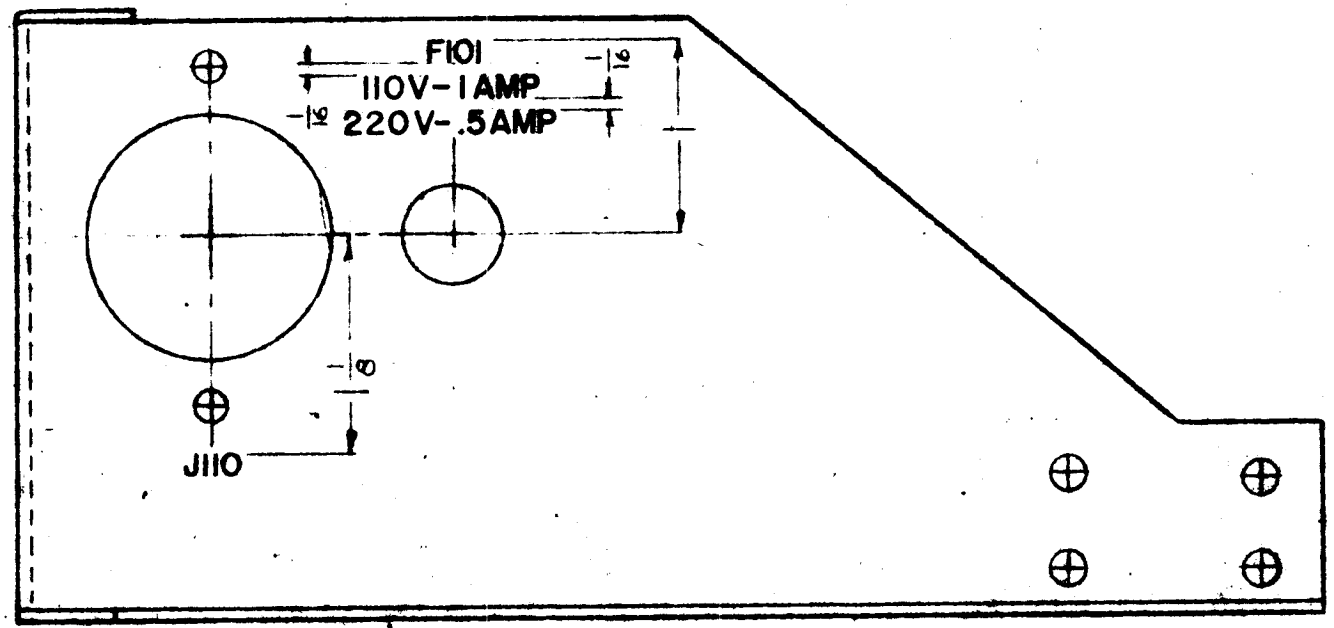
REF. TMC DWG. MS-2938

REQ.	ITEM	PART NO.	DESCRIPTION			SYMBOL
			THE TECHNICAL MATERIEL CORP. MAMARONECK, NEW YORK			
			LETTERING, POWER SUPPLY CHASSIS			
			MATERIAL			
			TYPE & TEMPER HEATTREAT. SPEC.			
			FINISH & SPEC. NO.			
			DRAWN			
			CHECKED			
			FINAL APPROVAL			
			ELEC. DES. APP. MECH. DES. APP.			
			LD-1130			

THE CONTENTS OF THIS DRAWING ARE THE EXCLUSIVE PROPERTY OF THE TECHNICAL MATERIEL CORP. ITS UNAUTHORIZED USE OR REPRODUCTION IN WHOLE OR IN PART IS STRICTLY FORBIDDEN.

REQ. PER UNIT 1	MODEL	USED ON	
	TRX-1	ASSY. NO.	DATE
			7-10-62

LD-1134 - 1



REVISED

NOV 19 1962

NOTE:
ALL LETTERING, 1/8 HIGH BLACK GOTHIC.
MARKING PROCESS: AS PER TMC SPECIFICATION S-727

Out to Rick

REF. TMC DWG MS-2943

REQ.	ITEM	PART NO.	DESCRIPTION				SYMBOL		
			THE TECHNICAL MATERIEL CORP. MAMARONECK, NEW YORK						
			STOCK SIZE						
1	LETTERING CLARIFIED	7-20-62	#	G.S.			LETTERING, POWER CHASSIS		
SYM	DESCRIPTION	DATE	CH. NO.	DRAFTS	CHECKER	ENG. APP.	MATERIAL		
							<i>Granfilippo</i>		
UNLESS OTHERWISE SPECIFIED: DIMENSIONS ARE IN INCHES TOLERANCES ON FRAC. ± 1/64 DEC. ± .005 ANGLES ± 1/2°			SCALE: MAXIMUM ALLOWABLE TOLERANCES HAVE BEEN DETERMINED AND ANY DEVIATIONS WILL BE CAUSE FOR REJECTION. REMOVE ALL BURRS AND SHARP EDGES				TYPE & TEMPER	HEAT TREAT. SPEC.	
							DRAWN	CHECKED	FINAL APPROVAL
									LD-1134 1
FINISH & SPEC. NO.							ELEC. DES. APP.	MECH. DES. APP.	

THE CONTENTS OF THIS DRAWING ARE THE EXCLUSIVE PROPERTY OF THE TECHNICAL MATERIEL CORP. ITS UNAUTHORIZED USE OR REPRODUCTION IN WHOLE OR IN PART IS STRICTLY FORBIDDEN.

REQ. PER UNIT

MODEL

USED ON

ASS'Y. NO.

DATE

1

GPR-92

A-2160

10-19-62

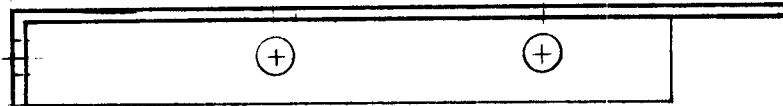
LD-1151

A

OBSOLETE

NO LONGER REQ.

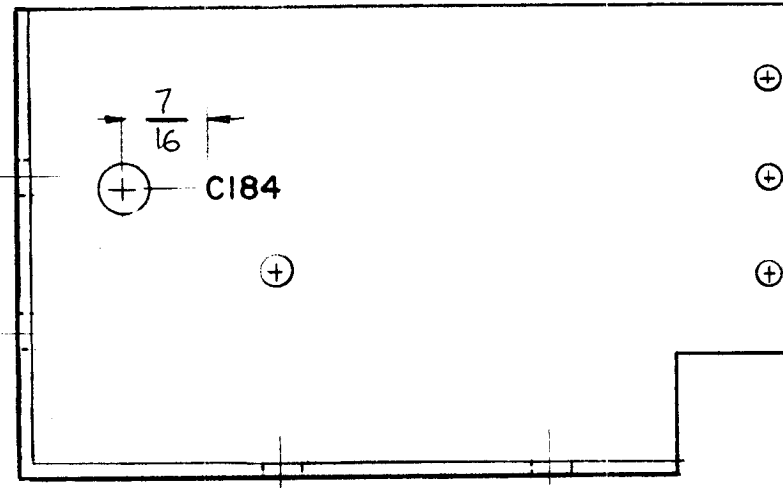
3-5-63



NOTE —

1/8 HIGH, BLACK LUSTERLESS GOTHIC, LETTERING.

MARKING PROCESS: AS PER TMC SPECIFICATION S-727
LETTERING TO BE CENTERED ON HOLE



REF: MS-2642

							REQ.	ITEM	PART NO.	GELLMAN	DESCRIPTION	SYMBOL						
										THE TECHNICAL MATERIEL CORP. MAMARONECK, NEW YORK								
							STOCK SIZE			LETTERING, SHIELD, IFO								
							MATERIAL											
A	NO LONGER REQ.		3-5-63	8366														
SYM	DESCRIPTION	DATE	CH. NO.	DRAFTS	CHECKER	ENG. APP.	MATERIAL		G.D.L.		JMA BP							
UNLESS OTHERWISE SPECIFIED: DIMENSIONS ARE IN INCHES TOLERANCES ON FRAC. ± 1/64 DEC. ± .005 ANGLES ± 1/2°							SCALE:		TYPE & TEMPER		HEAT TREAT. SPEC.		DRAWN		CHECKED		FINAL APPROVAL	
							MAXIMUM ALLOWABLE TOLERANCES HAVE BEEN DETERMINED AND ANY DEVIATIONS WILL BE CAUSE FOR REJECTION. REMOVE ALL BURRS AND SHARP EDGES						LD-1151		A			
							FINISH & SPEC. NO.		ELEC. DES. APP.		MECH. DES. APP.							

THE CONTENTS OF THIS DRAWING ARE THE EXCLUSIVE PROPERTY OF THE TECHNICAL MATERIEL CORP. ITS UNAUTHORIZED USE OR REPRODUCTION IN WHOLE OR IN PART IS STRICTLY FORBIDDEN.

REQ. PER UNIT

MODEL

USED ON

ASS'Y. NO.

DATE

1

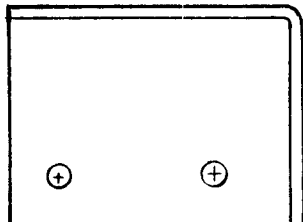
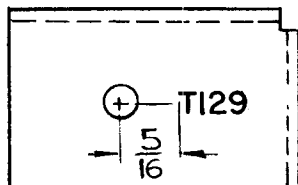
GPR-92

A-2160

10-19-62

LD-1152

A



NOTE -

1/8 HIGH, BLACK LUSTERLESS
GOTHIC, LETTERING.

MARKING PROCESS: AS PER TMC SPECIFICATION S-727

LETTERING TO BE CENTERED ON HOLE

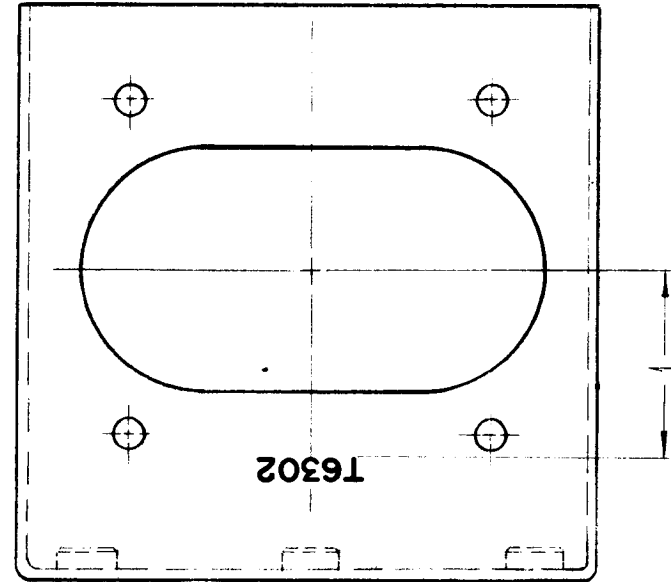
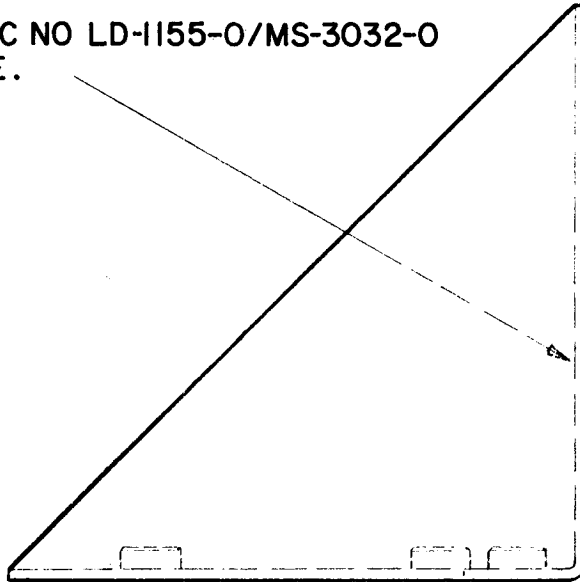
REF: MS-2641

REQ.	ITEM	PART NO.	GELLMAN	DESCRIPTION	SYMBOL				
				THE TECHNICAL MATERIEL CORP. MAMARONECK, NEW YORK					
				LETTERING, BRACKET, COIL MTG					
A	SYM. T129 WAS LOG	3-5-63	8366	<i>[Signature]</i>	<i>[Signature]</i>				
SYM	DESCRIPTION	DATE	CH. NO.	DRAFTS	CHECKER	ENG. APP.			
UNLESS OTHERWISE SPECIFIED: DIMENSIONS ARE IN INCHES TOLERANCES ON FRAC. ± 1/64 DEC. ± .05 ANGLES ± 1/2°		SCALE: MAXIMUM ALLOWABLE TOLERANCES HAVE BEEN DETERMINED AND ANY DEVIATIONS WILL BE CAUSE FOR REJECTION. REMOVE ALL BURRS AND SHARP EDGES							
					G.D.L.	<i>[Signature]</i>	<i>[Signature]</i>	<i>[Signature]</i>	
					DRAWN	CHECKED	FINAL APPROVAL		
					<i>[Signature]</i>	<i>[Signature]</i>	LD-1152	A	
					FINISH & SPEC. NO.	ELE. DES. APP.	MECH. DES. APP.		

THE CONTENTS OF THIS DRAWING ARE THE EXCLUSIVE PROPERTY OF THE TECHNICAL MATERIEL CORP. ITS UNAUTHORIZED USE OR REPRODUCTION IN WHOLE OR IN PART IS STRICTLY FORBIDDEN.

REQ. PER UNIT	USED ON			LD-1155	O
	MODEL	ASS'Y. NO.	DATE		
1	GPT200K	AX-398	7-7-62		

MARK TMC NO LD-1155-O/MS-3032-O ON INSIDE.



MARKING PROCESS:

AS PER TMC SPECIFICATION S-727.

LETTERING: 1/8 HIGH, BLACK GOTHIC, LOCATED AS SHOWN REF-TMC DWG. MS-3032

							REQ.	ITEM	PART NO.	F. BUDETTI	DESCRIPTION	SYMBOL
										THE TECHNICAL MATERIEL CORP. MAMARONECK, NEW YORK		
											MARKING, XMFR MTG. BRACKET	
											MARKING METHOD: AS PER TMC SPEC. S-727	
O	ORIGINAL RELEASE FOR PRODUCTION	3-264		A.M.								
SYM	DESCRIPTION	DATE	CH. NO.	DRAFTS	CHECKER	ENG. APP.				John C. Dietz	JCB	KAC
UNLESS OTHERWISE SPECIFIED:		SCALE: 1:1		MAXIMUM ALLOWABLE TOLERANCES HAVE BEEN DETERMINED AND ANY DEVIATIONS WILL BE CAUSE FOR REJECTION. REMOVE ALL BURRS AND SHARP EDGES			TYPE & TEMPER	HEAT TREAT. SPEC.	DRAWN	CHECKED	FINAL APPROVAL	
DIMENSIONS ARE IN INCHES											LD-1155 O	
TOLERANCES ON												
FRAC. ± 1/64 DEC. ± .5 ANGLES ± 1/2°							FINISH & SPEC. NO.		ELEC. DES. APP.	MECH. DES. APP.		

THE CONTENTS OF THIS DRAWING ARE THE EXCLUSIVE PROPERTY OF THE TECHNICAL MATERIEL CORP. ITS UNAUTHORIZED USE FOR REPRODUCTION IN WHOLE OR IN PART IS STRICTLY FORBIDDEN.

REQ. PER UNIT

1
1

MODEL

CMO-1
CMO-2

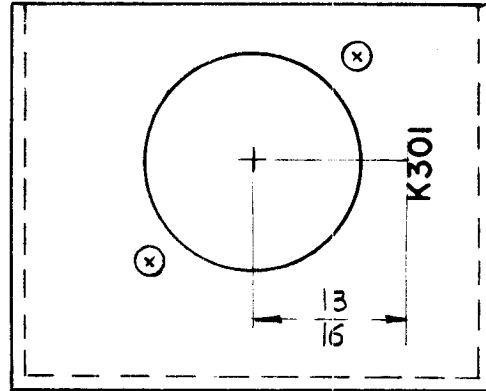
USED ON

ASS'Y. NO.

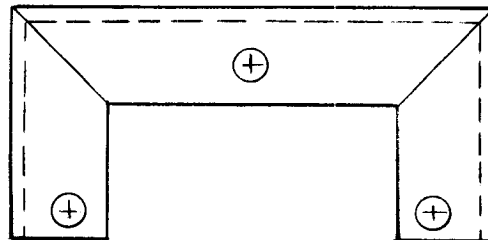
DATE

11-8-62
11-8-62

LD-1160



1 - MARKING PROCESS: AS PER TMC SPECIFICATION S-727
2 - LETTERING: 1/8 HIGH, BLACK GOTHIC, LOCATED AS SHOWN.

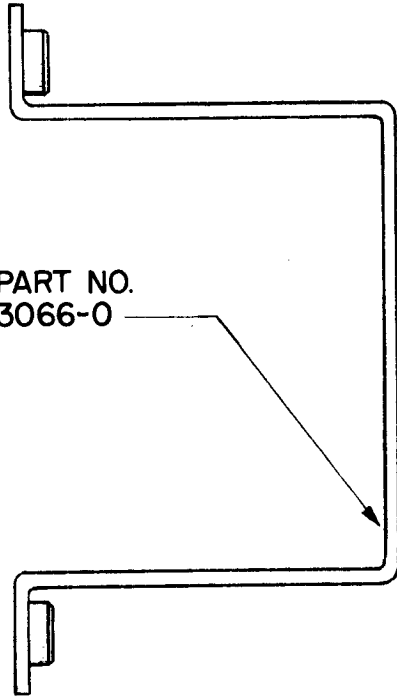


REF.- MS-2349

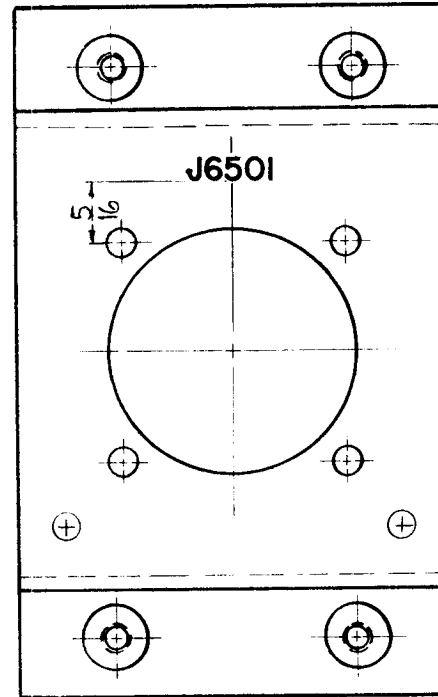
REQ.	ITEM	PART NO.	POSE	DESCRIPTION	SYMBOL
				THE TECHNICAL MATERIEL CORP. MAMARONECK. NEW YORK	
				STOCK SIZE	
				LETTERING, RELAY MTG	
				MATERIAL	
				G.D.L.	
				TYPE & TEMPER	
				HEAT TREAT. SPEC.	
				DRAWN	
				CHECKED	
				FINAL APPROVAL	
					LD-1160
				FINISH & SPEC. NO.	
				ELEC. DES. APP.	
				MECH. DES. APP.	

THE CONTENTS OF THIS DRAWING ARE THE EXCLUSIVE PROPERTY OF THE TECHNICAL MATERIEL CORP. ITS UNAUTHORIZED USE OR REPRODUCTION IN WHOLE OR IN PART IS STRICTLY FORBIDDEN.

REQ. PER UNIT	USED ON			LD-1174	O
	MODEL	ASS'Y. NO.	DATE		
1	GPT-200K	AX-399	11-27-62		



MARKING, TMC PART NO. LD-1174-O / MS-3066-O ON REAR.



MARKING PROCESS: AS PER TMC SPECIFICATION S-727.

LETTERING: 1/8 HIGH BLACK GOTHIC, LOCATED AS SHOWN.

							REQ.	ITEM	PART NO.	F. BUDETTI	DESCRIPTION	SYMBOL	
										THE TECHNICAL MATERIEL CORP. MAMARONECK, NEW YORK			
									STOCK SIZE	MARKING BRKT, CONNECTOR MTG.			
									MATERIAL	MARKING METHOD AS PER TMC SPEC S 727			
O	ORIGINAL RELEASE FOR PRODUCTION	3-264		A.M.						John C. Biele	JCS	RAC	
SYM	DESCRIPTION	DATE	CH. NO.	DRAFTS	CHECKER	ENG. APP.				DRAWN	CHECKED	FINAL APPROVAL	
UNLESS OTHERWISE SPECIFIED: DIMENSIONS ARE IN INCHES TOLERANCES ON FRAC. ± 1/64 DEC. ± .005 ANGLES ± 1/2°		SCALE: MAXIMUM ALLOWABLE TOLERANCES HAVE BEEN DETERMINED AND ANY DEVIATIONS WILL BE CAUSE FOR REJECTION. REMOVE ALL BURRS AND SHARP EDGES						TYPE & TEMPER	HEATTREAT. SPEC.				
									FINISH & SPEC. NO.	ELEC. DES. APP.	MECH. DES. APP.	LD-1174 O	

THE CONTENTS OF THIS DRAWING ARE THE EXCLUSIVE PROPERTY OF THE TECHNICAL MATERIEL CORP. ITS UNAUTHORIZED USE FOR REPRODUCTION IN WHOLE OR IN PART IS STRICTLY FORBIDDEN.

REQ. PER UNIT

1

LPP-3

USED ON

MODEL

ASS'Y. NO.

DATE

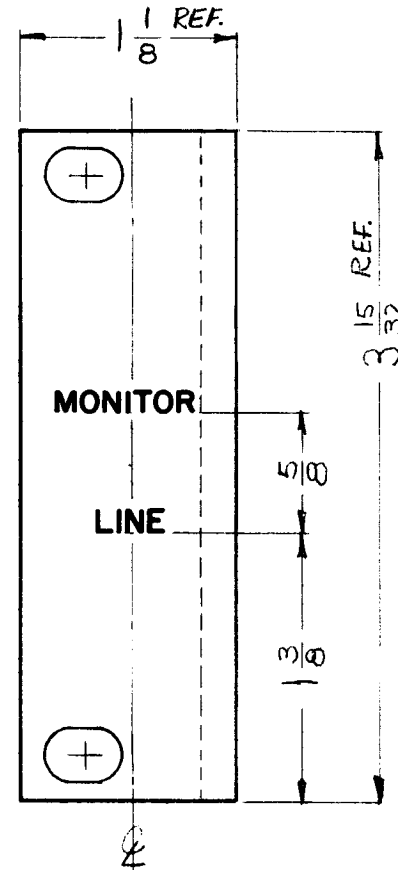
12-21-62

LD-1177

~UNLESS OTHERWISE SPECIFIED~

1~ ALL LETTERING TO BE 1/8 HIGH GOTHIC, WHITE FILLED.
2~ ALL LETTER GROUPS TO BE CENTERED ON CENTER LINE.

HEIGHT OF LETTERS	DEPTH OF STROKE	WIDTH OF STROKE
1/8	.010	.020



REF: MS-360 (1)

SYM	DESCRIPTION	DATE	CH. NO.	DRAFTS	CHECKER	ENG. APP.	REQ. ITEM	PART NO.	STRUMER	DESCRIPTION	SYMBOL
									THE TECHNICAL MATERIEL CORP. MAMARONECK. NEW YORK		
								STOCK SIZE	ENGRAVING, LEFT SUPPORT		
								MATERIAL			
	UNLESS OTHERWISE SPECIFIED DIMENSIONS ARE IN INCHES AND INCLUDE CHEMICALLY APPLIED OR PLATED FINISHES								<i>G. Green</i>	<i>J. De</i>	<i>BP</i>
		SCALE FULL							DRAWN	CHECKED	FINAL APPROVAL
								TYPE & TEMPER	HEAT TREAT. SPEC.		
											LD-1177
								FINISH & SPEC. NO.	ELEC. DES. APP.	MECH. DES. APP.	

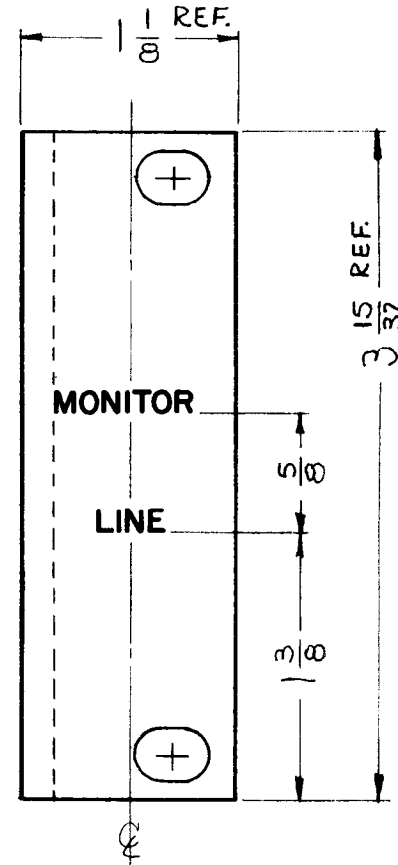
THE CONTENTS OF THIS DRAWING ARE THE EXCLUSIVE PROPERTY OF THE TECHNICAL MATERIEL CORP. ITS UNAUTHORIZED USE FOR REPRODUCTION IN WHOLE OR IN PART IS STRICTLY FORBIDDEN.

REQ. PER UNIT	USED ON		
	MODEL	ASS'Y. NO.	DATE
1	LPP-3		12-21-62

LD-1178

~UNLESS OTHERWISE SPECIFIED~
 1~ALL LETTERING TO BE 1/8 HIGH GOTHIC, WHITE FILLED.
 2~ALL LETTER GROUPS TO BE CENTERED ON CENTER LINE.

HEIGHT OF LETTERS	DEPTH OF STROKE	WIDTH OF STROKE
1/8	.010	.020



REF: MS-361 (1)

								REQ. ITEM	PART NO.	STUEHER	DESCRIPTION	SYMBOL	
											THE TECHNICAL MATERIEL CORP. MAMARONECK, NEW YORK		
									STOCK SIZE		ENGRAVING, RIGHT SUPPORT		
SYM	DESCRIPTION	DATE	CH. NO.	DRAFTS	CHECKER	ENG. APP.		MATERIAL					
UNLESS OTHERWISE SPECIFIED DIMENSIONS ARE IN INCHES AND INCLUDE CHEMICALLY APPLIED OR PLATED FINISHES		SCALE		FULL							<i>[Signature]</i>	<i>[Signature]</i>	<i>[Signature]</i>
							TYPE & TEMPER	HEAT TREAT. SPEC.	DRAWN	CHECKED	FINAL APPROVAL		
DECIMALS .X ± .05 .XX ± .01 .XXX ± .005	TOLERANCES	FRACTIONS ± 1/64 ANGLES ± 0° 30'	CODE							<i>[Signature]</i>	<i>[Signature]</i>	LD-1178	
							FINISH & SPEC. NO.		ELE. DES. APP.	MECH. DES. APP.			

THE CONTENTS OF THIS DRAWING ARE THE EXCLUSIVE PROPERTY OF THE TECHNICAL MATERIEL CORP. ITS UNAUTHORIZED USE FOR REPRODUCTION IN WHOLE OR IN PART IS STRICTLY FORBIDDEN.

REQ. PER UNIT

1

LSP-11

USED ON

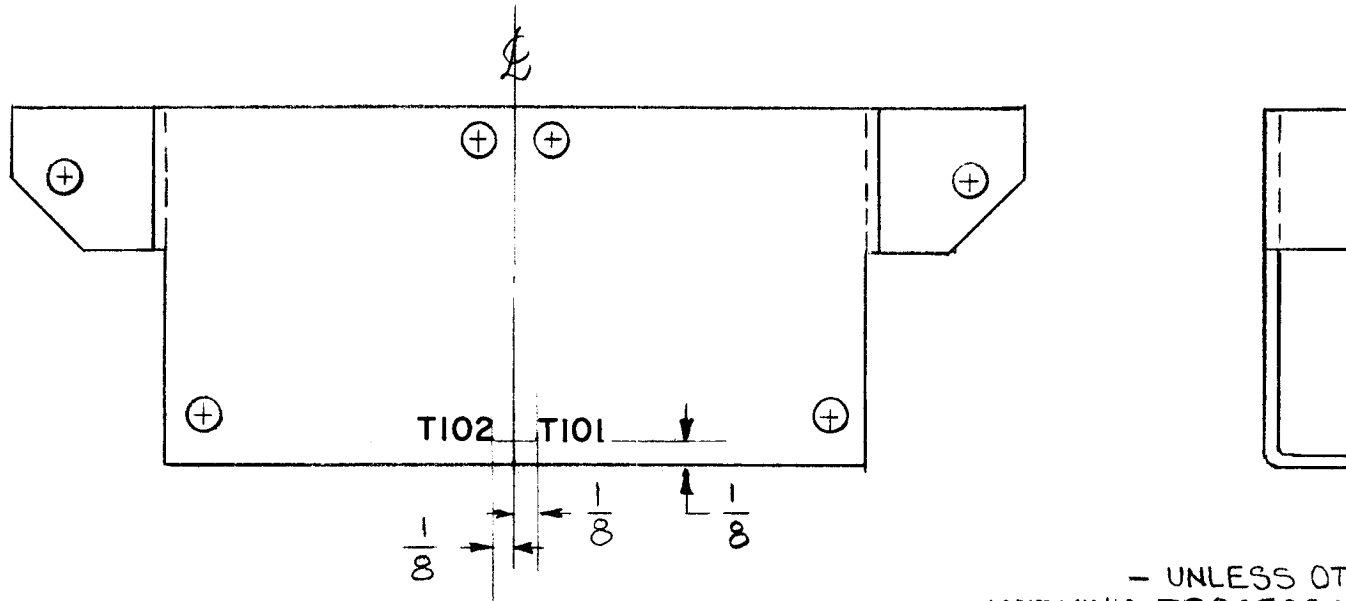
MODEL

ASS'Y. NO.

DATE

2-23-63

LD-1184



- UNLESS OTHERWISE SPECIFIED -
 MARKING PROCESS: AS PER TMC SPECIFICATION S-727
 LETTERING: 1/8 HIGH, BLACK GOTHIC

REF: MS-3087

							REQ.	ITEM	PART NO.	STRUMER	DESCRIPTION	SYMBOL	
											THE TECHNICAL MATERIEL CORP. MAMARONECK, NEW YORK		
											LETTERING, MOUNTING		
											BRACKET		
SYM	DESCRIPTION	DATE	CH. NO.	DRAFTS	CHECKER	ENG. APP.	MATERIAL			G.D.L.	ADD 3/7/63	BP	
UNLESS OTHERWISE SPECIFIED DIMENSIONS ARE IN INCHES AND INCLUDE CHEMICALLY APPLIED OR PLATED FINISHES		SCALE					TYPE & TEMPER		HEAT TREAT. SPEC.	DRAWN	CHECKED	FINAL APPROVAL	
DECIMALS .X ± .05 .XX ± .01 .XXX ± .005	TOLERANCES	FRACTIONS ± 1/64 ANGLES ± 0° 30'	CODE						JMA	JD	LD-1184		
							FINISH & SPEC. NO.			ELEC. DES. APP.	MECH. DES. APP.		