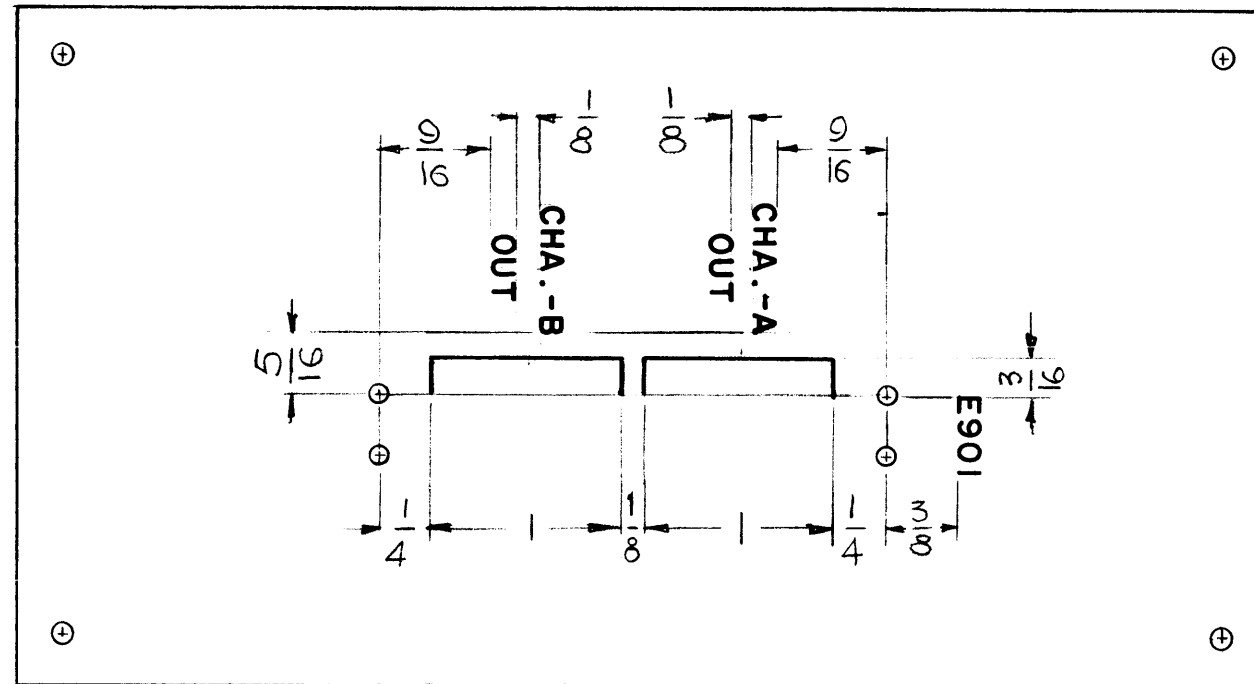


THE CONTENTS OF THIS DRAWING ARE THE EXCLUSIVE PROPERTY OF THE TECHNICAL MATERIEL CORP. ITS UNAUTHORIZED USE OR REPRODUCTION IN WHOLE OR IN PART IS STRICTLY FORBIDDEN.

LD-1195

- UNLESS OTHERWISE SPECIFIED -
 MARKING PROCESS: AS PER TMC SPECIFICATION S-727
 LETTERING: 1/8 HIGH, WHITE GOTHIC LINES
 LINES : WIDTH .015, WHITE



REF: PX-705

REQ.	ITEM	PART NO.	STRUMER DESCRIPTION	SYMBOL
			THE TECHNICAL MATERIEL CORP. MAMARONECK, NEW YORK	
			LETTERING BARRIER STRIP MTG BLK	
			G.D.L. <i>JA</i> 3/1/63	<i>13P</i>
			DRAWN <i>AMA</i> 3/1/63	CHECKED
			ELEC. DES. APP.	MECH. DES. APP.
				LD-1195

SYM	DESCRIPTION	DATE	CH. NO.	DRAFTS	CHECKER	ENG. APP.
	UNLESS OTHERWISE SPECIFIED: DIMENSIONS ARE IN INCHES TOLERANCES ON FRACTIONS $\pm 1/64$ DECIMALS $\pm .005$ ANGLES $\pm 1/2^\circ$					
	SCALE: MAXIMUM ALLOWABLE TOLERANCES HAVE BEEN DETERMINED AND ANY DEVIATIONS WILL BE CAUSE FOR REJECTION. REMOVE ALL BURRS AND SHARP EDGES					
		1	RAK-30A			3-1-63
		REQ. PER UNIT	MODEL	SECTION	ASS'Y. NO.	DATE
			USED ON			