

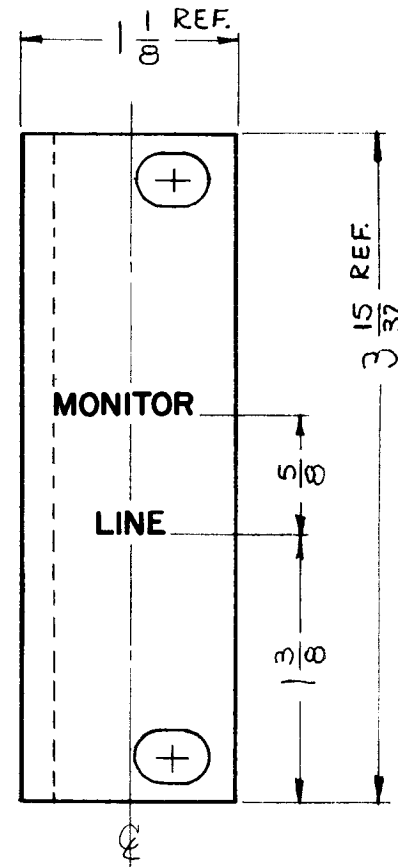
THE CONTENTS OF THIS DRAWING ARE THE EXCLUSIVE PROPERTY OF THE TECHNICAL MATERIEL CORP. ITS UNAUTHORIZED USE FOR REPRODUCTION IN WHOLE OR IN PART IS STRICTLY FORBIDDEN.

REQ. PER UNIT	USED ON		
	MODEL	ASS'Y. NO.	DATE
1	LPP-3		12-21-62

LD-1178

~UNLESS OTHERWISE SPECIFIED~
 1~ALL LETTERING TO BE 1/8 HIGH GOTHIC, WHITE FILLED.
 2~ALL LETTER GROUPS TO BE CENTERED ON CENTER LINE.

HEIGHT OF LETTERS	DEPTH OF STROKE	WIDTH OF STROKE
1/8	.010	.020



REF: MS-361 (1)

								REQ. ITEM	PART NO.	STUEHER	DESCRIPTION	SYMBOL
											THE TECHNICAL MATERIEL CORP. MAMARONECK, NEW YORK	
									STOCK SIZE		ENGRAVING, RIGHT SUPPORT	
SYM	DESCRIPTION	DATE	CH. NO.	DRAFTS	CHECKER	ENG. APP.		MATERIAL				
	UNLESS OTHERWISE SPECIFIED DIMENSIONS ARE IN INCHES AND INCLUDE CHEMICALLY APPLIED OR PLATED FINISHES									<i>[Signature]</i>	<i>[Signature]</i>	<i>[Signature]</i>
		SCALE	FULL					TYPE & TEMPER	HEAT TREAT. SPEC.	DRAWN	CHECKED	FINAL APPROVAL
DECIMALS .X ± .05 .XX ± .01 .XXX ± .005	TOLERANCES	FRACTIONS ± 1/64 ANGLES ± 0° 30'	CODE							<i>[Signature]</i>	<i>[Signature]</i>	LD-1178
							FINISH & SPEC. NO.			ELE. DES. APP.	MECH. DES. APP.	