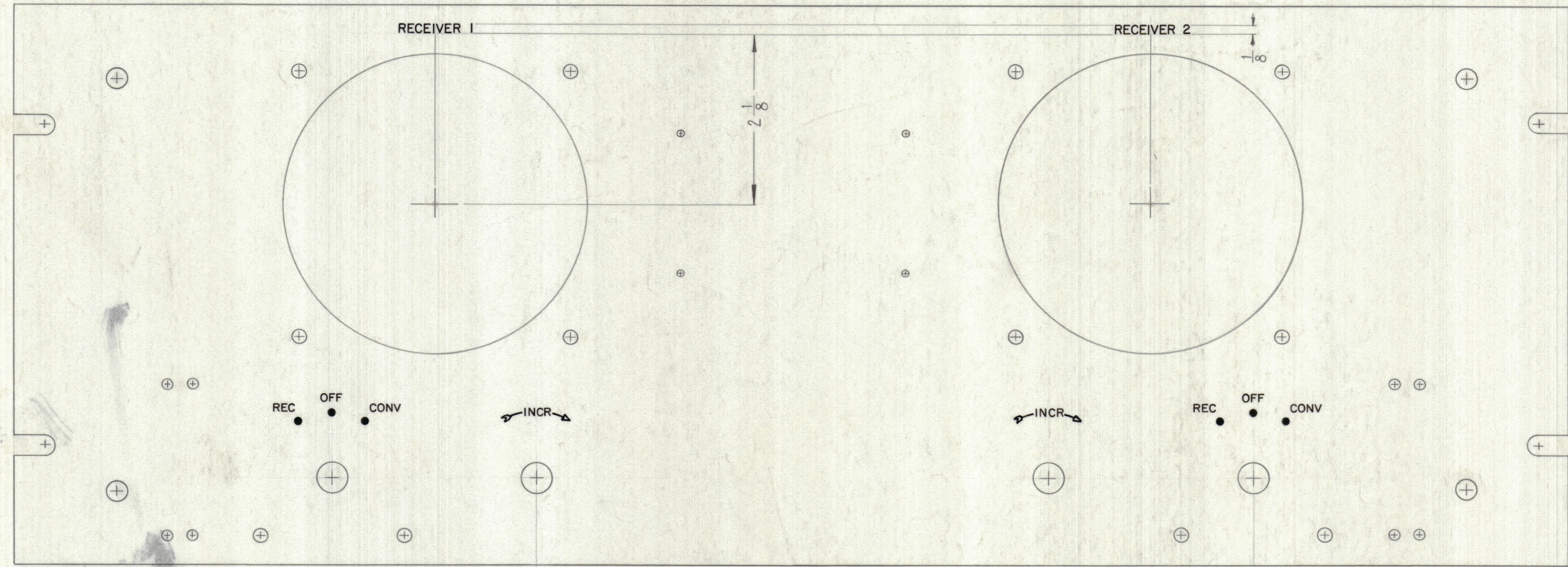
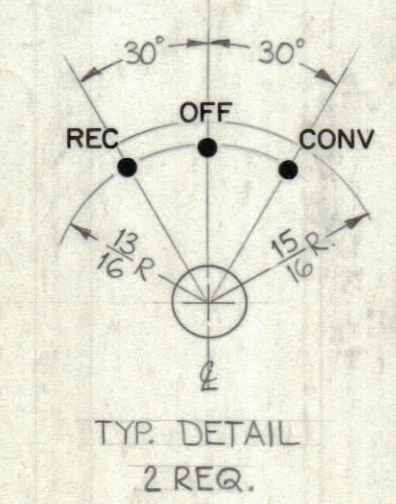
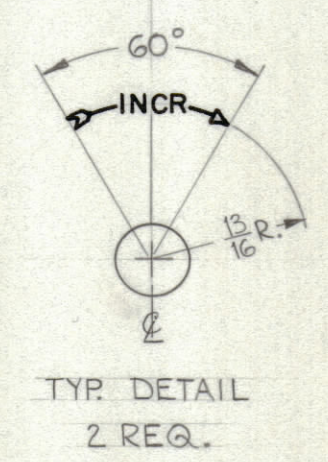


REVISIONS							
ZONE	SYM	DESCRIPTION	DATE	E.M.N. NO.	DRAFT	CHKD	APPD



~UNLESS OTHERWISE SPECIFIED~
 1~ALL ENGRAVING TO BE 3/32 HIGH WHITE FILLED GOTHIC.
 2~ALL LINES TO BE WHITE FILLED.
 3~ALL DOTS TO BE WHITE FILLED.
 4~ALL ARROWHEADS AND TAILS TO BE WHITE OUTLINE FILL.

HEIGHT OF LETTERS	DEPTH OF STROKE	WIDTH OF STROKE
3/32	.010	.015
1/8	.010	.020
DOTS	.010	1/16 DIA.
LINES	.010	.015
ARROWHEADS & TAILS	.010	



NOTICE TO PERSONS RECEIVING THIS DRAWING
 THE TECHNICAL MATERIEL CORPORATION claims proprietary right in the material disclosed hereon. This drawing is issued in confidence for engineering information only and may not be reproduced or used to manufacture anything shown hereon without permission from THE TECHNICAL MATERIEL CORPORATION to the user. This drawing is loaned for mutual assistance and is subject to recall at any time.
 Property of:
 THE TECHNICAL MATERIEL CORPORATION
 MAMARONECK, NEW YORK

REF: MS-3010 (8).

REQ'D.	ITEM	PART NUMBER	DESCRIPTION	SYMBOL

S. De Marco

LIST OF MATERIAL	
MATERIAL	THE TECHNICAL MATERIEL CORP. MAMARONECK, NEW YORK
FINISH	TITLE ENGRAVING, FRONT PANEL

QTY./UNIT	MODEL USED ON	ASBY. NO.
1	1 sp. 9	

SCALE	CODE	DATE	FINAL APPROVAL	DATE

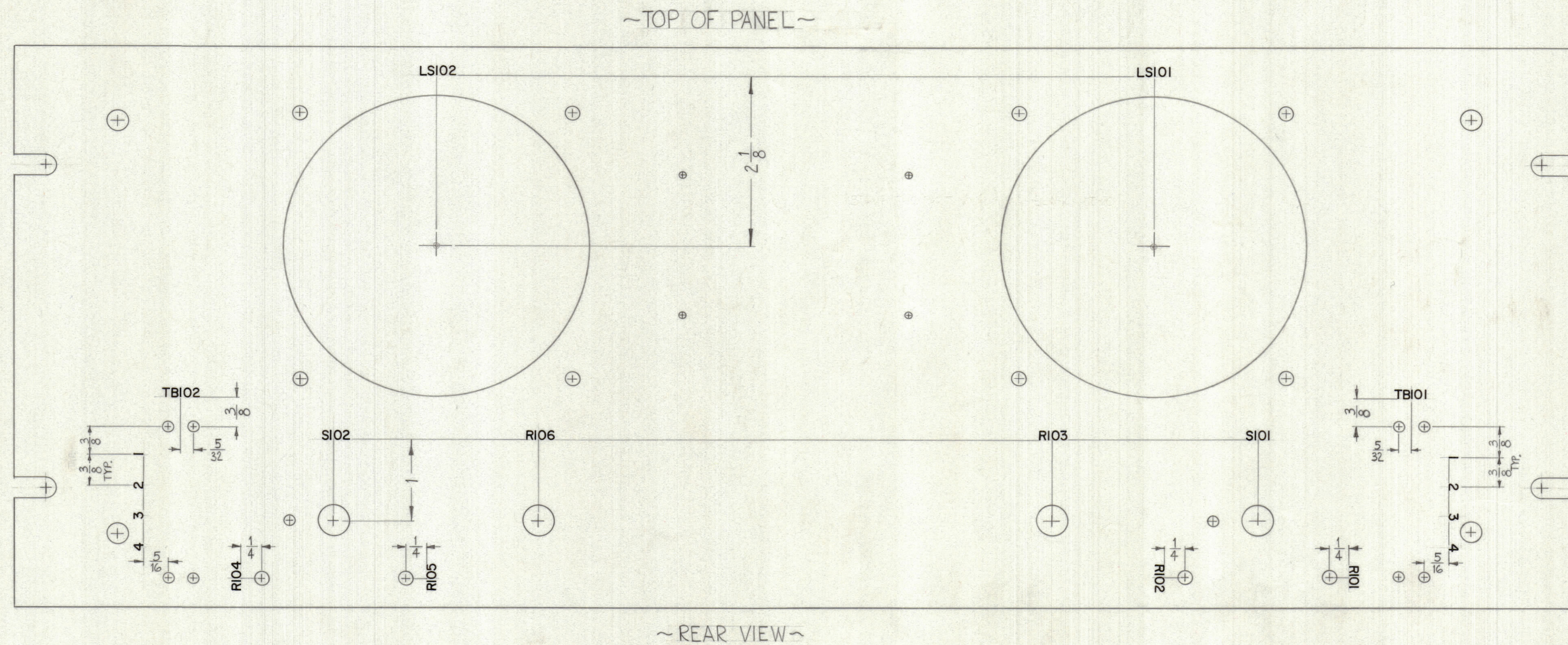
DECIMALS	FRACTIONS	ANGLES	ELECT. DES.	DATE	MECH. DES.	DATE	SHEET	REV. LTR.
± .05	± 1/64	± 0° 30'		8-15-62		8-17-62	LD-1141	
± .01								
± .005								

NOTES

THE CONTENTS OF THIS DRAWING ARE THE EXCLUSIVE PROPERTY OF THE TECHNICAL MATERIEL CORP. ITS UNAUTHORIZED USE OR REPRODUCTION IN WHOLE OR IN PART IS STRICTLY FORBIDDEN.

LD-1141

REVISIONS				
ZONE	SYM	DESCRIPTION	DATE	E.M.N. NO.



~UNLESS OTHERWISE SPECIFIED~
 1/8 HIGH BLACK LUSTERLESS GOTHIC LETTERING
 MARKING PROCESS: AS PER T.M.C SPECIFICATION S-727.
 ALL LETTER GROUPS TO BE CENTERED ON HOLES
 OR INDICATING LINES.

NOTICE TO PERSONS RECEIVING THIS DRAWING
 THE TECHNICAL MATERIEL CORPORATION claims
 proprietary right in the material disclosed herein.
 This drawing is issued in confidence for engineering
 information only and may not be reproduced or used
 to manufacture anything shown hereon without per-
 mission from THE TECHNICAL MATERIEL CORPORA-
 TION to the user. This drawing is loaned for mutual
 assistance and is subject to recall at any time.
 Property of:
 THE TECHNICAL MATERIEL CORPORATION
 MAMARONECK, NEW YORK

REF: MS-3010 (8)

REQ'D.	ITEM	PART NUMBER	DESCRIPTION	SYMBOL
		S. De Marco	LIST OF MATERIAL	
MATERIAL		THE TECHNICAL MATERIEL CORP. MAMARONECK, NEW YORK		
FINISH		TITLE LETTERING, REAR PANEL (LSP-9)		
SCALE	MODEL USED ON	DATE	FINAL APPROVAL	DATE
	LSP-9	5-17-62	BP	
UNLESS OTHERWISE SPECIFIED DIMENSIONS ARE IN INCHES AND INCLUDE CHEMICALLY APPLIED OR PLATED FINISHES		DRAWN W.A. Franco	DATE 5-17-62	
TOLERANCES		CHECKED S.D.	DATE 5-17-62	
DECIMALS ± .05		ELECT. DES. S.D.	DATE 5-17-62	
FRACTIONS ± 1/64		MECH. DES. S.D.	DATE 5-17-62	
ANGLES ± 0° 30'		SHEET 2 OF 2		

NOTES

THE CONTENTS OF THIS DRAWING ARE THE EXCLUSIVE PROPERTY
 OF THE TECHNICAL MATERIEL CORP. ITS UNAUTHORIZED USE OR
 REPRODUCTION IN WHOLE OR IN PART IS STRICTLY FORBIDDEN.