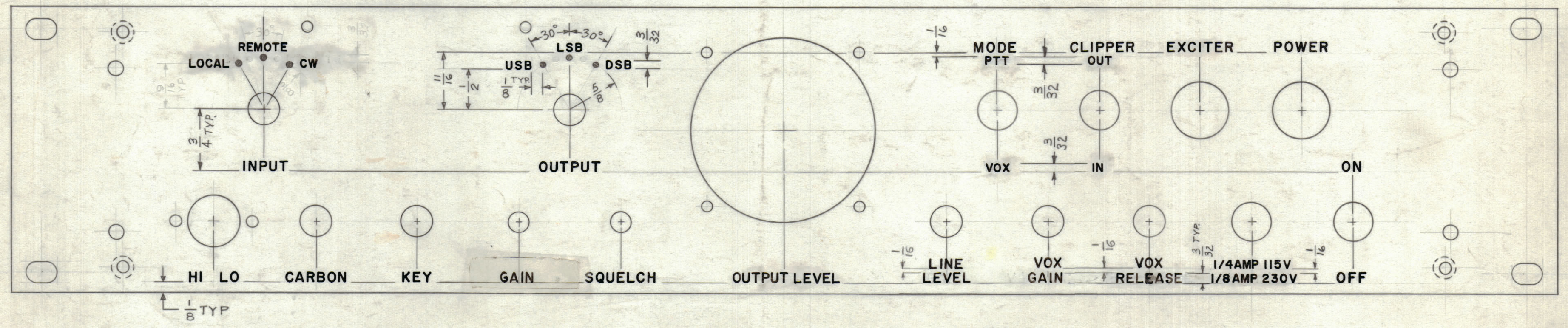
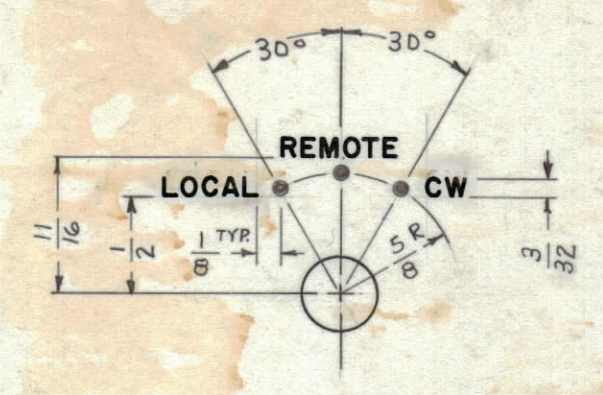


NOTICE TO PERSONS RECEIVING THIS DRAWING
 THE TECHNICAL MATERIEL CORPORATION claims proprietary right in the material disclosed hereon. This drawing is issued in confidence for engineering information only and may not be reproduced or used to manufacture anything shown hereon without permission from THE TECHNICAL MATERIEL CORPORATION to the user. This drawing is loaned for mutual assistance and is subject to recall at any time.

Property of:
 THE TECHNICAL MATERIEL CORPORATION
 MAMARONECK, NEW YORK

REVISIONS						
ZONE	SYM	DESCRIPTION	DATE	E.M.N. NO.	DRAFT	CHKD
—	A	SEE SHEET 2 OF 2 REVISION "A"	2-8-63	8189		



NOTES: UNLESS OTHERWISE SPECIFIED ALL LETTERING 1/8" HIGH GO. DOTS TO BE .015 DIA. DEEP AND 3/16" DIAMETER.

LETTER HEIGHT	DEPTH OF STROKE	WIDTH OF STROKE
3/32	.010	.015
1/8	.010	.020
DOTS	.010	SEE NOTE#2

UNLESS OTHERWISE SPECIFIED —
 1- ALL ENGRAVING TO BE 1/8 HIGH WHITE GOTHIC, UNLESS OTHERWISE SPECIFIED.
 2- ALL DOTS TO BE 3/32 DIA., WHITE FILLED.
 3- ALL ENGRAVING TO BE CENTERED ON HOLES.

DEF-TMC DWG MS-3003

REQ'D.	ITEM	PART NUMBER	DESCRIPTION	SYMBOL
STRUMMER LIST OF MATERIAL				
MATERIAL		THE TECHNICAL MATERIEL CORP. MAMARONECK, NEW YORK		
FINISH		TITLE PANEL, FRONT ENGRAVING SPU-2		
UNLESS OTHERWISE SPECIFIED DIMENSIONS ARE IN INCHES AND INCLUDE CHEMICALLY APPLIED OR PLATED FINISHES		DRAWN M TANTILLO CHECKED Judo DATE 7-19-62 DATE 10/16/62	FINAL APPROVAL DATE 11-27-62 DATE 11-27-62	DATE 11-27-62
DECIMALS .X ± .05 .XX ± .01 .XXX ± .005		FRACTIONS ± 1/64 ANGLES ± 0° 30'	ELECT. DES. MECH. DES.	SHEET 1 of 2 REV. LTR.

NOTES

LD-1135 A