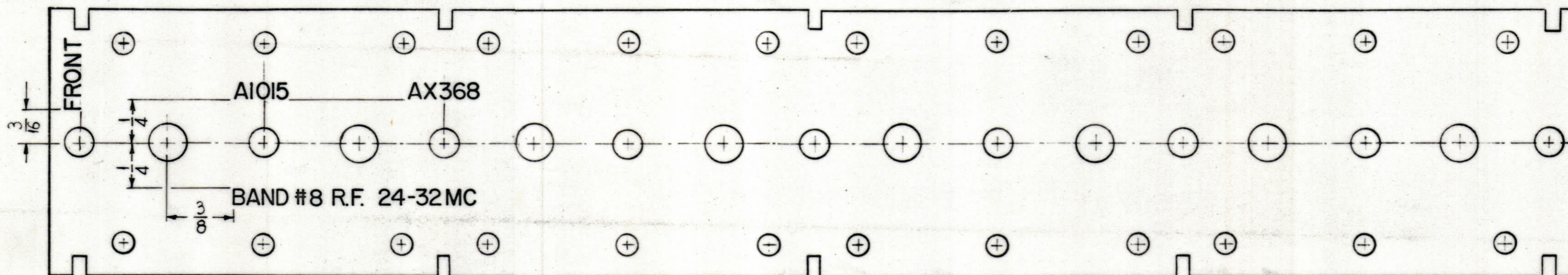


NOTICE TO PERSONS RECEIVING THIS DRAWING

THE TECHNICAL MATERIEL CORPORATION claims proprietary right in the material disclosed hereon. This drawing is issued in confidence for engineering information only and may not be reproduced or used to manufacture any item shown hereon without permission from THE TECHNICAL MATERIEL CORPORATION to the user. This drawing is loaned for mutual assistance and is subject to recall at any time.

Property of:
THE TECHNICAL MATERIEL CORPORATION
 MAMARONECK, NEW YORK

REVISIONS				
ZONE	SYM	DESCRIPTION	DATE	E.M.N. NO.



- ~ UNLESS OTHERWISE SPECIFIED ~
- 1 - 3/32 HIGH BLACK LUSTERLESS GOTHIC LETTERING.
 - MARKING PROCESS: AS PER TMC SPECIFICATION S-727
 - 2 - LETTER GROUPS TO BE CENTERED ON HOLES.

LD-1128

REF. ~ PX-649(2)

REQ'D.	ITEM	PART NUMBER	DESCRIPTION	SYMBOL
ANGER				
LIST OF MATERIAL				
MATERIAL			THE TECHNICAL MATERIEL CORP. MAMARONECK, NEW YORK	
FINISH			TITLE LETTERING, R.F. TERMINAL BOARD BAND # 8	
UNLESS OTHERWISE SPECIFIED DIMENSIONS ARE IN INCHES AND INCLUDE CHEMICALLY APPLIED OR PLATED FINISHES			DRAWN: <i>D. J. Mum</i> CHECKED: <i>H. G.</i> DATE: 6/18/62 DATE: 6/20/62	FINAL APPROVAL: <i>[Signature]</i> DATE: 6/20/62 LD-1128
DECIMALS X ± .05 XX ± .01 XXX ± .005			ELECT. DES. <i>J. ANGER</i> MECH. DES.	SHEET REV. LTB.

QTY./UNIT	MODEL USED ON	ASSY. NO.
SCALE	CODE	(8) A-2378
THE CONTENTS OF THIS DRAWING ARE THE EXCLUSIVE PROPERTY OF THE TECHNICAL MATERIEL CORP. ITS UNAUTHORIZED USE OR REPRODUCTION IN WHOLE OR IN PART IS STRICTLY FORBIDDEN.		

NOTES