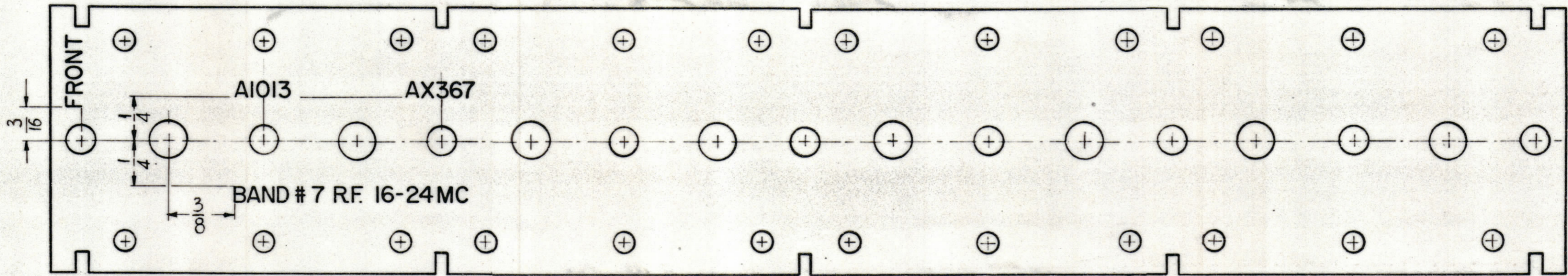


REVISIONS							
ZONE	SYM	DESCRIPTION	DATE	E.M.N. NO.	DRAFT	CHKD	APPD

**NOTICE TO PERSONS RECEIVING THIS DRAWING**

THE TECHNICAL MATERIEL CORPORATION claims proprietary right in the material disclosed hereon. This drawing is issued in confidence for engineering information only and may not be reproduced or used to manufacture any other drawing without permission from THE TECHNICAL MATERIEL CORPORATION to the user. This drawing is loaned for mutual assistance and is subject to recall at any time.

Property of:  
**THE TECHNICAL MATERIEL CORPORATION**  
 MAMARONECK, NEW YORK



- ~UNLESS OTHERWISE SPECIFIED~
- 1 - 3/32 HIGH BLACK LUSTERLESS, GOTHIC LETTERING.  
 MARKING PROCESS, AS PER TMC SPECIFICATION S-727
  - 2 - LETTER GROUPS TO BE CENTERED ON HOLES.

LD-1127

REF. ~PX-649(2)

REQ'D.	ITEM	PART NUMBER	DESCRIPTION	SYMBOL
<b>ANGER LIST OF MATERIAL</b>				
MATERIAL		THE TECHNICAL MATERIEL CORP. MAMARONECK, NEW YORK		
FINISH		TITLE LETTERING, R.F. TERMINAL BOARD BAND # 7		
UNLESS OTHERWISE SPECIFIED DIMENSIONS ARE IN INCHES AND INCLUDE CHEMICALLY APPLIED OR PLATED FINISHES		DRAWN <i>D. Man</i>	DATE 5-18-62	FINAL APPROVAL <i>[Signature]</i>
DECIMALS X ± .05 XX ± .01 XXX ± .008		CHECKED <i>[Signature]</i>	DATE 6/20/62	
TOLERANCES ± 1/64 ANGLES ± 0° 30'		ELECT. DES. <i>J. ANGER</i>	DATE 6/20/62	
		MECH. DES.	DATE	
			SHEET	LD-1127
				REV. LTR.

**NOTES**

Q'TY./UNIT	MODEL USED ON	ASSY. NO.
DOUBLE	CODE (8) A-2377	

THE CONTENTS OF THIS DRAWING ARE THE EXCLUSIVE PROPERTY OF THE TECHNICAL MATERIEL CORP. ITS UNAUTHORIZED USE OR REPRODUCTION IN WHOLE OR IN PART IS STRICTLY FORBIDDEN.