

THE CONTENTS OF THIS DRAWING ARE THE EXCLUSIVE PROPERTY OF THE TECHNICAL MATERIEL CORP. ITS UNAUTHORIZED USE OR REPRODUCTION IN WHOLE OR IN PART IS STRICTLY FORBIDDEN.

REQ. PER UNIT	USED ON			LD-1107	A
	MODEL	ASS'Y. NO.	DATE		
1	HFS-1	3500	8-17-62		

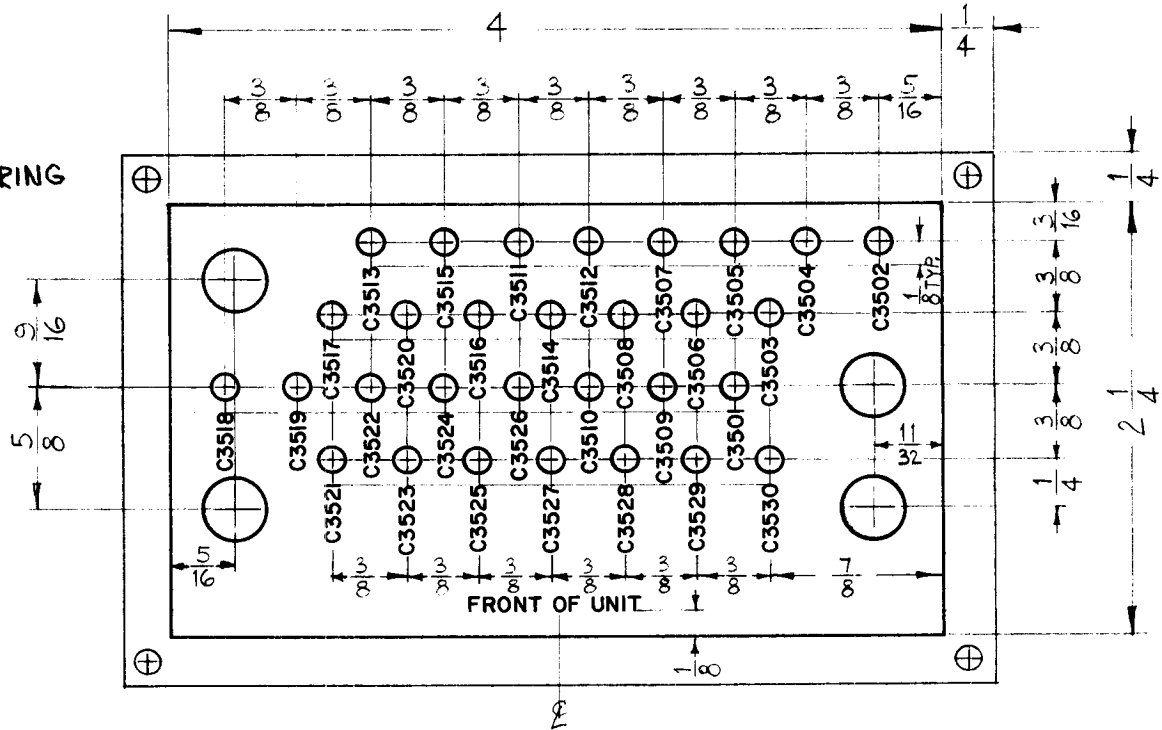
~ UNLESS OTHERWISE SPECIFIED ~
 1/16 HIGH BLACK LUSTERLESS, GOTHIC LETTERING
 MARKING PROCESS: AS PER TMC SPECIFICATION S-727.

ALL LETTERING TO BE CENTERED ON CIRCLE LETTERING.

ALL LINES TO BE SAME WIDTH AS LETTERING

○ SMALL CIRCLE SHALL BE 1/8 DIA.
 (30 REQ)

○ LARGE CIRCLE SHALL BE 5/16 DIA.
 (4 REQ)



REF: MS-2995 (1).

								REQ.	ITEM	PART NO.	J. STRUMER	DESCRIPTION	SYMBOL	
											THE TECHNICAL MATERIEL CORP.			
											MAMARONECK, NEW YORK			
											LETTERING, PLATE, CAPACITOR DESIGNATION			
											(3500 DECK)			
A	ADDED CIRCLE NOTES LETTERING WAS CENTERED ON HOLES	3-18-63	8545	RC	<i>[Signature]</i>	<i>[Signature]</i>								
SYM	DESCRIPTION	DATE	CH. NO.	DRAFTS	CHECKER	ENG. APP.								
UNLESS OTHERWISE SPECIFIED: DIMENSIONS ARE IN INCHES TOLERANCES ON FRAC. ± 1/64 DEC. ± .005 ANGLES ± 1/2°		SCALE: MAXIMUM ALLOWABLE TOLERANCES HAVE BEEN DETERMINED AND ANY DEVIATIONS WILL BE CAUSE FOR REJECTION. REMOVE ALL BURRS AND SHARP ED ES												
							TYPE & TEMPER	HEATTREAT. SPEC.	DRAWN	CHECKED	FINAL APPROVAL			
									<i>[Signature]</i>	<i>[Signature]</i>	LD-1107	A		
							FINISH & SPEC. NO.		LEC. DES. APP.	MECH. DES. APP.				