

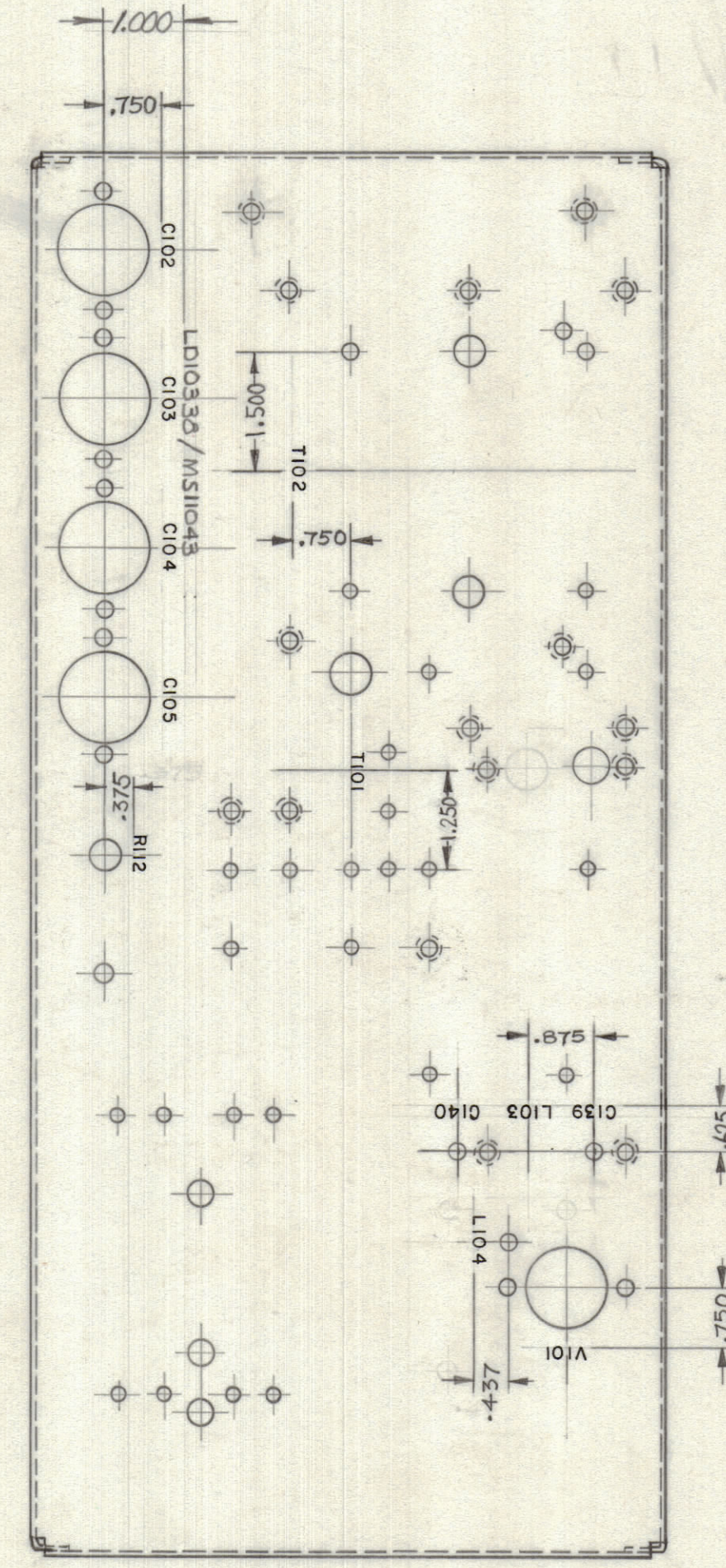
IF IT IS FOUND DESIRABLE TO CHANGE ANY TOLERANCE OR OTHER DETAIL SPECIFIED ON THIS DRAWING NOTIFY THE PURCHASER PROMPTLY.

MAXIMUM ALLOWABLE TOLERANCES HAVE BEEN DETERMINED AND DEVIATIONS WILL BE CAUSE FOR REJECTION. REMOVE ALL BURRS AND SHARP EDGES.

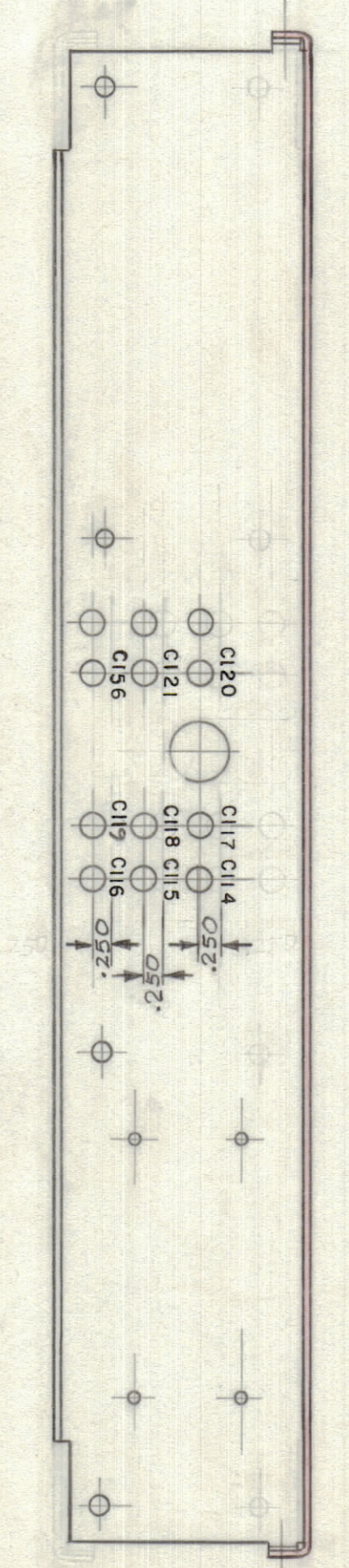
DIMENSIONS IN INCHES UNLESS OTHERWISE SPECIFIED

ISSUE	ITEM	CHANGED FROM	DATE	CH. NO.	DRAFTS	CHECKER	ENG. APP.
Ø		REL. TO PROD.	Aug 26, 69		Y.M.		
A		REVISED AS PER COMMENT	2/69	569	PV		

MARKING PROCESS: AS PER TMC SPECIFICATION S-727.
 LETTERING: 1/8 HIGH BLACK GOTHIC, LOCATED AS SHOWN.

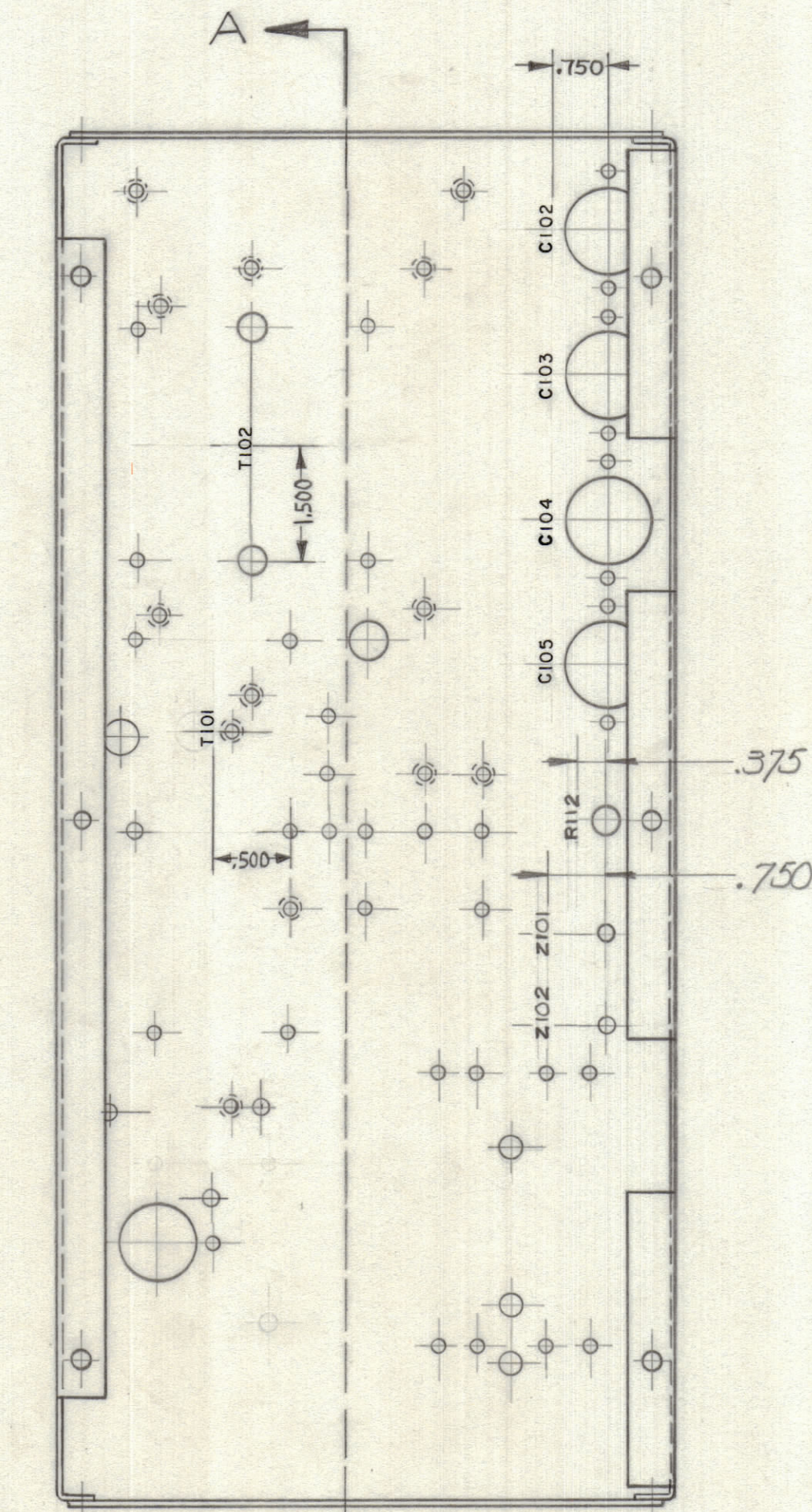


TOP SIDE VIEW OF CHASSIS (RIGHT)



SECTION A-A

FRONT SIDE



UNDER SIDE VIEW OF CHASSIS

TOLERANCES	SCALE: 1:2
ALL OTHERS	DEC. DIM ± .005 FRACTIONAL DIM ± .010 ANGULAR DIM ± .5°
	DRILL, PUNCH, COMMERCIAL STOCK SIZES AND MANUFACTURERS TOLERANCES ARE NOT INCLUDED.

REF. MS11043

STOCK SIZE		TMC (Canada) LIMITED OTTAWA ONTARIO	
MATERIAL		LETTERING OF CHASSIS (RIGHT)	
TYPE & TEMPER		Y. MORI	
HEAT TREAT. SPEC.		DRAWN	ELEC. DES. APP. MECH. DES. APP.
FINISH & SPEC. NO.		CHECKED	FINAL APPROVAL
		LD 10338 A	

MTR	087/69	Aug. 27, 69
MODEL	PROJECT NO.	DATE
USED ON		