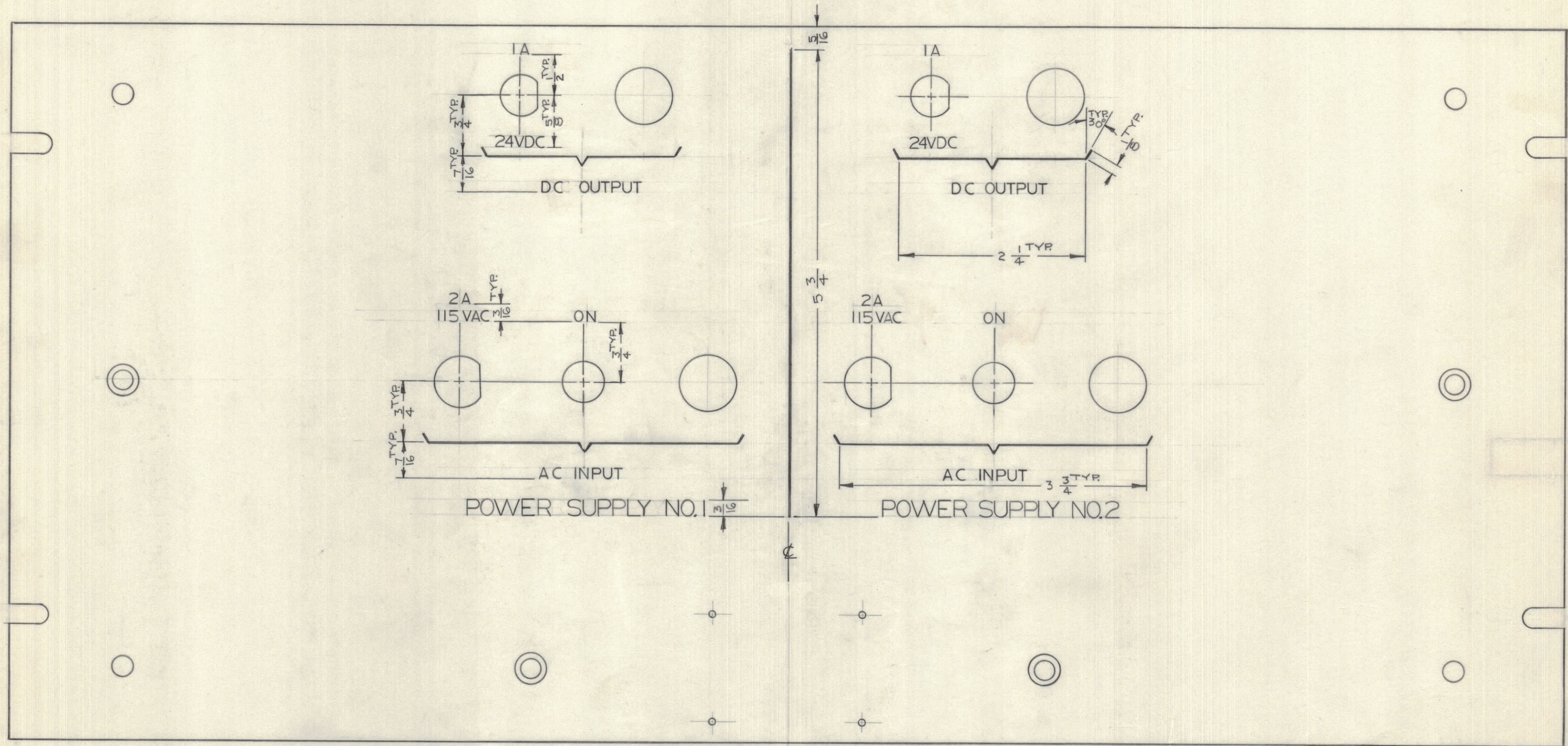


IF IT IS FOUND DESIRABLE TO CHANGE ANY TOLERANCE OR OTHER DETAIL SPECIFIED ON THIS DRAWING NOTIFY THE PURCHASER PROMPTLY.		DIMENSIONS IN INCHES UNLESS OTHERWISE SPECIFIED					
MAXIMUM ALLOWABLE TOLERANCES HAVE BEEN DETERMINED AND DEVIATIONS WILL BE CAUSE FOR REJECTION. REMOVE ALL BURRS AND SHARP EDGES.							
ISSUE	ITEM	CHANGED FROM	DATE	CN. NO.	DRAFTS	CHECKER	ENG. APP.
Ø		REL TO PROD	JUNE 24/66		GM		
A		REV PER CEMN	16-8-66	066	RD		

REQ.	ITEM	PART NO.	DESCRIPTION	SYMBOL
------	------	----------	-------------	--------



LETTERING: PER 5566

HEIGHT OF LETTERS	DEPTH OF STROKE	WIDTH OF STROKE
1/8	.020	.020
3/16	.020	.025
LINES	.020	.020

LETTERING: 1/8 HIGH WHITE GOTHIC, LOCATED AS SHOWN. UNLESS OTHERWISE SPECIFIED

FINISH NOTES: AFTER ENGRAVING

S114 - ZINC CHROMATE PRIMER) FRONT AND
S115 - SMOOTH GRAY ENAMEL) EDGES ONLY

REF: MS10714

STOCK SIZE		TMC (Canada) LIMITED OTTAWA ONTARIO	
MATERIAL		ENGRAVING DETAIL, FRONT of PANEL	
WEIGHT PER PC.		GAM	
TYPE & TEMPER		DRAWN	ELEC. DES. APP. MECH. DES. APP.
HEAT TREAT. SPEC.		CHECKED	FINAL APPROVAL
SEE NOTE		SHT. 1 OF 2	
FINISH & SPEC. NO.		LD10229 A	

AX10025	050/66		JUNE 24/66
MODEL	PROJECT NO.	ASSY. NO.	DATE

TOLERANCES		SCALE: 1:1
ALL OTHERS	DEC. DIM. ± FRAC. DIM. ± ANGULAR DIM. ±	DRILL, PUNCH, COMMERCIAL STOCK SIZES AND MANUFACTURERS TOLERANCES ARE NOT INCLUDED.