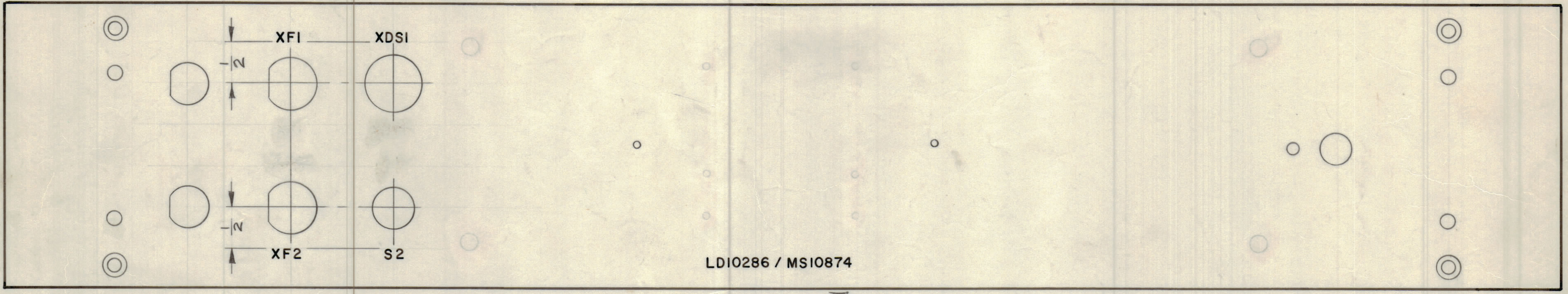


IF IT IS FOUND DESIRABLE TO CHANGE ANY TOLERANCE OR OTHER DETAIL SPECIFIED ON THIS DRAWING NOTIFY THE PURCHASER PROMPTLY.		DIMENSIONS IN INCHES UNLESS OTHERWISE SPECIFIED					
MAXIMUM ALLOWABLE TOLERANCES HAVE BEEN DETERMINED AND DEVIATIONS WILL BE CAUSE FOR REJECTION. REMOVE ALL BURRS AND SHARP EDGES.							
ISSUE	ITEM	CHANGED FROM	DATE	CN. NO.	DRAFTS	CHECKER	ENG. APP.
Ø		REL TO PROD	APRIL 11/68		AP		
A		REV. AS PER CEMN	APRIL 11/68	356	RPL		
B		REV. NP HOLES	8-1-78	21666	WJB		
C		MARKING WAS WHITE	FO-23-90		CBL		

REQ.	ITEM	PART NO.	DESCRIPTION	SYMBOL
------	------	----------	-------------	--------

MARKING PROCESS: AS PER TMC SPECIFICATION S-727.
 LETTERING: 1/8 HIGH BLACK GOTHIC, LOCATED AS SHOWN
 IN REAR VIEW

FINISH NOTES: AFTER ENGRAVING AND SCREENING
 (1) S114 - ZINC CHROMATE PRIMER } FRONT AND
 (2) S115 - SMOOTH GRAY ENAMEL } EDGES ONLY

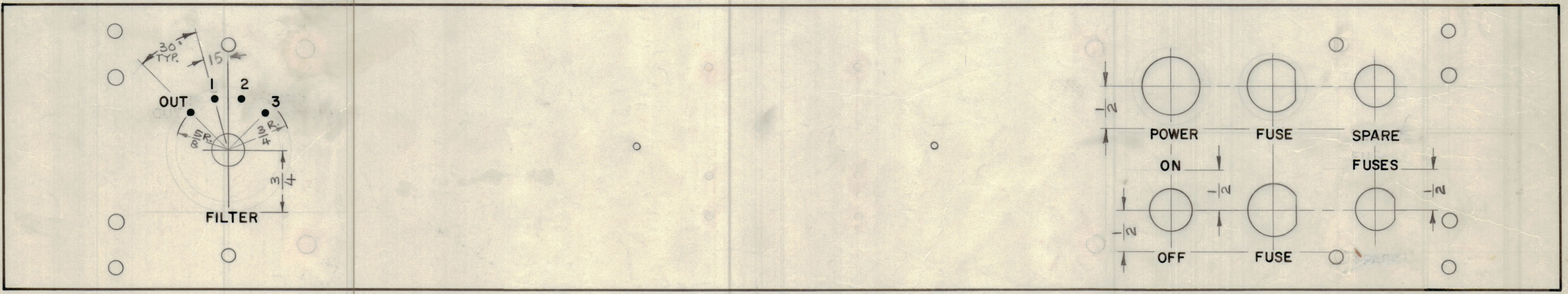


LD10286 / MS10874

SILK SCREENING REAR VIEW

TMC PART NO.

LD10286 C



REF. TMC SPEC. S 566

WIDTH OF STROKE	DEPTH OF STROKE	HEIGHT OF LETTERS
.020	.020	1/8

DOTS 1/16 DIA.

DOTS AND LETTERS TO BE BLACK FILLED

ENGRAVING FRONT VIEW

REF. MS10874

TOLERANCES		SCALE
ALL OTHERS	DEC. DIM. ± .005 FRAC. DIM. ± 1/64 ANGULAR DIM. ± 0° 30'	DRILL, PUNCH, COMMERCIAL STOCK SIZES AND MANUFACTURERS TOLERANCES ARE NOT INCLUDED.

AX10047	070/68	A10692	FEB 16/68
MODEL	PROJECT NO.	ASS'Y. NO.	DATE

STOCK SIZE		TMC (Canada) LIMITED OTTAWA ONTARIO	
MATERIAL		PANEL, FRONT	
WEIGHT PER PC.		LETTERING	
TYPE & TEMPER		RPL	
HEAT TREAT. SPEC.		DRAWN	ELEC. DES. APP. MECH. DES. APP.
FINISH & SPEC. NO.		CHECKED	FINAL APPROVAL
		LD10286 C	