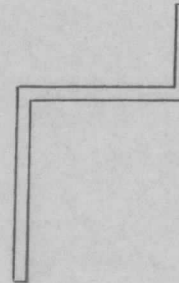
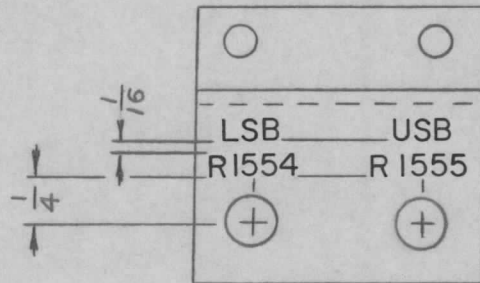


ISSUE	ITEM	CHANGED FROM	DATE	CN. NO.	DRAFTS	CHECKER	ENG. APP.	REQ.	ITEM	PART NO.	DESCRIPTION	SYMBOL
Ø		REL TO PROD	27 DEC 66		RA							



LD10241/MS10761

TMC PART NO.
C/W LATEST REV. LETTER

MARKING PROCESS: AS PER TMC SPECIFICATION S-727.
LETTERING: 1/8 HIGH BLACK GOTHIC, LOCATED AS SHOWN.

REF: MS10761

STE A-1		005/67		BMA10544		23 DEC 66		TMC (Canada) LIMITED OTTAWA ONTARIO LETTERING, BKT. POT. MTG.					
MODEL		PROJECT NO.		ASS'Y. NO.		DATE						STOCK SIZE	
USED ON								MATERIAL		WEIGHT PER PC.			
MAXIMUM ALLOWABLE TOLERANCES HAVE BEEN DETERMINED AND DEVIATIONS WILL BE CAUSE FOR REJECTION. REMOVE ALL BURRS AND SHARP EDGES				IF IT IS FOUND DESIRABLE TO CHANGE ANY TOLERANCE OR OTHER DETAIL SPECIFIED ON THIS DRAWING NOTIFY THE PURCHASER PROMPTLY.				TYPE & TEMPER					
TOLERANCES				SCALE 1:1				HEAT TREAT. SPEC.					
ALL OTHERS		DEC. DIM. ±		DIMENSIONS IN INCHES UNLESS OTHERWISE SPECIFIED		FINISH & SPEC. NO.		DRAWN		ELEC. DES. APP.		MECH. DES. APP.	
		FRAC. DIM. ±		DRILL, PUNCH, COMMERCIAL STOCK SIZES AND MANUFACTURERS TOLERANCES ARE NOT INCLUDED.				CHECKED		FINAL APPROVAL			
		ANGULAR DIM. ±						 LD10241		 Ø			