

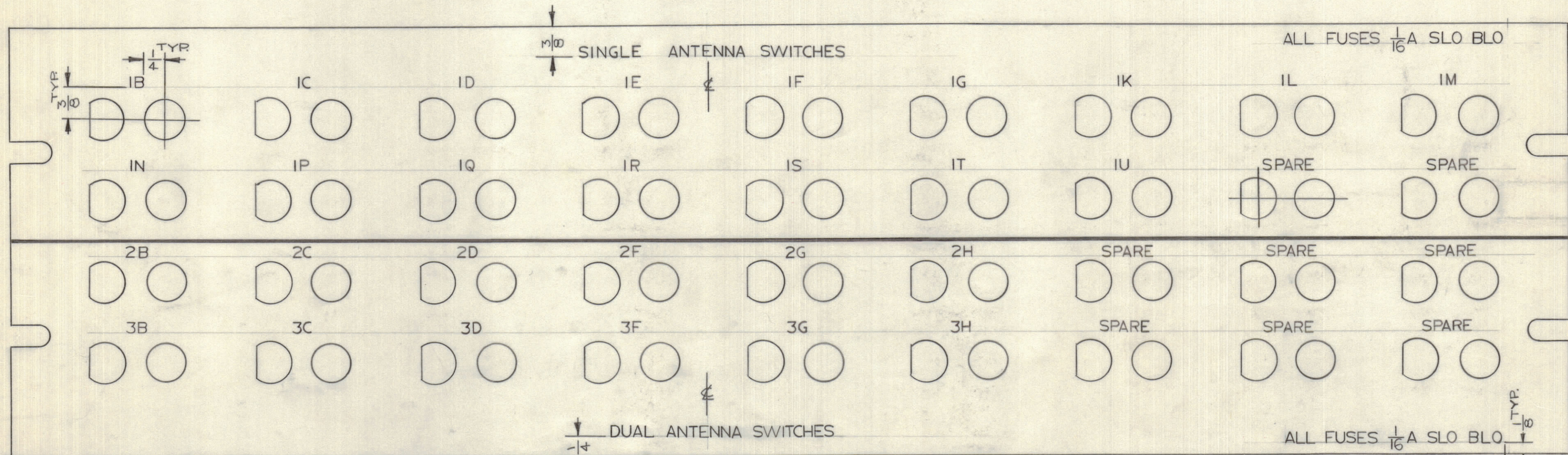
IF IT IS FOUND DESIRABLE TO CHANGE ANY TOLERANCE OR OTHER DETAIL SPECIFIED ON THIS DRAWING NOTIFY THE PURCHASER PROMPTLY.

MAXIMUM ALLOWABLE TOLERANCES HAVE BEEN DETERMINED AND DEVIATIONS WILL BE CAUSE FOR REJECTION. REMOVE ALL BURRS AND SHARP EDGES.

DIMENSIONS IN INCHES UNLESS OTHERWISE SPECIFIED

ISSUE	ITEM	CHANGED FROM	DATE	CN. NO.	DRAFTS	CHECKER	ENG. APP.
Ø		REL. TO PROD.	JUNE 29/66		GM		

REQ.	ITEM	PART NO.	DESCRIPTION	SYMBOL
------	------	----------	-------------	--------



MARKING PROCESS: AS PER TMC SPECIFICATION S-566  
 LETTERING: 1/8 HIGH WHITE GOTHIC, LOCATED AS SHOWN.

HEIGHT OF LETTERS	DEPTH OF STROKE	WIDTH OF STROKE
1/8	.020	.020
LINES	.020	.015

FINISH NOTES: (AFTER ENGRAVING)  
 S114 - ZINC CHROMATE PRIMER } FRONT AND  
 S115 - SMOOTH GRAY ENAMEL } EDGES ONLY

FRONT VIEW OF PANEL  
 FINISH NOTES (AFTER ENGRAVING)

TOLERANCES		SCALE: 1:1
ALL OTHERS	DEC. DIM. ± FRAC. DIM. ± ANGULAR DIM. ±	DRILL, PUNCH, COMMERCIAL STOCK SIZES AND MANUFACTURERS TOLERANCES ARE NOT INCLUDED.

AX10029	030/66	JUNE 29/66
MODEL	PROJECT NO.	DATE
	ASS'Y. NO.	

STOCK SIZE		TMC (Canada) LIMITED OTTAWA ONTARIO	
MATERIAL		ENGRAVING DETAIL, PANEL, FRONT	
TYPE & TEMPER		GAM	
HEAT TREAT. SPEC.		DRAWN	ELEC. DES. APP.
SEE NOTE		CHECKED	FINAL APPROVAL
FINISH & SPEC. NO.		AUBREY	LD10231
		5HT 1 of 2	Ø