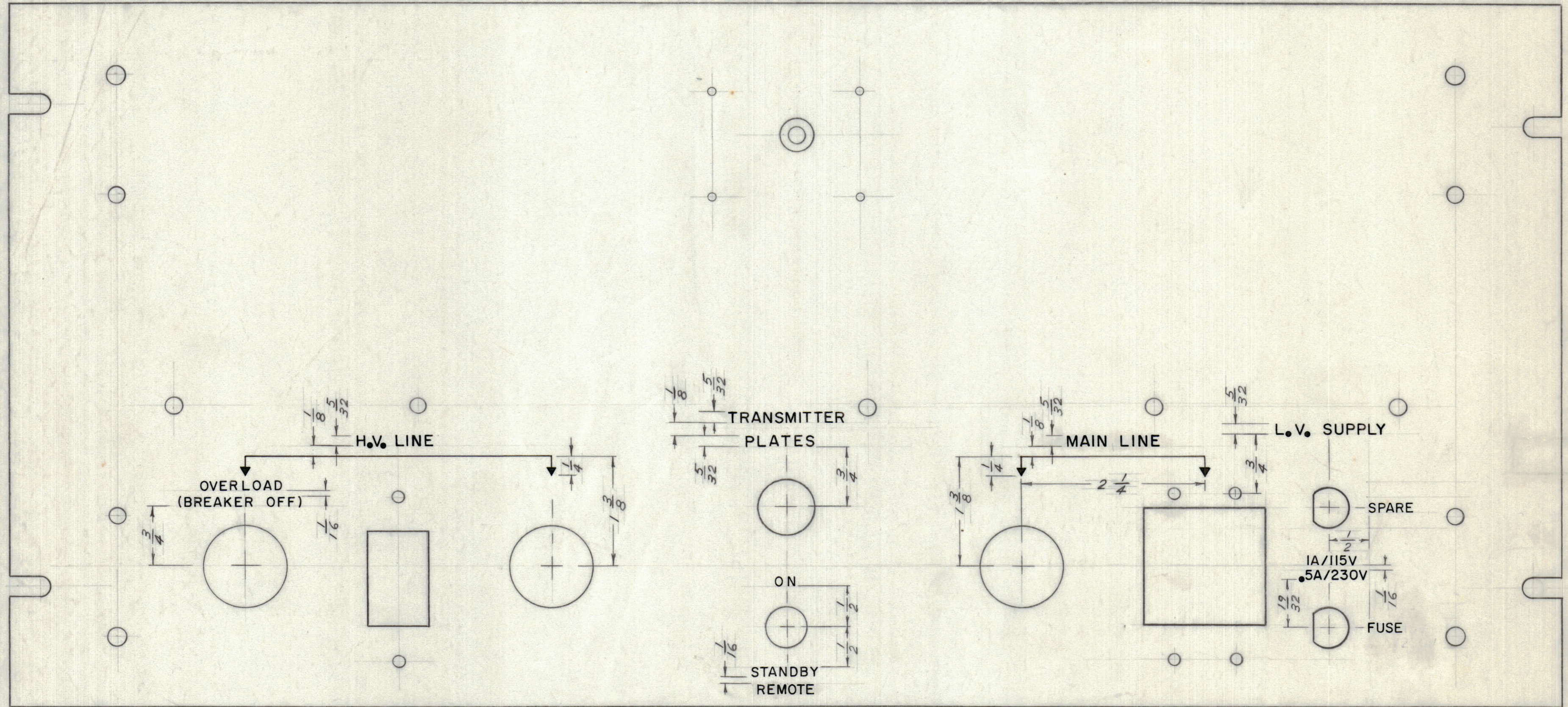


IF IT IS FOUND DESIRABLE TO CHANGE ANY TOLERANCE OR OTHER DETAIL SPECIFIED ON THIS DRAWING NOTIFY THE PURCHASER PROMPTLY.		DIMENSIONS IN INCHES UNLESS OTHERWISE SPECIFIED					
MAXIMUM ALLOWABLE TOLERANCES HAVE BEEN DETERMINED AND DEVIATIONS WILL BE CAUSE FOR REJECTION. REMOVE ALL BURRS AND SHARP EDGES.							
ISSUE	ITEM	CHANGED FROM	DATE	CN. NO.	DRAFTS	CHECKER	ENG. APP.
0		RELEASED FOR PROD.	JAN 19/66		RD		(Signature)

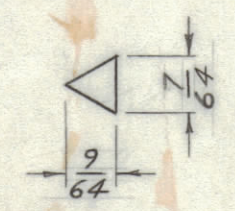
REQ.	ITEM	PART NO.	DESCRIPTION	SYMBOL
------	------	----------	-------------	--------



UNLESS OTHERWISE SPECIFIED:  
 1- ENGRAVING TO BE 1/8 GOthic,  
 WHITE FILLED, LOCATED AS SHOWN.  
 2- ENGRAVE IN ACCORDANCE WITH  
 TMC SPEC. S-566: SEE CHART

3- ARROWHEADS TO BE WHT. OUTLINE FILL  
 SEE DETAIL: N.T.S.

HEIGHT OF LETTERS	DEPTH OF STROKE	WIDTH OF STROKE
5/32	.020	.020
1/8	.020	.020
DOTS	.020	.040 DIA
LINES	.020	.015
ARROWHEAD	.020	—



FINISH NOTES: FRONT & EDGES ONLY  
 1-S114 ZINC CHROMATE PRIMER,  
 2-S115 SMOOTH GREY ENAMEL.

ENGRAVE AFTER IRIDITE BUT  
 PRIOR TO ZINC CHROMATE

REF: MS-3595 ARCHARD

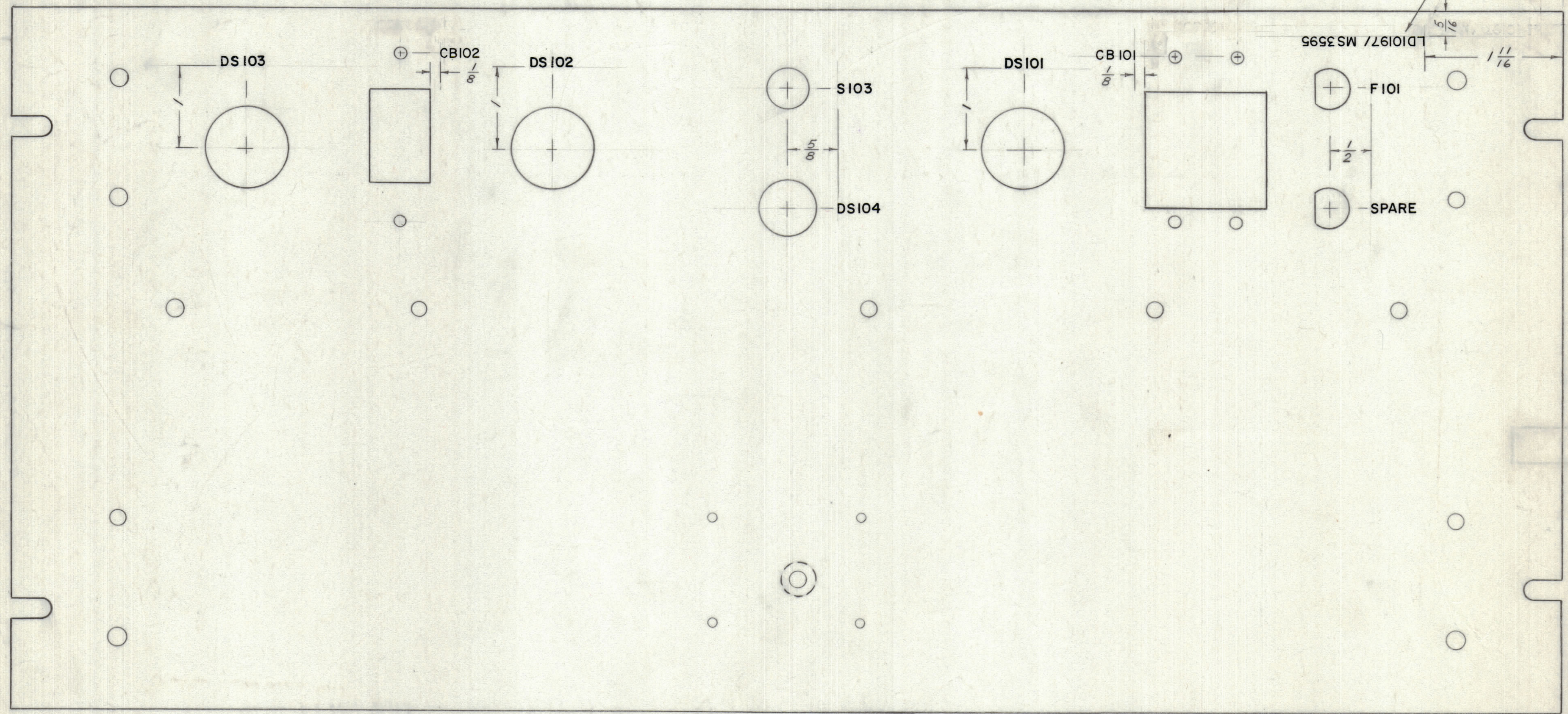
TOLERANCES		SCALE: 1:1
ALL OTHERS	DEC. DIM. ± FRAC. DIM. ± ANGULAR DIM. ±	DRILL, PUNCH, COMMERCIAL STOCK SIZES AND MANUFACTURERS TOLERANCES ARE NOT INCLUDED.

PSP-500	028/66	18 JAN 66
MODEL	PROJECT NO.	DATE

STOCK SIZE		TMC (Canada) LIMITED OTTAWA ONTARIO	
MATERIAL		MARKING, FRONT PANEL	
WEIGHT PER PC.		METHOD: ENGRAVING	
TYPE & TEMPER		RD	(Signature)
HEAT TREAT. SPEC.		ELEC. DES. APP.	MECH. DES. APP.
SEE NOTE		CHECKED	FINAL APPROVAL
FINISH & SPEC. NO.		SHT. 1 of 2	LD10197 0

IF IT IS FOUND DESIRABLE TO CHANGE ANY TOLERANCE OR OTHER DETAIL SPECIFIED ON THIS DRAWING NOTIFY THE PURCHASER PROMPTLY.		DIMENSIONS IN INCHES UNLESS OTHERWISE SPECIFIED					
MAXIMUM ALLOWABLE TOLERANCES HAVE BEEN DETERMINED AND DEVIATIONS WILL BE CAUSE FOR REJECTION. REMOVE ALL BURRS AND SHARP EDGES.							
ISSUE	ITEM	CHANGED FROM	DATE	CN. NO.	DRAFTS	CHECKER	ENG. APP.
0		SEE SHEET 1 OF 2	JAN 19/66		RD		<i>[Signature]</i>

REQ.	ITEM	PART NO.	DESCRIPTION	SYMBOL
------	------	----------	-------------	--------



MARKING PROCESS: AS PER TMC SPECIFICATION S-727.  
 LETTERING: 1/8 HIGH BLACK GOTHIC, LOCATED AS SHOWN.

TO BE SILK SCREENED AFTER ENGRAVING PRIOR TO PAINTING

REF: MS 3595 ARCHARD

STOCK SIZE		TMC (Canada) LIMITED OTTAWA ONTARIO	
MATERIAL		MARKING, FRONT PANEL	
WEIGHT PER PC.		METHOD: SILK SCREEN	
TYPE & TEMPER		RD	<i>[Signature]</i>
		DRAWN	ELEC. DES. APP. MCH. DES. APP.
		CA	
HEAT TREAT. SPEC.		CHECKED	FINAL APPROVAL
FINISH & SPEC. NO.		SHT. 2 of 2	LD10197 0

TOLERANCES		SCALE: 1:1
ALL OTHERS	DEC. DIM. ± FRAC. DIM. ± ANGULAR DIM. ±	DRILL, PUNCH, COMMERCIAL STOCK SIZES AND MANUFACTURERS TOLERANCES ARE NOT INCLUDED.

PSP 500	028/66		18 JAN 66
MODEL	PROJECT NO.	ASS'Y. NO.	DATE