

IF IT IS FOUND DESIRABLE TO CHANGE ANY TOLERANCE OR OTHER DETAIL SPECIFIED ON THIS DRAWING NOTIFY THE PURCHASER PROMPTLY.

LD10140

MAXIMUM ALLOWABLE TOLERANCES HAVE BEEN DETERMINED AND DEVIATIONS WILL BE CAUSE FOR REJECTION. REMOVE ALL BURRS AND SHARP EDGES

USED ON

MODEL

PROJECT NO.

ASS'Y. NO.

DATE

TR155

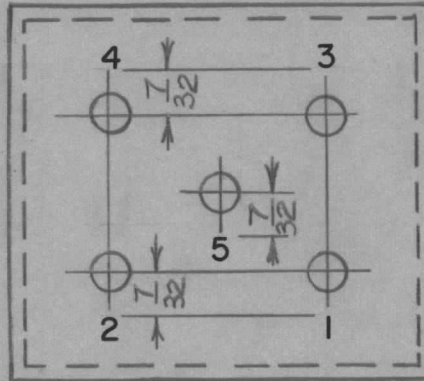
2/12/60

NOTICE TO PERSONS RECEIVING THIS DRAWING

THE TECHNICAL MATERIEL CORPORATION claims proprietary right in the material disclosed hereon. This drawing is issued in confidence for engineering information only and may not be reproduced or used to manufacture anything shown hereon without permission from THE TECHNICAL MATERIEL CORPORATION to the user. This drawing is loaned for mutual assistance and is subject to recall at any time.

Property of:

THE TECHNICAL MATERIEL CORPORATION  
MAMARONECK, NEW YORK



REF: MS10490.

NOTE: STAMPING TO BE BLACK & 1/8 HIGH.

REQ.	ITEM	PART NO.	DESCRIPTION	SYMBOL
			<b>TMC (Canada) LIMITED</b> OTTAWA ONTARIO	
STOCK SIZE				
MATERIAL			STAMPING, XFMR. BASE.	
WEIGHT PER PC.				
TYPE & TEMPER			JPC	
HEAT TREAT. SPEC.			DRAWN	ELEC. DES. APP. <i>M. W.</i> MECH. DES. APP.
FINISH & SPEC. NO.			CHECKED	FINAL APPROVAL <i>[Signature]</i>
				LD10140

ISSUE	ITEM	CHANGED FROM	DATE	CN. NO.	DRAFTS	CHECKER	ENG. APP.
TOLERANCES		SCALE 1:1					
ALL OTHERS	DEC. DIM. ±		DIMENSIONS IN INCHES				
	FRAC. DIM. ±		UNLESS OTHERWISE SPECIFIED				
	ANGULAR DIM. ±		DRILL, PUNCH, COMMERCIAL STOCK SIZES AND MANUFACTURERS TOLERANCES ARE NOT INCLUDED.				