

THE CONTENTS OF THIS DRAWING ARE THE EXCLUSIVE PROPERTY OF THE TECHNICAL MATERIEL CORP. ITS UNAUTHORIZED USE OR REPRODUCTION IN WHOLE OR IN PART IS STRICTLY FORBIDDEN.

REQ. PER UNIT

1

USED ON

MODEL

GPT-40K-10K

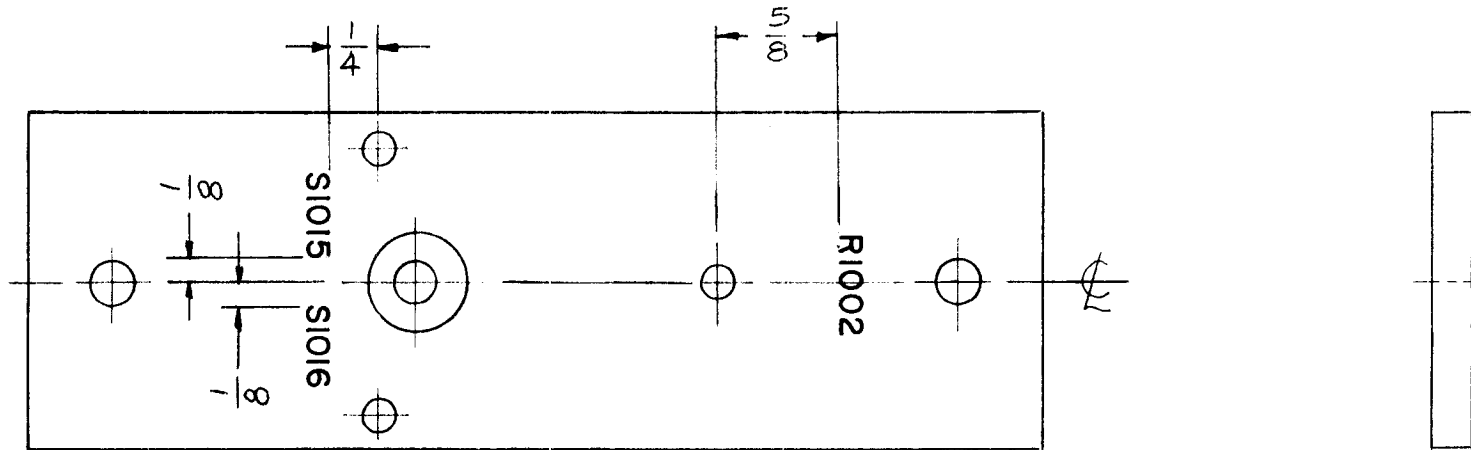
ASS'Y. NO.

AX-113

DATE

11-9-61

LD-1006



MARKING PROCESS: AS PER TMC SPEC 5-727.  
 LETTERING TO BE  $\frac{1}{8}$  HIGH  
 WHITE GOTHIC.

REF: PX-638(1)

SYM	DESCRIPTION	DATE	CH. NO.	DRAFTS	CHECKER	ENG. APP.	REQ.	ITEM	PART NO.	DESCRIPTION	SYMBOL
										THE TECHNICAL MATERIEL CORP. MAMARONECK, NEW YORK	
										LETTERING, BOARD, SWITCH MTG.	
										ab RUZZO	⊗ B
										DRAWN	CHECKED
										LD-1006	
										ELEC. DES. APP.	MECH. DES. APP.

THE CONTENTS OF THIS DRAWING ARE THE EXCLUSIVE PROPERTY OF THE TECHNICAL MATERIEL CORP. ITS UNAUTHORIZED USE OR REPRDUCTION IN WHOLE OR IN PART IS STRICTLY FORBIDDEN.

REQ. PER UNIT

1

USED ON

MODEL

KIT-113

ASS'Y. NO.

DATE

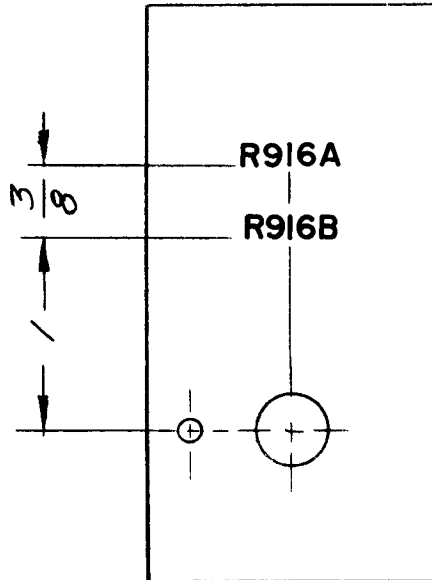
12-6-61

LD-1008

MARKING PROCESS: AS PER T.M.C SPECIFICATION S-727

ALL LETTERING TO BE  $\frac{1}{8}$  HIGH, BLACK GOTHIC,

LETTERING GROUPS TO BE CENTERED ON HOLES OR INDICATING LINES.



REF: MS-2752

REQ.	ITEM	PART NO.	DESCRIPTION			SYMBOL
			THE TECHNICAL MATERIEL CORP.			
			MAMARONECK, NEW YORK			
			LETTERING, PLATE,			
			POTENTIOMETER			
			MATERIAL			
			TYPE & TEMPER			
			HEAT TREAT. SPEC.			
			FINISH & SPEC. NO.			
			wh	llh	gfm	
			DRAWN	CHECKED	FINAL APPROVAL	
			OB	aa	LD-1008	
			ELEC. DES. APP.	MECH. DES. APP.		

UNLESS OTHERWISE SPECIFIED:  
 DIMENSIONS ARE IN INCHES  
 TOLERANCES ON  
 FRAC.  $\pm 1/64$  DEC.  $\pm .005$  ANGLES  $\pm 1/2^\circ$

SCALE:  
 MAXIMUM ALLOWABLE TOLERANCES HAVE BEEN DETERMINED AND ANY DEVIATIONS WILL BE CAUSE FOR REJECTION.  
 REMOVE ALL BURRS AND SHARP EDGES

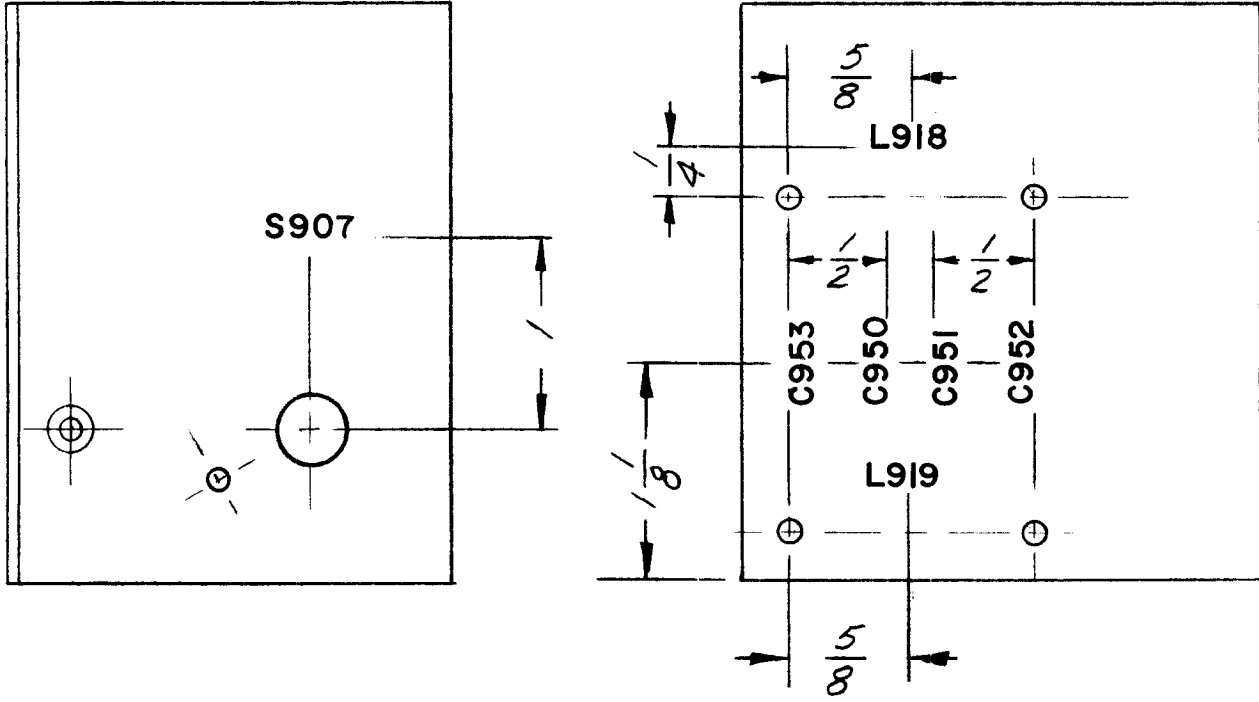
THE CONTENTS OF THIS DRAWING ARE THE EXCLUSIVE PROPERTY OF THE TECHNICAL MATERIEL CORP. ITS UNAUTHORIZED USE OR REPRODUCTION IN WHOLE OR IN PART IS STRICTLY FORBIDDEN.

REQ. PER UNIT	USED ON			LD-1009	A
	MODEL	ASS'Y. NO.	DATE		
1	KIT-113		12-6-61		

MARKING PROCESS: AS PER TMC SPECIFICATION S-727

LETTERING TO BE  $\frac{1}{8}$ " HIGH, BLACK GOTHIC

LETTERING GROUPS TO BE CENTERED ON HOLES OR INDICATING LINES.



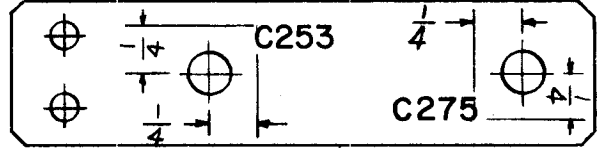
REF: MS-2753

REQ.	ITEM	PART NO.	DESCRIPTION			SYMBOL
			THE TECHNICAL MATERIEL CORP. MAMARONECK, NEW YORK			
			STOCK SIZE			
A			S907 WAS S902, C953 WAS C949. SPLINE NUT ADDED			LETTERING, BRACKET, SWITCH & DECOUPLING
			MATERIAL			
SYM	DESCRIPTION	DATE	CH. NO.	DRAFTS	CHECKER	ENG. APP.
UNLESS OTHERWISE SPECIFIED: DIMENSIONS ARE IN INCHES TOLERANCES ON FRAC. $\pm 1/64$ DEC. $\pm .005$ ANGLES $\pm 1/2^\circ$		SCALE: MAXIMUM ALLOWABLE TOLERANCES HAVE BEEN DETERMINED AND ANY DEVIATIONS WILL BE CAUSE FOR REJECTION. REMOVE ALL BURRS AND SHARP EDGES				
					TYPE & TEMPER	HEAT TREAT. SPEC.
					FINISH & SPEC. NO.	
					DRAWN	CHECKED
					ELEC. DES. APP.	MECH. DES. APP.
						LD-1009 A

THE CONTENTS OF THIS DRAWING ARE THE EXCLUSIVE PROPERTY OF THE TECHNICAL MATERIEL CORP. ITS UNAUTHORIZED USE OR REPRODUCTION IN WHOLE OR IN PART IS STRICTLY FORBIDDEN.

REQ. PER UNIT	USED ON		
	MODEL	ASS'Y. NO.	DATE
1	RFB-1		11-30-61
1	RFD-1		11-30-61
1	RFC-1		11-30-61

LD-1014



MARKING PROCESS: AS PER TMC SPECIFICATION S-727

LETTERING TO BE  
1/8 HIGH GOTHIC, BLACK.

REF. MS-1686 (1)

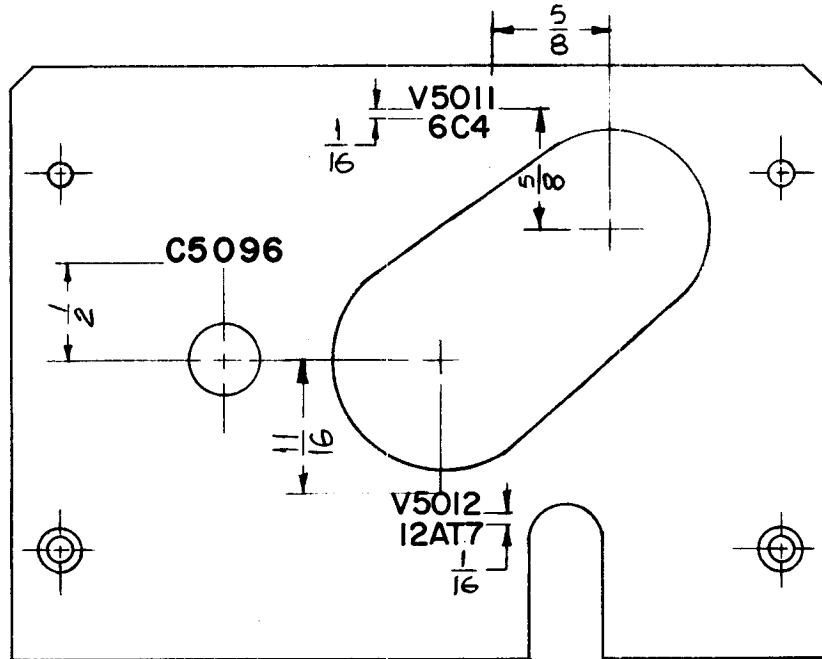
REQ.	ITEM	PART NO.	DESCRIPTION	SYMBOL								
			THE TECHNICAL MATERIEL CORP. MAMARONECK, NEW YORK									
			LETTERING, STRAP, CAPACITOR									
SYM	DESCRIPTION	DATE	CH. NO.	DRAFTS	CHECKER	ENG. APP.	MATERIAL					
	UNLESS OTHERWISE SPECIFIED: DIMENSIONS ARE IN INCHES TOLERANCES ON FRAC. ± 1/64 DEC. ± .005 ANGLES ± 1/2°	SCALE: FULL								AB	ALD	PMM
	MAXIMUM ALLOWABLE TOLERANCES HAVE BEEN DETERMINED AND ANY DEVIATIONS WILL BE CAUSE FOR REJECTION. REMOVE ALL BURRS AND SHARP EDGES									DK		LD-1014
							FINISH & SPEC. NO.	ELEC. DES. APP.	MECH. DES. APP.			

THE CONTENTS OF THIS DRAWING ARE THE EXCLUSIVE PR PERTY OF THE TECHNICAL MATERIEL CORP. ITS UNAUTHORIZED USE OR REPRODUCTION IN WHOLE OR IN PART IS STRICTLY FORBIDDEN.

REQ. PER UNIT	USED ON		
	MODEL	ASS'Y. NO.	DATE
1	AFC-2		12/12/61

LD-1026

MARKING PROCESS: AS PER TMC SPECIFICATION S-727



NOTE: ALL LETTERING TO BE 1/8" HIGH BLACK GOTHIC

REF: MS-2758

REQ.	ITEM	PART NO.	DESCRIPTION		SYMBOL
			THE TECHNICAL MATERIEL CORP.		
			MAMARONECK, NEW YORK		
			LETTERING HOUSING COVER OVEN		
			HIGH FREQ.		
			MATERIAL		
			TYPE & TEMPER		
			HEAT TREAT. SPEC.		
			FINISH & SPEC. NO.		
			DRAWN		
			CHECKED		
			FINAL APPROVAL		
			ELEC. DES. APP.		
			MECH. DES. APP.		

<p>UNLESS OTHERWISE SPECIFIED:</p> <p>DIMENSIONS ARE IN INCHES</p> <p>TOLERANCES ON</p> <p>FRAC. ± 1/64 DEC. ± .05 ANGLES ± 1/2°</p>	<p>SCALE:</p> <p>MAXIMUM ALLOWABLE TOLERANCES HAVE BEEN DETERMINED AND ANY DEVIATIONS WILL BE CAUSE FOR REJECTION.</p> <p>REMOVE ALL BURRS AND SHARP EDGES</p>
--	--

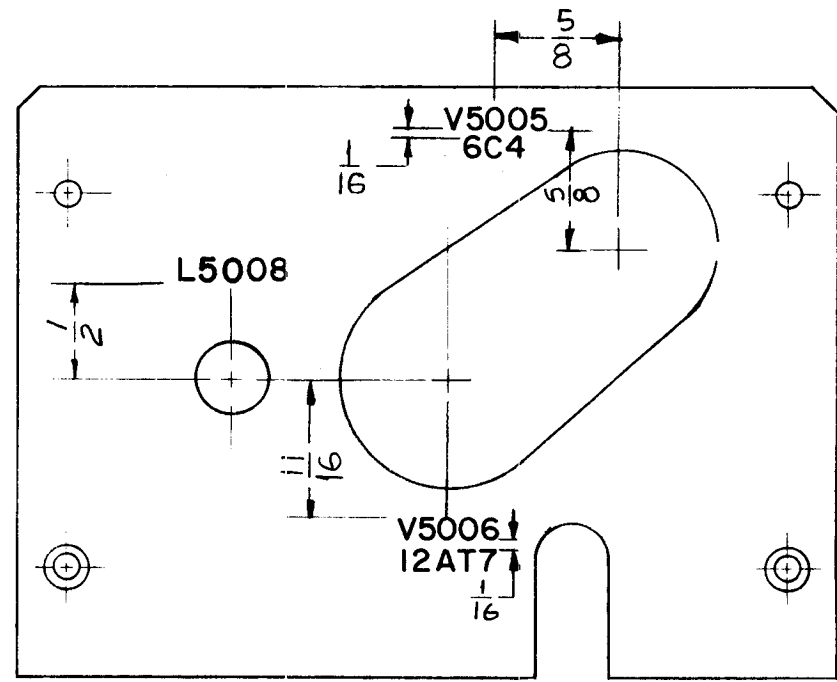
THE CONTENTS OF THIS DRAWING ARE THE EXCLUSIVE PROPERTY OF THE TECHNICAL MATERIEL CORP. ITS UNAUTHORIZED USE OR REPRCDUCTION IN WHOLE OR IN PART IS STRICTLY FORBIDDEN.

REQ. PER UNIT	USED ON		
	MODEL	ASS'Y. NO.	DATE
1	AFC-2		12/12/61

LD-1027

MARKING PROCESS: AS PER TMC SPECIFICATION S-727

NOTE: ALL LETTERING TO BE 1/8" HIGH BLACK GOTHIC



REF: MS-2758

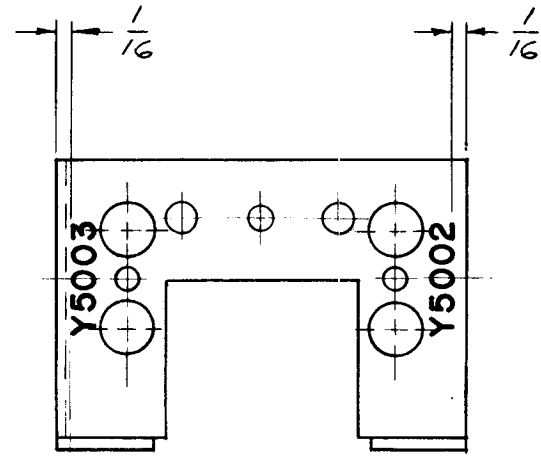
REQ.	ITEM	PART NO.	DESCRIPTION				SYMBOL
			THE TECHNICAL MATERIEL CORP.				
			MAMARONECK, NEW YORK				
			LETTERING, HOUSING COVER OVEN				
			LOW FREQ.				
			MATERIAL				
			TYPE & TEMPER HEAT TREAT. SPEC.				
			FINISH & SPEC. NO.				
SYM	DESCRIPTION	DATE	CH. NO.	DRAFTS	CHECKER	ENG. APP.	
UNLESS OTHERWISE SPECIFIED:		SCALE:					
DIMENSIONS ARE IN INCHES		MAXIMUM ALLOWABLE TOLERANCES HAVE BEEN DETERMINED AND ANY DEVIATIONS WILL BE CAUSE FOR REJECTION.					
TOLERANCES ON		REMOVE ALL BURRS AND SHARP EDGES					
FRAC. ± 1/64 DEC. ± .005 ANGLES ± 1/2°							
							W.S.
							DRAWN
							CHECKED
							FINAL APPROVAL
							LD-1027

THE CONTENTS OF THIS DRAWING ARE THE EXCLUSIVE PROPERTY OF THE TECHNICAL MATERIEL CORP. ITS UNAUTHORIZED USE OR REPRDUCTION IN WHOLE OR IN PART IS STRICTLY FORBIDDEN.

REQ. PER UNIT	USED ON			LD-1028
	MODEL	ASS'Y. NO.	DATE	
1	AFC-2		12/14/61	

NOTE: ALL LETTERING TO BE 1/8" HIGH BLACK GOTHIC

MARKING PROCESS: AS PER TMC SPECIFICATION S-727



REF: MS-2760

REQ.	ITEM	PART NO.	DESCRIPTION			SYMBOL
			THE TECHNICAL MATERIEL CORP. MAMARONECK, NEW YORK			
			LETTERING OVEN BRACKET			
			HIGH FREQ.			
			MATERIAL			
			TYPE & TEMPER			
			HEATTREAT. SPEC.			
			FINISH & SPEC. NO.			
			W.S.	Checked	Final Approval	
			Drawn	Checked	LD-1028	
			ELEC. DES. APP.	MECH. DES. APP.		

UNLESS OTHERWISE SPECIFIED:  
DIMENSIONS ARE IN INCHES  
TOLERANCES ON  
FRAC. ± 1/64 DEC. ± .005 ANGLES ± 1/2°

SCALE:  
MAXIMUM ALLOWABLE TOLERANCES HAVE BEEN DETERMINED AND ANY DEVIATIONS WILL BE CAUSE FOR REJECTION.  
REMOVE ALL BURRS AND SHARP EDGES

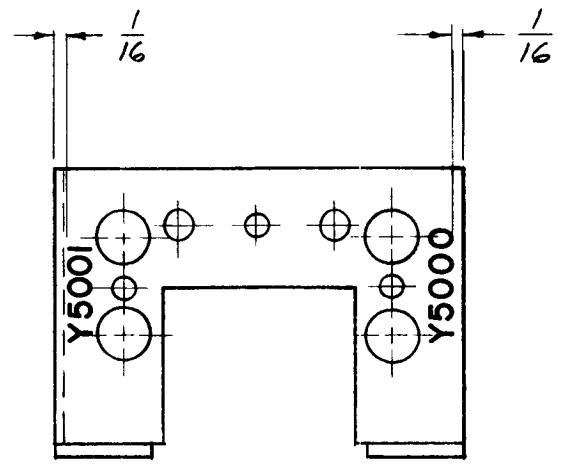
THE CONTENTS OF THIS DRAWING ARE THE EXCLUSIVE PROPERTY OF THE TECHNICAL MATERIEL CORP. ITS UNAUTHORIZED USE OR REPRODUCTION IN WHOLE OR IN PART IS STRICTLY FORBIDDEN.

REQ. PER UNIT	USED ON		
	MODEL	ASS'Y. NO.	DATE
1	AFC-2		12/14/61

LD-1029

NOTE: ALL LETTERING TO BE 1/8" HIGH BLACK GOTHIC

MARKING PROCESS: AS PER TMC SPECIFICATION S-727



REF: MS-2760

REQ.	ITEM	PART NO.	DESCRIPTION				SYMBOL
			THE TECHNICAL MATERIEL CORP. MAMARONECK, NEW YORK				
			LETTERING OVEN BRACKET				
			LOW FREQ.				
			MATERIAL				
			TYPE & TEMPER				
			HEATTREAT. SPEC.				
			FINISH & SPEC. NO.				
			DRAWN				
			CHECKED				
			FINAL APPROVAL				
			ELEC. DES. APP.				
			MECH. DES. APP.				

SYM	DESCRIPTION	DATE	CH. NO.	DRAFTS	CHECKER	ENG. APP.

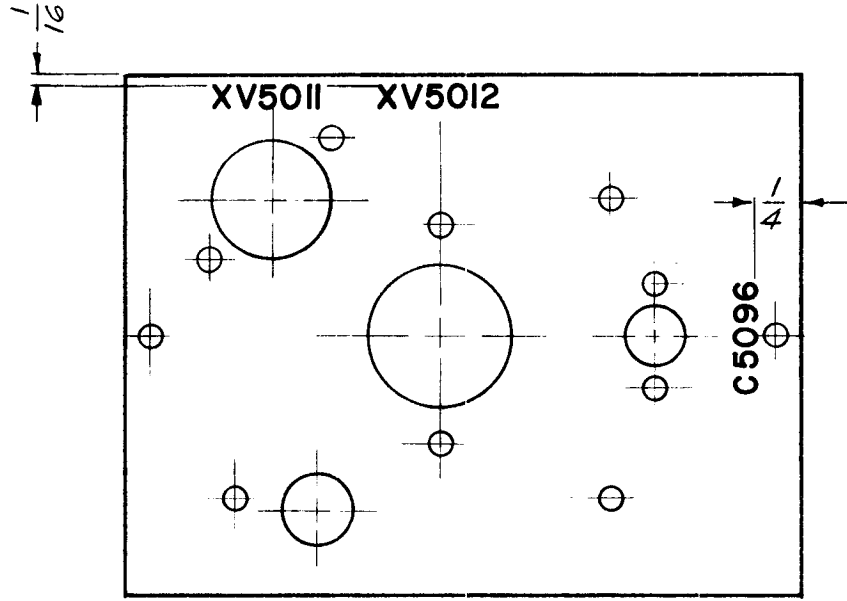
UNLESS OTHERWISE SPECIFIED: DIMENSIONS ARE IN INCHES TOLERANCES ON FRAC. ± 1/64 DEC. ± .005 ANGLES ± 1/2°	SCALE: MAXIMUM ALLOWABLE TOLERANCES HAVE BEEN DETERMINED AND ANY DEVIATIONS WILL BE CAUSE FOR REJECTION. REMOVE ALL BURRS AND SHARP EDGES
--	---



THE CONTENTS OF THIS DRAWING ARE THE EXCLUSIVE PROPERTY OF THE TECHNICAL MATERIEL CORP. ITS UNAUTHORIZED USE OR REPRCDUCTION IN WHOLE OR IN PART IS STRICTLY FORBIDDEN.

REQ. PER UNIT	USED ON		
	MODEL	ASS'Y. NO.	DATE
1	AFC-2		12-14-61

LD-1030



NOTE: ALL LETTERING TO BE 1/8" HIGH BLACK GOTHIC

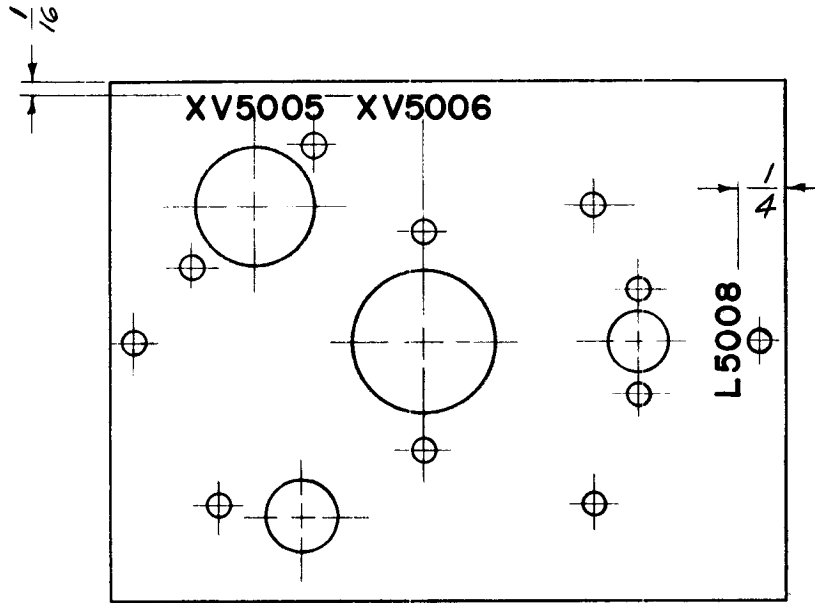
MARKING PROCESS: AS PER TMC SPECIFICATION S-727

REF: MS-2759

SYM	DESCRIPTION	DATE	CH. NO.	DRAFTS	CHECKER	ENG. APP.	REQ. ITEM	PART NO.	DESCRIPTION	SYMBOL
									THE TECHNICAL MATERIEL CORP.	
									MAMARONECK, NEW YORK	
									LETTERING CRYSTAL OSC. CHASSIS	
									HIGH FREQ.	
UNLESS OTHERWISE SPECIFIED:									W.S.	
DIMENSIONS ARE IN INCHES									A.W.G.	
TOLERANCES ON									J.W.F.	
FRAC. ± 1/64 DEC. ± .005 ANGLES ± 1/2°									P.M.	
SCALE:									LD-1030	
MAXIMUM ALLOWABLE TOLERANCES HAVE BEEN DETERMINED AND ANY DEVIATIONS WILL BE CAUSE FOR REJECTION.							TYPE & TEMPER		DRAWN	
REMOVE ALL BURRS AND SHARP EDGES							HEAT TREAT. SPEC.		CHECKED	
							FINISH & SPEC. NO.		ELEC. DES. APP.	
									MECH. DES. APP.	

THE CONTENTS OF THIS DRAWING ARE THE EXCLUSIVE PROPERTY OF THE TECHNICAL MATERIEL CORP. ITS UNAUTHORIZED USE OR REPRODUCTION IN WHOLE OR IN PART IS STRICTLY FORBIDDEN.

REQ. PER UNIT	USED ON			LD-1031	A
	MODEL	ASS'Y. NO.	DATE		
1	AFC-2		12/14/61		



NOTE: ALL LETTERING TO BE 1/8" HIGH BLACK GOTHIC

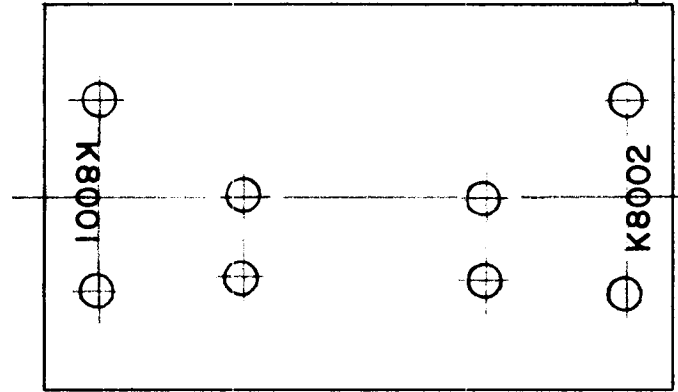
MARKING PROCESS: AS PER TMC SPECIFICATION S-727

REF: MS-2759

REQ.	ITEM	PART NO.	DESCRIPTION				SYMBOL
			THE TECHNICAL MATERIEL CORP. MAMARONECK, NEW YORK				
A	REF. WAS MS-2757	2-16-62 6373	G.S.	LETTERING CRYSTAL OSC. CHASSIS			
1	L5008 WAS L5054			LOW FREQ.			
SYM	DESCRIPTION	DATE	CH. NO.	DRAFTS	CHECKER	ENG. APP.	
UNLESS OTHERWISE SPECIFIED: DIMENSIONS ARE IN INCHES TOLERANCES ON FRAC. ± 1/64 DEC. ± .005 ANGLES ± 1/2°		SCALE: MAXIMUM ALLOWABLE TOLERANCES HAVE BEEN DETERMINED AND ANY DEVIATIONS WILL BE CAUSE FOR REJECTION. REMOVE ALL BURRS AND SHARP EDGES					
		TYPE & TEMPER		HEATTREAT. SPEC.		W.S.	
		FINISH & SPEC. NO.		DRAWN		CHECKED	FINAL APPROVAL
				ELEC. DES. APP.		MECH. DES. APP.	LD-1031 A

THE CONTENTS OF THIS DRAWING ARE THE EXCLUSIVE PROPERTY OF THE TECHNICAL MATERIEL CORP. ITS UNAUTHORIZED USE OR REPRODUCTION IN WHOLE OR IN PART IS STRICTLY FORBIDDEN.

REQ. PER UNIT	USED ON			LD-1033
	MODEL	ASS'Y. NO.	DATE	
1	HFP-1	A-2382-1	12-8-61	



MARKING PROCESS: AS PER TMC SPECIFICATION S-727

LETTERING TO BE  $\frac{1}{8}$  HIGH BLACK LUSTERLESS GOTHIC

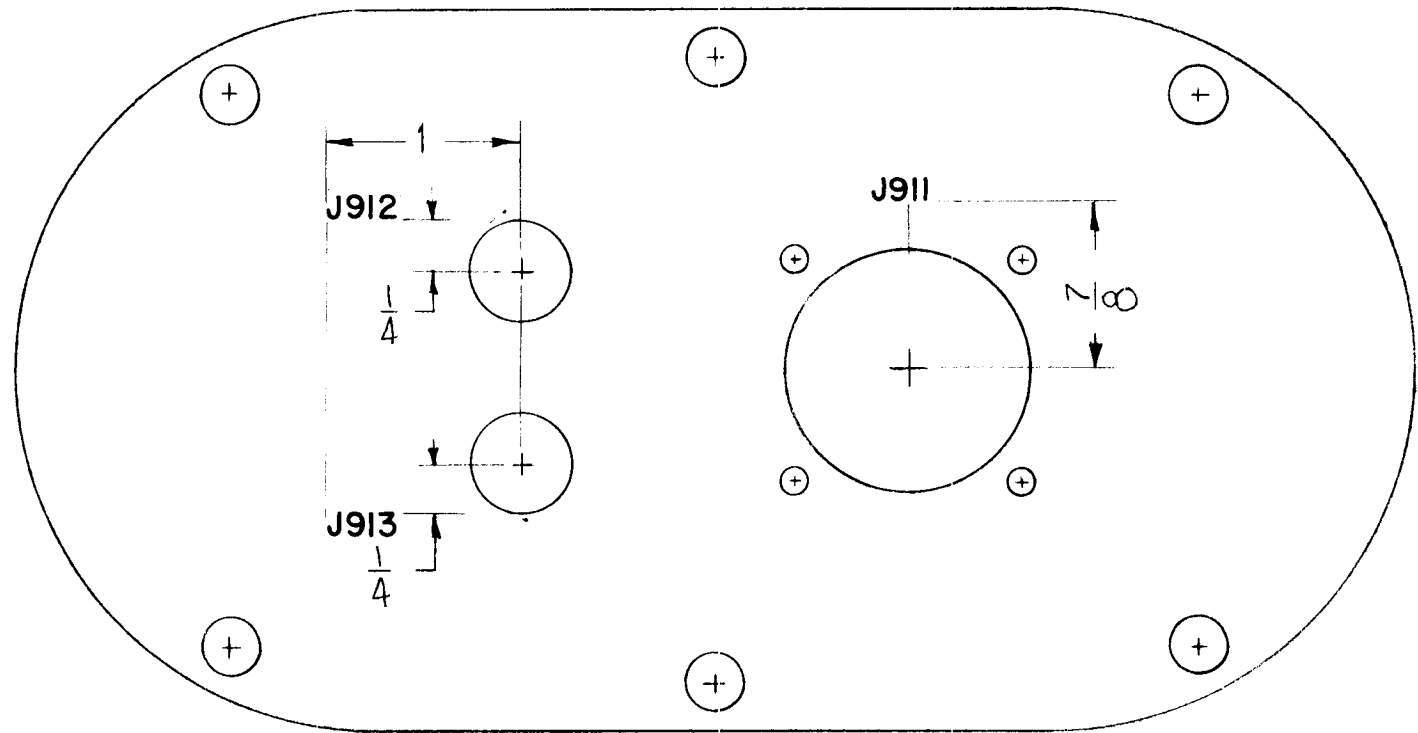
REF: MS-2768 (1)

							REQ.	ITEM	PART NO.	KOHN	DESCRIPTION	SYMBOL	
											THE TECHNICAL MATERIEL CORP.		
											MAMARONECK, NEW YORK		
											LETTERING, BRACKET,		
											RELAY, MTG.		
SYM	DESCRIPTION	DATE	CH. NO.	DRAFTS	CHECKER	ENG. APP.							
UNLESS OTHERWISE SPECIFIED: DIMENSIONS ARE IN INCHES TOLERANCES ON FRAC. $\pm 1/64$ DEC. $\pm .05$ ANGLES $\pm 1/2^\circ$		SCALE:				MAXIMUM ALLOWABLE TOLERANCES HAVE BEEN DETERMINED AND ANY DEVIATIONS WILL BE CAUSE FOR REJECTION. REMOVE ALL BURRS AND SHARP EDGES					ab	file	BP
							TYPE & TEMPER	HEAT TREAT. SPEC.		DRAWN	CHECKED	FINAL APPROVAL	
										RK	RK	LD-1033	
							FINISH & SPEC. NO.			ELEC. DES. APP.	MECH. DES. APP.		

THE CONTENTS OF THIS DRAWING ARE THE EXCLUSIVE PROPERTY OF THE TECHNICAL MATERIEL CORP. ITS UNAUTHORIZED USE OR REPRODUCTION IN WHOLE OR IN PART IS STRICTLY FORBIDDEN.

REQ. PER UNIT	USED ON			LD-1039
	MODEL	ASS'Y. NO.	DATE	
1	RAK-11B-1		1-5-62	

MARKING PROCESS: AS PER TMC SPECIFICATION S-727



NOTE —  
 STAMP OPPOSITE SIDE IDENTICAL.  
 ALL LETTERING 1/8 HIGH WHITE GOTHIC.

REF: MS-2806-S (2)

SYM	DESCRIPTION	DATE	CH. NO.	DRAFTS	CHECKER	ENG. APP.	REQ.	ITEM	PART NO.	DESCRIPTION	SYMBOL
										THE TECHNICAL MATERIEL CORP. MAMARONECK, NEW YORK	
										LETTERING, INTERCONNECT CONNECTOR PLATE	
										GDL RUZZO	
										DRAWN	CHECKED
										RK	
										ELEC. DES. APP.	MECH. DES. APP.
											LD-1039

UNLESS OTHERWISE SPECIFIED:  
 DIMENSIONS ARE IN INCHES  
 TOLERANCES ON  
 FRAC. ± 1/64 DEC. ± .005 ANGLES ± 1/2°

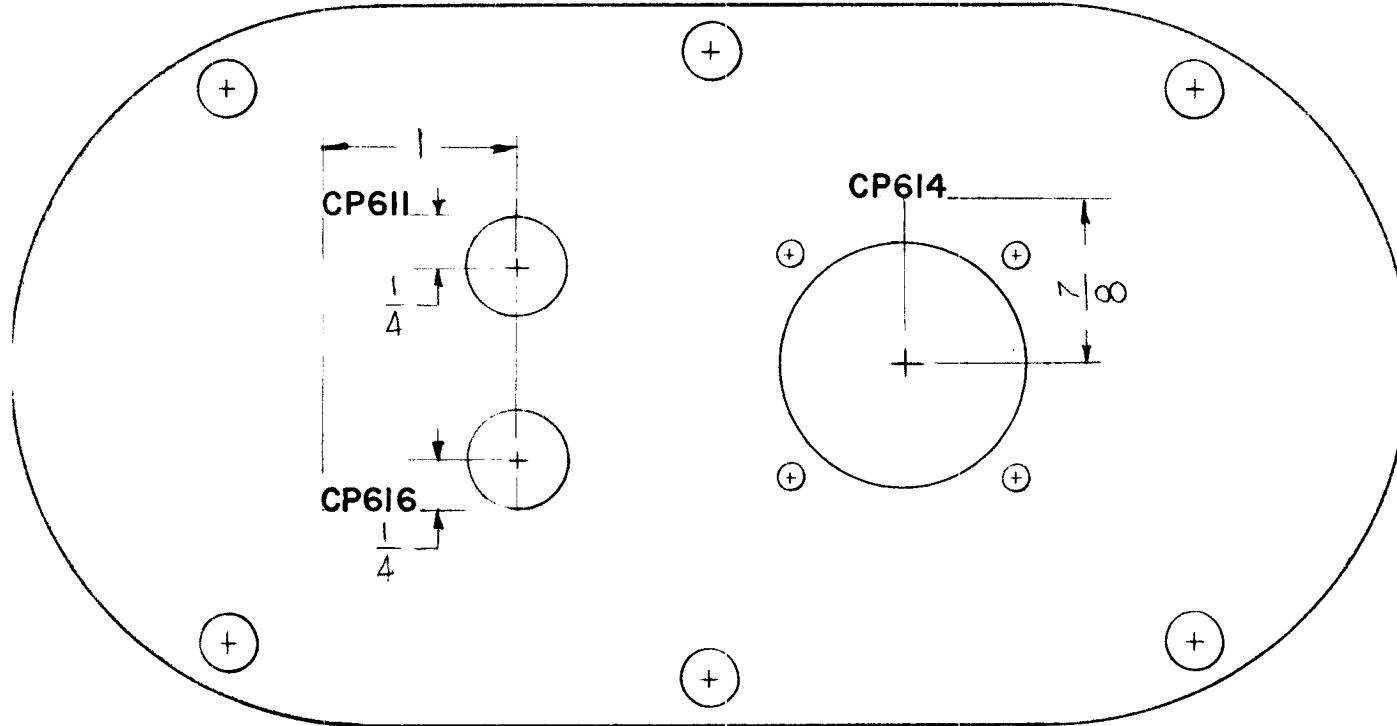
SCALE:  
 MAXIMUM ALLOWABLE TOLERANCES HAVE BEEN DETERMINED AND ANY DEVIATIONS WILL BE CAUSE FOR REJECTION.  
 REMOVE ALL BURRS AND SHARP EDGES

THE CONTENTS OF THIS DRAWING ARE THE EXCLUSIVE PROPERTY OF THE TECHNICAL MATERIEL CORP. ITS UNAUTHORIZED USE OR REPRODUCTION IN WHOLE OR IN PART IS STRICTLY FORBIDDEN.

REQ. PER UNIT	USED ON	
	MODEL	ASS'Y. NO.
1	KIT-132	DATE
		1-5-62

LD-1041

MARKING PROCESS: AS PER T.M.C. SPECIFICATION S-721



NOTE —  
 STAMP OPPOSITE SIDE IDENTICAL.  
 ALL LETTERING 1/8 HIGH WHITE GOTHIC

REF: MS-2806-5 (2)

REQ.	ITEM	PART NO.	DESCRIPTION		SYMBOL
			THE TECHNICAL MATERIEL CORP.		
			MAMARONECK, NEW YORK		
			LETTERING, ADAPTER PLATE		
			MATERIAL		
				G.D.L. RUIZZO	SPM
			TYPE & TEMPER	DRAWN	CHECKED
			HEAT TREAT. SPEC.	RK	
			FINISH & SPEC. NO.	KLEC. DES. APP.	MECH. DES. APP.
					LD-1041

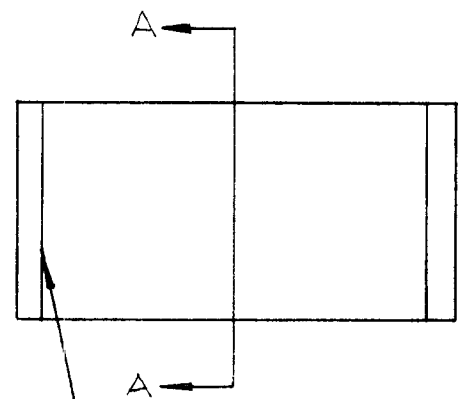
UNLESS OTHERWISE SPECIFIED:  
 DIMENSIONS ARE IN INCHES  
 TOLERANCES ON  
 FRAC. ± 1/64 DEC. ± .005 ANGLES ± 1/2°

SCALE:  
 MAXIMUM ALLOWABLE TOLERANCES HAVE BEEN DETERMINED AND ANY DEVIATIONS WILL BE CAUSE FOR REJECTION. REMOVE ALL BURRS AND SHARP EDGES

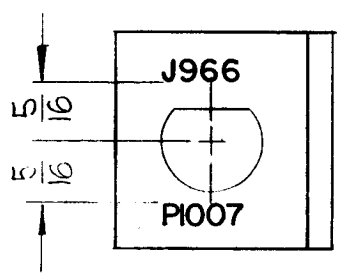
A

THE CONTENTS OF THIS DRAWING ARE THE EXCLUSIVE PROPERTY OF THE TECHNICAL MATERIEL CORP. ITS UNAUTHORIZED USE OR REPRODUCTION IN WHOLE OR IN PART IS STRICTLY FORBIDDEN.

REQ. PER UNIT	USED ON			LD-1042
	MODEL	ASS'Y. NO.	DATE	
1	GPT-10K	AX-238	3-5-62	



LETTERING TO BE PLACED ON THE INSIDE OF LIP AS SHOWN IN SECTION A-A.



SECTION "A"-A"

ALL LETTERING TO BE 1/8" HIGH BLACK GOTHIC.

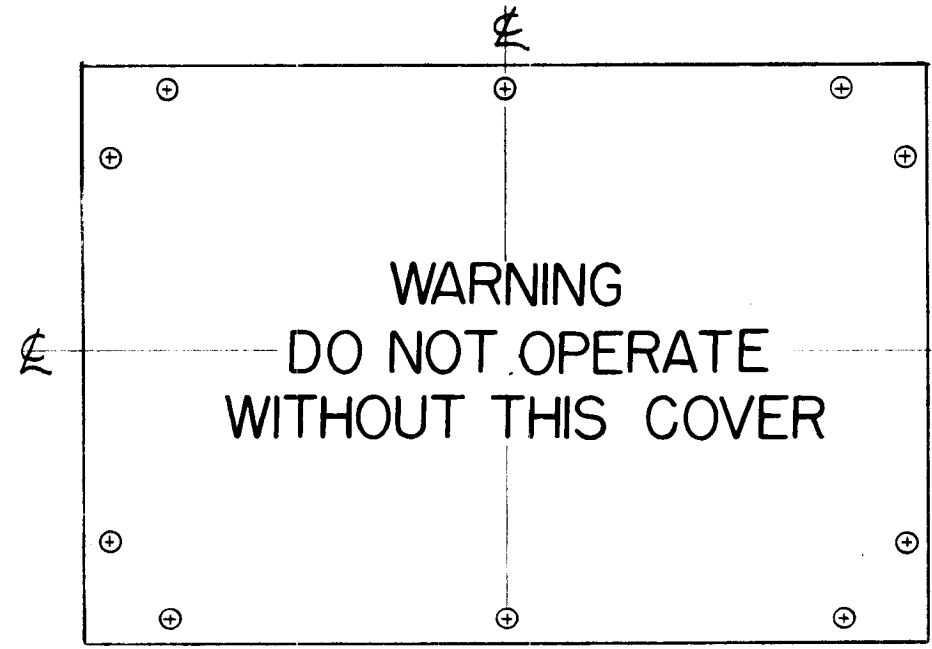
MARKING PROCESS: AS PER TMC SPECIFICATION S-727

REF: MS-2813(1)

							REQ.	ITEM	PART NO.	F. BUDETTI	DESCRIPTION	SYMBOL	
							STOCK SIZE		THE TECHNICAL MATERIEL CORP. MAMARONECK, NEW YORK LETTERING, CONNECTOR MOUNTING BRACKET				
							MATERIAL						
SYM	DESCRIPTION	DATE	CH. NO.	DRAFTS	CHECKER	ENG. APP.			GG	<i>fude</i>	<i>[Signature]</i>		
UNLESS OTHERWISE SPECIFIED: DIMENSIONS ARE IN INCHES TOLERANCES ON FRAC. $\pm 1/64$ DEC. $\pm .05$ ANGLES $\pm 1/2^\circ$		SCALE:							DRAWN	CHECKED	FINAL APPROVAL		
		MAXIMUM ALLOWABLE TOLERANCES HAVE BEEN DETERMINED AND ANY DEVIATIONS WILL BE CAUSE FOR REJECTION. REMOVE ALL BURRS AND SHARP EDGES							GG	<i>GG</i>	LD-1042		
							FINISH & SPEC. NO.		ELEC. DES. APP.		MECH. DES. APP.		

THE CONTENTS OF THIS DRAWING ARE THE EXCLUSIVE PROPERTY OF THE TECHNICAL MATERIEL CORP. ITS UNAUTHORIZED USE OR REPRODUCTION IN WHOLE OR IN PART IS STRICTLY FORBIDDEN.

REQ. PER UNIT	USED ON			LD-1063
	MODEL	ASS'Y. NO.	DATE	
1	RFD		3-13-62	



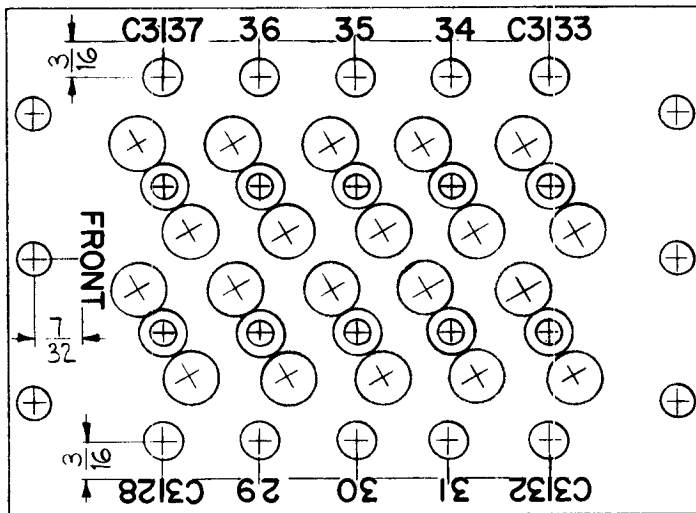
ALL LETTERING TO BE 1/4" HIGH RED GOTHIC MARKING PROCESS: AS PER TMC SPECIFICATION S-727

REF. - MS-1439 (1)

SYM	DESCRIPTION	DATE	CH. NO.	DRAFTS	CHECKER	ENG. APP.	REQ.	ITEM	PART NO.	DESCRIPTION	SYMBOL
										F. Pollett	
							STOCK SIZE		THE TECHNICAL MATERIEL CORP. MAMARONECK, NEW YORK		
							MATERIAL		LETTERING, TUBE CHASSIS COVER		
UNLESS OTHERWISE SPECIFIED: DIMENSIONS ARE IN INCHES TOLERANCES ON FRAC. ± 1/64 DEC. ± .005 ANGLES ± 1/2°							SCALE:		DRAWN		
							TYPE & TEMPER		CHECKED		
							HEAT TREAT. SPEC.		FINAL APPROVAL		
							FINISH & SPEC. NO.		ELEC. DES. APP. MECH. DES. APP.		
									LD-1063		

THE CONTENTS OF THIS DRAWING ARE THE EXCLUSIVE PROPERTY OF THE TECHNICAL MATERIEL CORP. ITS UNAUTHORIZED USE OR REPRODUCTION IN WHOLE OR IN PART IS STRICTLY FORBIDDEN.

REQ. PER UNIT	USED ON			LD-1073
	MODEL	ASS'Y. NO.	DATE	
1	HFS-1	3100	8-17-62	



UNLESS OTHERWISE SPECIFIED~  
 1/8 HIGH BLACK LUSTERLESS, GOTHIC LETTERING.  
 MARKING PROCESS: AS PER TMC SPECIFICATION S-727  
 LETTERING TO BE CENTERED ON HOLES.

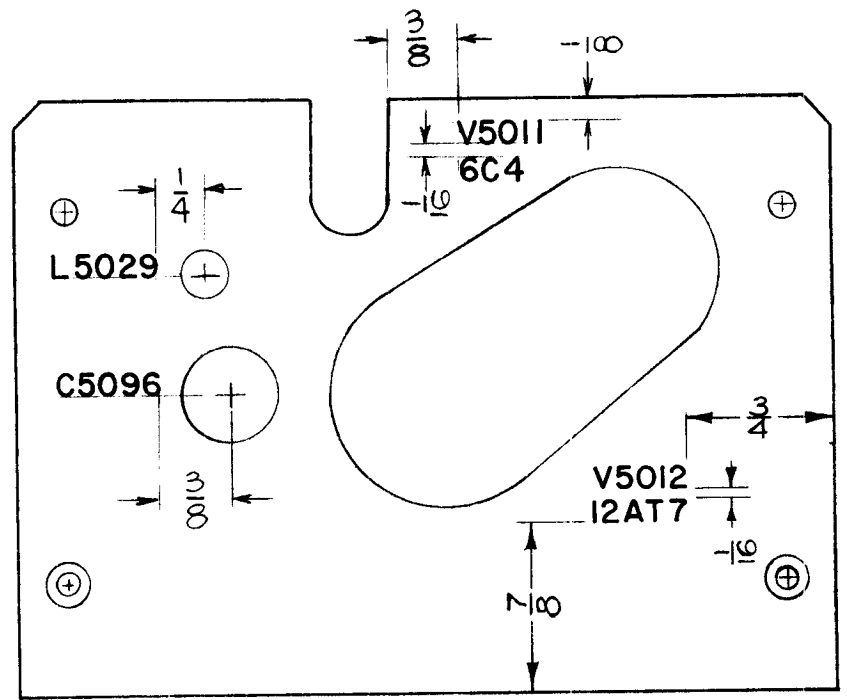
REF: PX-658(1).

REQ.	ITEM	PART NO.	J STRUMMER DESCRIPTION		SYMBOL								
			THE TECHNICAL MATERIEL CORP.										
			MAMARONECK, NEW YORK										
			LETTERING, CRYSTAL, MTG. BOARD										
			3100 DECK										
SYM	DESCRIPTION	DATE	CH. NO.	DRAFTS	CHECKER	ENG. APP.	MATERIAL	TYPE & TEMPER	HEATTREAT. SPEC.	DRAWN	CHECKED	FINAL APPROVAL	
UNLESS OTHERWISE SPECIFIED: DIMENSIONS ARE IN INCHES TOLERANCES ON FRAC. ± 1/64 DEC. ± .005 ANGLES ± 1/2°		SCALE:		MAXIMUM ALLOWABLE TOLERANCES HAVE BEEN DETERMINED AND ANY DEVIATIONS WILL BE CAUSE FOR REJECTION. REMOVE ALL BURRS AND SHARP EDGES							<i>JMA</i>	<i>JMA</i>	<i>BP</i>
												LD-1073	



THE CONTENTS OF THIS DRAWING ARE THE EXCLUSIVE PROPERTY OF THE TECHNICAL MATERIEL CORP. ITS UNAUTHORIZED USE OR REPRODUCTION IN WHOLE OR IN PART IS STRICTLY FORBIDDEN.

REQ. PER UNIT	USED ON			LD-1075	A
	MODEL	ASSY. NO.	DATE		
1	AFC-2A/AFC-3		7-26-62		



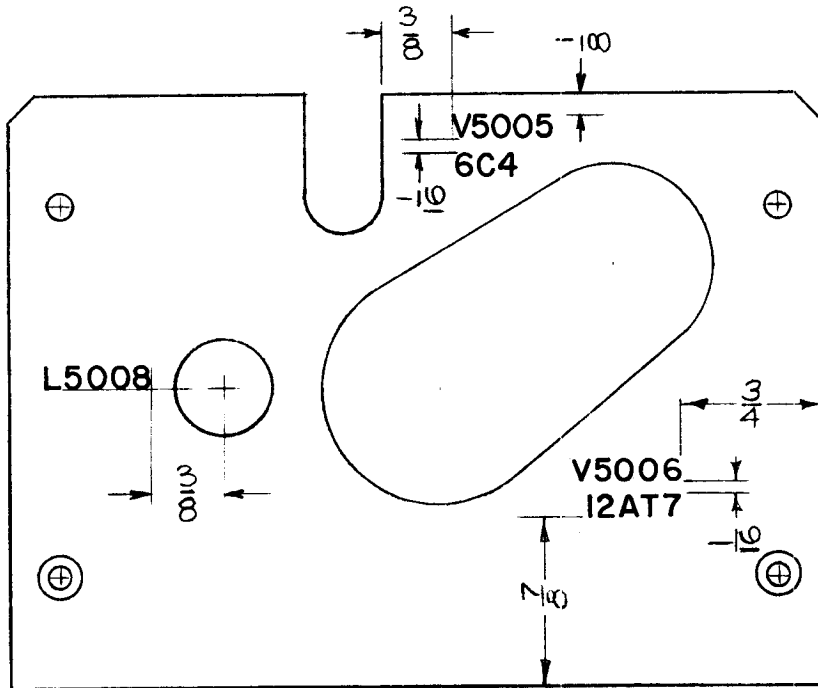
MARKING PROCESS: AS PER TMC SPECIFICATION S-72Z  
 LETTERING: 1/8 HIGH BLACK, GOTHIC LOCATED AS SHOWN.

REF: M5-2926-1

REQ.	ITEM	PART NO.	DESCRIPTION				SYMBOL
			THE TECHNICAL MATERIEL CORP. MAMARONECK, NEW YORK				
			LETTERING, OVEN HOUSING				
			COVER #1				
A	RELOCATED LETTERING V5012 12AT7	3-6-63 8375	RC	JMZ	JMZ		
SYM	DESCRIPTION	DATE	CH. NO.	DRAFTS	CHECKER	ENG. APP.	
UNLESS OTHERWISE SPECIFIED: DIMENSIONS ARE IN INCHES TOLERANCES ON FRAC. ± 1/64 DEC. ± 0.05 ANGLES ± 1/2°		SCALE: DO NOT SCALE MAXIMUM ALLOWABLE TOLERANCES HAVE BEEN DETERMINED AND ANY DEVIATIONS WILL BE CAUSE FOR REJECTION. REMOVE ALL BURRS AND SHARP EDGES					
					V.I.R.R.	JMZ	
					DRAWN	CHECKED	
						FINAL APPROVAL	
						LD-1075	
						A	
					FINISH & SPEC. NO.	ELEC. DES. APP. MECH. DES. APP.	

THE CONTENTS OF THIS DRAWING ARE THE EXCLUSIVE PROPERTY OF THE TECHNICAL MATERIEL CORP. ITS UNAUTHORIZED USE OR REPR DUCTION IN WHOLE OR IN PART IS STRICTLY FORBIDDEN.

REQ. PER UNIT	USED ON		DATE	SYMBOL
	MODEL	ASS'Y. NO.		
1	AFC-3		7-26-62	LD-1076 A
1	AFC-2A		7-26-62	



MARKING PROCESS: AS PER TMC SPECIFICATION S-727.

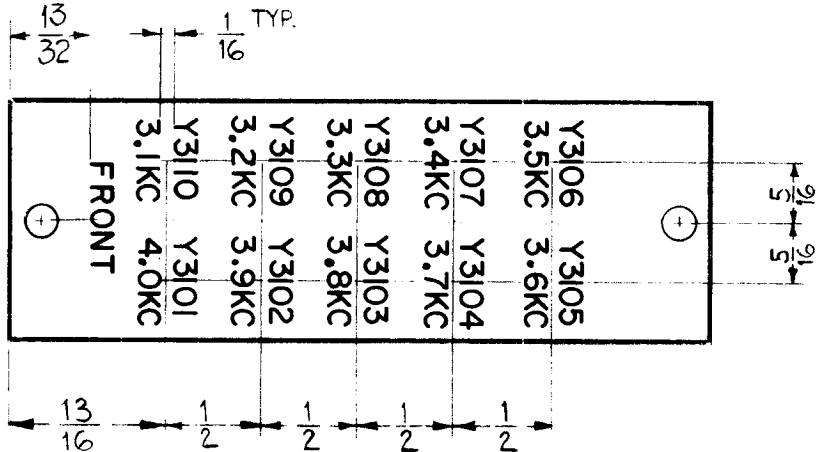
LETTERING: 1/8 HIGH BLACK, GOTHIC LOCATED AS SHOWN.

REF: MS-2926-2

REQ.	ITEM	PART NO.	DESCRIPTION			SYMBOL
			THE TECHNICAL MATERIEL CORP. MAMARONECK, NEW YORK			
			LETTERING, OVEN HOUSING			
			COVER #2			
A	RELOCATED LETTERING "V5006" "12AT7"	3-6-63 8375	RC	<i>My</i>	<i>[Signature]</i>	
SYM	DESCRIPTION	DATE	CH. NO.	DRAFTS	CHECKER	ENG. APP.
	UNLESS OTHERWISE SPECIFIED: DIMENSIONS ARE IN INCHES TOLERANCES ON FRAC. ± 1/64 DEC. ± .05 ANGLES ± 1/2°	SCALE: DO NOT SCALE MAXIMUM ALLOWABLE TOLERANCES HAVE BEEN DETERMINED AND ANY DEVIATIONS WILL BE CAUSE FOR REJECTION. REMOVE ALL BURRS AND SHARP EDGES				
					VRR	<i>[Signature]</i>
					DRAWN	CHECKED
						FINAL APPROVAL
						LD-1076 A
					ELEC. DES. APP.	MECH. DES. APP.

THE CONTENTS OF THIS DRAWING ARE THE EXCLUSIVE PROPERTY OF THE TECHNICAL MATERIEL CORP. ITS UNAUTHORIZED USE OR REPRODUCTION IN WHOLE OR IN PART IS STRICTLY FORBIDDEN.

REQ. PER UNIT	USED ON			LD-1078
	MODEL	ASS'Y. NO.	DATE	
1	HFS-1	3100	8-17-62	



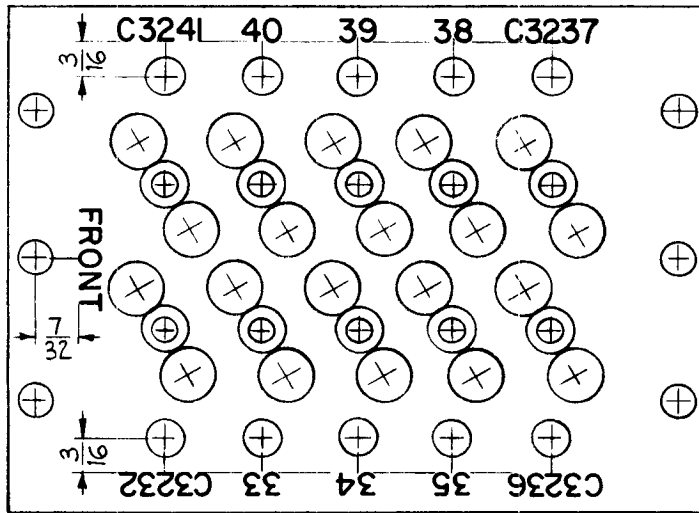
UNLESS OTHERWISE SPECIFIED ~  
 1/8 HIGH BLACK LUSTERLESS, GOTHIC LETTERING.  
 MARKING PROCESS: AS PER TMC SPECIFICATION S-727

REF. MS-2950-(1)

								REQ.	ITEM	PART NO.	J. STRUMMER	DESCRIPTION	SYMBOL	
											THE TECHNICAL MATERIEL CORP. MAMARONECK, NEW YORK			
											LETTERING, CRYSTAL PLATE			
											3100 DECK			
SYM	DESCRIPTION	DATE	CH. NO.	DRAFTS	CHECKER	ENG. APP.								
UNLESS OTHERWISE SPECIFIED: DIMENSIONS ARE IN INCHES TOLERANCES ON FRAC. ± 1/64 DEC. ± .005 ANGLES ± 1/2°		SCALE: DO NOT SCALE MAXIMUM ALLOWABLE TOLERANCES HAVE BEEN DETERMINED AND ANY DEVIATIONS WILL BE CAUSE FOR REJECTION. REMOVE ALL BURRS AND SHARP EDGES												
											DRAWN	CHECKED	FINAL APPROVAL	
													LD-1078	
											ELEC. DES. APP.	MECH. DES. APP.		

THE CONTENTS OF THIS DRAWING ARE THE EXCLUSIVE PROPERTY OF THE TECHNICAL MATERIEL CORP. ITS UNAUTHORIZED USE OR REPRODUCTION IN WHOLE OR IN PART IS STRICTLY FORBIDDEN.

REQ. PER UNIT	USED ON			LD-1079
	MODEL	ASS'Y. NO.	DATE	
1	HFS-1	3200	8-15-62	



UNLESS OTHERWISE SPECIFIED -  
 1 - 1/8 HIGH BLACK LUSTERLESS, GOTHIC LETTERING.  
 MARKING PROCESS: AS PER TMC SPECIFICATION S-721  
 2 - ALL LETTERING TO BE CENTERED ON HOLES

REF: PX-658(1).

							REQ.	ITEM	PART NO.	J. STRUMMER	DESCRIPTION	SYMBOL
										THE TECHNICAL MATERIEL CORP. MAMARONECK, NEW YORK		
										LETTERING, CRYSTALS, MTG. BOARD		
										3200 DECK		
SYM	DESCRIPTION	DATE	CH. NO.	DRAFTS	CHECKER	ENG. APP.						
UNLESS OTHERWISE SPECIFIED: DIMENSIONS ARE IN INCHES TOLERANCES ON FRAC. ± 1/64 DEC. ± 0.5 ANGLES ± 1/2°		SCALE: MAXIMUM ALLOWABLE TOLERANCES HAVE BEEN DETERMINED AND ANY DEVIATIONS WILL BE CAUSE FOR REJECTION. REMOVE ALL BURRS AND SHARP EDGES										
							TYPE & TEMPER	HEAT TREAT. SPEC.		DRAWN	CHECKED	FINAL APPROVAL
										<i>JMA</i>	<i>JMA</i>	LD-1079
							FINISH & SPEC. NO.			ELEC. DES. APP.	MECH. DES. APP.	

THE CONTENTS OF THIS DRAWING ARE THE EXCLUSIVE PROPERTY OF THE TECHNICAL MATERIEL CORP. ITS UNAUTHORIZED USE OR REPRODUCTION IN WHOLE OR IN PART IS STRICTLY FORBIDDEN.

REQ. PER UNIT

1

MODEL

HFS-1

USED ON

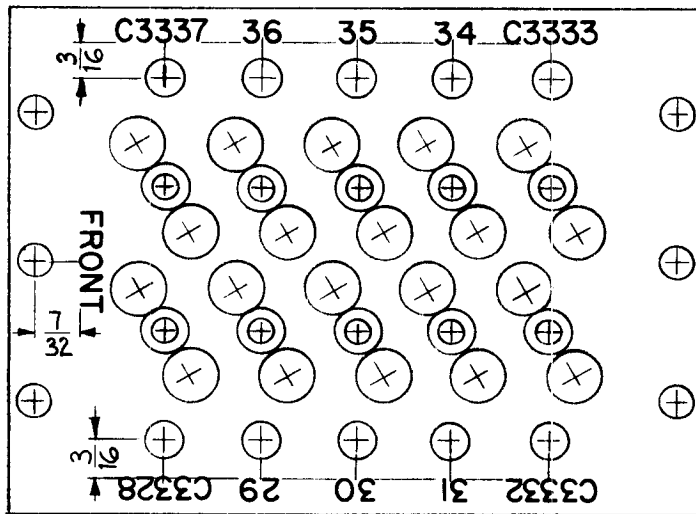
ASS'Y. NO.

3300

DATE

8-15-62

LD-1080



UNLESS OTHERWISE SPECIFIED~

1- 1/8 HIGH BLACK LUSTERLESS, GOTHIC LETTERING.

MARKING PROCESS: AS PER TMC SPECIFICATION S-727

2- ALL LETTERING TO BE CENTERED ON HOLES.

NOTICE TO CUSTOMERS REGARDING THIS DRAWING

THIS DRAWING IS THE PROPERTY OF THE TECHNICAL MATERIEL CORP. IT IS LOANED TO YOU FOR YOUR INFORMATION ONLY. IT IS NOT TO BE REPRODUCED OR COPIED IN ANY MANNER WITHOUT THE WRITTEN PERMISSION OF THE TECHNICAL MATERIEL CORP. ANY INFORMATION CONTAINED HEREIN IS UNCLASSIFIED EXCEPT WHERE SHOWN OTHERWISE.

Property of

THE TECHNICAL MATERIEL CORPORATION  
MAMARONECK, NEW YORK

REF: PX-658 (1)

REQ.	ITEM	PART NO.	J. STRUMMER DESCRIPTION			SYMBOL
			THE TECHNICAL MATERIEL CORP.			
			MAMARONECK, NEW YORK			
			LETTERING, CRYSTALS, MTG. BOARD			
			3300 DECK			
SYM	DESCRIPTION	DATE	CH. NO.	DRAFTS	CHECKER	ENG. APP.
UNLESS OTHERWISE SPECIFIED: DIMENSIONS ARE IN INCHES TOLERANCES ON FRAC. ± 1/64 DEC. ± .005 ANGLES ± 1/2°		SCALE: MAXIMUM ALLOWABLE TOLERANCES HAVE BEEN DETERMINED AND ANY DEVIATIONS WILL BE CAUSE FOR REJECTION. REMOVE ALL BURRS AND SHARP EDGES				
					W.A.F.	J.W.C.
					DRAWN	CHECKED
					J.M.A.	J.M.A.
					FINISH & SPEC. NO.	LD-1080
					ELC. DES. APP.	MCH. DES. APP.

THE CONTENTS OF THIS DRAWING ARE THE EXCLUSIVE PROPERTY OF THE TECHNICAL MATERIEL CORP. ITS UNAUTHORIZED USE OR REPRODUCTION IN WHOLE OR IN PART IS STRICTLY FORBIDDEN.

REQ. PER UNIT

1

MODEL

HFS-1

USED ON

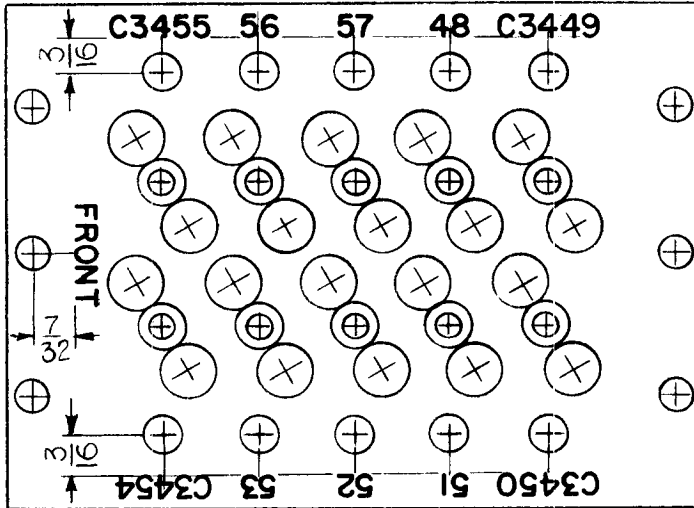
ASSY. NO.

3400

DATE

8-15-62

LD-1081



UNLESS OTHERWISE SPECIFIED~

1- 1/8 HIGH BLACK LUSTERLESS, GOTHIC LETTERING.  
MARKING PROCESS: AS PER TMC SPECIFICATION S-727

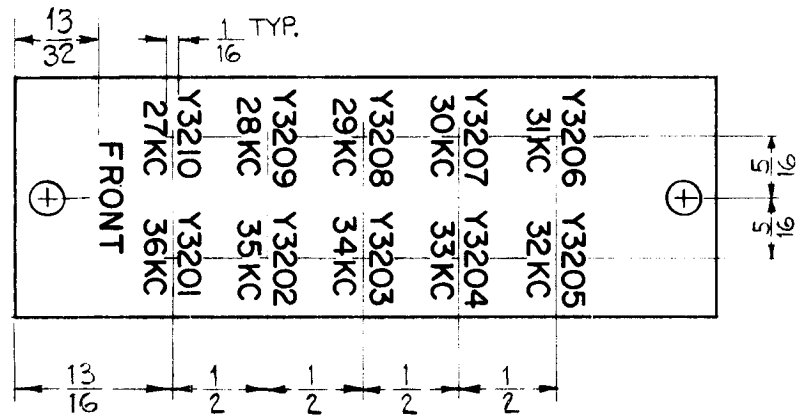
2- ALL LETTERING TO BE CENTERED ON HOLES

REF: PX-658 (1)

							REQ.	ITEM	PART NO.	J. STRUMER	DESCRIPTION	SYMBOL	
											THE TECHNICAL MATERIEL CORP. MAMARONECK, NEW YORK		
											LETTERING, CRYSTALS, MTG. BOARD		
											3400 DECK		
SYM	DESCRIPTION	DATE	CH. NO.	DRAFTS	CHECKER	ENG. APP.							
UNLESS OTHERWISE SPECIFIED: DIMENSIONS ARE IN INCHES TOLERANCES ON FRAC. ± 1/64 DEC. ± .005 ANGLES ± 1/2°		SCALE: MAXIMUM ALLOWABLE TOLERANCES HAVE BEEN DETERMINED AND ANY DEVIATIONS WILL BE CAUSE FOR REJECTION. REMOVE ALL BURRS AND SHARP EDGES											
							TYPE & TEMPER	HEATTREAT. SPEC.		DRAWN	CHECKED	FINAL APPROVAL	
										<i>JMA</i>	<i>JMA</i>	LD-1081	
							FINISH & SPEC. NO.			REC. DES. APP.	MACH. DES. APP.		

THE CONTENTS OF THIS DRAWING ARE THE EXCLUSIVE PROPERTY OF THE TECHNICAL MATERIEL CORP. ITS UNAUTHORIZED USE OR REPRODUCTION IN WHOLE OR IN PART IS STRICTLY FORBIDDEN.

REQ. PER UNIT	USED ON			LD-1082
	MODEL	ASS'Y. NO.	DATE	
1	HFS-1	3200	8-17-62	



UNLESS OTHERWISE SPECIFIED -  
 1/8 HIGH BLACK LUSTERLESS, GOTHIC LETTERING.  
 MARKING PROCESS: AS PER T M C SPECIFICATION S-727

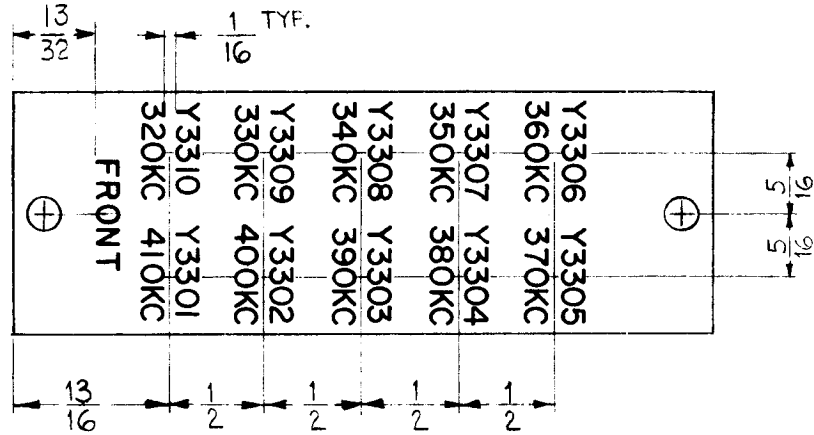
REF: MS-2950 (1)

							REQ.	ITEM	PART NO.	J. STRUMMER	DESCRIPTION	SYMBOL	
											THE TECHNICAL MATERIEL CORP. MAMARONECK, NEW YORK		
											LETTERING, CRYSTAL PLATE		
											3200 DECK		
SYM	DESCRIPTION	DATE	CH. NO.	DRAFTS	CHECKER	ENG. APP.							
UNLESS OTHERWISE SPECIFIED: DIMENSIONS ARE IN INCHES TOLERANCES ON FRAC. ± 1/64 DEC. ± .05 ANGLES ± 1/2°		SCALE: MAXIMUM ALLOWABLE TOLERANCES HAVE BEEN DETERMINED AND ANY DEVIATIONS WILL BE CAUSE FOR REJECTION. REMOVE ALL BURRS AND SHARP EDGES									W.A.F.	JDe	BP
							TYPE & TEMPER	HEATTREAT. SPEC.		DRAWN	CHECKED	FINAL APPROVAL	
										MA	MA	LD-1082	
							FINISH & SPEC. NO.			ELEC. DES. APP.	MECH. DES. APP.		

THE CONTENTS OF THIS DRAWING ARE THE EXCLUSIVE PROPERTY OF THE TECHNICAL MATERIEL CORP. ITS UNAUTHORIZED USE OR REPRODUCTION IN WHOLE OR IN PART IS STRICTLY FORBIDDEN.

REQ. PER UNIT	USED ON			LD-1083
	MODEL	ASSY. NO.	DATE	
1	HFS-1	3300	8-17-62	

UNLESS OTHERWISE SPECIFIED ~  
 1/8 HIGH BLACK LUSTERLESS, GOTHIC LETTERING.  
 MARKING PROCESS: AS PER TMC SPECIFICATION S-727



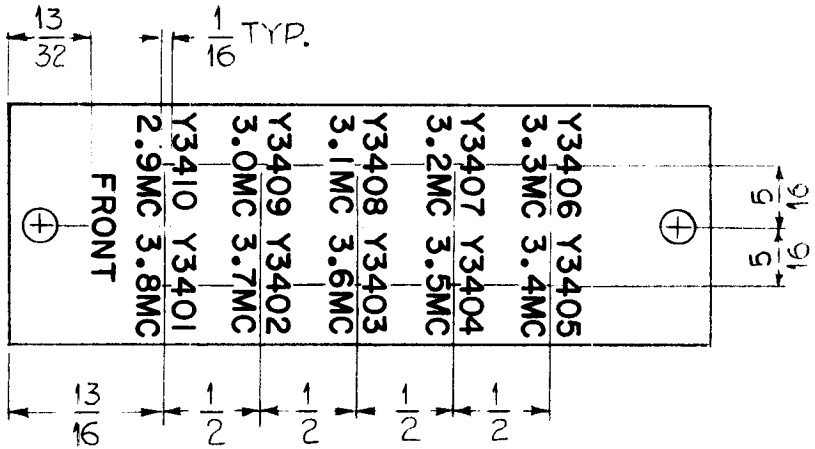
REF: MS-2950 (1).

SYM	DESCRIPTION	DATE	CH. NO.	DRAFTS	CHECKER	ENG. APP.	REQ. ITEM	PART NO.	J. STRUMMER DESCRIPTION	SYMBOL	
									THE TECHNICAL MATERIEL CORP. MAMARONECK, NEW YORK		
									LETTERING, CRYSTAL PLATE		
									3300 DECK		
UNLESS OTHERWISE SPECIFIED: DIMENSIONS ARE IN INCHES TOLERANCES ON FRAC. ± 1/64 DEC. ± .05 ANGLES ± 1/2°		SCALE: MAXIMUM ALLOWABLE TOLERANCES HAVE BEEN DETERMINED AND ANY DEVIATIONS WILL BE CAUSE FOR REJECTION. REMOVE ALL BURRS AND SHARP EDGES									
									W.A.F. J.W.D.	BP	
									DRAWN CHECKED	LD-1083	
									ELEC. DES. APP. MECH. DES. APP.		



THE CONTENTS OF THIS DRAWING ARE THE EXCLUSIVE PROPERTY OF THE TECHNICAL MATERIEL CORP. ITS UNAUTHORIZED USE OR REPRODUCTION IN WHOLE OR IN PART IS STRICTLY FORBIDDEN.

REQ. PER UNIT	USED ON			LD-1084
	MODEL	ASS'Y. NO.	DATE	
1	HFS-1	3400	8-17-62	



UNLESS OTHERWISE SPECIFIED -  
 1/8 HIGH BLACK LUSTERLESS, GOTHIC LETTERING.  
 MARKING PROCESS: AS PER TMC SPECIFICATION S-727

REF: MS-2950(1)

							REQ.	ITEM	PART NO.	J. STRUMMER	DESCRIPTION	SYMBOL	
											THE TECHNICAL MATERIEL CORP.		
											MAMARONECK, NEW YORK		
											LETTERING, CRYSTAL PLATE		
											3400 DECK		
SYM	DESCRIPTION	DATE	CH. NO.	DRAFTS	CHECKER	ENG. APP.							
UNLESS OTHERWISE SPECIFIED: DIMENSIONS ARE IN INCHES TOLERANCES ON FRAC. ± 1/64 DEC. ± .005 ANGLES ± 1/2°		SCALE: MAXIMUM ALLOWABLE TOLERANCES HAVE BEEN DETERMINED AND ANY DEVIATIONS WILL BE CAUSE FOR REJECTION. REMOVE ALL BURRS AND SHARP EDGES											
							TYPE & TEMPER	HEATTREAT. SPEC.	DRAWN	CHECKED	FINAL APPROVAL		
									<i>M.A.F.</i>	<i>J.W.</i>	<i>BP</i>		
							FINISH & SPEC. NO.	ELEC. DES. APP.	MECH. DES. APP.	LD-1084			

THE CONTENTS OF THIS DRAWING ARE THE EXCLUSIVE PROPERTY OF THE TECHNICAL MATERIEL CORP. ITS UNAUTHORIZED USE OR REPRODUCTION IN WHOLE OR IN PART IS STRICTLY FORBIDDEN.

REQ. PER UNIT

1

USED ON

MODEL

AFC-3

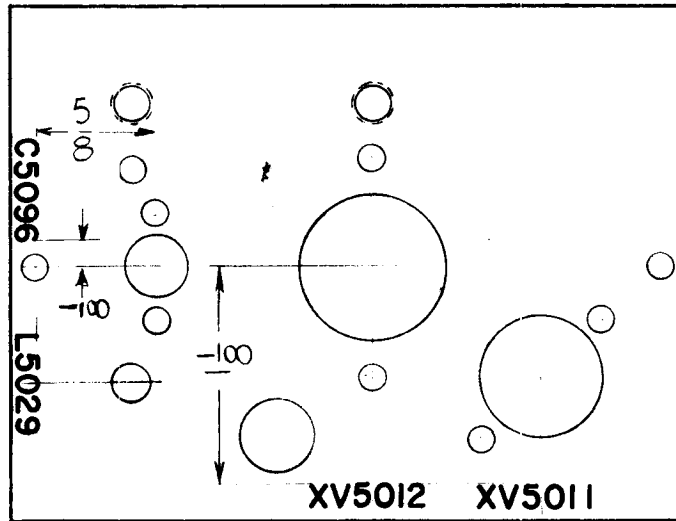
ASS'Y. NO.

A-2505

DATE

5-22-62

LD-1094



MARKING PROCESS: AS PER TMC SPECIFICATION S-727

ALL LETTERING TO BE  $\frac{1}{8}$  HIGH BLACK GOTHIC.

REF: MS-2928 (2)

REQ.	ITEM	PART NO.	WESCHLER DESCRIPTION		SYMBOL
			THE TECHNICAL MATERIEL CORP.		
			MAMARONECK, NEW YORK		
			LETTERING, OSC. CHASSIS		
			MATERIAL		
				V.R.R.	
				DRAWN	
				CHECKED	
				FINAL APPROVAL	
					LD-1094
				ELEC. DES. APP.	
				MCH. DES. APP.	

THE CONTENTS OF THIS DRAWING ARE THE EXCLUSIVE PROPERTY OF THE TECHNICAL MATERIEL CORP. ITS UNAUTHORIZED USE OR REPRODUCTION IN WHOLE OR IN PART IS STRICTLY FORBIDDEN.

REQ. PER UNIT

USED ON

MODEL

ASS'Y. NO.

DATE

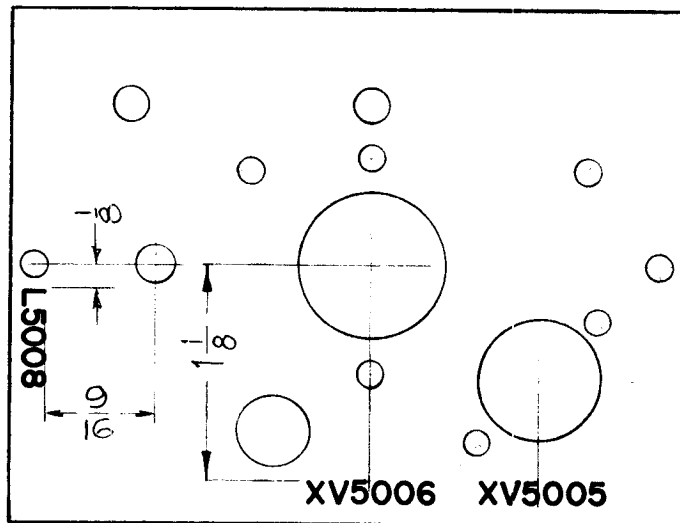
LD-1095

1

AFC-3

A-2504

7-26-62



ALL LETTERING TO BE 1/8 HIGH BLACK LUSTERLESS GOTHIC

MARKING PROCESS: AS PER TMC SPECIFICATION 3 727

REF: MS-2927 (2)

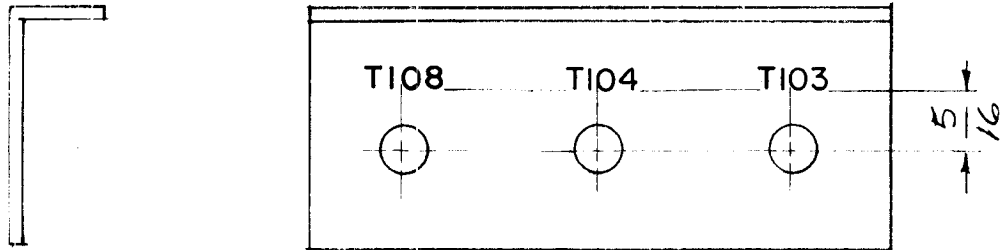
REQ.	ITEM	PART NO.	WESCHLER DESCRIPTION		SYMBOL
			THE TECHNICAL MATERIEL CORP.		
			MAMARONECK, NEW YORK		
			LETTERING, OSC. CHASSIS		
			MATERIAL		
			V.R.R.	<i>File</i>	<i>BP</i>
			TYPE & TEMPER	HEAT TREAT. SPEC.	DRAWN
					CHECKED
					FINAL APPROVAL
					LD-1095
			FINISH & SPEC. NO.	ELEC. DES. APP.	MECH. DES. APP.

UNLESS OTHERWISE SPECIFIED:  
DIMENSIONS ARE IN INCHES  
TOLERANCES ON  
FRAC. ± 1/64 DEC. ± .005 ANGLES ± 1/2°

SCALE:  
MAXIMUM ALLOWABLE TOLERANCES HAVE BEEN DETERMINED AND ANY DEVIATIONS WILL BE CAUSE FOR REJECTION.  
REMOVE ALL BURRS AND SHARP EDGES

THE CONTENTS OF THIS DRAWING ARE THE EXCLUSIVE PROPERTY OF THE TECHNICAL MATERIEL CORP. ITS UNAUTHORIZED USE OR REPRODUCTION IN WHOLE OR IN PART IS STRICTLY FORBIDDEN.

REQ. PER UNIT	USED ON			LD-1097
	MODEL	ASS'Y. NO.	DATE	
1	GPR-92		5-31-62	



~ UNLESS OTHERWISE SPECIFIED ~  
 ALL LETTERING TO BE 1/8 HIGH BLACK GOTHIC  
 ALL LETTERING TO BE CENTERED ON HOLES.  
 MARKING PROCESS: AS PER TMC SPECIFICATION S-727



REF: MS-2233

							REQ.	ITEM	PART NO.	STRUMER DESCRIPTION	SYMBOL	
										THE TECHNICAL MATERIEL CORP. MAMARONECK, NEW YORK		
										LETTERING, BRACKET		
										R.F. COIL MOUNTING		
SYM	DESCRIPTION	DATE	CH. NO.	DRAFTS	CHECKER	ENG. APP.				u.s.	BP	
UNLESS OTHERWISE SPECIFIED: DIMENSIONS ARE IN INCHES		SCALE:										
TOLERANCES ON		MAXIMUM ALLOWABLE TOLERANCES HAVE BEEN DETERMINED AND ANY DEVIATIONS WILL BE CAUSE FOR REJECTION.										
FRAC. ± 1/64 DEC. ± .005 ANGLES ± 1/2°		REMOVE ALL BURRS AND SHARP EDGES										
							TYPE & TEMPER	HEATTREAT. SPEC.	DRAWN	CHECKED	FINAL APPROVAL	
											LD-1097	
							FINISH & SPEC. NO.		ELEC. DES. APP.	MECH. DES. APP.		

THE CONTENTS OF THIS DRAWING ARE THE EXCLUSIVE PROPERTY OF THE TECHNICAL MATERIEL CORP. ITS UNAUTHORIZED USE OR REPRODUCTION IN WHOLE OR IN PART IS STRICTLY FORBIDDEN.

REQ. PER UNIT

1 GPR-92

USED ON

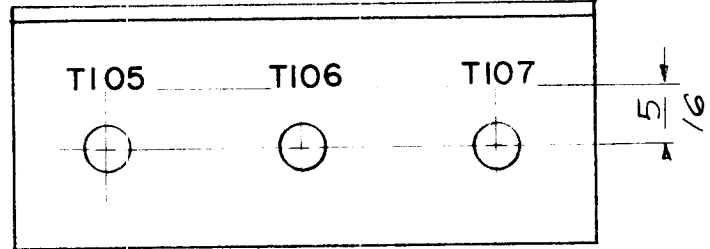
MODEL

ASS'Y. NO.

DATE

6-1-62

LD-1098



~UNLESS OTHERWISE SPECIFIED~  
 ALL LETTERING TO BE CENTERED ON HOLES.  
 ALL LETTERING TO BE 1/8 HIGH BLACK GOTHIC.

MARKING PROCESS: AS PER TMC SPECIFICATION S-727



REF: MS-2233

REQ.	ITEM	PART NO.	STRUMER DESCRIPTION		SYMBOL
			THE TECHNICAL MATERIEL CORP. MAMARONECK, NEW YORK		
			LETTERING, BRACKET		
			R.F. COIL MOUNTING		
			W. S.	HP	BP
			DRAWN	CHECKED	FINAL APPROVAL
			JMA	MP	LD-1098
			FINISH & SPEC. NO.		
			ELEC. DES. APP.		
			MECH. DES. APP.		

UNLESS OTHERWISE SPECIFIED:  
 DIMENSIONS ARE IN INCHES  
 TOLERANCES ON  
 FRAC. ± 1/64 DEC. ± .005 ANGLES ± 1/2°

SCALE:  
 MAXIMUM ALLOWABLE TOLERANCES HAVE BEEN DETERMINED AND ANY DEVIATIONS WILL BE CAUSE FOR REJECTION.  
 REMOVE ALL BURRS AND SHARP EDGES