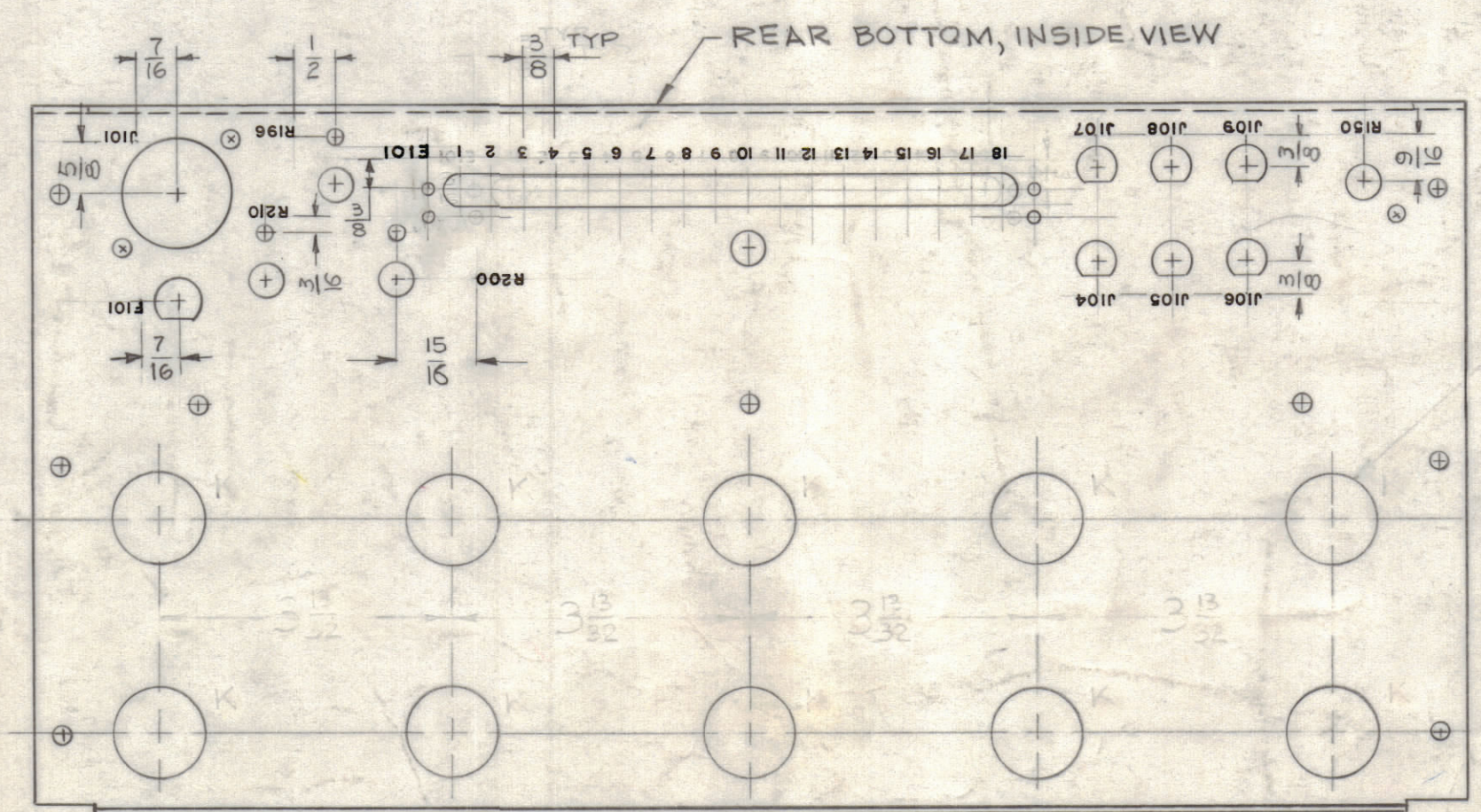
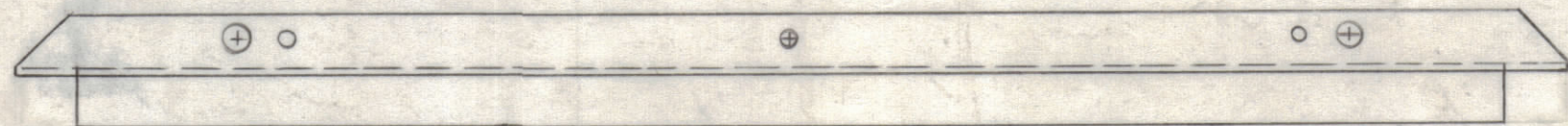
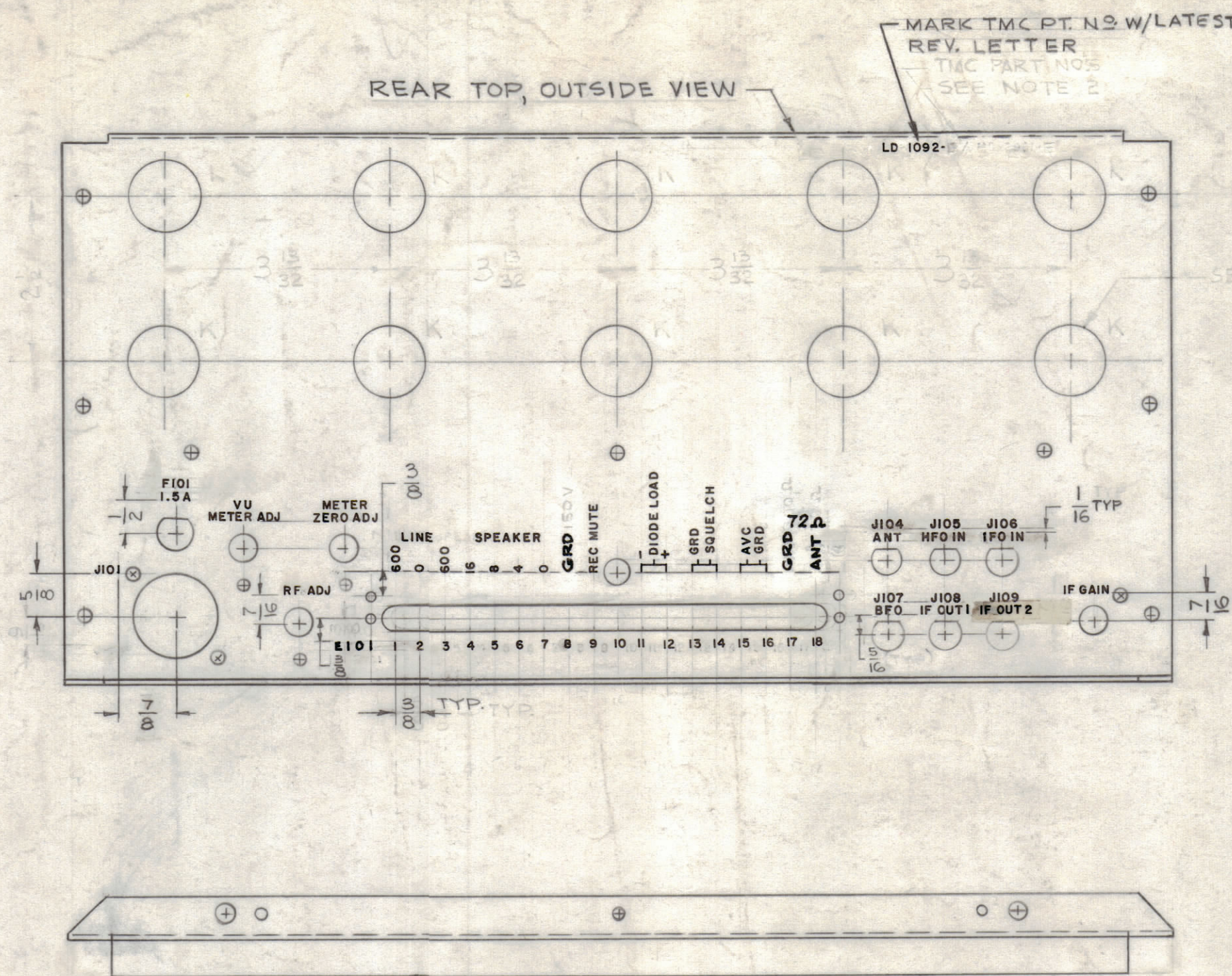


REVISIONS							
ZONE	SYM	DESCRIPTION	DATE	E.M.N. NO.	DRAFT	CHKD	APPD
~	A	REVISED & REDRAWN, WERE 2 SHEETS SIZE B	6-19-63	9390	G.D.L.	JCB	JCB
~	B	J106-1FO IN WAS HFO IN, J109-1FO OUT 2 WAS 1FO IN	7-11-63	9901	HAB	JCB	JCB
~	C	UPDATED EXTENSIVE CHGS SEE EMN 10798	7/24/64	10798	SA	JCB	JCB
~	D	10 HOLES ADDED	2-25-64	10937	W.B.	JCB	M.P.
F4	E	J109 IF OUT 2 WAS J109 1FO OUT 2	5-26-64	11426	A.M.	JCB	JCB
F5, F4	F	SW+150 WAS GRD; TERM 17, 18 E101 WAS GRD, ANT. T2.2; MODEL WAS GPR-92.	1/27/66	15663	JL	JCB	JCB
	G	UPDATED E101 OUTSIDE VIEW (TERM. 8, 17, 18)	3-21-66	15977	HCA	JCB	JCB



NOTE -
 UNLESS OTHERWISE SPECIFIED:
 1) - MARKING PROCESS: AS PER TMC SPECIFICATION S-727
 2) - LETTERING: 1/8 HIGH, BLACK GOTHIC AS SHOWN
 3) - SPACING WILL BE 1/16 BETWEEN LETTER GROUPS
 4) - ALL LETTERING TO BE CENTERED ABOUT CENTER LINES OF HOLES APPROX. AS SHOWN
 5) - HOLES "K" 1/8 DIA. SEE EMN 10937

REF: MS-2961-B

REQ'D.	ITEM	PART NUMBER	DESCRIPTION	SYMBOL
STRUMER LIST OF MATERIAL				
MATERIAL		THE TECHNICAL MATERIEL CORP. MAMARONECK, NEW YORK		
FINISH		TITLE LETTERING, REAR PANEL		
UNLESS OTHERWISE SPECIFIED DIMENSIONS ARE IN INCHES AND INCLUDE CHEMICALLY APPLIED OR PLATED FINISHES		DRAWN G.D.L.	DATE 6-19-63	FINAL APPROVAL
SCALE 1:2		CHECKED	DATE 7-5-63	DATE 7.8.63
DECIMALS .X ± .05 .XX ± .01 .XXX ± .005		ELECT. DES.	DATE 7-5-63	DATE 7-5-63
FRACTIONS ± 1/64 ANGLES ± 0° 30'		MECH. DES.	DATE 7-5-63	DATE 7-5-63
TOLERANCES		SHEET		REV. LTR.

Q'TY./UNIT	MODEL USED ON	ASS'Y. NO.
1	GPR-92A	153328
SCALE	CODE	
1:2		

THE CONTENTS OF THIS DRAWING ARE THE EXCLUSIVE PROPERTY OF THE TECHNICAL MATERIEL CORP. ITS UNAUTHORIZED USE OR REPRODUCTION IN WHOLE OR IN PART IS STRICTLY FORBIDDEN.

LD-1092 G