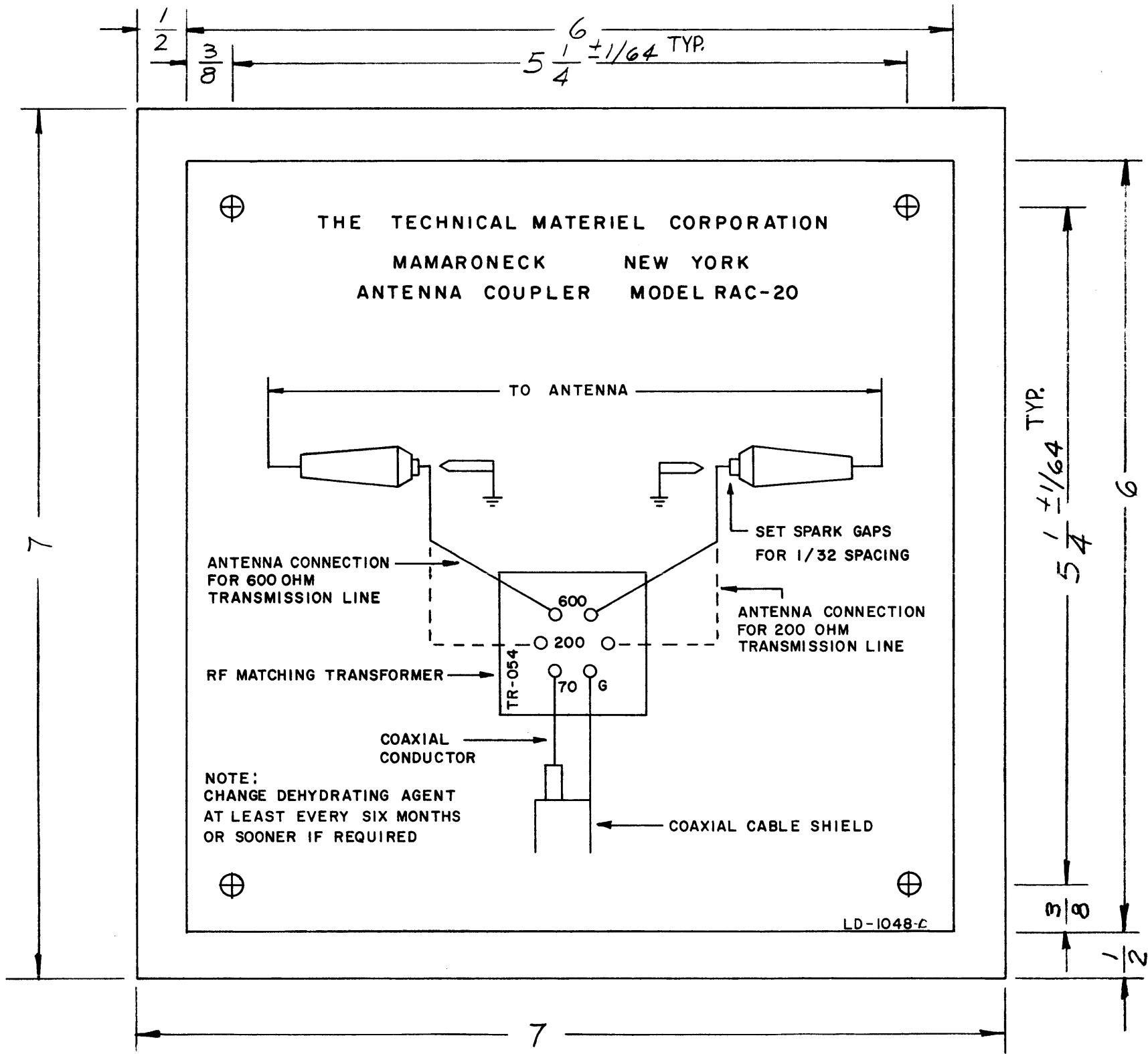


LD-1048 C

THE CONTENTS OF THIS DRAWING ARE THE EXCLUSIVE PROPERTY OF THE TECHNICAL MATERIEL CORP. ITS UNAUTHORIZED USE OR REPRODUCTION IN WHOLE OR IN PART IS STRICTLY FORBIDDEN.



7/64 DIA. 4 HOLES REQ'D.

NOTE:
 1- PRINTED DIRECTLY ON FACE OF PLASTIC.
 2- MATERIAL: POLISHED WHITE OPAQUE VINYL PLASTIC

OBSOLETE
 REPLACED BY LD-915
 10-4-62 *JS*

C	FINISH DELETED MATERIAL CLARIFIED	2-1-63	8168	<i>[Signature]</i>	<i>[Signature]</i>	<i>[Signature]</i>
SYM	DESCRIPTION	DATE	CH. NO.	DRAFTS	CHECKER	ENG. APP.
UNLESS OTHERWISE SPECIFIED:		SCALE:				
DIMENSIONS ARE IN INCHES		MAXIMUM ALLOWABLE TOLERANCES HAVE BEEN DETERMINED AND ANY DEVIATIONS WILL BE CAUSE FOR REJECTION.				
TOLERANCES ON FRACTIONS ± 1/64 DECIMALS ± .005 ANGLES ± 1/20		REMOVE ALL BURRS AND SHARP EDGES				
		1	RAC-20			1-8-62
		REQ. PER UNIT	MODEL	SECTION	ASS'Y. NO.	DATE
		USED ON				

REQ.	ITEM	PART NO.	DESCRIPTION		SYMBOL
	.015		THE TECHNICAL MATERIEL CORP. MAMARONECK, NEW YORK		
	SEE NOTE #2		LETTERING, SCHEMATIC DIAGRAM		
			RAC-20		
			ab	RUIZZO	<i>[Signature]</i>
			TYPE & TEMPER	HEAT TREAT. SPEC.	DRAWN
					CHECKED
					FINAL APPROVAL
			CG		
			FINISH & SPEC. NO.	ELEC. DES. APP.	MECH. DES. APP.
					LD-1048 C