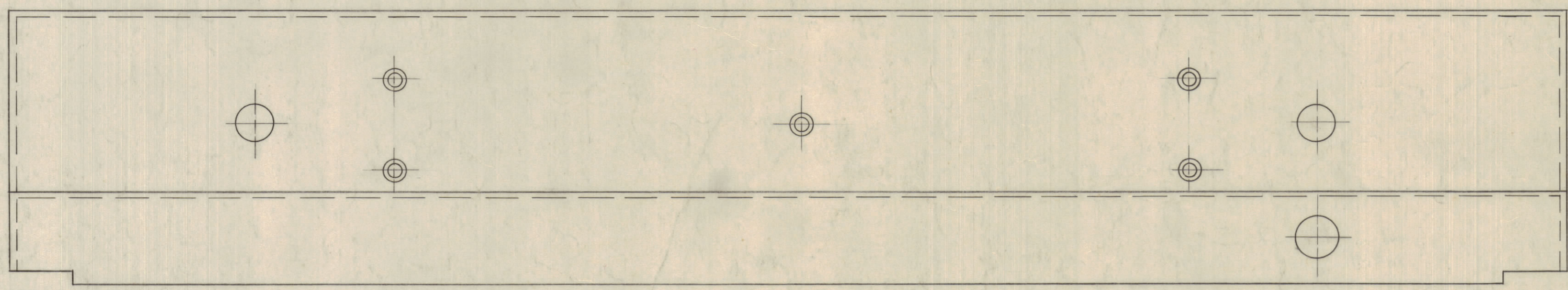
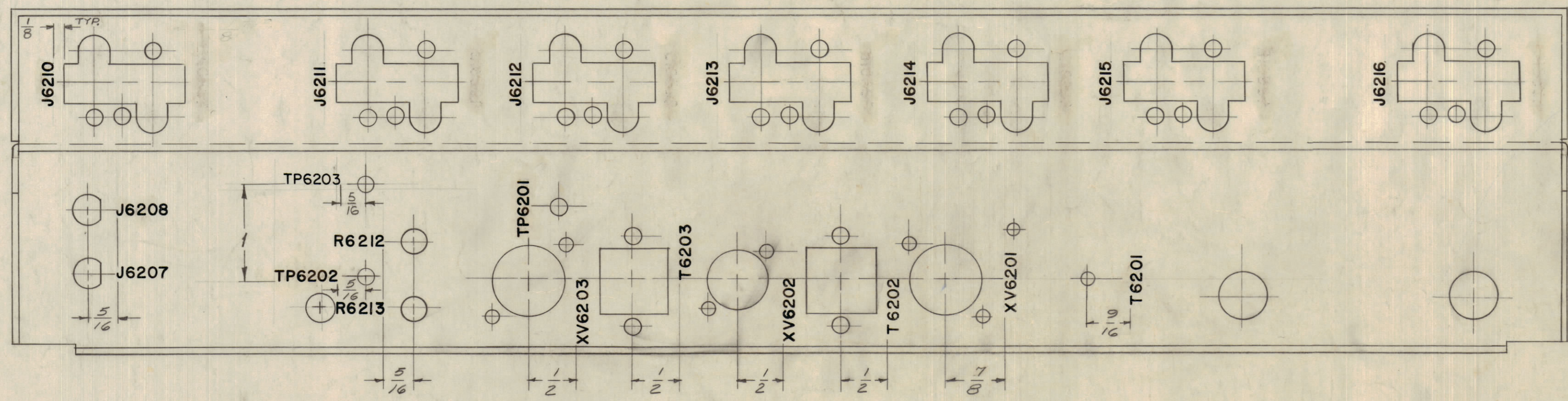


EXTERIOR VIEW (TOP)



FRONT VIEW



INTERIOR VIEW (BOTTOM)

NOTES: MARKING PROCESS: AS PER TMC SPECIFICATION S-727
 LETTERING TO BE 1/8 HIGH, BLACK LUSTERLESS, GOTHIC
 ALL LETTER GROUPS TO BE CENTERED ON HOLES OR
 INDICATING LINES, UNLESS OTHERWISE SPECIFIED

NOTICE TO PERSONS RECEIVING THIS DRAWING
 THE TECHNICAL MATERIEL CORPORATION claims
 proprietary right in the material disclosed herein.
 This drawing is issued in confidence for engineering
 information only and may not be reproduced or used
 to manufacture anything shown hereon without per-
 mission from THE TECHNICAL MATERIEL CORPORA-
 TION to the user. This drawing is loaned for mutual
 assistance and is subject to recall at any time.
 Property of:
 THE TECHNICAL MATERIEL CORPORATION
 MAMARONECK, NEW YORK

REF: MS-2721 (A)

D	F8	ADDED (2) 3/32 HOLES AS PER MS-2721	2-10-64	10823	AM	TK	WMB
C	F8	TP6203 ADDED - TOP & BOTTOM VIEWS PICTORIAL CORRECTED TO AGREE WITH MS-2721	4-13-63	10323		OT	WMB
B	F8	ON TOP VIEW J6210 WAS 6201	5-1-63	8904		WMB	WMB
A		(1) HOLE ADDED, SEE REF. REVISION "A"	1-14-63	8029		WMB	WMB
SYM	ZONE	DESCRIPTION	DATE	CH. NO.	DRAFTS	CHECKER	ENG. APP.
		UNLESS OTHERWISE SPECIFIED:	SCALE APPROX.				
		DIMENSIONS ARE IN INCHES	MAXIMUM ALLOWABLE TOLERANCES HAVE BEEN DETERMINED AND ANY DEVIATIONS WILL BE CAUSE FOR REJECTION. REMOVE ALL BURRS & SHARP EDGES				
		TOLERANCES ON FRACTIONS ± 1/64	DECIMALS ± .005		ANGLES ± 1/2°		

1	HFI-1			7-24-62
REQ. PER UNIT	MODEL	SECTION	ASSY. NO.	DATE
USED ON				

REQ. ITEM	PART NO.	M. GELLMAN	DESCRIPTION	SYMBOL
STOCK SIZE		THE TECHNICAL MATERIEL CORP. MAMARONECK, NEW YORK		
MATERIAL		LETTERING, CONVERTER CHASSIS		
TYPE & TEMPER		w.s. WMB		
HEAT TREAT. SPEC.		DRAWN CHECKED FINAL APPROVAL		
FINISH & SPEC. NO.		W. S. R.P.S. LD-1043 D		
ELEC. DES. APP.		MECH. DES. APP.		SHEET OF

LD-1043 D