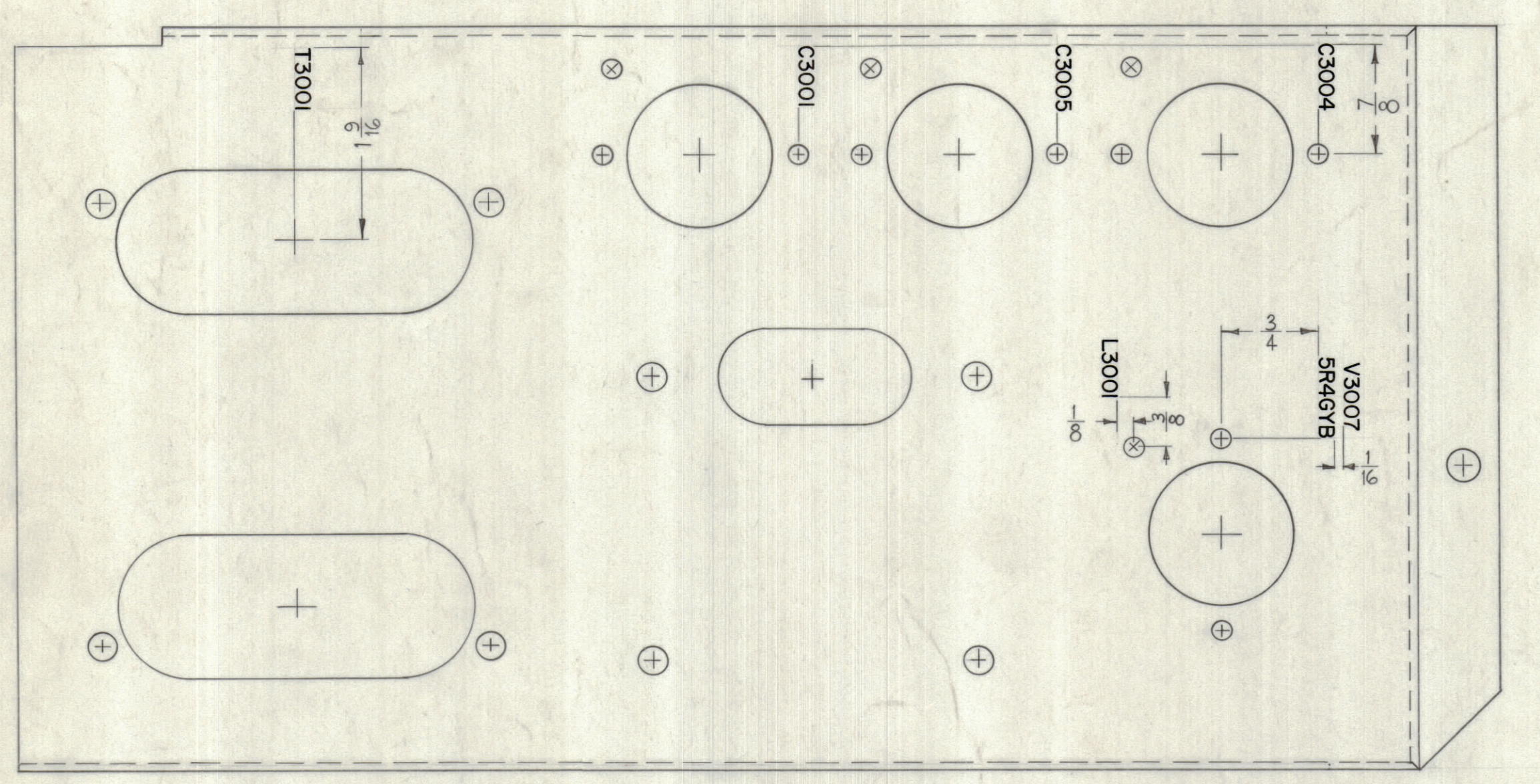
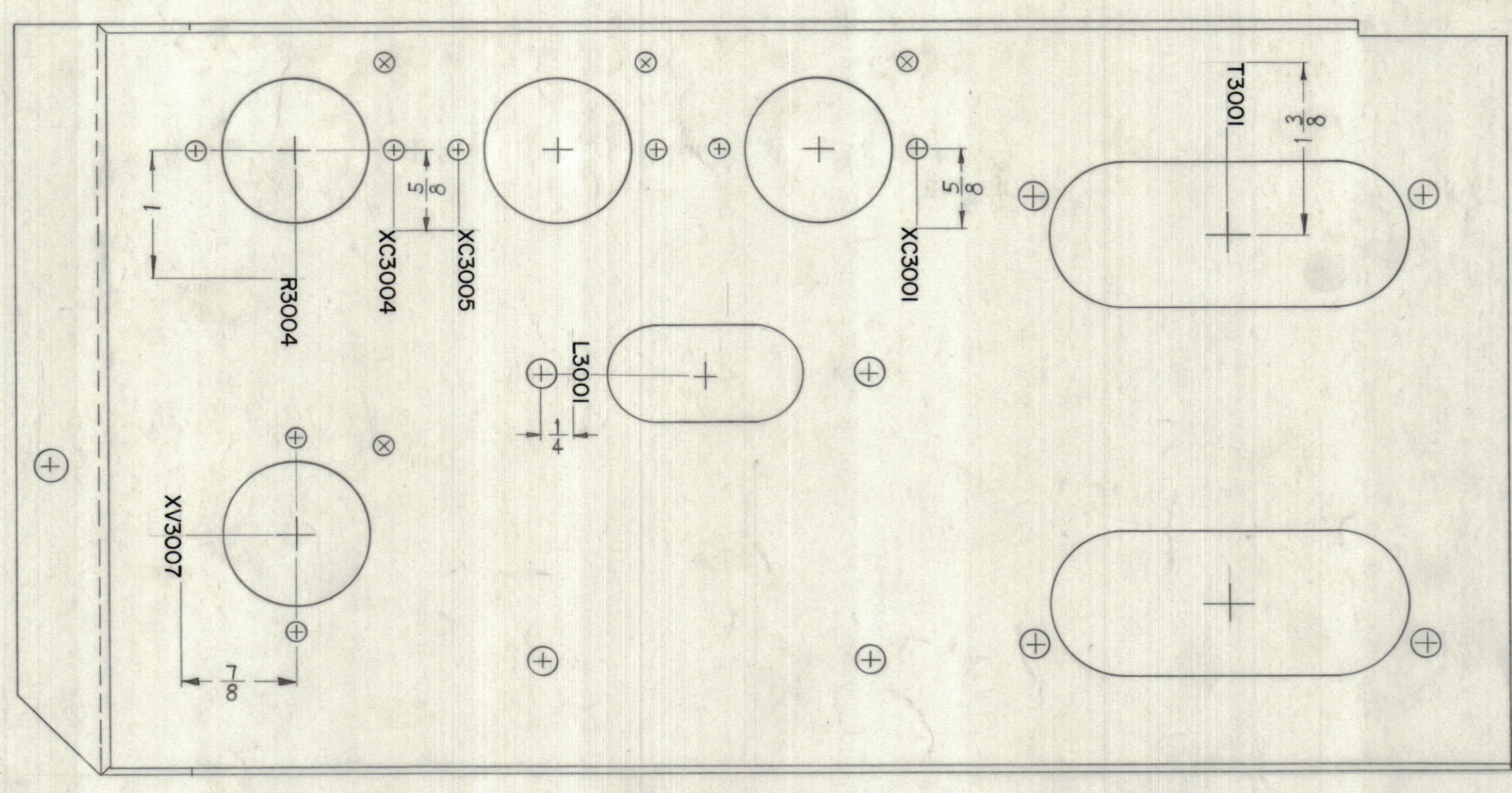
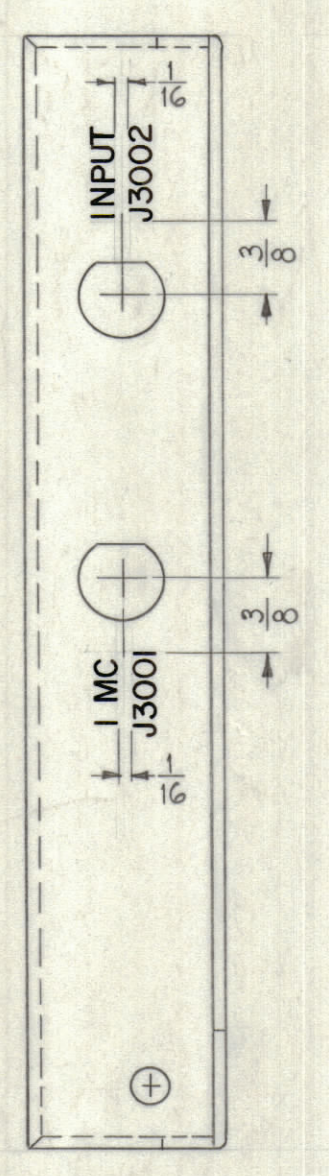


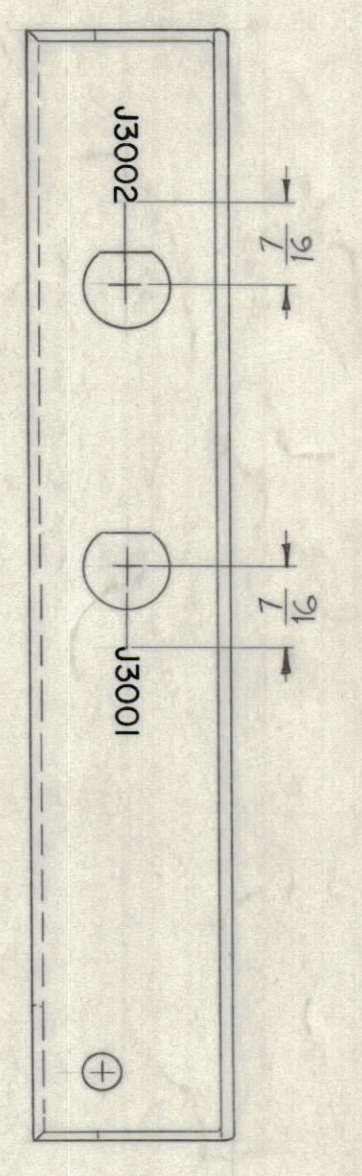
NOTICE TO PERSONS RECEIVING THIS DRAWING
 THE TECHNICAL MATERIEL CORPORATION claims proprietary right in the material disclosed herein. This drawing is issued in confidence for engineering information only and may not be reproduced or used to manufacture anything shown herein without permission from THE TECHNICAL MATERIEL CORPORATION to the user. This drawing is loaned for mutual assistance and is subject to recall at any time.
 Property of:
 THE TECHNICAL MATERIEL CORPORATION
 MAMARONECK, NEW YORK



TOP VIEW



BOTTOM VIEW



UNLESS OTHERWISE SPECIFIED ~
 1- ALL LETTERING TO BE 1/8 HIGH BLACK GOTHIC, SILK SCREEN OR EQUIVALENT AS SHOWN.
 2- ALL LETTER GROUPS TO BE CENTERED ON HOLES OR INDICATING LINES.

REF: MS-2794 (8).

SYM	ZONE	DESCRIPTION	DATE	CH. NO.	DRAFTS	CHECKER	ENG. APP.
UNLESS OTHERWISE SPECIFIED:			SCALE				
DIMENSIONS ARE IN INCHES			MAXIMUM ALLOWABLE TOLERANCES HAVE BEEN DETERMINED AND ANY DEVIATIONS WILL BE CAUSE FOR REJECTION. REMOVE ALL BURRS & SHARP EDGES				
TOLERANCES ON FRACTIONS ± 1/64			DECIMALS ± .005		ANGLES ± 1/2°		

REQ. ITEM	PART NO.	DESCRIPTION	SYMBOL
THE TECHNICAL MATERIEL CORP. MAMARONECK, NEW YORK			
LETTERING, POWER SUPPLY CHASSIS (TOP & BOTTOM)			
1	LFA-2		12-27-61
REQ. PER UNIT	MODEL	SECTION	ASS'Y. NO.
USED ON			
FINISH & SPEC. NO.		ELEC. DES. APP.	MECH. DES. APP.
SHEET		OF	

LD-1017