

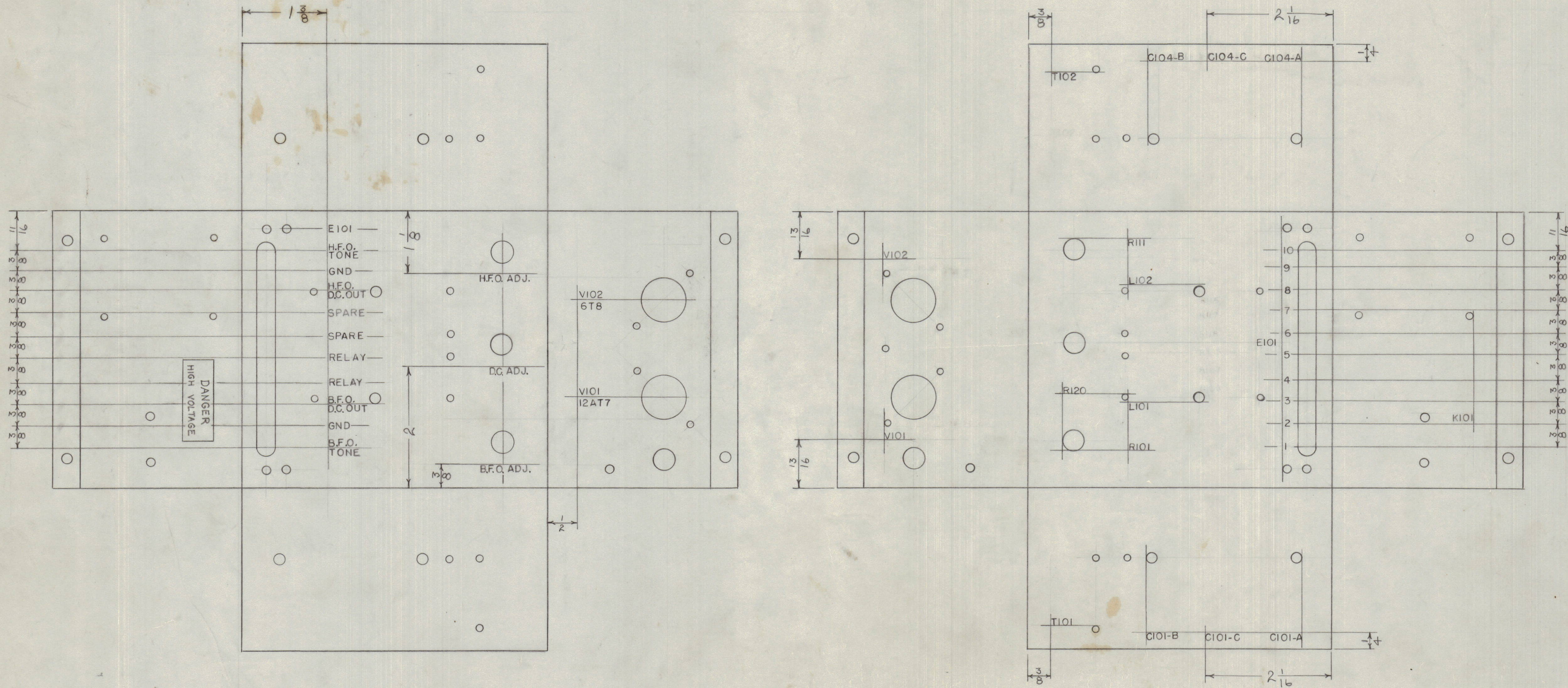
IF IT IS FOUND DESIRABLE TO CHANGE ANY TOLERANCE OR OTHER DETAIL SPECIFIED ON THIS DRAWING NOTIFY THE PURCHASER PROMPTLY.
 MAXIMUM ALLOWABLE TOLERANCES HAVE BEEN DETERMINED AND DEVIATIONS WILL BE CAUSE FOR REJECTION. REMOVE ALL BURRS AND SHARP EDGES

RELEASED

NOTICE TO PERSONS RECEIVING THIS DRAWING

THE TECHNICAL MATERIEL CORPORATION claims proprietary right in the material disclosed herein. This drawing is issued in confidence for engineering information only and may not be reproduced or used to manufacture anything shown hereon without permission from THE TECHNICAL MATERIEL CORPORATION to the user. This drawing is loaned for mutual assistance and is subject to recall at any time.

Property of:
 THE TECHNICAL MATERIEL CORPORATION
 MAMARONECK, NEW YORK



NOTE
 ALL LETTERS AND NUMERALS TO BE $\frac{1}{8}$ HIGH, BLACK,
 COAT WITH S113 FUNGUS RESISTANT VARNISH.

REF. DWG. FP-110 CHASSIS

A	DANGER H.V. ADDED	7/53	1	W.D.	P.M.	C.P.	
ISSUE	ITEM	CHANGED FROM	DATE	CN. NO.	DRAFTS	CHECKER	ENG. APP.
TOLERANCES		SCALE:					
ALL OTHERS	DEC. DIM. \pm	DRILL, PUNCH, COMMERCIAL STOCK					
	FRAC. DIM. \pm	SIZES AND MANUFACTURERS					
	ANGULAR DIM. \pm	TOLERANCES ARE NOT INCLUDED.					

AMD-2	A-736	4-22-54	
AMD-1	A-205	12-1-52	
MODEL	PROJECT NO.	ABS'Y. NO.	DATE
USED ON			

REQ. ITEM	PART NO.	DESCRIPTION	SYMBOL
—	—	THE TECHNICAL MATERIEL CORP.	—
—	—	MAMARONECK, NEW YORK	—
—	—	CHASSIS LETTERING	—
—	—	WEIGHT PER PC.	—
—	—	TYPE & TEMPER.	—
—	—	DRAWN	—
—	—	ELEC. DES. APP.	—
—	—	MECH. DES. APP.	—
—	—	CHECKED	—
—	—	FINAL APPROVAL	—
—	—	FINISH & SPEC. NO.	—

LD-122 A

LD-122 A