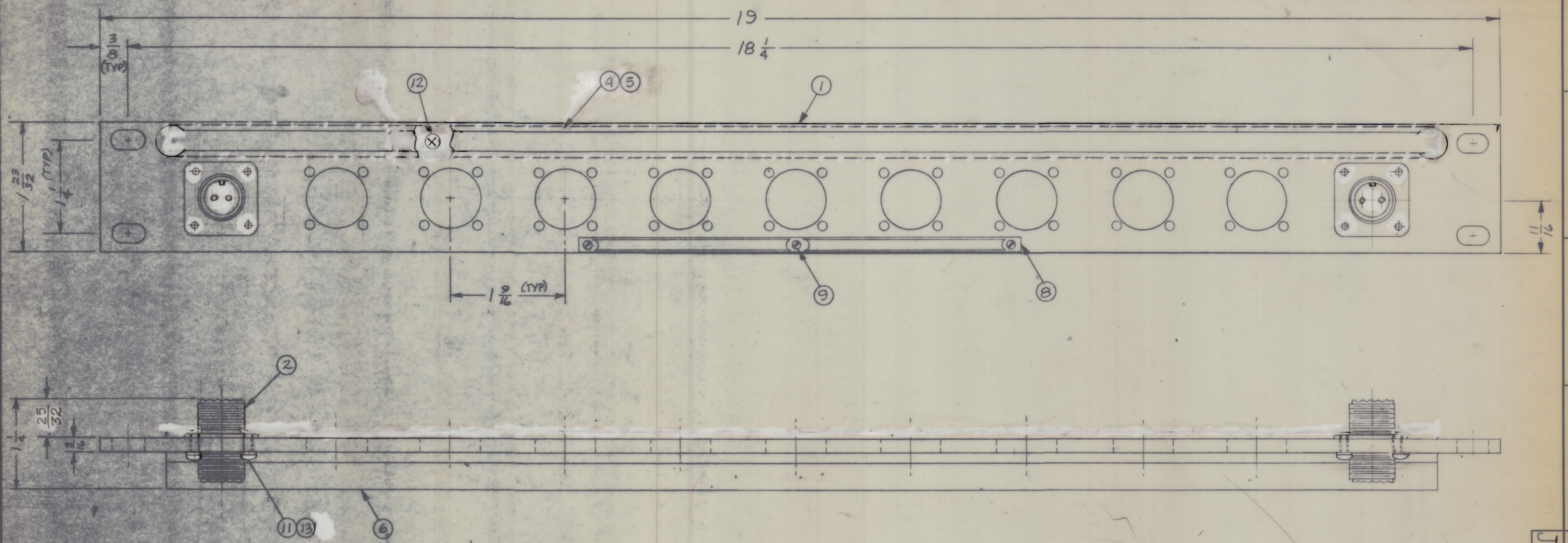


REVISIONS							
ZONE	SYM	DESCRIPTION	DATE	E.M.N. NO.	DRAFT	CHKD	APPR.
B		ORIG. RELEASE FOR PRODUCTION	1-11-68		R.G.		JHE
A		DEL. ITEM 3, 7 & 10 - PICT. UPDATED		22047	CDL		



REQ'D.	ITEM	PART NUMBER	DESCRIPTION	SYMBOL
X	15	S-721	TEST PROCEDURE	
	14			
44	13	LWE 04 MRN	WASHER, LOCK, EXTERNAL	
6	12	SCFP0632BN5	SCREW, MACHINE	
44	11	SCBP0440BN9	SCREW, MACHINE	
	10			
3	9	SFB0256SN3	SCREW, THREAD CUTTING	
1	8	NP-878	NAMEPLATE, IDENTIFICATION	
	7			
1	6	PM-486	BRACE, PANEL	
1	5	PX 396-17	GUARD TAB	
1	4	PR101-17	TAB, PAPER	
	3			
11	2	JJ-339	CONNECTOR, RECEPTACLE	
1	1	MS-1233	MACHINING, FRONT PANEL	

MATERIAL				LIST OF MATERIAL			
ALUMINUM		THE TECHNICAL MATERIEL CORP. MAMARONECK, NEW YORK		TMC SMOOTH GRAY SEMI-GLOSS ENAMEL		TITLE JACK, PATCH PANEL UHF (TWIN) TO UHF (TWIN)	
UNLESS OTHERWISE SPECIFIED DIMENSIONS ARE IN INCHES AND INCLUDE CHEMICALLY APPLIED OR PLATED FINISHES		DRAWN <i>AM</i> DATE 12-11-67		ELECT. DES. DATE 12-11-67		FINAL APPROVAL <i>SRM</i> DATE 1-8-68	
DECIMALS .X ± .05 .XX ± .01 .XXX ± .005		FRACTIONS ± 1/64 ANGLES ± 0° 30'		MECH. <i>AM</i> DATE 1-11-68		SHEET 1	

JPP-PA-125		
Q'TY./UNIT	MODEL USED ON	ASS'Y. NO.
SCALE	CODE	

NOTES
THE CONTENTS OF THIS DRAWING ARE THE EXCLUSIVE PROPERTY OF THE TECHNICAL MATERIEL CORP. ITS UNAUTHORIZED USE OR REPRODUCTION IN WHOLE OR IN PART IS STRICTLY FORBIDDEN.

JPP-PA-125 Δ

JPP-PA-125 Δ
REV. LTR.