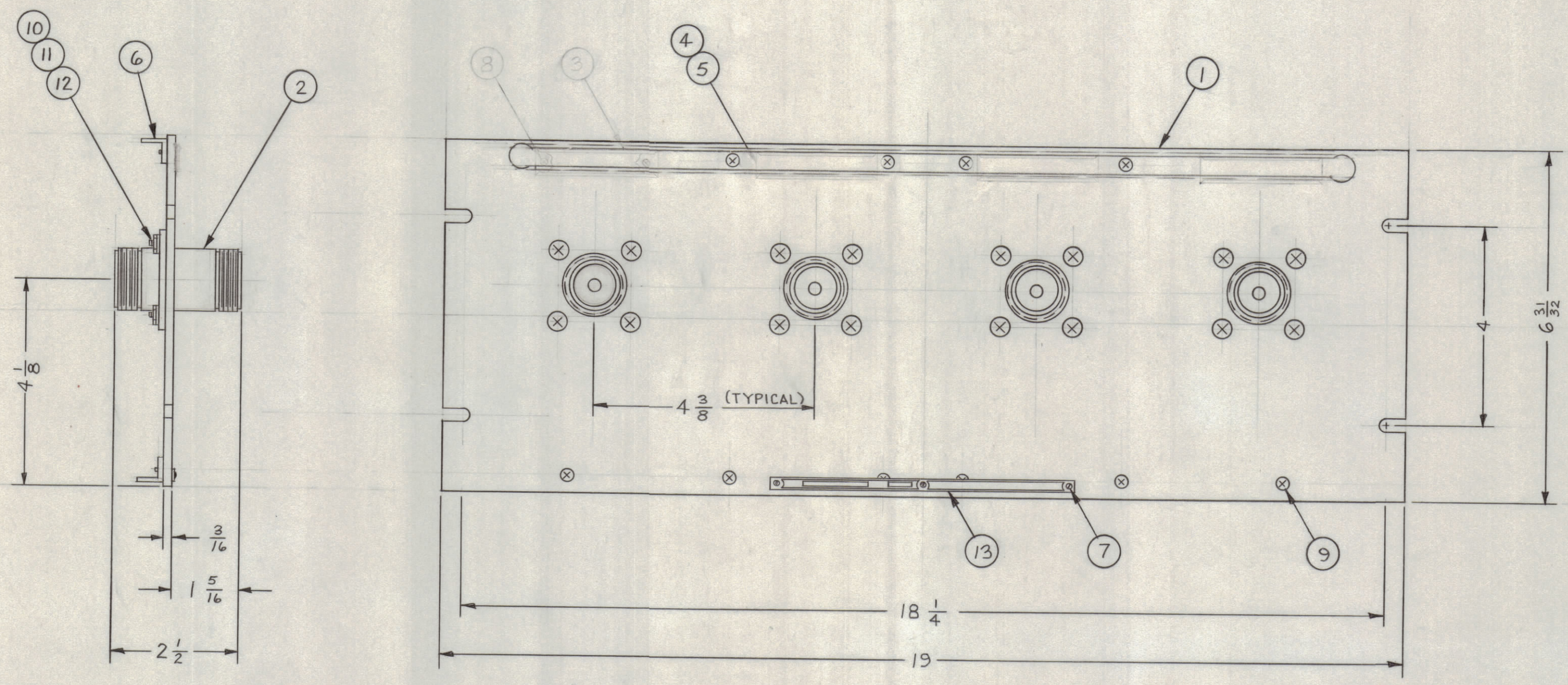


REVISIONS							
ZONE	SYM	DESCRIPTION	DATE	E.M.N. NO.	DRAFT	CHKD	APPD
	A	ITEM 3 MS 2669 ITEM 8 SCFP032BN9 4DEL. PICTORIAL UPDATED	5-84	22056	60-1		



JPP-9D9X4

Q'TY./UNIT	MODEL USED ON	ASS'Y. NO.
1	JPP-9D9X4	

REQ'D.	ITEM	PART NUMBER	DESCRIPTION	SYMBOL
X	14	S-721	TEST PROCEDURE	
1	13	NP-414	NAMEPLATE IDENTIFICATION	
16	12	NTH1032BN12	NUT, HEXAGONAL	
16	11	LWE10MRN	WASHER LOCK EXTERNAL	
16	10	SCFP032BN9	SCREW, MACHINE	
12	9	SCFP0632BN5	SCREW, MACHINE	
	8	SCFP032BN4	SCREW, MACHINE	
3	7	SFBO256SN3	SCREW, THREAD CUTTING	
2	6	PM-490	BRACE, PANEL	
4	5	PX-396-17	GUARD, TAB	
4	4	PR-101-17	TAB, PAPER	
	3	MS-2669	HEADER, CAB	
4	2	JJ-220	ADAPTOR, CONNECTOR	
1	1	MS-2934	MACHINING, FRONT PANEL	

MATERIAL		LIST OF MATERIAL	
ALUMINUM		THE TECHNICAL MATERIEL CORP. MAMARONECK, NEW YORK	
FINISH TMC SMOOTH GRAY SEMI-GLOSS ENAMEL		TITLE PATCH PANEL, JACK LC TO LC	
UNLESS OTHERWISE SPECIFIED DIMENSIONS ARE IN INCHES AND INCLUDE CHEMICALLY APPLIED OR PLATED FINISHES		DRAWN M.J. TANTILLO	DATE 9-17-62
DECIMALS .X ± .05 .XX ± .01 .XXX ± .005		CHECKED JTB	DATE 3-25-62
FRACTIONS ± 1/64 ANGLES ± 0° 30'		ELECT. DES. JTB	DATE 9/25/62
TOLERANCES		MECH. DES. JTB	DATE 9/25/62

NOTES

THE CONTENTS OF THIS DRAWING ARE THE EXCLUSIVE PROPERTY OF THE TECHNICAL MATERIEL CORP. ITS UNAUTHORIZED USE OR REPRODUCTION IN WHOLE OR IN PART IS STRICTLY FORBIDDEN.

NOTICE TO PERSONS RECEIVING THIS DRAWING

THE TECHNICAL MATERIEL CORPORATION claims proprietary right in the material disclosed hereon. This drawing is issued in confidence for engineering information only and may not be reproduced or used to manufacture anything shown hereon without permission from THE TECHNICAL MATERIEL CORPORATION to the user. This drawing is loaned for mutual assistance and is subject to recall at any time.

Property of:
THE TECHNICAL MATERIEL CORPORATION
MAMARONECK, NEW YORK

Test Piece
ITEM 8
ITEM 3