

TMC P/N	SHELL TYPE	MFG. SHELL P/N	CONTACT ARRANGEMENT	CONSISTS OF			MATES WITH	REVISIONS											
				SHELL	#16 CONTACT	#20 CONTACT		COAX CONTACT	SYMBOL	DESCRIPTION	DATE	E.M.N. NO.	DRAFT	CHKD	APPD				
JJ-302-1	FEMALE	94-374	1	JJ302-1-1	1 EA.	PN-118-1	2 EA.	PN-118-3	2 EA.	PN-118-5	2 EA.	PN-118-6	2 EA.	PN-118-6	JTB	JTB	JTB	JTB	

JJ-302

SPECIFICATIONS
SHELL

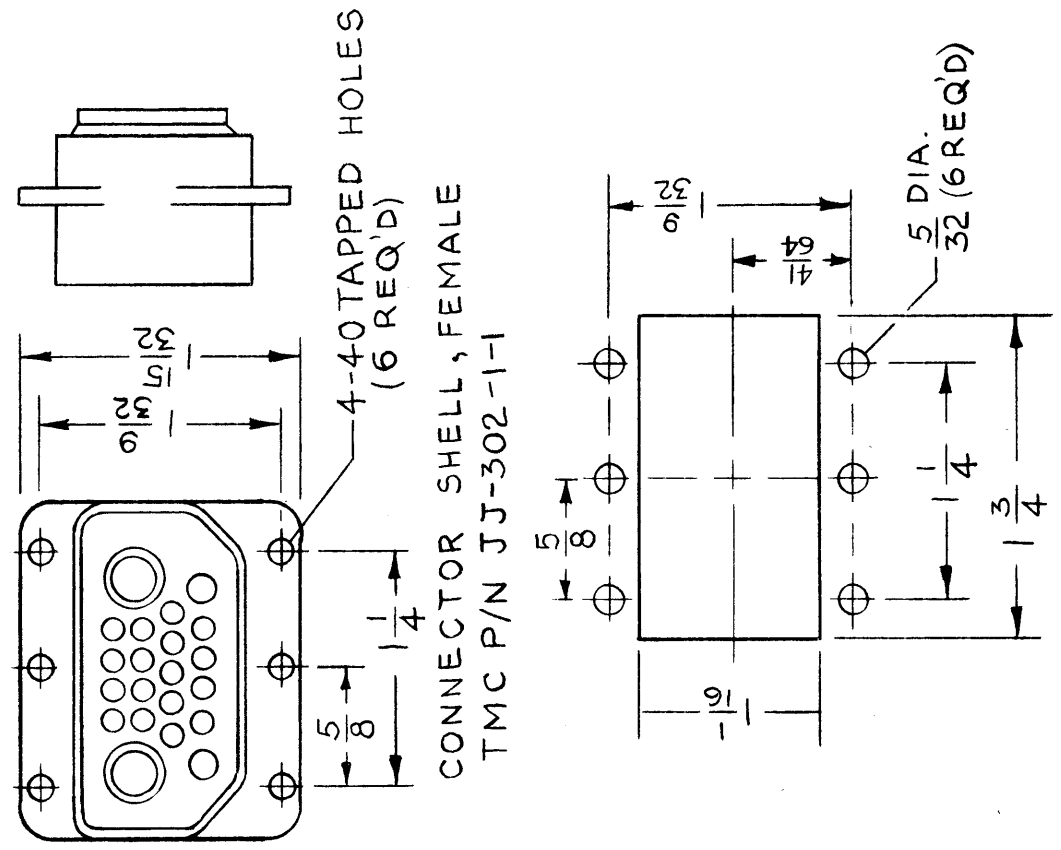
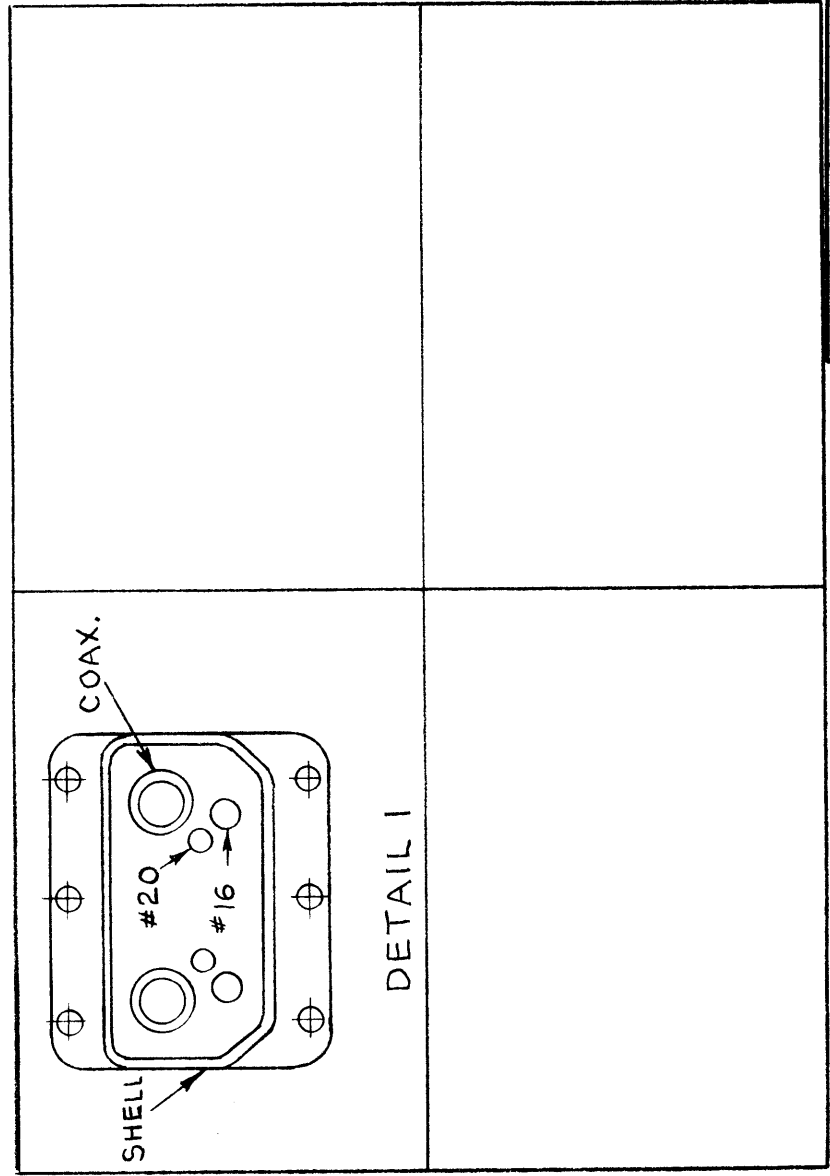
- MATING ENDS: ONE
- STYLE: PUSH-IN INSERTS
- TYPE: ENCLOSED FEMALE
- DIELECTRIC: DIALLYL PHTHALATE
- POLORIZATION: SHELL SHAPE
- TYPE LOCKING: NON LOCKING
- MATERIAL: ALUMINUM
- FINISH: CADMIUM PLATED CHROMATE TREATED
- QUANTITY OF CONTACTS ACCEPTED: 21

- 2 EA. COAXIAL FEMALE
- 2 EA. FOR SIZE #16 AWG WIRE MALE
- 17 EA. FOR SIZE #20 AWG WIRE MALE

FOR PIN INFORMATION REFER TO PN-118

A VARIETY OF CONTACT ARRANGEMENTS MAY BE USED BY INSERTING THE REQUIRED AMOUNT OF CONTACTS AS SHOWN IN "CONTACT ARRANGEMENT" DETAILS.

CONTACT ARRANGEMENT



MOUNTING DETAIL

REQ'D.	ITEM	PART NUMBER	DESCRIPTION	SYMBOL
	AALTONEN		LIST OF MATERIAL	
	MATERIAL	SEE SPEC	THE TECHNICAL MATERIEL CORP. MAMARONECK, NEW YORK	
	FINISH	SEE SPEC	CONNECTOR, RECEPTACLE, ELECTRICAL (FEMALE)	
		UNLESS OTHERWISE SPECIFIED DIMENSIONS ARE IN INCHES AND INCLUDE CHEMICALLY APPLIED OR PLATED FINISHES		
		DECIMALS .X ± .05 .XX ± .01 .XXX ± .005	FRACTIONS ± 1/64 ANGLES ± 0° 30'	

4	MNF-1		
Q'TY./UNIT	MODEL USED ON	ASS'Y. NO.	
SCALE	CODE		
#	C	5401-71	

NOTES

THE CONTENTS OF THIS DRAWING ARE THE EXCLUSIVE PROPERTY OF THE TECHNICAL MATERIEL CORP. ITS UNAUTHORIZED USE OR REPRODUCTION IN WHOLE OR IN PART IS STRICTLY FORBIDDEN.

TMC PART NO.	IMPEDANCE	I.D.	MFGR. No
JJ-305-50	50 OHMS	.588	
JJ-305-70	70 OHMS	.385	

SYN	DESCRIPTION	DATE	E.M.N. NO.	DRAFT	CHKD	APPD
-----	-------------	------	------------	-------	------	------

SPECIFICATIONS

SERIES - QDS
 NO. OF CONTACTS - ONE (1)
 TYPE OF CONTACT - MALE
 DIELECTRIC - TEFLON

ELECTRICAL DATA

MAX. PEAK VOLTAGE - 5 KV
 FREQ. LIMIT - 10,000 MCS
 NOM. IMPEDANCE - 50 Ω OR 70 Ω

CABLE ACCOMMODATIONS
 TYPE - 1 5/8 EIA

MATERIEL

EXTERNAL PARTS - BRASS
 CONTACT - BRASS
 CONTACT FINGER - BERYLLIUM COPPER

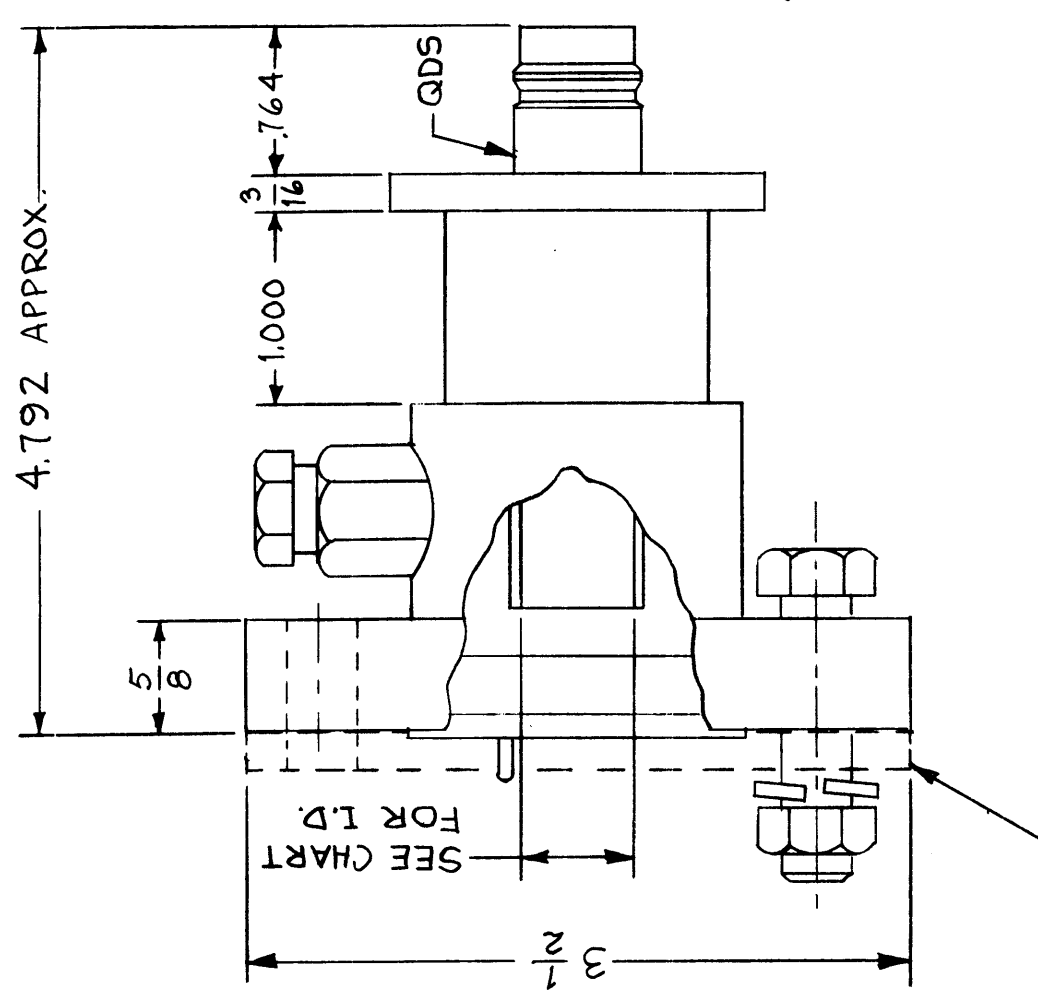
FINISH

EXT. PARTS - BRASS
 CONTACT, FINGERS - BERYLLIUM

SUPPLIED BY MFR.

O-RING - 1 REQ
 SCREW MACHINE - SCHH3118NR24-4 REQ
 WASHER, LOCK SPLIT-LWS31HRN - 4 REQ
 NUT, HEX - NTH3118 NR 16 - 4 REQ
 CONNECTOR, INNER - PO-218-XX - 1 REQ

UOM - P



PROTECTIVE COVER
 IMPREGNATED FIBRE
 BOARD

REQ'D.	ITEM	PART NUMBER	DESCRIPTION	SYMBOL
LIST OF MATERIAL				
MATERIAL				
SEE NOTE				
FINISH				
SEE NOTE				
UNLESS OTHERWISE SPECIFIED DIMENSIONS ARE IN INCHES AND INCLUDE CHEMICALLY APPLIED OR PLATED FINISHES				
DECIMALS ± .05				
FRACTIONS ± 1/64				
ANGLES ± 0° 30'				
TOLERANCES ± .005				

THE TECHNICAL MATERIEL CORP. MAMARONECK, NEW YORK	
TITLE	ADAPTER, CONNECTOR QDS TO EIA, 15/8 50 Ω OR 70 Ω
DRAWN	M TANTILLO
DATE	12-9-63
FINAL APPROVAL	BP
CHECKED	JDR
DATE	12-9-63
ELECT. DES.	
DATE	
MECH. DES.	AM
DATE	12-19-63
REV. LTR.	JJ-305
SHEET	1

QTY./UNIT SCALE
 MODEL USED ON CODE C
 S-401-70
 ASSY. NO.

NOTES

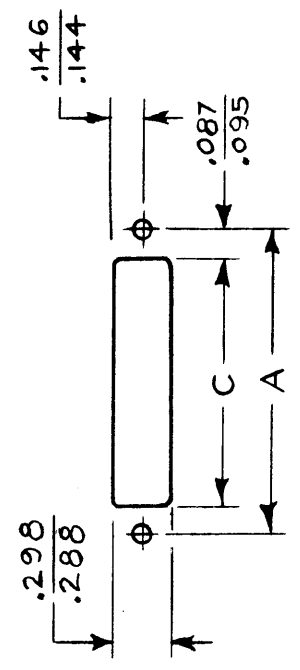
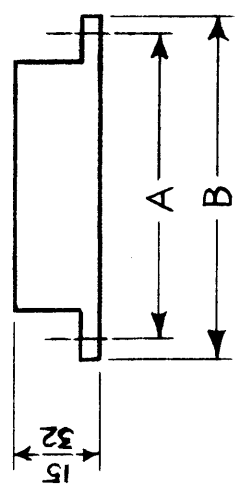
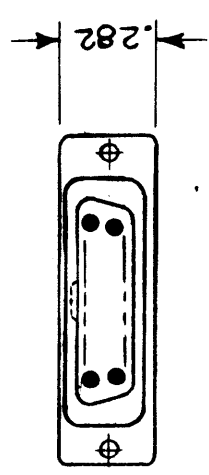
THE CONTENTS OF THIS DRAWING ARE THE EXCLUSIVE PROPERTY OF THE TECHNICAL MATERIEL CORP. ITS UNAUTHORIZED USE OR REPRODUCTION IN WHOLE OR IN PART IS STRICTLY FORBIDDEN.

TMC P/N	MFG P/N	MFG P/N	MFG P/N	A	B	C	MATES WITH	NO. OF CONTACTS
JJ-308-1	223-2	NONE	.593	.843	.410	PL-241-1	5	
JJ-308-2	223-6	NONE	1.193	1.443	1.015	PL-241-2	17	

SYM	DESCRIPTION	DATE	E.M.N. NO.	DRAFT	CHKD	APPD
O	ORIGINAL RELEASE FOR PRODUCTION	8.3.64	+	JPB		
A	ON CHART IT-2 & NO. OF CONTACTS COLM. ADDED.	10-22-64	12687	JPB		

SPECS:

- Quantity of Contacts: See Chart
 - Quantity of Mating ends: 1
 - Contact data
- SEE CHART
- Quantity of identical Contacts:
 - type: male
 - style: Round pin
 - Current Rating: 3 AMP
 - Voltage Rating: 375 V RMS
 - Contact Connected to shell: No
 - Contact Wired for ext. Grd: No
 - Material: Copper
 - Finish: Gold Plate
 - Dielectric Material: L exam
 - Shell data
- type: Inclosed
 - Material: L exam
 - Corrosion Resistant: yes
- Polorization
 - type: Shell shape
 - Locking type: Snap on
 - Cable accomodation data
 - Max.cable size: 3/16"
 - Wire size: #22
 - Clamp: yes



CUTOUT OF MOUNTING

STANDARD DRAWING

QTY./UNIT	—	LFSA-1	ASSY. NO.
SCALE	—	MODEL USED ON	S401-71
		CODE	C

THE CONTENTS OF THIS DRAWING ARE THE EXCLUSIVE PROPERTY OF THE TECHNICAL MATERIEL CORP. ITS UNAUTHORIZED USE OR REPRODUCTION IN WHOLE OR IN PART IS STRICTLY FORBIDDEN.

NOTES

REQ'D.	ITEM	PART NUMBER	DESCRIPTION	SYMBOL
			LIST OF MATERIAL	
			THE TECHNICAL MATERIEL CORP. MAMARONECK, NEW YORK	
			TITLE CONNECTOR, MICRO-MINIATURE FEMALE	
			DRAWN <i>M. Petes</i> DATE 7-9-69	
			CHECKED <i>[Signature]</i> DATE 7-9-69	
			ELECTRICAL <i>[Signature]</i> DATE 7-9-69	
			MECHANICAL <i>[Signature]</i> DATE 7-8-69	
			FINAL APPROVAL <i>[Signature]</i> DATE	
			JJ-308	A
			SHEET	REV. LTR.

STANDARD DRAWING

TMC P/N	MFG P/N	NO. OF CONT.	A MAX.	B	C MAX.	D MAX.	E	TMC HOOD NO.	MATES WITH
JJ310-1*	17-60150-1	15	1.567	1.312	.515	13/32	1-21/64	HO100-1	JJ313-1
JJ310-2*	17-60250-1	25	2.109	1.852	.515	19/32	1-23/64	HO100-2	JJ313-2
JJ310-3*	17-60370-1	37	2.754	2.500	.515	23/32	1-23/64	HO100-3	JJ313-3
JJ310-4*	17-60090-1	9	1.239	.984	.515	13/32	1-21/64	HO100-4	JJ313-4
JJ310-5*	17-60370-6	37	2.754	2.500	.515	23/32	1-23/64	HO100-3	JJ313-3
JJ310-6*	17-60500	50	2.661	2.406	.645	13/16	1-23/64	HO100-5	JJ313-5

SYM	DESCRIPTION	DATE	E.M.N. NO.	DRAFT	CHKD	APPD
X	EXPERIMENTAL RELEASE	7-27-64		SRG		
Ø	ORIGINAL RELEASE FOR PRODUCTION	9-15-64	Ø	SRG		
A	CLERICAL CHANGE	11-5-64		PZ		
B	ON DIELECTRIC, "DIALYL PHTHALATE" WAS "ZYTOL 110" "NOTE: FOR REF. AND..." ADD JON CHART, MFG. P/N, "17-1..." WAS "17-2..."	11-16-64	12914	PZ		
C	JJ310-5 ADDED	6-7-65	14-131	SRG		
D	JJ310-6, AND NOTE ADDED	8/16/65	14692	RYK		

CONTACT DATA (SEE NOTE)

TYPE: FEMALE
 STYLE: CRIMP PINS REMOVABLE
 CURRENT: 5 AMPS
 VOLTAGE: 500 VRMS
 WIRE SIZE ACCOMMODATED: #20 AWG
 MATERIAL: SILNIC BRONZE
 FINISH: GOLD OVER SILVER PLATE

DIELECTRIC: DIALYL PHTHALATE
 CONNECTOR:
 MATERIAL: STEEL CADMIUM PLATED
 FINISH: CLEAR CHROMATE

POLARIZATION: CONNECTOR SHAPE

LOCKING: CONNECTOR MAY BE MODIFIED WITH AN FS-125 SPRING LATCH TO PROVIDE LOCKING FEATURE.

PINS ARE TO BE PACKAGED WITH CONNECTOR. WHEN CONNECTOR IS PURCHASED WITH HOOD, RECEPTACLE, HOOD AND PINS MUST BE PACKAGED TOGETHER.
 CRIMP TOOL: 294-91
 INSERTION & REMOVAL TOOL: 294-92

NOTE: FOR REF. AND FOR SPARE PARTS PURPOSES THE CONTACT NO. SHALL BE PN119-2.
 HARDWARE IS SUPPLIED ONLY WHEN HOOD IS SPECIFIED.

REQ'D.	ITEM	PART NUMBER	DESCRIPTION	SYMBOL
	FEATON		LIST OF MATERIAL	
	MATERIAL	SEE SPECS	THE TECHNICAL MATERIEL CORP. MAMARONECK, NEW YORK	
	FINISH	SEE SPECS	CONNECTOR, RECEPTACLE	
		UNLESS OTHERWISE SPECIFIED DIMENSIONS ARE IN INCHES AND INCLUDE CHEMICALLY APPLIED OR PLATED FINISHES		
		DECIMALS X ± .05 .XX ± .01 .XXX ± .005	FRACTIONS ± 1/64 ANGLES ± 0° 30'	

*H=HOOD
 HF=HOOD&FLOATING BUSHING
 F=FLOATING BUSHING

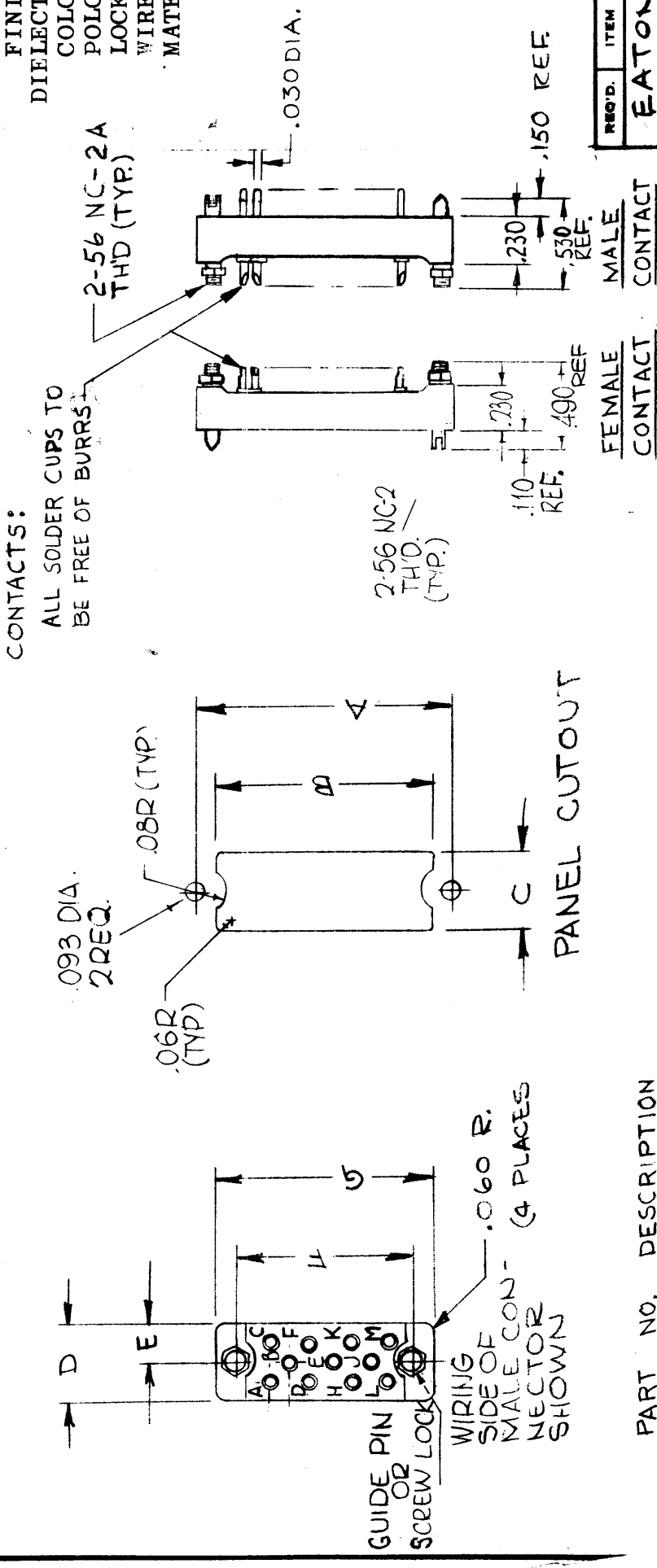
NOTES

THE CONTENTS OF THIS DRAWING ARE THE EXCLUSIVE PROPERTY OF THE TECHNICAL MATERIEL CORP. ITS UNAUTHORIZED USE OR REPRODUCTION IN WHOLE OR IN PART IS STRICTLY FORBIDDEN.

STANDARD DRAWING

STANDARD DRAWING

TMC PART NUMBER	MFG PART NUMBER	No. OF CONTACTS	DIMENSIONS						
			A	B	C	D	E	F	G
JJ311-1*	MM11*-F5L	11	.532	.410	.270	.270	.135	.532	.780



PART NO. DESCRIPTION
JJ311-1 P
 BASIC P/N TYPE * CONTACTS
 SEE CHART R- PIN
 S- SOCKET

NOTES

THE CONTENTS OF THIS DRAWING ARE THE EXCLUSIVE PROPERTY OF THE TECHNICAL MATERIEL CORP. ITS UNAUTHORIZED USE OR REPRODUCTION IN WHOLE OR IN PART IS STRICTLY FORBIDDEN.

QTY./UNIT	SCALE	MODEL USED ON	ASSY. NO.
		ARCA	5401-136

REVISIONS

SYM	DESCRIPTION	DATE	E.M.N. NO.	DRAFT	CHKD	APPD
X	EXPER. RELEASE	6-14-64	1	RF		SM
Ø	ORIGINAL RELEASE FOR PRODUCTION	9-23-64	Ø	RL		SM
A	DRAWING UPDATED (DIM. & DIST)	5-2-66	16189	WRAD		SM
B	REF ADDED TO .10, .150, .490, .530 DIM.	7-15-66	16566	WRAD		SM

CONTACT DATA
 TYPE: MALE OR FEMALE
 STYLE: ROUND
 CURRENT RATING: 3 AMPS MAX.
 VOLTAGE BREAKDOWN AT SEA LEVEL: 1800V RMS
 MATERIAL: PHOSPHOR BRONZE
 CONTACTS: CENTER TO CENTER .094" MIN.
 FINISH: GOLD OVER SILVER
 DIELECTRIC: DIALYL PHTHALATE
 COLOR: GREEN
 POLARIZATION: KEY
 LOCKING: SCREWLOCK
 WIRE SIZE ACCOMMODATED: #22 AWG
 MATES WITH: PL247.

REQD.	ITEM	PART NUMBER	DESCRIPTION	SYMBOL
	EATON		LIST OF MATERIAL	
	MATERIAL		THE TECHNICAL MATERIEL CORP. MAMARONECK, NEW YORK	
	FINISH		TITLE CONNECTOR RECEPTACLE MICRO MINIATURE	

UNLESS OTHERWISE SPECIFIED DIMENSIONS ARE IN INCHES AND INCLUDE CHEMICALLY APPLIED OR PLATED FINISHES	DRAWN	DATE	FINAL APPROVAL	DATE
DECIMALS .X ± .05 .XX ± .01 .XXX ± .005	FM	6-11-64	RF	
FRACTIONS ± 1/64 ANGLES ± 0° 30'	CHECKED	DATE		
	FM	9-24-64		
	ELECT. DES.	DATE		
	RF	9/25/64		
	MECH. DES.	DATE		
	RF	9/24/64		

TMC P/N	MFG. P/N	NO. OF CONTACTS	NO. OF POS.	A	B	C	D	E
JJ312-44	582734-1	44	22	3.596	4.030	4.280	3.760	3.488

SYM	DESCRIPTION	DATE	E.M.N. NO.	DRAFT	CHKD	APPD
X	EXPERIMENTAL RELEASE	9-29-64	X	SRG		
Ø		10-1-64	Ø	9E		
A	ORIGINAL RELEASE FOR PRODUCTION	6-21-65	14312	DVX	SRG	MMH
B	LINE 2 OF SPECS. NOW READS PHENOLIC INSULATION RESISTANCE, TEMPERATING ADDED	7-8-65	14401	MMH		MMH
C	582734-1 WA: 582528-1 (MFG PT. NO) CLERICAL CHANGE (BK ADDED TO PHENOLIC)	9/15/65	CC	MMH		90

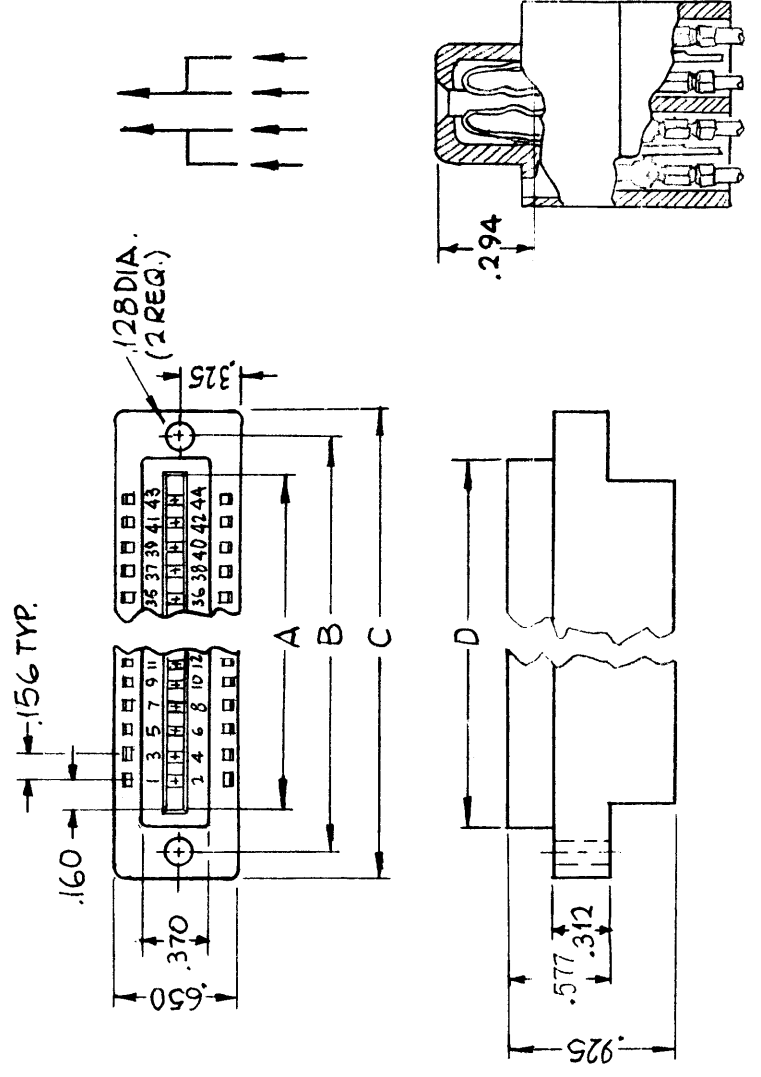
REV. LTR.	SHEET	DATE	APPROVAL
	312	9/30/64	SRG

JJ312

SPECIFICATIONS

OPERATING TEMP: -65 TO +125°C
 MATERIAL: PHENOLIC, BLACK.
 CONTACTS: PHOSPHOROUS BRONZE
 FINISH: .00003 GOLD OVER .00003 NICKEL
 CURRENT RATING: 5 AMPS
 VOLTAGE RATING: 1800 VRMS AT SEA LEVEL
 675 VRMS AT 50,000 FEET
 450 VRMS AT 70,000 FEET
 SHELL: NONE
 POLARIZATION: OPTIONAL USE KY105-1
 LOCKING: NONE
 MEANS OF CONNECTION: TERMINAL TAB TMC TE203
 NO. OF TABS FOR CONTACT: 2
 INSULATION RESISTANCE: 25,000 MEGOHM
 TEMP RATING: -55°C TO +105°C.

NOTE:
 ACCEPTS FOUR TAB TERMINALS PER POSITION.
 TWO COMMON TO THE TOP OF THE PRINTED
 CIRCUIT BOARD, TWO COMMON TO THE BOTTOM.
 BOARD PATHS ARE NOT COMMONED.



REQ'D.	ITEM	PART NUMBER	DESCRIPTION	SYMBOL
	EATON		LIST OF MATERIAL	
	MATERIAL		SEE SPECS	
	FINISH		SEE SPECS	
			UNLESS OTHERWISE SPECIFIED DIMENSIONS ARE IN INCHES AND INCLUDE CHEMICALLY APPLIED OR PLATED FINISHES	
			DECIMALS .X ± .05 .XX ± .01 .XXX ± .05	
			FRACTIONS ± 1/64 ANGLES ± 0° 30'	

Q'TY./UNIT	MODEL USED ON	ASSY. NO.
SCALE 1:1	RTMU-1	S401-279

THE CONTENTS OF THIS DRAWING ARE THE EXCLUSIVE PROPERTY OF THE TECHNICAL MATERIEL CORP. ITS UNAUTHORIZED USE OR REPRODUCTION IN WHOLE OR IN PART IS STRICTLY FORBIDDEN.

NOTES

DATE	DATE	DATE	DATE
9-29-64	9-29-64	9-30-64	10/1/64

TITLE: CONNECTOR, RECEPTACLE, ELEC.
 1/16 PRINTED CIRCUIT BOARD
 THE TECHNICAL MATERIEL CORP.
 MAMARONECK, NEW YORK

STANDARD DRAWING

TMC P/N	MFG P/N RECEPTACLE	NO. OF CONTACTS	A MAX.	B	C MAX.	D MAX.	E	TMC HOOD NO.	MATES WITH
JJ313-1*	17-70150-1	15	1.567	1.312	.515	13/32	1-21/64	H0100-1	JJ310-1
JJ313-2*	17-70250-1	25	2.109	1.852	.515	19/32	1-23/64	H0100-2	JJ310-2
JJ313-3*	17-70370-1	37	2.754	2.500	.515	23/32	1-23/64	H0100-3	JJ310-3
JJ313-4*	17-70090-1	9	1.239	.984	.515	13/32	1-21/64	H0100-4	JJ310-4
JJ313-5*	17-70500-1	50	2.661	2.406	.645	13/16	1-23/64	H0100-5	JJ310-6

REVISIONS			
SYM	DESCRIPTION	DATE	EM.N. NO.
X	EXPERIMENTAL RELEASE	7-24-64	0
Ø	ORIGINAL RELEASE FOR PRODUCTION	9-15-64	Ø
A	CLERICAL CHANGE	11-5-64	—
B	ON DIELECTRIC, "DIALYL PHTHALATE" WAS "ZYTOL 110" "NOTE: FOR REF. AND..." ADD; ON CHART, MHG. PM, "17-7," WAS "17-2,"	11-18-64	12914
C	NOTE AND LINE JJ313-5* ADDED	9/16/65	14691

U
M
3

CONTACT DATA (SEE NOTE)

TYPE: MALE
 STYLE: CRIMP PINS REMOVABLE
 CURRENT: 5A
 VOLTAGE: 500 RMS
 WIRE SIZE ACCOMMODATED: #20 AWG
 MATERIAL: SILNIC BRONZE
 FINISH: GOLD OVER SILVER PLATE

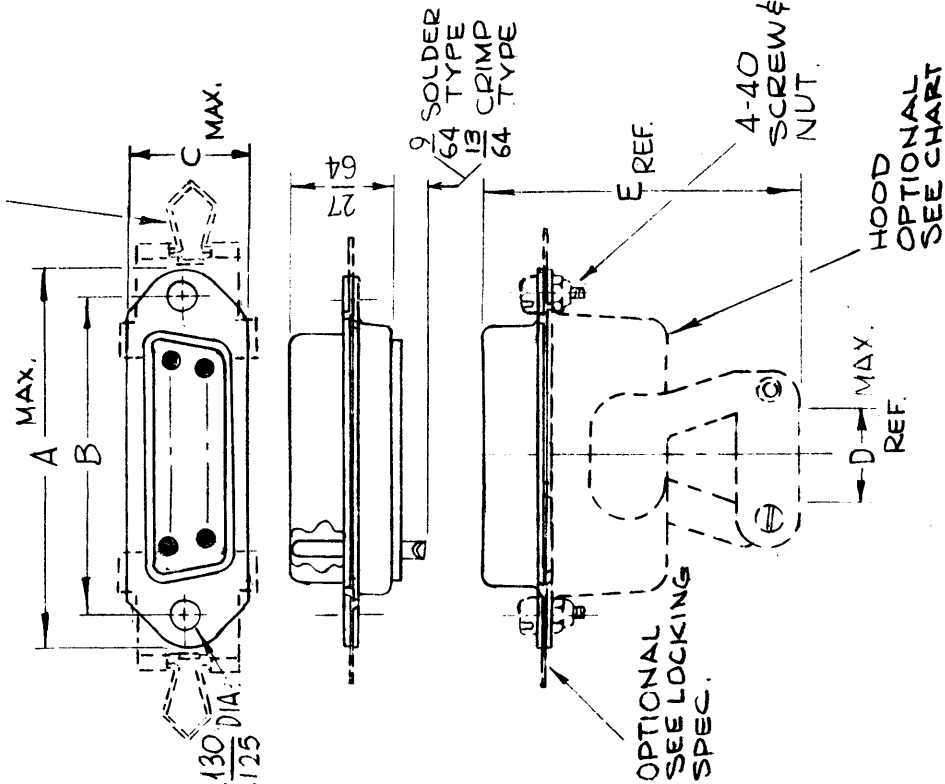
DIELECTRIC: DIALYL PHTHALATE
 CONNECTOR:
 MATERIAL: STEEL CADMIUM PLATE
 FINISH: CLEAR CHROMATE
 POLARIZATION: CONNECTOR SHAPE

LOCKING: CONNECTOR MAY BE MODIFIED WITH FS-125 SPRING LATCH TO PROVIDE LOCKING FEATURE.

PINS ARE TO BE PACKAGED WITH CONNECTOR. WHEN CONNECTOR IS PURCHASED WITH HOOD, RECEPTACLE, HOOD AND PINS MUST BE PACKAGED TOGETHER.
 CRIMP TOOL: 294-91
 INSERTION TOOL: 294-92

NOTE: FOR REF & SPARE PARTS PURPOSES, THE CONTACT NO. SHALL BE PN119-1.
 HARDWARE SUPPLIED ONLY WHEN HOOD IS SPECIFIED

OPTIONAL SEE LOCKING SPEC.



REQ'D.	ITEM	PART NUMBER	DESCRIPTION	SYMBOL
FEATON				
LIST OF MATERIAL				
MATERIAL SEE SPECS				
FINISH SEE SPECS				
UNLESS OTHERWISE SPECIFIED DIMENSIONS ARE IN INCHES AND INCLUDE CHEMICALLY APPLIED OR PLATED FINISHES				
DECIMALS ± .05				
FRACTIONS ± 1/64				
TOLERANCES .XX ± .01				
ANGLES ± 0° 30'				
TOLERANCES .XXX ± .005				

Q'TY./UNIT	SCALE	MODEL USED ON	ASSY. NO.
RTTD-1	1:1	S401-71	C

* ADD H TO PART NO. WHEN HOOD IS USED.
 F-FOR FLOATING BUSHING.

NOTES

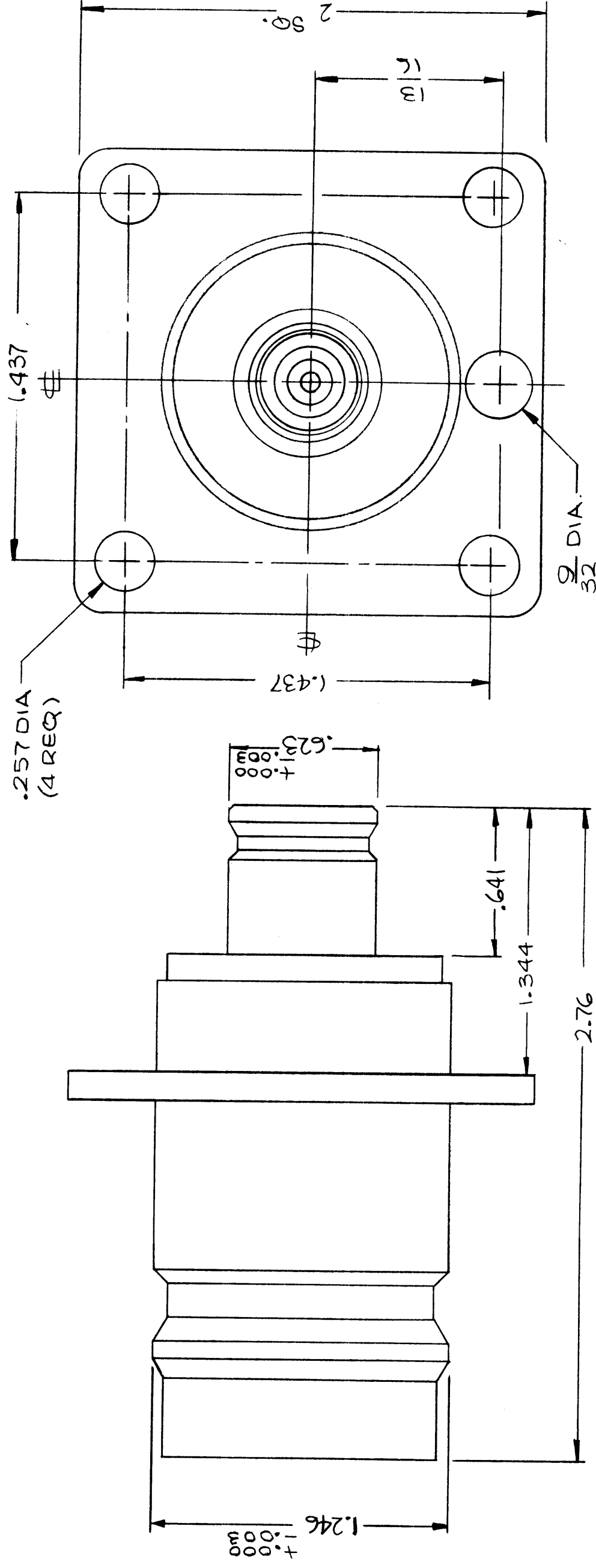
STANDARD DRAWING

SPECIFICATIONS

- 1 - SERIES: QDL (F) TO QDS (F)
- 2 - NO. OF CONTACTS: 1
- 3 - TYPE OF CONTACTS: FEMALE
- 4 - DIELECTRIC: TEFLON
- 5 - MATERIAL: BRASS
- 6 - FINISH: SILVER PLATE & RHO DIUM FLASH

MAX PEAK VOLTAGE: 10KV
 FREQ. LIMIT: 10,000MHZ
 NOM IMPEDANCE: 50Ω

- EXT PARTS: BERYLLIUM COPPER
- CONTACT: SILVER PLATE & RHO DIUM FLASH
- CONTACT: GOLD FLASH



REVISIONS

SYM	DESCRIPTION	DATE	E.M.N. NO.	DRAFT	CHKD	AP
A	ORIGINAL RELEASE FOR PRODUCTION	1/13/67		CV		
A	1.246 DIM. RELOCATED	5-3-67	18165	L.A.K.		R

JJ316

NOTES

THE CONTENTS OF THIS DRAWING ARE THE EXCLUSIVE PROPERTY OF THE TECHNICAL MATERIEL CORP. ITS UNAUTHORIZED USE OR REPRODUCTION IN WHOLE OR IN PART IS STRICTLY FORBIDDEN.

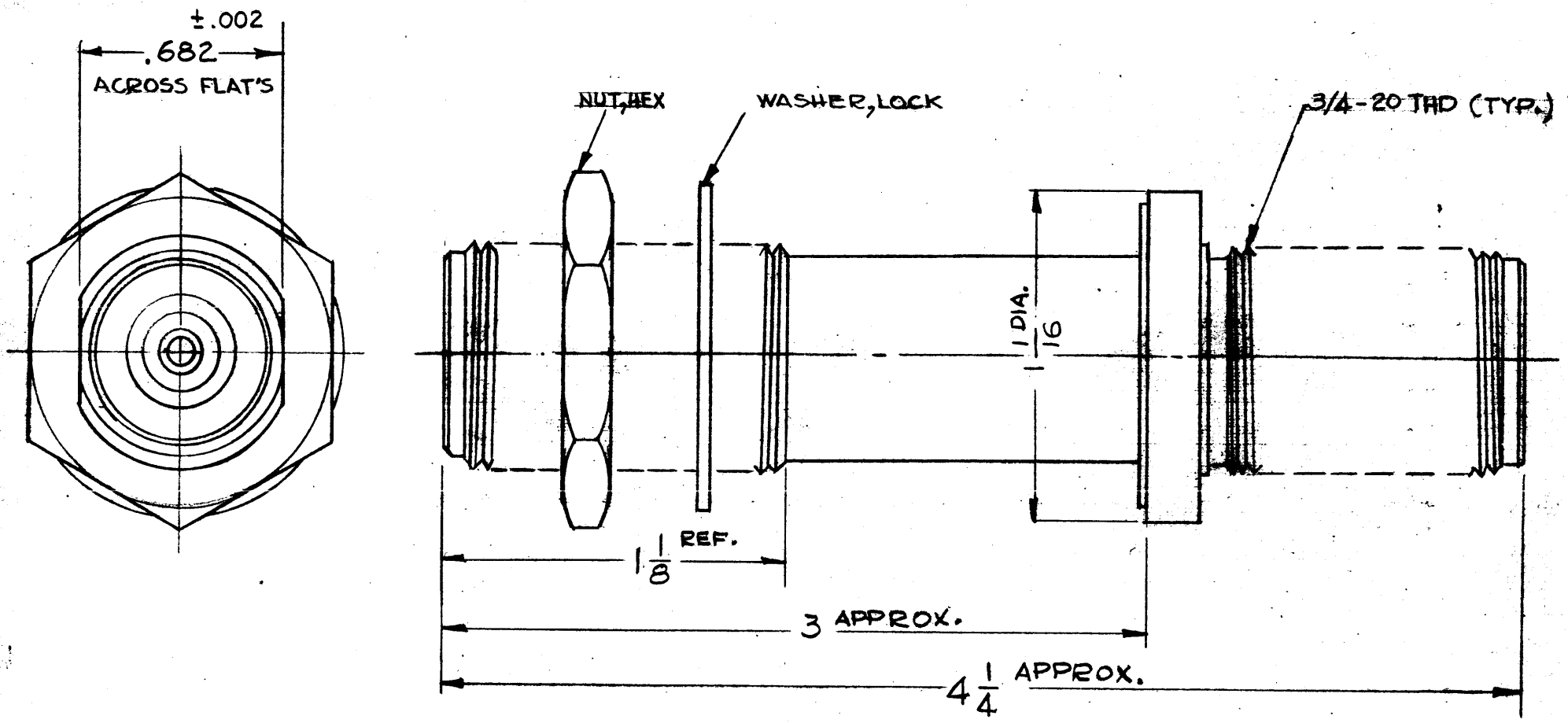
REQ'D.	ITEM	PART NUMBER	DESCRIPTION	SYMBOL
	OCTAVID		LIST OF MATERIAL	
	MATERIAL	SEE SPECS	THE TECHNICAL MATERIEL CORP. MAMARONECK, NEW YORK	
	FINISH	SEE SPECS	CONNECTOR RECEPTACLE, ADAPTOR	
		UNLESS OTHERWISE SPECIFIED DIMENSIONS ARE IN INCHES AND INCLUDE CHEMICALLY APPLIED OR PLATED FINISHES		
		DECIMALS	FRAC TI NS	
		.X ± .05	± 1/64	
		.XX ± .01	ANGLES	
		.XXX ± .005	± 0° 30'	

DATE	DATE	DATE	DATE	DATE
1-15-67	1-15-67	1-15-67	1-15-67	1-15-67
1-15-67	1-15-67	1-15-67	1-15-67	1-15-67
1-15-67	1-15-67	1-15-67	1-15-67	1-15-67
1-15-67	1-15-67	1-15-67	1-15-67	1-15-67

STANDARD DRAWING

JJ 320

REVISIONS						
SYM	DESCRIPTION	DATE	E.M.N. NO.	DRAFT	CHKD	APPD
X	EXP. RELEASE	10-8-64		G.D.L		
Ø	ORIGINAL RELEASE FOR PRODUCTION	11-2-64	Ø	JZ		



SPECIFICATIONS

QUANTITY OF CONTACTS: 1 EACH END
 MATING ENDS: 2

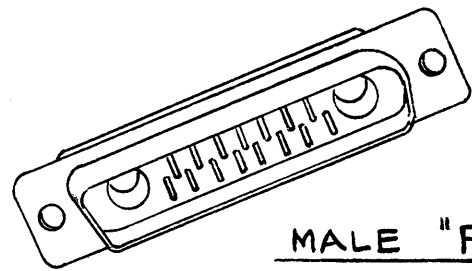
CONTACT DATA:
 QUANTITY OF IDENTICAL CONTACTS: 2-ONE EACH END
 TYPE: FEMALE/FEMALE
 STYLE: ROUND
 VOLTAGE RATING: 5KV PK
 IMPEDANCE: 50 OHMS
 MATERIAL & FINISH: BERYLLIUM COPPER, SILVER PLATE GOLD FLASH.
 DIELECTRIC: TEFLON
 BODY MAT'L & FINISH: BRASS SILVER PLATE RODIUM FLASH.
 TYPE LOCKING: SCREW
 TYPE THREAD: EXTERNAL
 THREAD SIZE: 3/4-20

STANDARD DRAWING

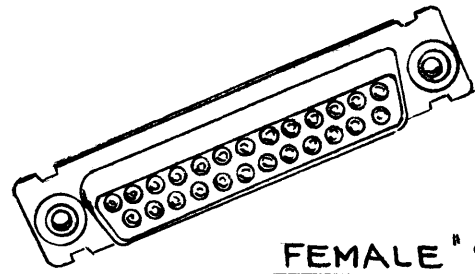
REQ'D.	ITEM	PART NUMBER	DESCRIPTION	SYMBOL
LIST OF MATERIAL				
MATERIAL		SEE SPECS.	THE TECHNICAL MATERIEL CORP. MAMARONECK, NEW YORK	
FINISH		SEE SPECS.	TITLE ADAPTER, BULKHEAD HN	
UNLESS OTHERWISE SPECIFIED DIMENSIONS ARE IN INCHES AND INCLUDE CHEMICALLY APPLIED OR PLATED FINISHES			DRAWN G.D.L	DATE 10-8-64
			CHECKED @	DATE 10-12-64
			ELECT. DES. JZ	DATE 11/2/64
			MECH. DES.	DATE
TOLERANCES			FINAL APPROVAL JJ320	
DECIMALS .X ± .05 .XX ± .01 .XXX ± .005			DATE	
FRACTIONS ± 1/64 ANGLES ± 0° 30'			SHEET	
			REV. LTR.	

STANDARD		
QTY./UNIT	MODEL USED ON	ASSY. NO.
DO NOT SCALE	C	5401-70 (2989)
THE CONTENTS OF THIS DRAWING ARE THE EXCLUSIVE PROPERTY OF THE TECHNICAL MATERIEL CORP. ITS UNAUTHORIZED USE OR REPRODUCTION IN WHOLE OR IN PART IS STRICTLY FORBIDDEN.		

NOTES



MALE "P"



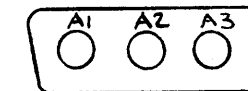
FEMALE "S"

JJ321

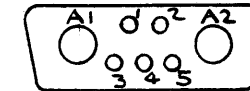
REVISIONS

SYM	DESCRIPTION	DATE	E.M.N. NO.	DRAFT	CHKD	APFD
X	EXPERIMENTAL RELEASE	10.19.64	X	JSB		
Ø	ORIGINAL RELEASE FOR PRODUCTION	10.30.64	Ø	Ø.P.		

TMC P/N	MFG P/N	TOTAL CONT.	SHELL TYPE	COAX CONT	WIRE CONT	A	B	C	D	E	G	H	J	K	L	M	N
JJ321-3P*	DAM-3W3P	3	1	3	NONE	1.541	1.025	1.312	.360	.494	1.033	.422	.030	.236	.045	.422	.120
JJ321-3S*	DAMF-3W3S	3	1	3	NONE	1.541	.968	1.312	.308	.494	1.083	.422	.030	.243	.045	.429	.120
JJ321-7P*	DAM-7W2P	7	2	2	5	1.541	1.025	1.312	.360	.494	1.083	.422	.030	.236	.045	.422	.120
JJ321-7S*	DAMF-7W2S	7	2	2	5	1.541	.968	1.312	.308	.494	1.083	.422	.030	.243	.045	.429	.120
JJ321-11P*	DAM-11W1P	11	3	1	10	1.541	1.025	1.312	.360	.494	1.083	.422	.030	.236	.045	.422	.120
JJ321-11S*	DAMF-11W1S	11	3	1	10	1.541	.968	1.312	.308	.494	1.083	.422	.030	.243	.045	.429	.120

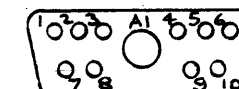


#1



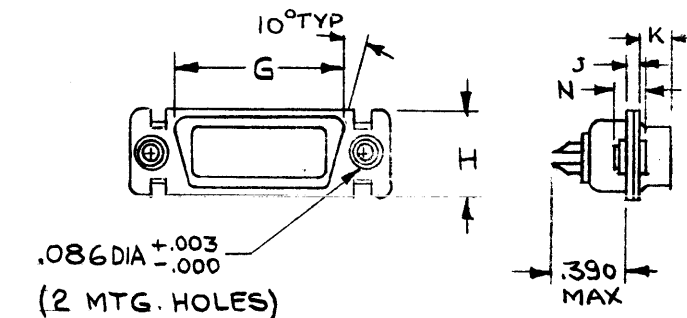
#2

SHELL TYPES



#3

FLOATING BUSHING



CONTACT DATA:

TYPE: MALE AND FEMALE (SEE PART NUMBER P FOR MALE, S FOR FEMALE)

STYLE: ROUND #20 NON REMOVABLE AND COAX REMOVABLE

VOLTAGE TEST: 60 CPS AC (RMS: 1250V SEA LEVEL 750V 20,000 FT. CONTACT TO CONTACT AND CONTACT TO SHELL IN UNMATED CONDITION.

CURRENT RATING: #20 CONTACTS 5 AMPS

IMPEDANCE OF COAX: 50 Ω

MATERIAL & FINISH: #20 MALE & FEMALE AND COAX MALE PINS ARE BRASS, GOLD PLATE OR SILVER PLATE: COAX FEMALE CONTACTS ARE PHOSPHOR BRONZE, GOLD PLATE OR SILVER PLATE.

DIELECTRIC MATERIAL: DIALYL PHTHALATE ASBESTOS FILLED

SHELL MATERIAL AND FINISH: STEEL, CADMIUM PLATE WITH YELLOW CHROMATE

POLORIZATION: SHELL SHAPE

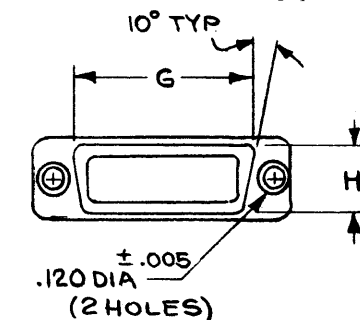
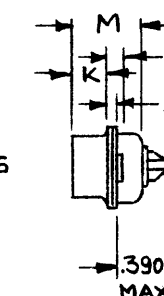
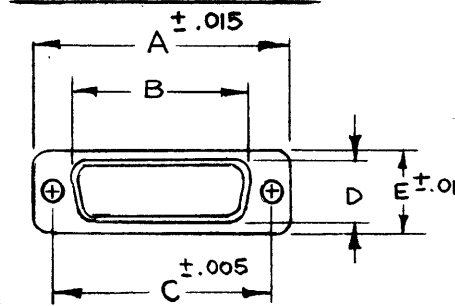
LOCKING FEATURE: NONE

CABLE ACCOMODATION: #20 WIRE AND COAX RG174, RG188

REMOVABLE PIN USED: TMC PN 120

*ADD "F" TO PART NO. FOR FLOATING BUSHING.

STANDARD SHELL



STANDARD DRAWING

Q'TY./UNIT	MODEL USED ON	ASS'Y. NO.
SCALE NONE	CODE C	S401-176

THE CONTENTS OF THIS DRAWING ARE THE EXCLUSIVE PROPERTY OF THE TECHNICAL MATERIEL CORP. ITS UNAUTHORIZED USE OR REPRODUCTION IN WHOLE OR IN PART IS STRICTLY FORBIDDEN.

REQ'D.	ITEM	PART NUMBER	DESCRIPTION	SYMBOL
LIST OF MATERIAL				
MATERIAL		THE TECHNICAL MATERIEL CORP. MAMARONECK, NEW YORK		
FINISH		TITLE CONNECTOR, RECEPTACLE (REMOVABLE CONTACTS)		
UNLESS OTHERWISE SPECIFIED DIMENSIONS ARE IN INCHES AND INCLUDE CHEMICALLY APPLIED OR PLATED FINISHES		DRAWN JSB CHECKED @ ELECT. DES. JC MECH. DES.	DATE 10.19.64 DATE 10-29-64 DATE 10/29/64	FINAL APPROVAL DATE JJ321
DECIMALS .X ± .05 .XX ± .01 .XXX ± .005		FRACTIONS ± 1/64 ANGLES ± 0° 30'		SHEET REV. LTR.

NOTES

JJ322

REVISIONS						
SYM	DESCRIPTION	DATE	E.M.N. NO.	DRAFT	CHKD	APPD
Ø	ORIGINAL RELEASE FOR PRODUCTION	11/2/66	Ø	CV		

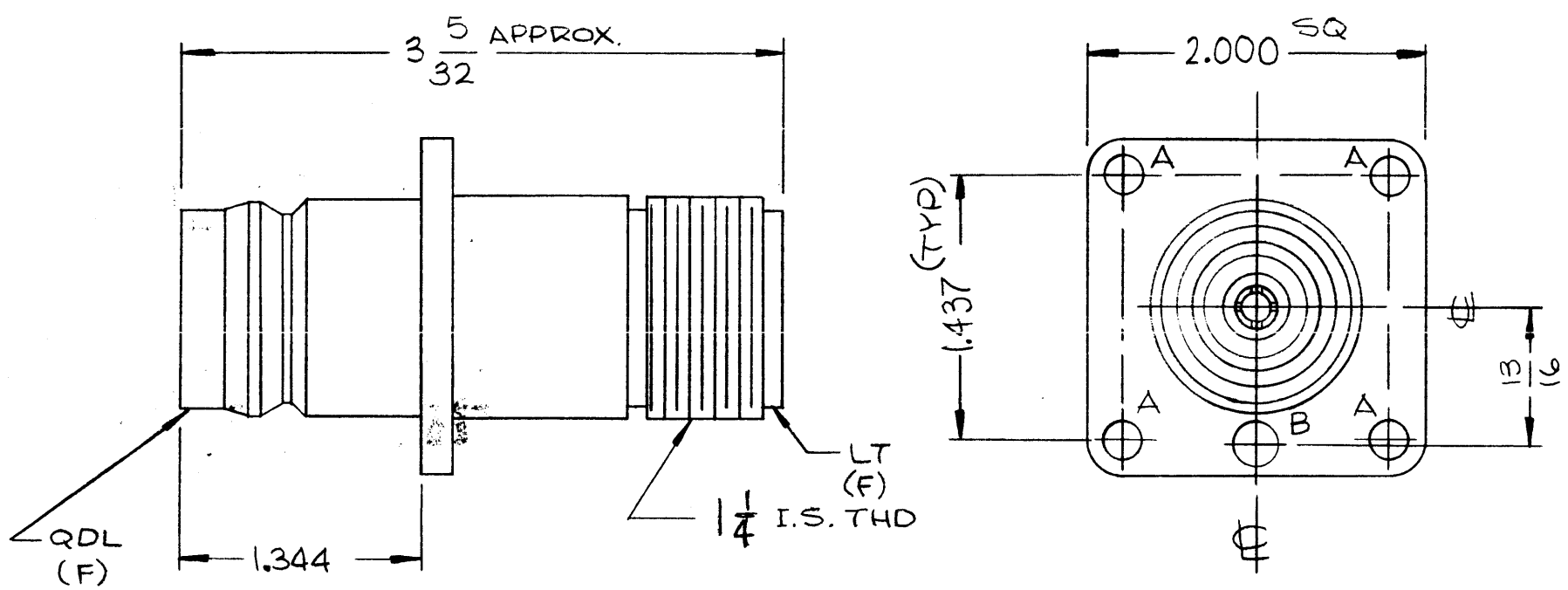
SPECIFICATIONS

SERIES: QDL TO LT
 NUMBER OF CONTACTS: 1
 TYPE OF CONTACTS: FEMALE
 DIELECTRIC: TEFLON

ELECTRICAL DATA:
 MAX PEAK VOLTAGE: 5,000 v
 FREQUENCY LIMIT: 1,000 mc
 NOMINAL IMPEDANCE: 50 OHMS

MATERIAL:
 EXTERNAL PARTS: BRASS
 CONTACT: BRASS

FINISH:
 EXTERNAL PARTS: SILVER PLATE AND RHODIUM FLASH
 CONTACT: SILVER PLATE AND GOLD FLASH



HOLE	DESCRIPTION	REQ
A	.257 DIA	4
B	9/32 DIA	1

NOTES

Q'TY./UNIT	MODEL USED ON	ASS'Y. NO.
SCALE	CODE	

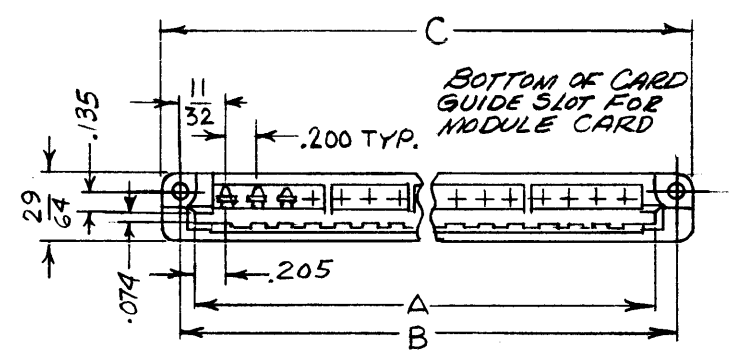
THE CONTENTS OF THIS DRAWING ARE THE EXCLUSIVE PROPERTY OF THE TECHNICAL MATERIEL CORP. ITS UNAUTHORIZED USE OR REPRODUCTION IN WHOLE OR IN PART IS STRICTLY FORBIDDEN.

REQ'D.	ITEM	PART NUMBER	DESCRIPTION	SYMBOL
LIST OF MATERIAL				
MATERIAL		THE TECHNICAL MATERIEL CORP. MAMARONECK, NEW YORK		
FINISH		TITLE CONNECTOR, RECEPTACLE (QDL TO LT)		
UNLESS OTHERWISE SPECIFIED DIMENSIONS ARE IN INCHES AND INCLUDE CHEMICALLY APPLIED OR PLATED FINISHES		DRAWN <i>Wth</i>	DATE <i>11/29/66</i>	FINAL APPROVAL <i>[Signature]</i>
DECIMALS .X ± .05 .XX ± .01 .XXX ± .005		CHECKED <i>[Signature]</i>	DATE <i>11/29/66</i>	DATE <i>11/30/66</i>
FRACTIONS ± 1/64 ANGLES ± 0° 30'		ELECT. DES. <i>[Signature]</i>	DATE <i>11-29-66</i>	
TOLERANCES		MECH. DES. <i>[Signature]</i>	DATE <i>11-29-66</i>	
				JJ322
				Ø
				SHEET
				REV. LTR.

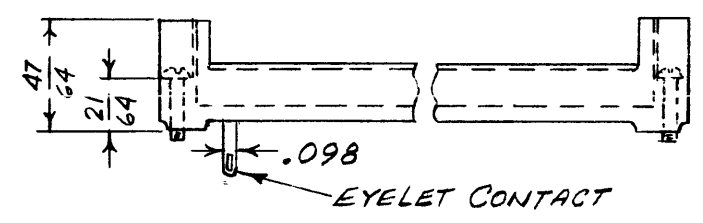
TMC PART No.	NO. OF CONTACTS	A ±.005	B ±.015	C MAX.	D	G*	N*
JJ323-12	12	2.610	2.880	3.150	2.440	C=.296 NC=.171	C=.125 NC=.062

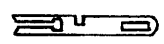
REVISIONS						
SYM	DESCRIPTION	DATE	E.M.N. NO.	DRAFT	CHKD	APPD
Ø	ORIGINAL RELEASE FOR PRODUCTION	6-15-65		JC		

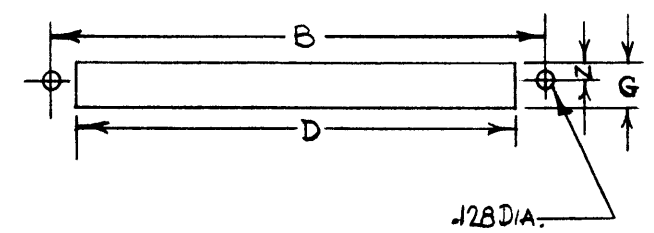
JJ 323



*** NOTE:**
C = CONDUCTIVE CHASSIS
 (.125 CLEARANCE AROUND CONTACTS)
NC = NON-CONDUCTIVE CHASSIS
 (.062 CLEARANCE AROUND CONTACTS)



TYPE OF CONTACT:
 .098 BASE TAPER TAB W/WIRE HOLE

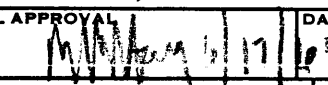
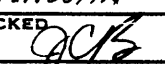



CHASSIS LAYOUT

SPECIFICATIONS

CURRENT RATING: 10 AMPERES
 CONTACT RESISTANCE: 0.005 OHM, MAXIMUM
 CONTACT MATERIAL AND PLATING: PHOSPHOR BRONZE PER QQ-B-750, COMPOSITION A. + NICKEL PLATED, 30 TO 150 MICROINCHES, FOLLOWED BY GOLD FLASH, 10 TO 20 MICROINCHES.
 INSULATOR MATERIAL: DIALYL PHTHALATE, GLASS FILLED, PER MIL-M-14F, TYPE SDG.
 INSULATION RESISTANCE: 25,000 MEGOHMS, MINIMUM.
 DIELECTRIC WITHSTANDING VOLTAGE (AT 52% RELATIVE HUMIDITY):
 SEA LEVEL: 2500 VOLTS RMS
 3.4" HG: 675 VOLTS RMS
 WITHDRAWAL FORCE: 8 OUNCES PER CONTACT, AVERAGE
 MILITARY SPECIFICATION:
 MIL-C-21097 (BU. SHIPS) APPLICABLE PORTIONS
 MIL-E-19600 (BU. WEPS) PARAGRAPH 3.5.5
 † TERMINALS: EYELET

STANDARD DRAWING

REQ'D.	ITEM	PART NUMBER	DESCRIPTION	SYMBOL
LIST OF MATERIAL				
MATERIAL		THE TECHNICAL MATERIEL CORP. MAMARONECK, NEW YORK		
FINISH		TITLE CONNECTOR, RECEPTACLE PRINTED CKT BOARD 1/16		
UNLESS OTHERWISE SPECIFIED DIMENSIONS ARE IN INCHES AND INCLUDE CHEMICALLY APPLIED OR PLATED FINISHES		DRAWN H. AUSTIN	DATE 6-14-65	FINAL APPROVAL 
		CHECKED 	DATE 6-15-65	DATE 6-17-65
		ELECT. DES. 	DATE 6-16-65	DATE
		MECH. DES.	DATE	DATE
		JJ 323		Ø
SHEET				REV. LTR.

Q'TY./UNIT	MODEL USED ON	ASS'Y. NO.
SCALE	CODE C	S401-379 (5007 SERIES)
THE CONTENTS OF THIS DRAWING ARE THE EXCLUSIVE PROPERTY OF THE TECHNICAL MATERIEL CORP. ITS UNAUTHORIZED USE OR REPRODUCTION IN WHOLE OR IN PART IS STRICTLY FORBIDDEN.		

NOTES

STANDARD DRAWING

A
JJ-325

REVISIONS						
SYM	DESCRIPTION	DATE	E.M.N. NO.	DRAFT	CHKD	APFD
Ø	ORIGINAL RELEASE FOR PRODUCTION	9/3/65	Ø	AVV		
A	43 DR. (.089 DIA) WAS 3-56 TAP. NOTE 2 ADDED	9/29/65	15472	AVV	JB	gc

SPECIFICATIONS

SERIES --- BNC
 No. OF CONTACTS --- ONE (1)
 TYPE OF CONTACT --- FEMALE
 DIELECTRIC --- TEFLON
 REMARKS --- SWITCH TYPE

ELECTRICAL DATA

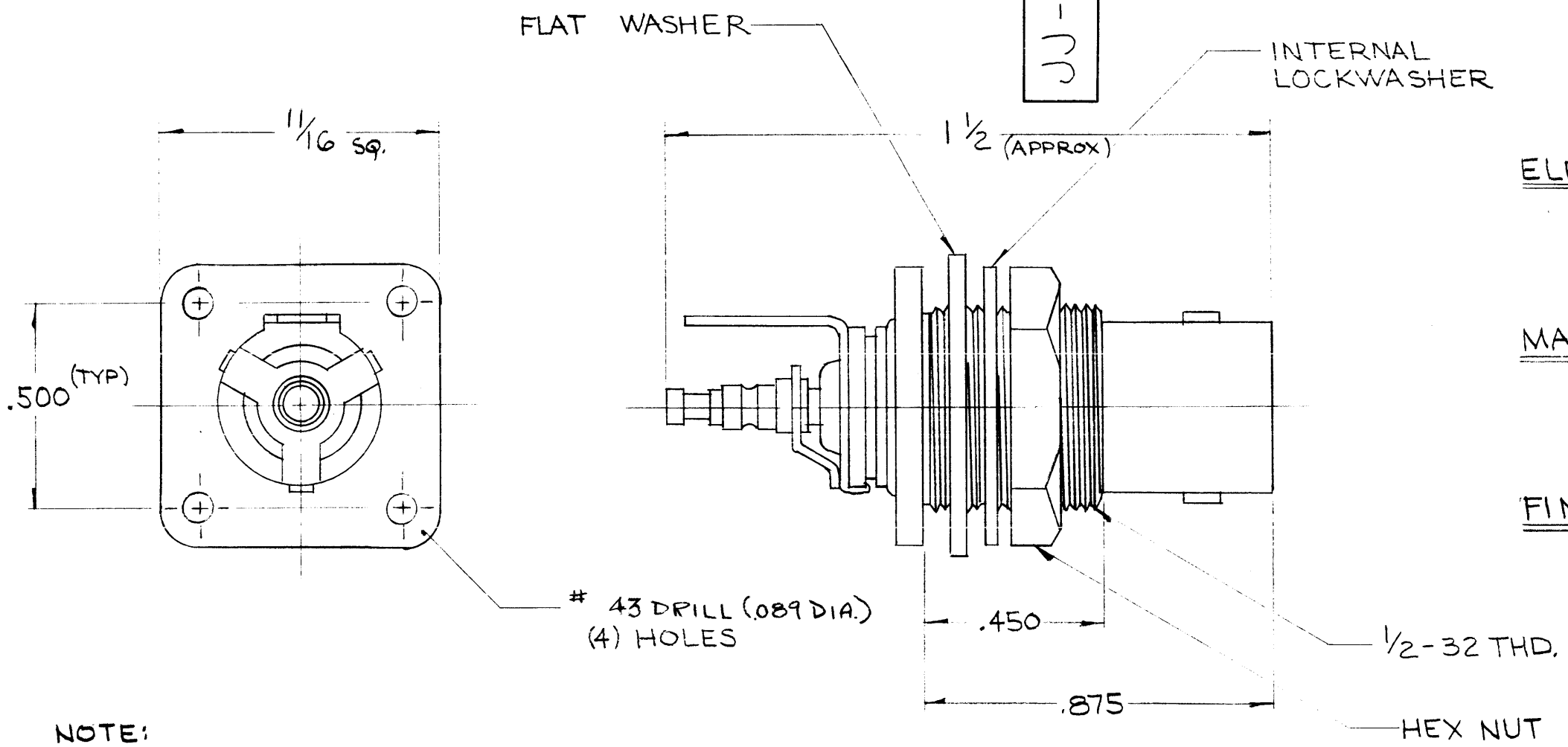
MAX. PEAK OPR. VOLT --- 500V
 FREQ. LIMIT --- 10,000 mc
 IMPEDANCE --- 50 OHMS

MATERIAL

EXTERNAL PARTS --- BRASS
 CONTACT --- BERYLLIUM COPPER
 LOCKWASHER --- PHOSPHOR BRONZE

FINISH

EXTERNAL PARTS --- SILVER
 PLATE & RHODIUM FLASH.
 CONTACT --- SILVER PLATE &
 GOLD FLASH.



NOTE:

- UPON ENGAGEMENT OF MATING CONNECTOR THE INSULATOR ASSEMBLY MOVES BACK 0.085
- CONNECTOR TO BE SUPPLIED WITH PLASTIC CAP MOUNTED, AND HARDWARE BULK PACKED.

US PATENT No. 2,767-267

REQ'D.	ITEM	PART NUMBER	DESCRIPTION	SYMBOL
LIST OF MATERIAL				
MATERIAL		SEE NOTES	THE TECHNICAL MATERIEL CORP. MAMARONECK, NEW YORK	
FINISH		SEE NOTES	TITLE CONNECTOR, RECEPTACLE, ELECTRICAL	
UNLESS OTHERWISE SPECIFIED DIMENSIONS ARE IN INCHES AND INCLUDE CHEMICALLY APPLIED OR PLATED FINISHES		DRAWN <i>[Signature]</i>	DATE 9/2/65	FINAL APPROVAL <i>[Signature]</i> DATE 9/3/65
DECIMALS .X ± .05 .XX ± .01 .XXX ± .005		TOLERANCES		FRACTIONS ± 1/64 ANGLES ± 0° 30'
THE CONTENTS OF THIS DRAWING ARE THE EXCLUSIVE PROPERTY OF THE TECHNICAL MATERIEL CORP. ITS UNAUTHORIZED USE OR REPRODUCTION IN WHOLE OR IN PART IS STRICTLY FORBIDDEN.		ELECT. DES. <i>[Signature]</i>	DATE 9-2-65	JJ-325 A
		MECH. DES. <i>[Signature]</i>	DATE 9-2-65	SHEET
				REV. LTR.

NOTES

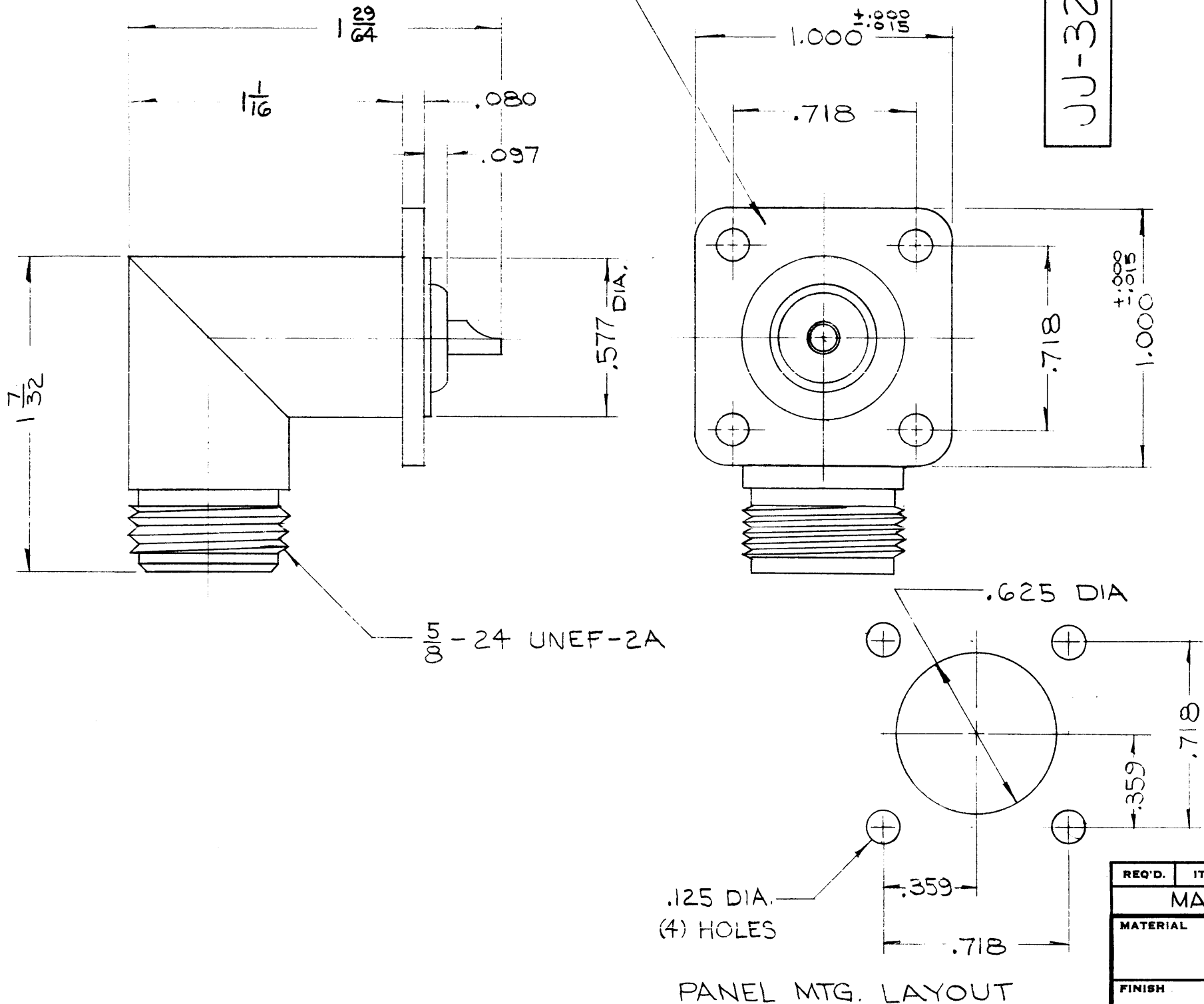
Q'TY./UNIT	MODEL USED ON	ASS'Y. NO.
SCALE 3:1	CODE	S401-70-2987

WHEN REQUIRED CUSTOMER IDENTIFICATION No TO BE METAL STAMPED 1/16 HIGH (OPPOSITE SIDE) SEE CUST DWG.

JJ-328

REVISIONS

SYM	DESCRIPTION	DATE	E.M.N. NO.	DRAFT	CHKD	APFD
Ø	ORIGINAL RELEASE FOR PRODUCTION	11-30-65	Ø			
A	"TMC PT/No" NOTE DELETED	7.15.66	16561	WFW	QCB	ML



SPECIFICATIONS
 SERIES "N"
 No OF CONTACTS = 1
 TYPE OF CONTACT = FEMALE
 DIELECTRIC = TEFLON

ELECTRICAL DATA:
 VOLTAGE BREAKDOWN - 500V AC
 NOM. IMPEDANCE - 50 Ω

MATERIAL:
 EXTERNAL PARTS = BRASS
 CONTACT = BERYLLIUM COPPER

FINISH:
 SILVER PLATED, .0002-.0003 THICK,

REQ'D.	ITEM	PART NUMBER	DESCRIPTION	SYMBOL
MARTINENGO LIST OF MATERIAL				
MATERIAL		SEE NOTE	THE TECHNICAL MATERIEL CORP. MAMARONECK, NEW YORK	
FINISH		SEE NOTE	TITLE CONNECTOR RECEPTACLE RIGHT ANGLE	
UNLESS OTHERWISE SPECIFIED DIMENSIONS ARE IN INCHES AND INCLUDE CHEMICALLY APPLIED OR PLATED FINISHES		DRAWN <i>R</i>	DATE 10/15/65	FINAL APPROVAL <i>[Signature]</i>
		CHECKED <i>QCB</i>	DATE 11/30/65	DATE 11/24/65
		ELECT. DES. <i>[Signature]</i>	DATE	
		MECH. DES. <i>[Signature]</i>	DATE 11/29/65	
		ML <i>[Signature]</i>	DATE 12/1/65	
SHEET				JJ-328
				A
				REV. LTR.

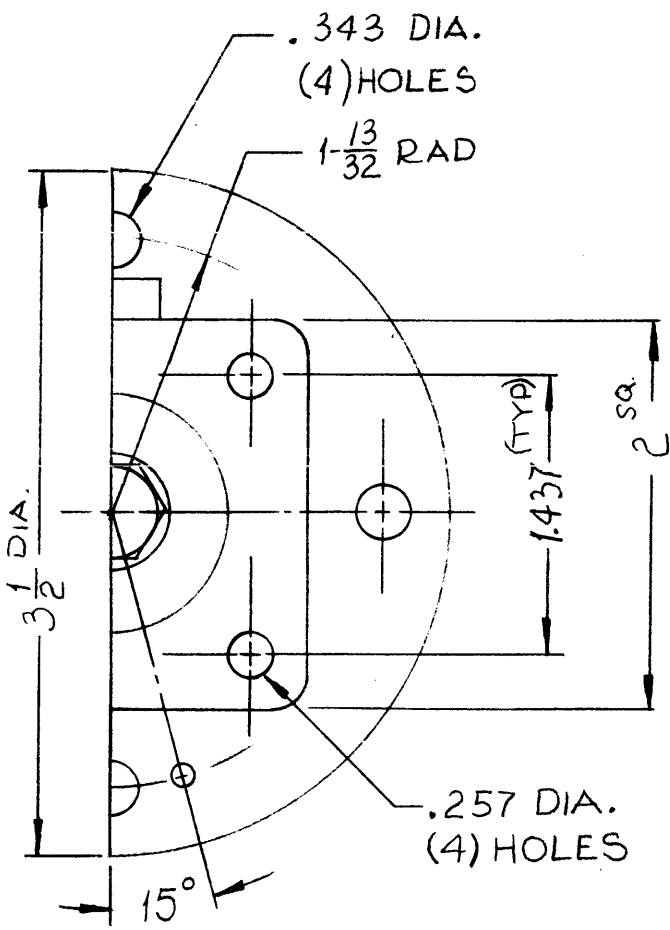
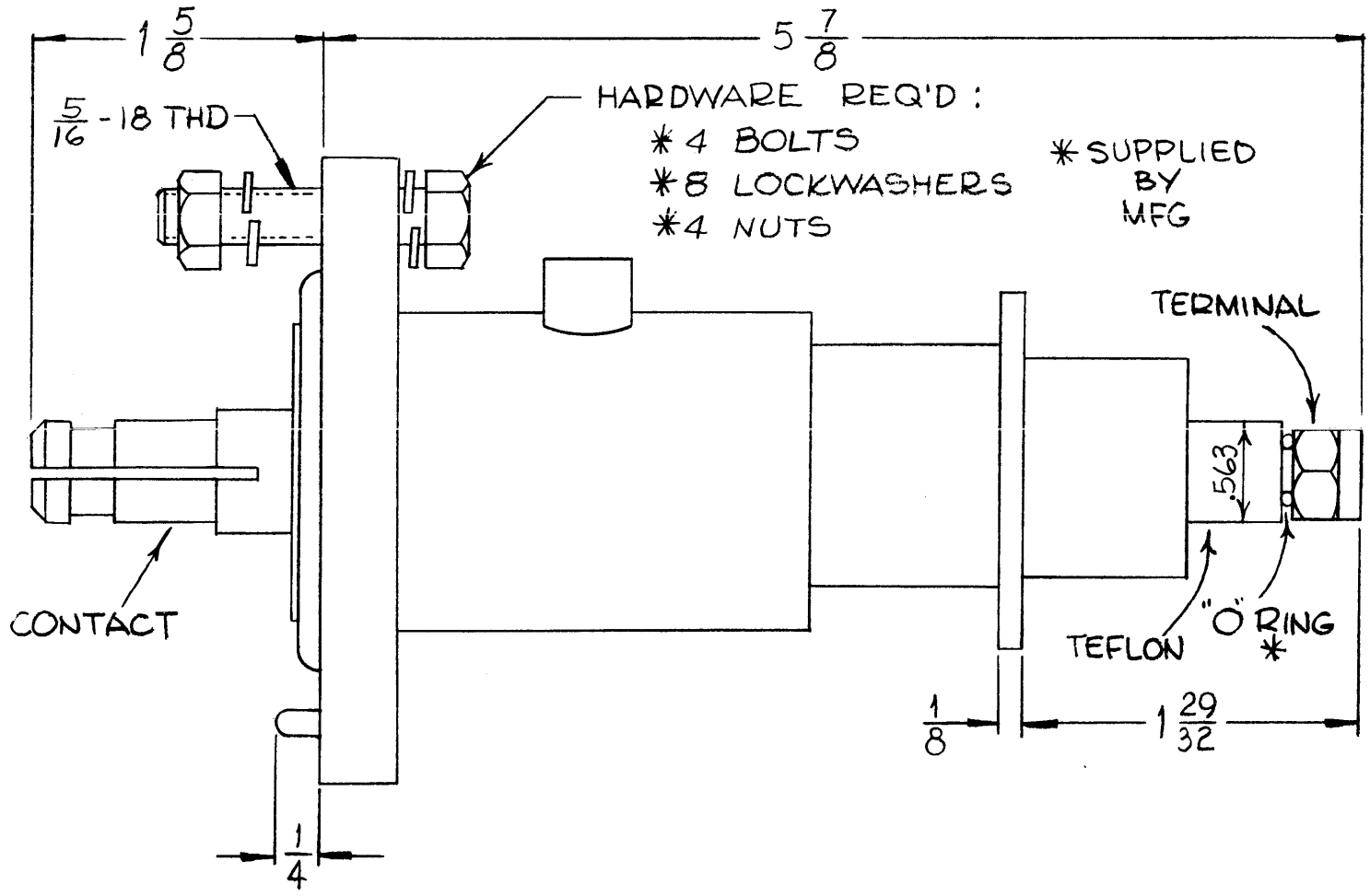
Q'TY./UNIT	MODEL USED ON	ASS'Y. NO.
SCALE 2:1	CODE	S401-70 (KS-19761LI)
THE CONTENTS OF THIS DRAWING ARE THE EXCLUSIVE PROPERTY OF THE TECHNICAL MATERIEL CORP. ITS UNAUTHORIZED USE OR REPRODUCTION IN WHOLE OR IN PART IS STRICTLY FORBIDDEN.		

NOTES

JJ329

REVISIONS

SYM	DESCRIPTION	DATE	E.M.N. NO.	DRAFT	CHKD	APPD
Ø	ORIGINAL RELEASE FOR PRODUCTION	1-9-67		W40		



SPECIFICATIONS

SERIES: E1A
 NO. OF CONTACTS: 1
 TYPE OF CONTACT: MALE
 DIELECTRIC: TEFLON

ELECTRICAL DATA

MAX PEAK VOLTAGE: 10,000
 FREQ. LIMIT: 1,000 MCS
 NOM IMPEDANCE: 50 Ω ONLY

MATING ACCOMMODATIONS

TYPE: E1A 51625

MATERIAL

EXTERNAL PARTS: BRASS
 TERMINAL: BRASS
 CONTACT: PHOSPHOR, BRONZE

FINISH

EXTERNAL PARTS: SILVER PLATE & RHODIUM
 CONTACT: NICKEL PLATE
 TERMINAL: SILVER PLATE & GOLD FLASH

*SUPPLIED BY MFG

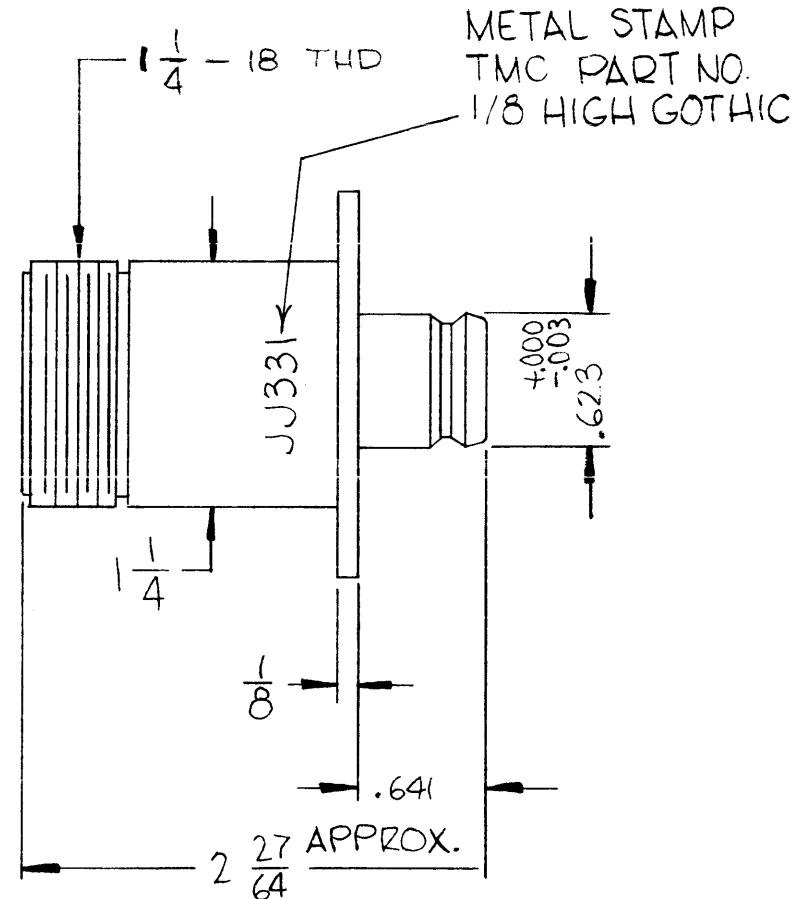
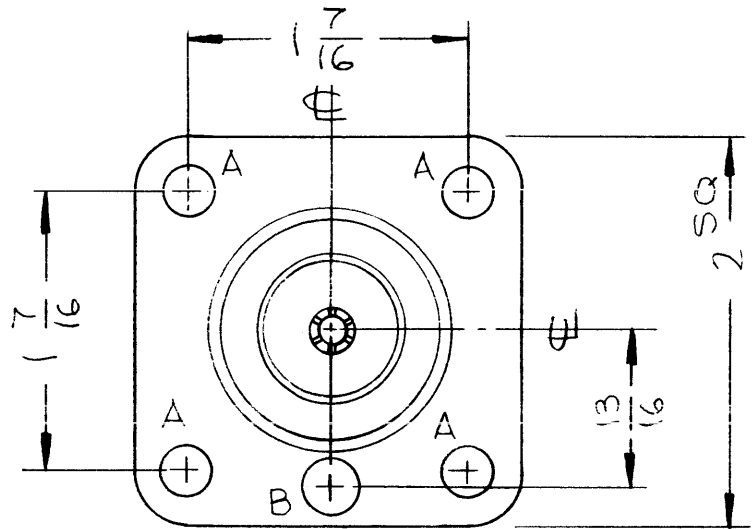
SCREW MACHINE-	SCH3118NR24	4 REQ
WASHER, LOCK, SPLIT-	LWS 31MR	8 REQ
NUT, HEXAGON-	NTH-3118NR16	4 REQ

REQ'D.	ITEM	PART NUMBER	DESCRIPTION	SYMBOL
OCTAVIO (CON. PROD) LIST OF MATERIAL				
MATERIAL			THE TECHNICAL MATERIEL CORP. MAMARONECK, NEW YORK	
FINISH			TITLE ADAPTOR CONNECTOR 1 5/8" 50Ω EIA (END SEAL)	
UNLESS OTHERWISE SPECIFIED DIMENSIONS ARE IN INCHES AND INCLUDE CHEMICALLY APPLIED OR PLATED FINISHES			DRAWN W40	DATE 4-18-66
DECIMALS .X ± .05 .XX ± .01 .XXX ± .005			CHECKED JC	DATE 12/5/66
FRACTIONS ± 1/64 ANGLES ± 0° 30'			ELECT. DES. JC	DATE
TOLERANCES			MECH. DES.	DATE
THE CONTENTS OF THIS DRAWING ARE THE EXCLUSIVE PROPERTY OF THE TECHNICAL MATERIEL CORP. ITS UNAUTHORIZED USE OR REPRODUCTION IN WHOLE OR IN PART IS STRICTLY FORBIDDEN.			FINAL APPROVAL W40 JJ329	
SCALE			SHEET	
MODEL USED ON CODE			REV. LTR.	
ASS'Y. NO. S401-70 (3919)			DATE 1/9/67	

NOTES

REVISIONS						
SYM	DESCRIPTION	DATE	E.M.N. NO.	DRAFT	CHKD	APPD
φ	ORIGINAL RELEASE FOR PRODUCTION	10/17/66	φ	CV		

JJ331



SPECIFICATIONS

SERIES: LC TO QDS
 No OF CONTACTS: 1
 TYPE OF CONTACT: FEMALE
 DIELECTRIC: TEFLON

MATERIAL

EXTERNAL PARTS: BRASS
 CONTACTS: BERYLLIUM COPPER

FINISH

EXTERNAL PARTS: SILVER PLATE & RHODIUM FLASH
 CONTACTS: SILVER PLATE & GOLD FLASH

HOLE	DESCRIPTION	REQ
A	.257 DIA	4
B	9/32 DIA	1

REQ'D.	ITEM	PART NUMBER	DESCRIPTION	SYMBOL
LIST OF MATERIAL				
MATERIAL		THE TECHNICAL MATERIEL CORP. MAMARONECK, NEW YORK		
FINISH		TITLE ADAPTOR, CONNECTOR "LC" (F) TO "QDS" (F)		
UNLESS OTHERWISE SPECIFIED DIMENSIONS ARE IN INCHES AND INCLUDE CHEMICALLY APPLIED OR PLATED FINISHES		DRAWN <i>WHL</i>	DATE 9.29.66	FINAL APPROVAL <i>[Signature]</i>
DECIMALS .X ± .05 .XX ± .01 .XXX ± .005		CHECKED <i>[Signature]</i>	DATE	DATE 10/17/66
FRACTIONS ± 1/64 ANGLES ± 0° 30'		ELECT. DES. <i>[Signature]</i>	DATE	
TOLERANCES		MECH. DES. <i>[Signature]</i>	DATE 10-19-66	
		DATE 10-17-66		
		WHL <i>[Signature]</i>	10-17-66	

QDP9C254		ASS'Y. NO.
Q'TY./UNIT	MODEL USED ON	
SCALE	CODE	S401-70(3931)
THE CONTENTS OF THIS DRAWING ARE THE EXCLUSIVE PROPERTY OF THE TECHNICAL MATERIEL CORP. ITS UNAUTHORIZED USE OR REPRODUCTION IN WHOLE OR IN PART IS STRICTLY FORBIDDEN.		

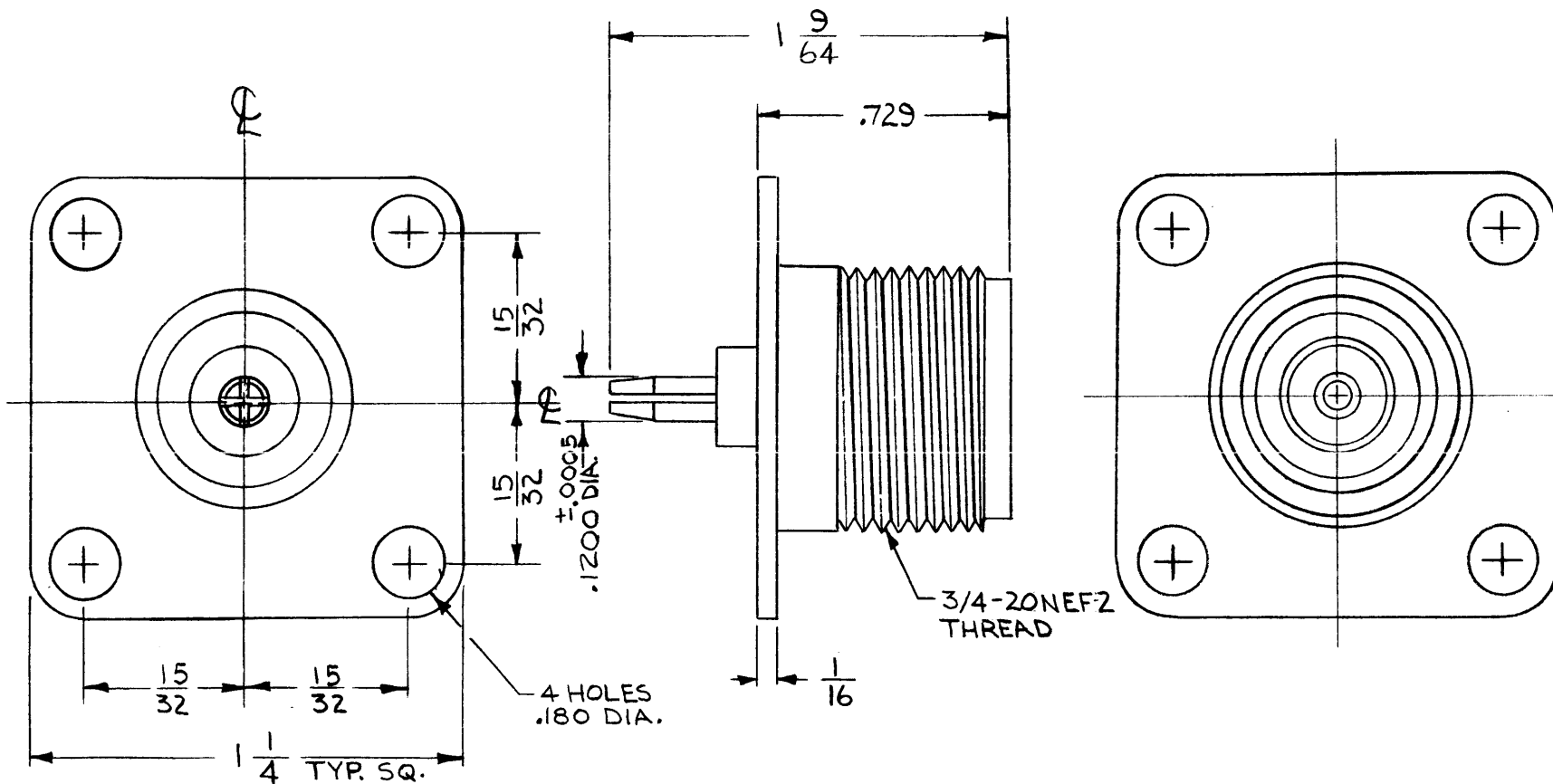
NOTES

STANDARD DRAWING

JJ 332

REVISIONS

SYM	DESCRIPTION	DATE	E.M.N. NO.	DRAFT	CHKD	APPD
X	EXPERIMENTAL RELEASE	10/28/66	X	RME		
Ø	ORIGINAL RELEASE FOR PRODUCTION	12/1/66	Ø	CV		



ELECTRICAL SPECIFICATIONS

IMPEDANCE : 50 Ω CONSTANT
 FREQUENCY RANGE : 0-10 GC
 VOLTAGE RATING : 1,500 VOLTS PEAK
 HIGH POTENTIAL : 5,000 VOLTS RMS.

MECHANICAL SPECIFICATIONS

MATING : 3/4-20 THREADED COUPLING
 DIELECTRIC : TEFLON
 MATERIAL : BRASS, NICKEL PLATED
 TYPE OF CONTACTS : FML
 STYLE : ROUND
 TYPE OF LOCKING : THREADED

REQ'D.	ITEM	PART NUMBER	DESCRIPTION	SYMBOL
BUDETTI LIST OF MATERIAL				
MATERIAL		SEE SPECS		
FINISH		THE TECHNICAL MATERIEL CORP. MAMARONECK, NEW YORK		
TITLE		CONNECTOR, ELECTRICAL, RF, "HN"		
UNLESS OTHERWISE SPECIFIED DIMENSIONS ARE IN INCHES AND INCLUDE CHEMICALLY APPLIED OR PLATED FINISHES		DRAWN	DATE	FINAL APPROVAL
DECIMALS .X ± .05 .XX ± .01 .XXX ± .005		RME	10/28/66	
FRACTIONS ± 1/64 ANGLES ± 0° 30'		CHECKED	DATE	
TOLERANCES		JL	11/29/66	12/1/66
		ELECT. DES.	DATE	JJ 332
		MECH. DES.	DATE	Ø
		M/L	12/6/66	REV. LTR.

Q'TY./UNIT	TST 2.5K	ASS'Y. NO.
SCALE	MODEL USED ON	
2:1	CODE	S401-164 (424073)

NOTES

THE CONTENTS OF THIS DRAWING ARE THE EXCLUSIVE PROPERTY OF THE TECHNICAL MATERIEL CORP. ITS UNAUTHORIZED USE OR REPRODUCTION IN WHOLE OR IN PART IS STRICTLY FORBIDDEN.

5

4

3

2

1

REVISIONS							
ZONE	LTR	DESCRIPTION	DATE	E.M.N.NO	DRAFT	CHKD	APPD
	Ø	ORIG RELEASE FOR PROD	4-18-67		RG		
	A	NICKEL PLT WAS SILV.	5-29-69	1947	GE	JW	FB

SPECIFICATIONS

TYPE: ADAPTER, ~~PANEL MOUNT~~

NO. OF CONTACTS: 1

NO. OF MOUNTING ENDS: 1

CONTACT DATA:
 TYPE OF CONTACT: FEMALE
 QUANTITY: 1
 STYLE: LONGITUDINALLY SLOTTED SLEEVE

TYPE OF CONTACT: MALE
 QUANTITY: 1
 STYLE: LONGITUDINALLY SLOTTED PIN

MATERIAL & FINISH: BERYLLIUM COPPER, SILVER PLATE

DIELECTRIC: TEFLON, TFE

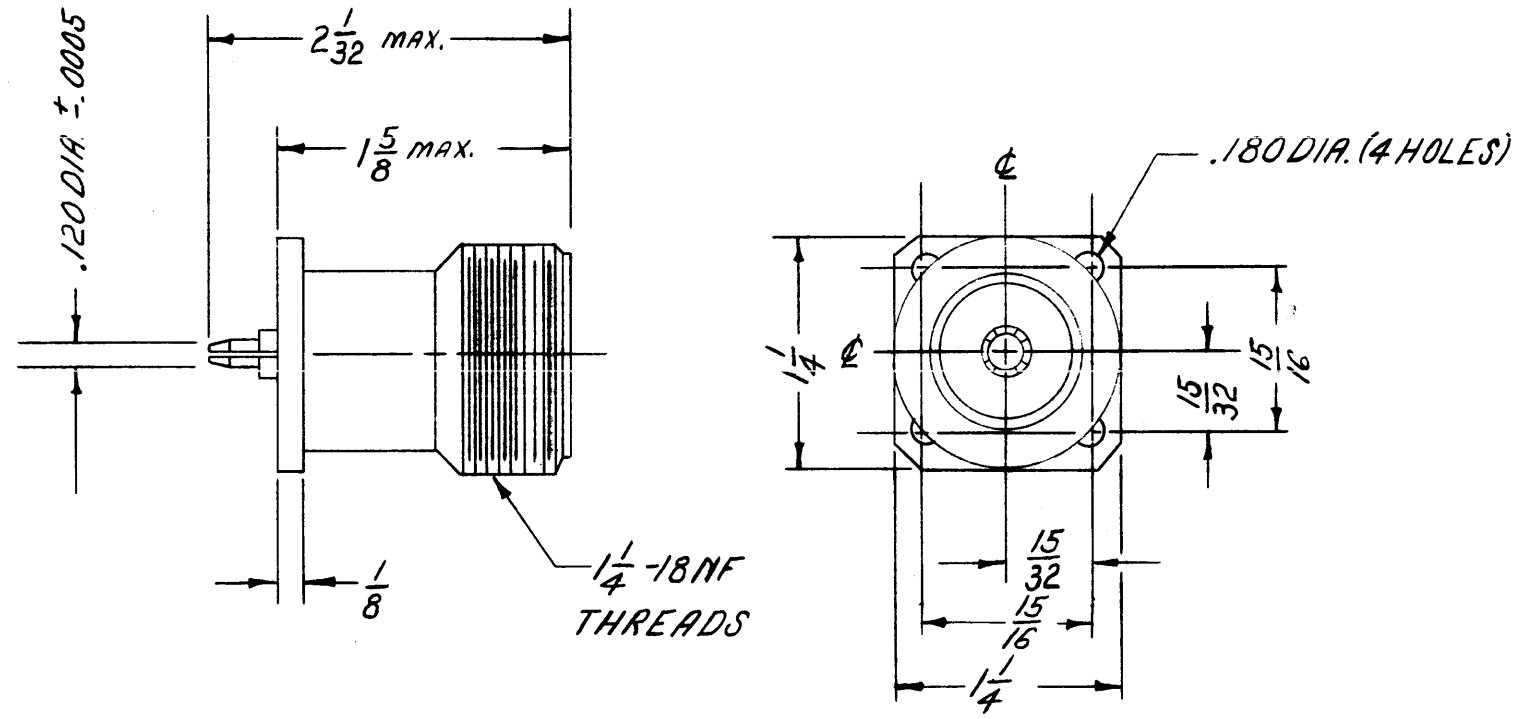
IMPEDANCE: 50 OHMS

SEALING: NONE

THREAD SIZE: 1 1/4 - 18 NEF2A

BODY MATERIAL & FINISH: BRASS, NICKEL PLATE

USED WITH: DC 106



REQ'D	ITEM	PART NUMBER	DESCRIPTION	SYM.
LIST OF MATERIAL				
THE TECHNICAL MATERIEL CORP. MAMARONECK, NEW YORK				
CONNECTOR, ADAPTER, FEMALE "LC."				
SIZE		CODE IDENT. NO.	DWG NO.	ISSUE
B		82679	JJ334	A
SCALE		SHEET		OF
		12		

1	RAK III-2	
QTY / UNIT	MODEL USED ON	ASS'Y NO.
APPLICATION		
S401-	CODE	S401-164 (OL-42403)
S401-70		

NOTICE TO PERSONS RECEIVING THIS DRAWING
 THE TECHNICAL MATERIEL CORPORATION claims proprietary right in the material disclosed hereon. This drawing is issued in confidence for engineering information only and may not be reproduced or used to manufacture anything shown hereon without permission from THE TECHNICAL MATERIEL CORPORATION to the user. This drawing is loaned for mutual assistance and is subject to recall at any time.

UNLESS OTHERWISE SPECIFIED DIMENSIONS ARE IN INCHES AND INCLUDE CHEMICALLY APPLIED OR PLATED FINISHES

DECIMALS	FRACTIONS	TOLS.	ANGLES
.X \pm .05	1/64		
.XX \pm .01			
.XXX \pm .005			0° .30'

MATERIAL

FINISH

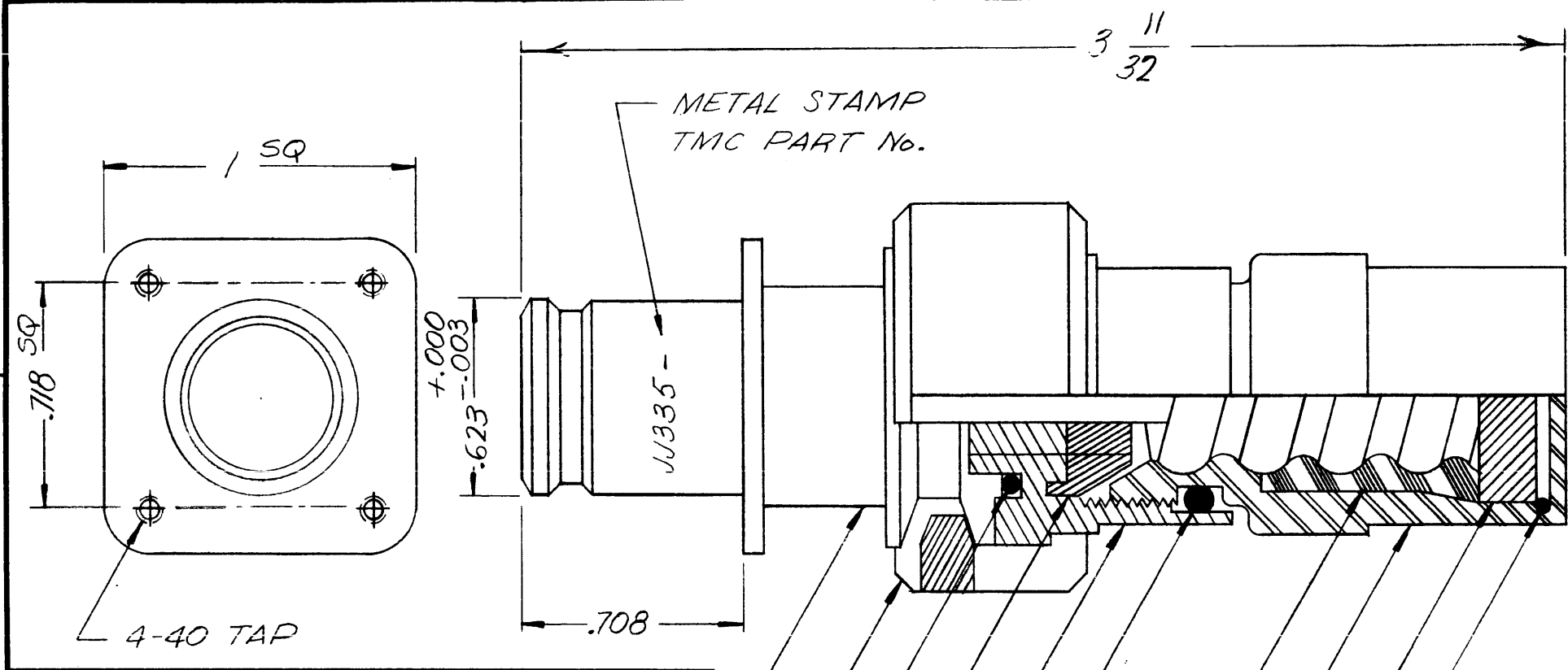
FINAL APPROV. *[Signature]* DATE 7/18/67

MECH. DES. *[Signature]* DATE 7-18-67

ELECT. DES. DATE

CHECKED *[Signature]* DATE 1-24-67

DRAWN L.A.K. DATE 1-27-67



REVISIONS						
ZONE	LTR	DESCRIPTION	DATE	E.M.N.NO	DRAFT	CHKD APPD
	X	EXPERIMENTAL RELEASE	3.13.67		LHD	
	Ø		3/12/67	Ø	CV	

~ NOTES ~
 1 - THE FOLLOWING ITEMS SUPPLIED BY (S401-31)
 ITEM No. 1 - No. 27517 CLAMP NUT
 2 - No. 21842 GASKET
 3 - No. 22531 SUPPORT BAND
 4 - No. 22532 RETAINING RING
 ITEM No. 6 - No. 27518 FLARE RING
 2 - TMC WILL SUPPLY ITEM 11 & 12
 3 ALL OTHER ITEMS SUPPLIED BY (S401-70) AS AN ASSEMBLY, -No.3934.

SPECIFICATIONS

SERIES: QDS
 No. & TYPE CONTACT: (1) FEMALE
 DIELECTRIC: TEFLON
 ELECTRICAL DATA
 MAX. PEAK OPER VOLTAGE: 5KV
 IMPEDANCE NOM: 50 Ω
 MATERIAL
 EXTERNAL PARTS: BRASS
 CONTACT: BERYLLIUM COPPER
 FINISH
 EXT. PARTS: SIL. PLATE RHODIUM
 FLASH
 CONTACTS: SIL. PLATE & GOLD FLASH
 MATING ACCOMMODATIONS
 CABLE: 1/2" HELIAX - 50 Ω
 HJ4-50 HTJ4-50
 ANDREWS CORP

REQ'D	ITEM	PART NUMBER	DESCRIPTION	SYM.
1	12	SI174	INSTRUCTION ASS'Y	
1	11	WR100-4	WRENCH HEX	
1	10	SEE NOTE 3	BODY ADAPTOR	
1	9		CLAMP "V" RING	
1	8		"O" RING No 2	
1	7	SEE NOTE 3	CLAMP NUT	
1	6	SEE NOTE 1	RING FLARE	
1	5	SEE NOTE 3	"O" RING No 1	
1	4		RING, BAND RETAINING	
1	3		BAND GASKET SUPPORT	
1	2		GASKET, CABLE	
1	1	SEE NOTE 1	CLAMP, CABLE	

MARTIN ENGO		LIST OF MATERIAL	
FINAL APPROV	DATE 3-17-67	THE TECHNICAL MATERIEL CORP.	
MECH. DES	DATE 3-17-67	MAMARONECK, NEW YORK	
ELECT. DES.	DATE	CONNECTOR, PANEL JACK	
CHECKED	DATE	QDS TO 1/2" HELIAX 50 Ω	
DRAWN	DATE 3-13-67	SIZE B	CODE IDENT. NO. 82679
		DWG NO. JJ335	ISSUE Ø
		SCALE	SHEET OF

QTY / UNIT	MODEL USED ON	ASS'Y NO.
APPLICATION		
CODE		

UNLESS OTHERWISE SPECIFIED DIMENSIONS ARE IN INCHES AND INCLUDE CHEMICALLY APPLIED OR PLATED FINISHES

DECIMALS	FRACTIONS
.X ± .05	1/64
.XX ± .01	TOLS. ANGLES
.XXX ± .005	0° .30'

MATERIAL SEE SPECS
 FINISH SEE SPECS

NOTICE TO PERSONS RECEIVING THIS DRAWING
 THE TECHNICAL MATERIEL CORPORATION claims proprietary right in the material disclosed hereon. This drawing is issued in confidence for engineering information only and may not be reproduced or used to manufacture anything shown hereon without permission from THE TECHNICAL MATERIEL CORPORATION to the user. This drawing is loaned for mutual assistance and is subject to recall at any time.

REVISIONS					
SYM	DESCRIPTION	DATE	E.M.N. NO.	DRAFT	CHKD APPD
X	EXP. RELEASE	3-29-67		<i>M/S</i>	
X1	REMOVED HFSR-4	11-10-67		<i>Hes.</i>	<i>M/S</i>
X2	MOD. VOX-7 ADDED	11-29-67		<i>G.O.L.</i>	
Ø	ORIG. RELEASE FOR PROD.	10/15/68	Ø	<i>R.G.</i>	<i>J.O.</i>

JJ336

TMC P/N	MFG P/N	CONNECTOR TYPE	CONTACT INFORMATION					BODY INFORMATION					POLARIZING KEY	
			QUANTITY	MATERIAL	TYPE	TERMINATION	SPACING	LENGTH	WIDTH	HEIGHT EXCLUDING	MOUNTING CENTERS	MOUNTING STYLE		MATERIAL
JJ336-1	K600-121-15XA	EDGE PC BOARD	15 DUAL ROW	PHOSPHER BRONZE GOLD PLATE	BELLOWS FORM	SOLDER LUG	.100	2.37	.410	.530	2.08	CLEAR HOLE	DIALYL PHTHALATE COLOR-GREEN	MFG P/N 602-25

REQ'D.	ITEM	PART NUMBER	DESCRIPTION	SYMBOL
O. POSE LIST OF MATERIAL				
MATERIAL			THE TECHNICAL MATERIEL CORP. MAMARONECK, NEW YORK	
FINISH			TITLE CONNECTOR, RECEPTACLE ELECTRICAL P/C BOARD	
UNLESS OTHERWISE SPECIFIED DIMENSIONS ARE IN INCHES AND INCLUDE CHEMICALLY APPLIED OR PLATED FINISHES			DRAWN <i>M/S</i> DATE 3-29-67 CHECKED <i>H.A.O.</i> DATE 10/22/68 ELECT. DES. DATE MECH. DES. DATE	FINAL APPROVAL <i>[Signature]</i> DATE JJ336 SHEET REV. LTR.

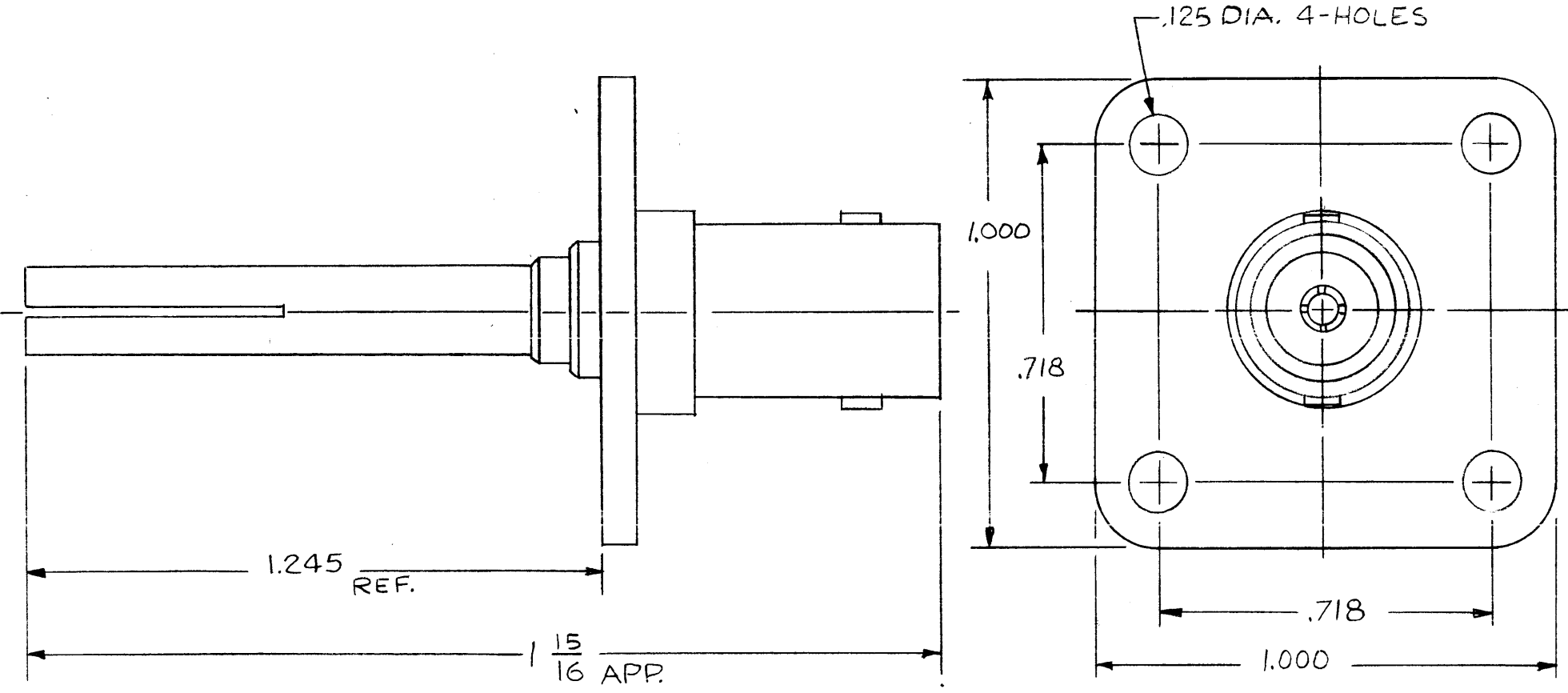
	VOX-7	
	MM X-()	
Q'TY./UNIT	MODEL USED ON	ASS'Y. NO.
SCALE	CODE C	

NOTES

THE CONTENTS OF THIS DRAWING ARE THE EXCLUSIVE PROPERTY OF THE TECHNICAL MATERIEL CORP. ITS UNAUTHORIZED USE OR REPRODUCTION IN WHOLE OR IN PART IS STRICTLY FORBIDDEN.

DECIMALS .X ± .05 .XX ± .01 .XXX ± .005
 FRACTIONS ± 1/64 ANGLES ± 0° 30'
 TOLERANCES

REVISIONS						
ZONE	LTR	DESCRIPTION	DATE	E.M.N.NO	DRAFT	CHKD APPD
	X	EXP. RELEASE	1/8/68	+	HS	<i>[Signature]</i>
	Ø	ORIG. RELEASE FOR PROD	1/25/67	Ø	C.V.	<i>[Signature]</i>



SPECIFICATIONS

SERIES - BNC-70
 NO. OF CONTACTS - ONE (1)
 TYPE OF CONTACT - FEMALE
 DIELECTRIC - TEFLON

ELECTRICAL DATA

MAX. PEAK OPR. VOLT - 500 V
 NOM. IMPEDANCE - 70 OHMS

MATING ACCOMODATIONS

TCA-85 / BNC

MATERIAL

EXT. PARTS - BRASS
 CONTACT - BERYLLIUM COPPER

FINISH

EXT. PARTS - SILVER PLATE & RHODIUM FLASH
 CONTACT - SILVER PLATE & GOLD FLASH

REQ'D	ITEM	PART NUMBER	DESCRIPTION	SYM.
-------	------	-------------	-------------	------

AL. MARTINENGO LIST OF MATERIAL

THE TECHNICAL MATERIEL CORP.
 MAMARONECK, NEW YORK

CONNECTOR, RECEPTACLE

MECH. DES.	DATE	ELECT. DES.	DATE
<i>[Signature]</i>	1-23-68	<i>[Signature]</i>	1-24-68
CHECKED	DATE	DRAWN	DATE
<i>[Signature]</i>	1-24-68	<i>[Signature]</i>	1/18/68

—	TCA-85/BNC	
QTY / UNIT	MODEL USED ON	ASS'Y NO.
	APPLICATION	
	CODE	S401-70(3949)

NOTICE TO PERSONS RECEIVING THIS DRAWING
 THE TECHNICAL MATERIEL CORPORATION claims proprietary right in the material disclosed hereon. This drawing is issued in confidence for engineering information only and may not be reproduced or used to manufacture anything shown hereon without permission from THE TECHNICAL MATERIEL CORPORATION to the user. This drawing is loaned for mutual assistance and is subject to recall at any time.

UNLESS OTHERWISE SPECIFIED DIMENSIONS ARE IN INCHES AND INCLUDE CHEMICALLY APPLIED OR PLATED FINISHES

DECIMALS	FRACTIONS
.X ± .05	1/64
.XX ± .01	TOLS. ANGLES
.XXX ± .005	0° - 30'

MATERIAL SEE SPECS

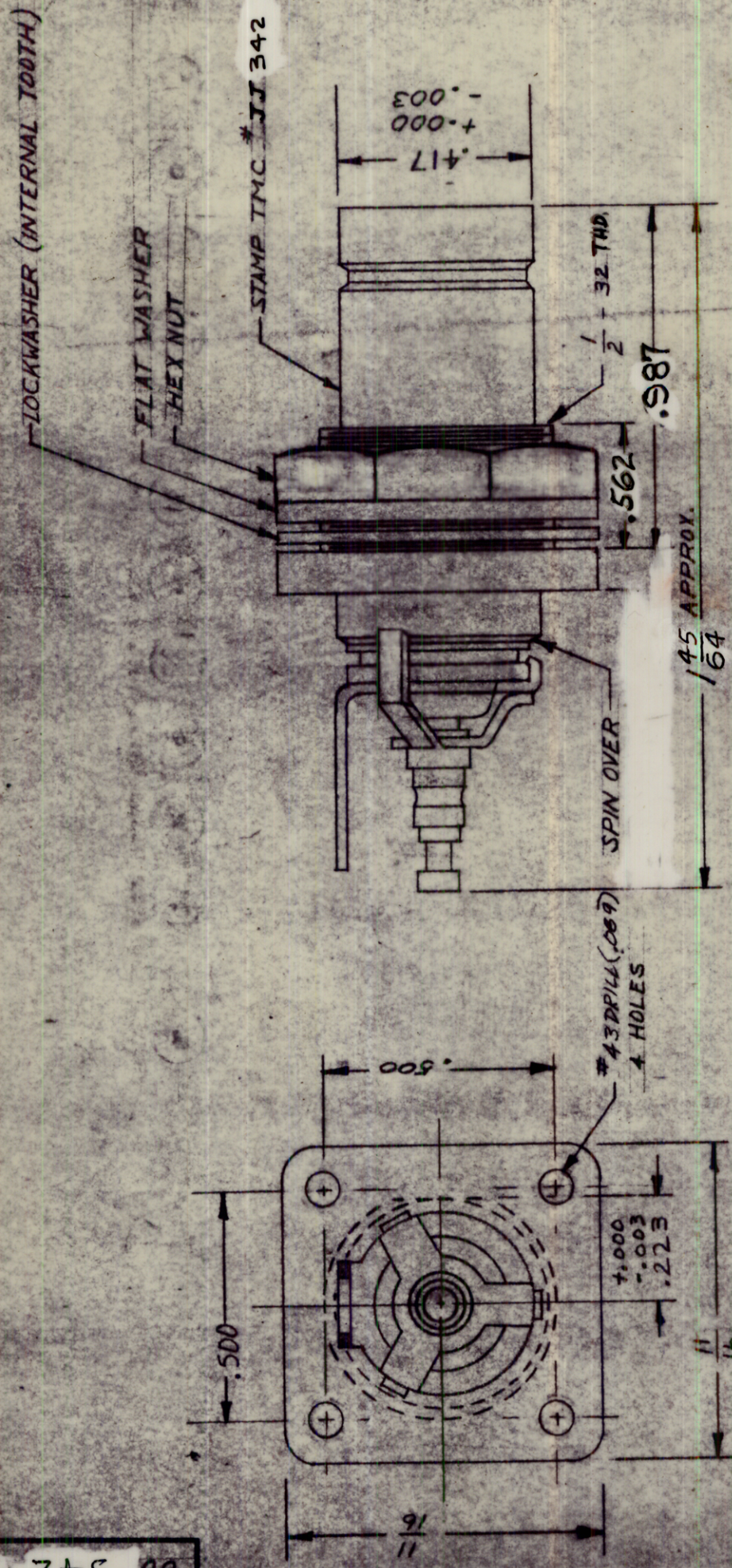
FINISH SEE SPECS

SIZE	CODE IDENT. NO.	DWG NO.	ISSUE
B	82679	JJ 338	Ø

SCALE — SHEET OF

THE CONTENTS OF THIS DRAWING ARE THE EXCLUSIVE PROPERTY OF THE TECHNICAL MATERIEL CORP. ITS UNAUTHORIZED USE OR REPRODUCTION IN WHOLE OR IN PART IS STRICTLY FORBIDDEN.

342



NOTE:
 1 UPON ENGAGEMENT OF MATING CONNECTOR THE INSULATOR ASSEMBLY MOVES BACK 0.085
 2 CONNECTOR TO BE SUPPLIED WITH PLASTIC CAP MOUNTED AND HARDWARE BULK PACKED.

ASSIGNED PATENT No. 2,767,267

SPECIFICATIONS

SERIES - QDM-70
 NO. OF CONTACTS - ONE (1)
 TYPE OF CONTACTS - SWITCH TYPE
 DIELECTRIC - TEFLON

ELECTRICAL DATA

MAX PEAK VOLTAGE - 500 V
 FREQ. LIMIT - 10,000
 NOM. IMPEDANCE - 70 OHMS

MATING ACCOMMODATIONS

TYPE - QDM - PL 255
 MAX. O.D. -
 IMPEDANCE - 70 OHMS

MATERIAL

EXTERNAL PARTS - BRASS
 CONTACTS - BERYLLIUM COPPER

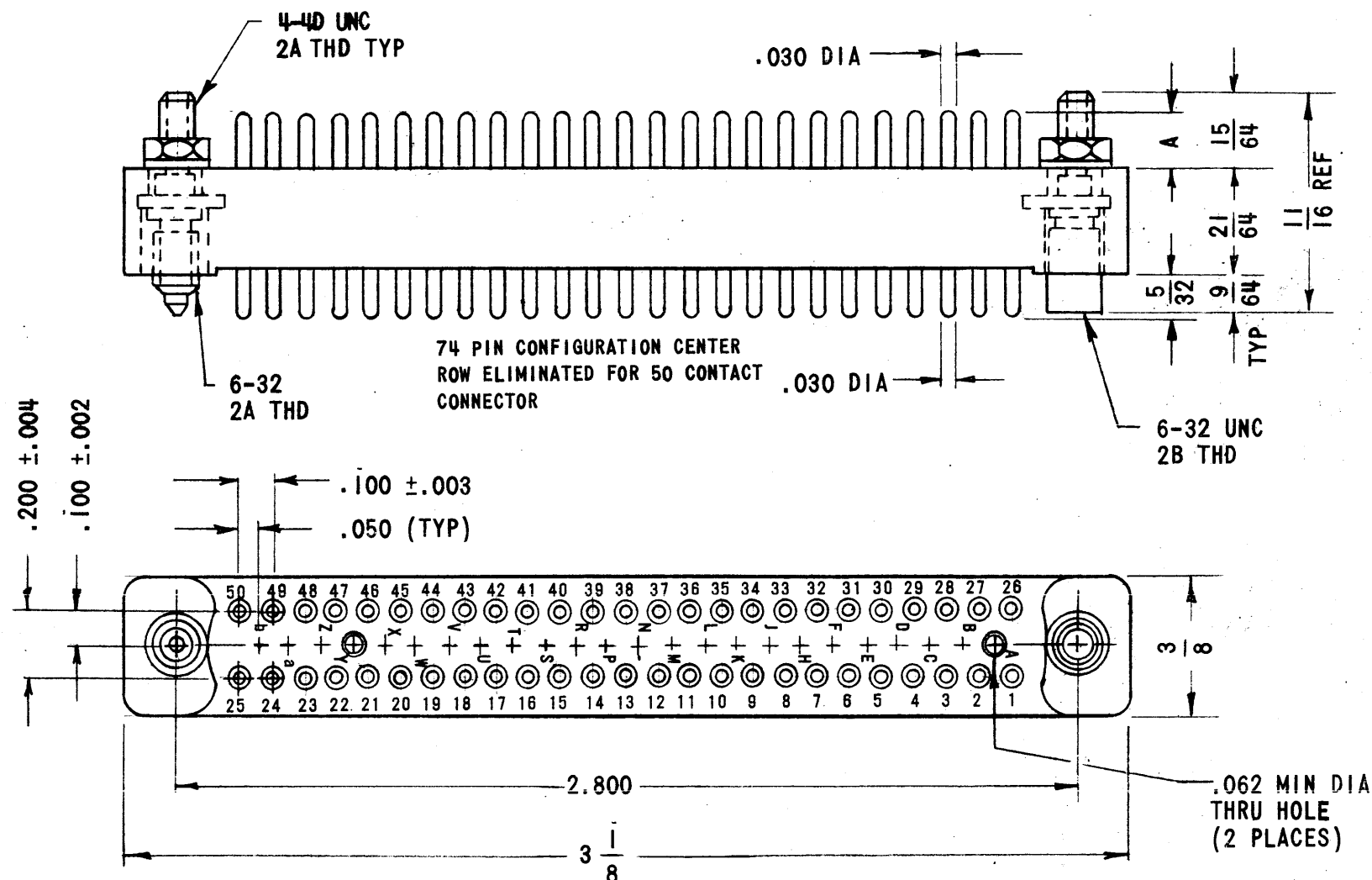
FINISH

EXTERNAL PARTS - SILVER PLATE & RHODIUM FLASH
 CONTACTS - SILVER PLATE & GOLD FLASH

SYM	DESCRIPTION	DATE	CH. NO.	DRAFTS	Ø	R. G.	CHECKER	ENG. APP.
Ø	ORIGINAL RELEASE FOR PROD.	2-5-68						
UNLESS OTHERWISE SPECIFIED:								
DIMENSIONS ARE IN INCHES								
TOLERANCES ON FRACTIONS ± 1/64 DECIMALS ± .005 ANGLES ± 1/20								
MAXIMUM ALLOWABLE TOLERANCES HAVE BEEN DETERMINED AND ANY DEVIATIONS WILL BE CAUSE FOR REJECTION. REMOVE ALL BURRS AND SHARP EDGES								
SCALE:	5401-70	3951						

REQ. ITEM	PART NO.	DESCRIPTION	SYMBOL
SEE NOTE		THE TECHNICAL MATERIEL CORP. MAMARONECK, NEW YORK	
MATERIAL		CONNECTOR, RECEPTACLE, ELECTRICAL	
TYPE & TEMPER	HEAT TREAT. SPEC.	CHECKED	FINAL APPROVAL
SEE NOTE			
FINISH & SPEC. NO.		ELEC. DES. APP. MECH. DES. APP.	

REVISIONS						
ZONE	LTR	DESCRIPTION	DATE	E.M.N.NO	DRAFT	CHKD APPD
	X	EXPERIMENTAL RELEASE	4/15/68			C.V.
	X1	TMC DWG NO WAS PL 257	5/10/68	X1		R.G.
	Ø	ORIG. RELEASE FOR PROD	10-21-68			



SPECIFICATIONS

NO. OF CONTACTS: 50,74

CONTACTS: PHOSPHOR BRONZE PLATED GOLD

CURRENT RATING: 5 AMPS

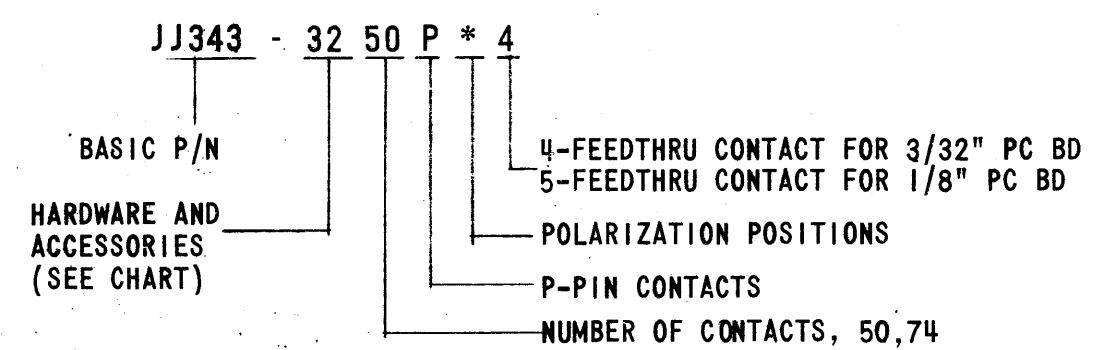
MAX VOLTAGE DROP: 20 MV AT 5 AMPS

OPERATING VOLTAGE: 500 VDC AT SEA LEVEL

POLARIZATION: AVAILABLE IN 50 CONTACT CONFIGURATION ONLY. CHOICE OF 24 CENTER POSITIONS.

DIELECTRIC: MACROON MINERAL FILLED DIALLYL PHTHALATE PER MIL-M-14,MDG

TMC PART NUMBER WILL BE IN THE FOLLOWING FORM:



*POLARIZATION IS AVAILABLE IN ANY COMBINATION OF THE 24 CENTER POSITIONS SHOWN IN THE OUTLINE DRAWING. SPECIFY POLARIZING POSITIONS REQUIRED. POSITIONS TOP TO BOTTOM ARE: A,B,C,D,E,F,H,J,K,L,M,N,P,R,S,T,U,V,W,X,Y,Z,a,b.

HARDWARE & ACCESSORIES	
CODE	DESCRIPTION
30	NO HARDWARE
31	GUIDES
32	FIXED JACKSCREWS AND JACKSOCKET
33	SHORT TURNING JACKSCREWS
47	FIXED JACKSOCKETS
50	GUIDE SOCKETS
60	TURNABLE JACKSOCKETS
61	TURNABLE JACKSCREWS

REF: MATES WITH PL257

2	HFRR-4	A4662
QTY / UNIT	MODEL USED ON	ASS'Y NO.
APPLICATION		
	CODE	S401-441

NOTICE TO PERSONS RECEIVING THIS DRAWING

THE TECHNICAL MATERIEL CORPORATION claims proprietary right in the material disclosed hereon. This drawing is issued in confidence for engineering information only and may not be reproduced or used to manufacture anything shown hereon without permission from THE TECHNICAL MATERIEL CORPORATION to the user. This drawing is loaned for mutual assistance and is subject to recall at any time.

UNLESS OTHERWISE SPECIFIED DIMENSIONS ARE IN INCHES AND INCLUDE CHEMICALLY APPLIED OR PLATED FINISHES		FINAL APPROVAL	DATE
DECIMALS .X ± .05 .XX ± .01 .XXX ± .005	FRACTIONS 1/64 TOLS. ANGLES 0° .30'	MECH. DES.	DATE
MATERIAL	ELECT. DES.	CHECKED	DATE
FINISH	DRAWN	DATE	DATE

REQ'D	ITEM	PART NUMBER	DESCRIPTION	SYM.
LIST OF MATERIAL				
THE TECHNICAL MATERIEL CORP. MAMARONECK, NEW YORK				
CONNECTOR, RECEPTACLE, ELECTRICAL (P/C BD MTG) 3/32 & 1/8 BDS.)				
SIZE	CODE IDENT. NO.	DWG NO.	ISSUE	
B	82679	JJ343	Ø	
SCALE	SHEET		OF	
2:1				

REVISIONS

ZONE	LIR	DESCRIPTION	DATE	E.M.N. NO	DRAFT	CHKD	APPD
	Ø	ORIGINAL RELEASE	6/10/69	Ø	De		De

Specifications

Series - BNC-70 (switch)
 No. of contacts - one (1)
 Type of contact - female
 Dielectric - Teflon

Electrical Data

Max. peak volt. - 500v
 Freq. limit - 10,000MHz
 Nom. impedance - 70 ohms

Dimensions shown with switch closed (normal).
 Movement of insulator assembly backward
 at engagement - 0.085".

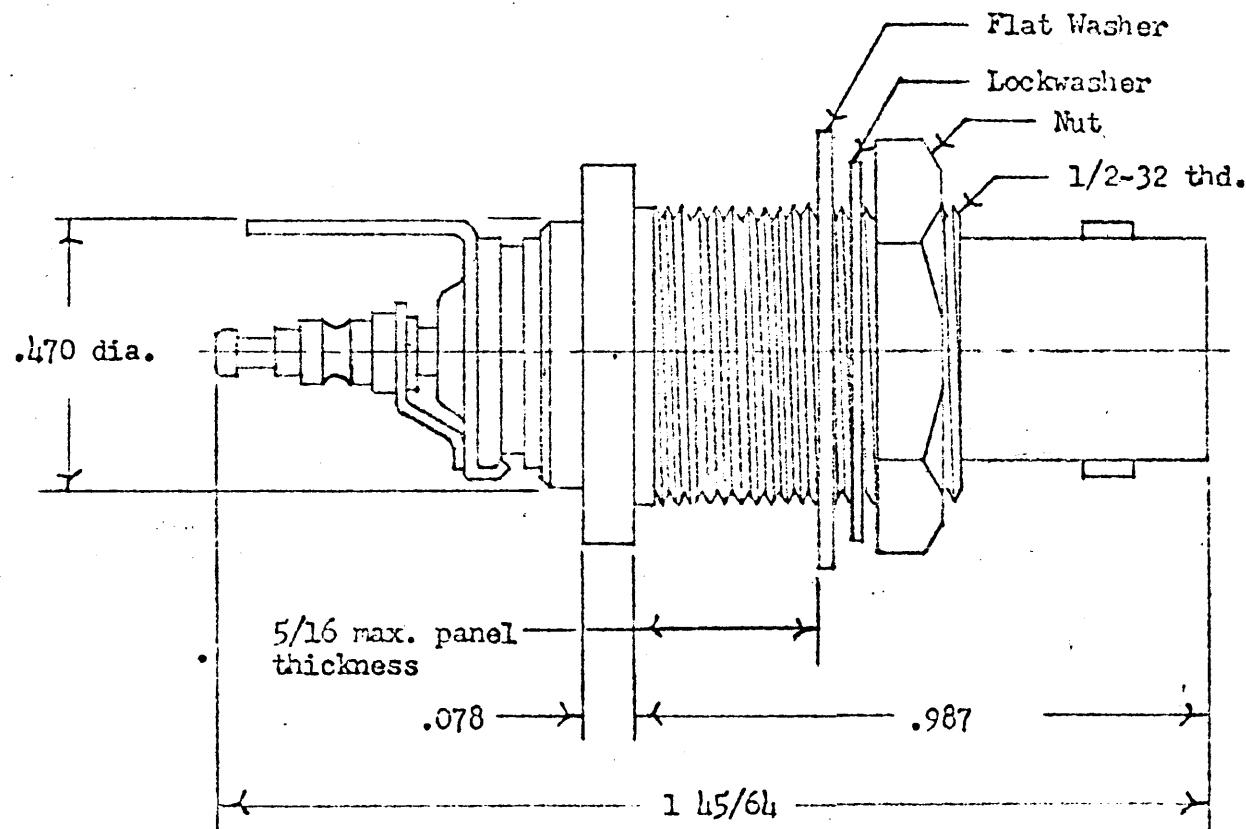
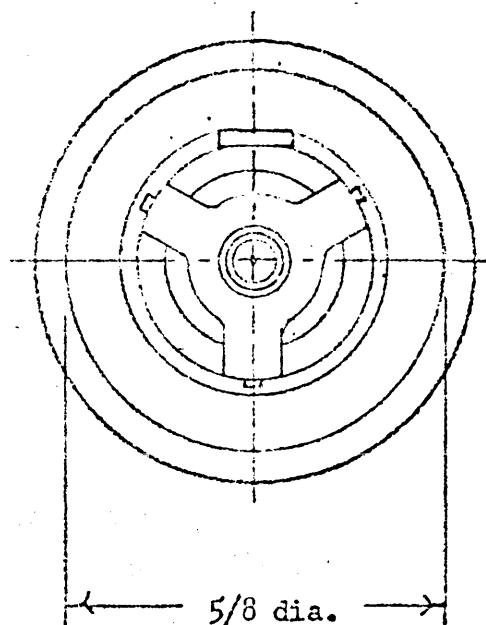
Material

External parts - brass
 Contact - beryllium copper
 Lockwasher - phosphor bronze

Finish

External parts - silver plate & rhodium flash
 Contact - silver plate & gold flash

Note: CAUTION: USE BNC MATING
 SERIES 70 OHM CONNECTER



A/R	SW489	
A/R	SW484	
A/R	SW483	
A/R	SW477	
QTY / UNIT	MODEL USED ON	ASS'Y NO.

APPLICATION

CODE

NOTICE TO PERSONS RECEIVING THIS DRAWING
 THE TECHNICAL MATERIEL CORPORATION claims proprietary right in the material disclosed hereon. This drawing is issued in confidence for engineering information only and may not be reproduced or used to manufacture anything shown hereon without permission from THE TECHNICAL MATERIEL CORPORATION to the user. This drawing is loaned for mutual assistance and is subject to recall at any time.

UNLESS OTHERWISE SPECIFIED
 DIMENSIONS ARE IN INCHES
 AND INCLUDE CHEMICALLY APPLIED
 OR PLATED FINISHES

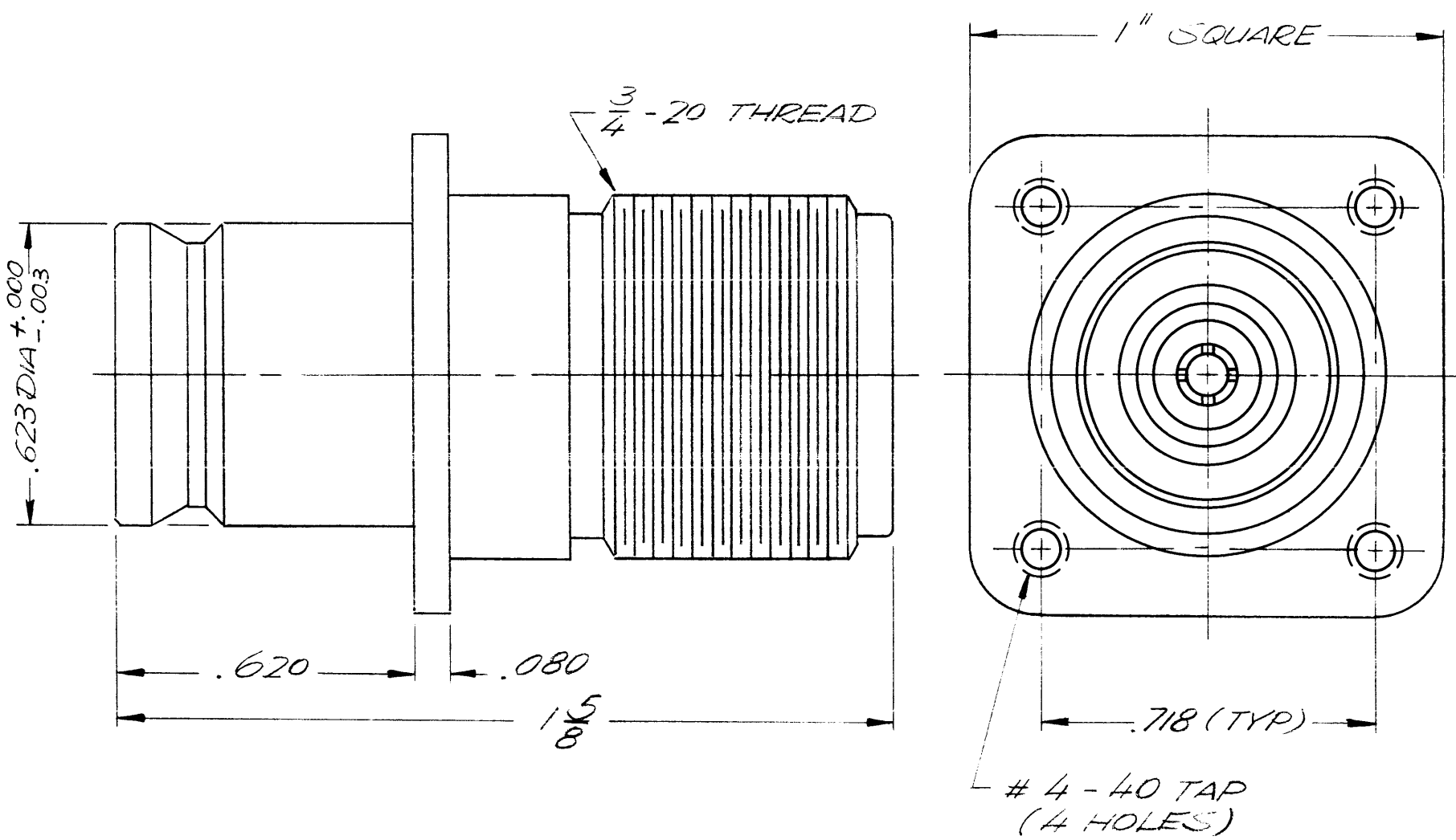
DECIMALS	FRACTIONS
.X ± .05	1/64
.XX ± .01	TOLS. ANGLES
.XXX ± .005	0° .30'

MATERIAL SEE NOTES

FINISH SEE NOTES

REQ'D	ITEM	PART NUMBER	DESCRIPTION	SYM.
	A. MARTINEZ		LIST OF MATERIAL	
FINAL APPROVAL		DATE	THE TECHNICAL MATERIEL CORP. MAMARONECK, NEW YORK	
MECH. DES.		DATE		
ELECT. DES.		DATE	CONNECTOR, RECEPTACLE - SWITCH TYPE	
CHECKED		DATE		
DRAWN		DATE	SIZE B CODE IDENT. NO. 82679 DWG NO. JJ348 ISSUE	
S401-70-3962		SCALE	SHEET OF	

REVISIONS							
ZONE	LTR	DESCRIPTION	DATE	E.M.N.NO	DRAFT	CHKD	APPD
	X	EXP. RELEASE	9/16/69		LH	JDe	
	Ø	ORIGINAL RELEASE	9/30/69		W		



SPECIFICATIONS

SERIES : QDS TO HN
 NO. OF CONTACTS : ONE (1)
 TYPE OF CONTACT : FEMALE
 DIELECTRIC : TEFLON

ELECTRICAL DATA

MAX. PEAK OPERAT. VOLTAGE : 1,500V
 FREQUENCY LIMIT : 10,000 MHZ
 IMPEDANCE : 50 OHMS

MATING ACCOMODATIONS

QDS (F) TO HN (F)

MATERIAL

EXTERNAL PARTS : BRASS
 CONTACT : BERYLLIUM COPPER

FINISH

EXTERNAL PARTS : SILVER PLATE
 AND RHODIUM FLASH
 CONTACT : SILVER PLATE
 AND GOLD FLASH.

REQ'D	ITEM	PART NUMBER	DESCRIPTION	SYM.
LIST OF MATERIAL				
FINAL APPROVAL		DATE	THE TECHNICAL MATERIEL CORP. MAMARONECK, NEW YORK	
MECH. DES.		DATE		
ELECT. DES.		DATE	CONNECTOR, ADAPTOR QDS (F) TO HN (F)	
CHECKED		DATE		
DRAWN		DATE	SIZE	ISSUE
			B	Ø
			CODE IDENT. NO.	DWG NO.
			82679	JT 349
			SCALE	SHEET OF

QDP8B1X11		
QTY / UNIT	MODEL USED ON	ASS'Y NO.
APPLICATION		
CODE	S401-70 (3963)	
NOTICE TO PERSONS RECEIVING THIS DRAWING THE TECHNICAL MATERIEL CORPORATION claims proprietary right in the material disclosed hereon. This drawing is issued in confidence for engineering information only and may not be reproduced or used to manufacture anything shown hereon without permission from THE TECHNICAL MATERIEL CORPORATION to the user. This drawing is loaned for mutual assistance and is subject to recall at any time.		

UNLESS OTHERWISE SPECIFIED DIMENSIONS ARE IN INCHES AND INCLUDE CHEMICALLY APPLIED OR PLATED FINISHES	
DECIMALS	FRACTIONS
.X ± .05	1/64
.XX ± .01	TOLS. ANGLES
.XXX ± .005	0° - 30'
MATERIAL	-H-
FINISH	-H-

5

4

3

2

1

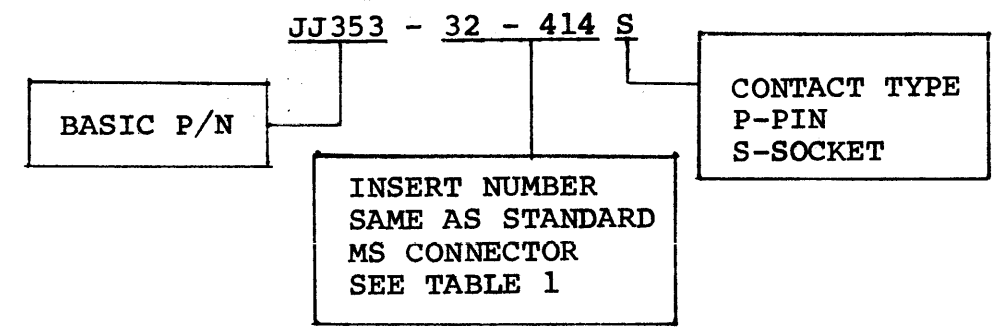
TABLE 1

INSERT AVAILABILITY (STANDARD MS TYPE)

REVISIONS							
E.M.N. NO.	DRAFT	CHKD	ZONE	LTR	DESCRIPTION	DATE	APPROVED
	DV			Ø	ORIGINAL RELEASE FOR PRODUCTION	10/26/73	

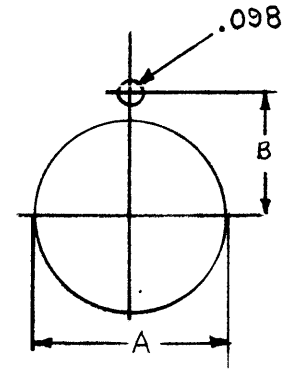
Insert Number	No. of Contacts	Insert Number	No. of Contacts
22-1	2	28-6	3
22-2	3	28-7	2
22-3	2	28-8	12
22-4	4	28-9	12
22-5	6	28-10	7
22-6	3	28-11	22
22-7	1	28-12	26
22-8	2	28-14	11
22-9	3	28-15	35
22-10	4	28-16	20
22-11	2	28-17	15
22-12	5	28-18	12
22-13	5	28-19	10
22-14	19	28-20	14
22-15	6	28-21	37
22-16	9	28-22	6
22-17	9	28-410	4
22-18	8	28-833	7
22-19	14	28-840	4
22-20	9	28-880	3
22-21	3	32-1	5
22-22	4	32-2	5
22-23	8	32-3	9
22-24	6	32-4	14
22-25	3	32-5	2
22-26	7	32-6	23
22-27	9	32-7	35
22-28	7	32-8	30
22-29	7	32-9	14
22-33	7	32-10	7
22-34	5	32-12	15
22-36	8	32-13	23
22-404	8	32-15	8
28-1	9	32-17	4
28-2	14	32-101	12
28-3	3	32-102	14
28-4	9	32-414	52
28-5	5		

TMC P/N TO BE IN THE FOLLOWING FORM



CONNECTOR SUPPLIED WITH CAP AND CHAIN

REF: PL288



FOR PANEL MOUNTING RECEPTACLE

MOUNTING DIMENSIONS - INCHES			
CONNECTOR SIZE	A	B	MAX CHASSIS THICKNESS
22	+0.010, -0.000	+0.002	5/16
28	1.385	.796	5/16
32	1.760	.984	5/16
	2.010	1.109	5/16

REQ'D	ITEM	PART NUMBER	DESCRIPTION	SYM.
LIST OF MATERIAL				
THE TECHNICAL MATERIEL CORP. MAMARONECK, NEW YORK				
CONNECTOR, RECP, WATERPROOF				
SIZE	CODE IDENT. NO.	DWG NO.	ISSUE	
B	82679	JJ353	Ø	
SCALE		SHEET	OF	

QTY / UNIT	MODEL USED ON	ASS'Y NO.
APPLICATION		
	CODE	S401-71 (89-2)
<p>NOTICE TO PERSONS RECEIVING THIS DRAWING THE TECHNICAL MATERIEL CORPORATION claims proprietary right in the material disclosed hereon. This drawing is issued in confidence for engineering information only and may not be reproduced or used to manufacture anything shown hereon without permission from THE TECHNICAL MATERIEL CORPORATION to the user. This drawing is loaned for mutual assistance and is subject to recall at any time.</p>		
FINISH ANODIZED		

UNLESS OTHERWISE SPECIFIED DIMENSIONS ARE IN INCHES AND INCLUDE CHEMICALLY APPLIED OR PLATED FINISHES

DECIMALS: .X ± .05, .XX ± .01, .XXX ± .005
 FRACTIONS: 1/64, ANGLES: 0°-30'

MECH. DES. [Signature]
 ELECT. DES. [Signature]
 CHECKED [Signature]
 DRAWN [Signature]

5

4

3

2

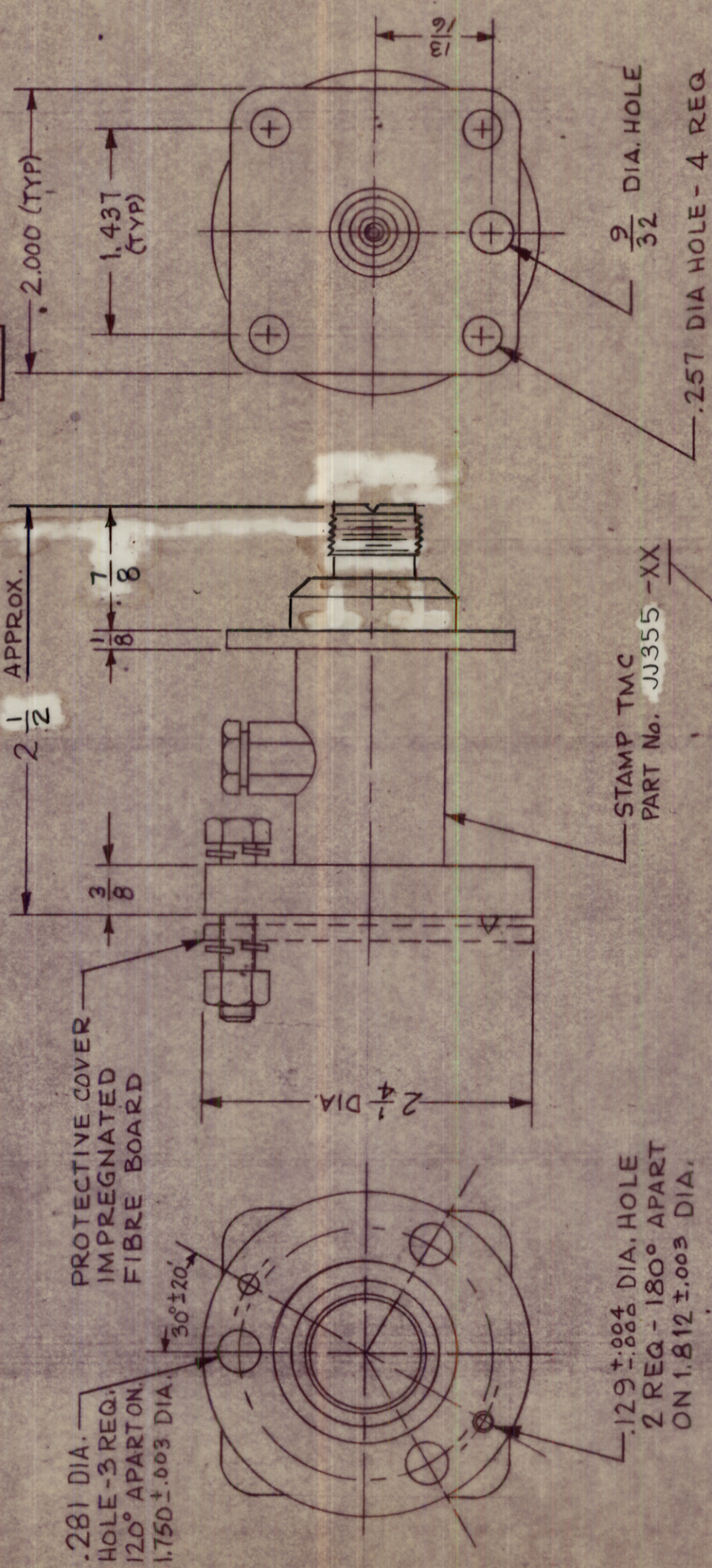
1

TMC PART No.	IMPEDANCE
JJ 355-50	50 - OHMS
JJ 355-70	70 - OHMS

REVISIONS

SYM	DESCRIPTION	DATE	E.M.N. NO.	DRAWN	CHKD	APPD
	ORIGINAL RELEASE	1-10-77		GDL		

JJ 355



SPECIFICATIONS:
 Series - UHF
 No. of Contacts - One (1)
 Type of Contact - Female
 Dielectric - Teflon

ELECTRICAL DATA:
 Max. Peak Opr. Volt - 5 KV
 Freq. Limit - 10,000 MCS
 Nominal Impedance - 50Ω or 70Ω

CABLE ACCOMMODATIONS:
 Type - 7/8 EIA

MATING ACCOMMODATIONS
 Type -

MATERIAL:
 External Parts - Brass
 Contact - Beryllium Copper

FINISH:
 External Parts - Silver Plate & Rhodium Flash
 Contact - Silver Plate & Gold Flash

PANEL:
 Max. Thickness - 3/16

- SUPPLIED BY MFR.
- O-RING - GA-158-1 - 1 REQ
 - SCREW, MACHINE - SCHH2520NR16 - 3 REQ
 - LOCK WASHER, SPLIT-LWS25HRN - 6 REQ
 - NUT, HEX - NTH2520NR14 - 3 REQ
 - CONNECTOR, INNER PD-287-XX - 1 REQ
- 50Ω OR 70Ω AS REQ.

NOTES

THE CONTENTS OF THIS DRAWING ARE THE EXCLUSIVE PROPERTY OF THE TECHNICAL MATERIEL CORP. ITS UNAUTHORIZED USE OR REPRODUCTION IN WHOLE OR IN PART IS STRICTLY FORBIDDEN.

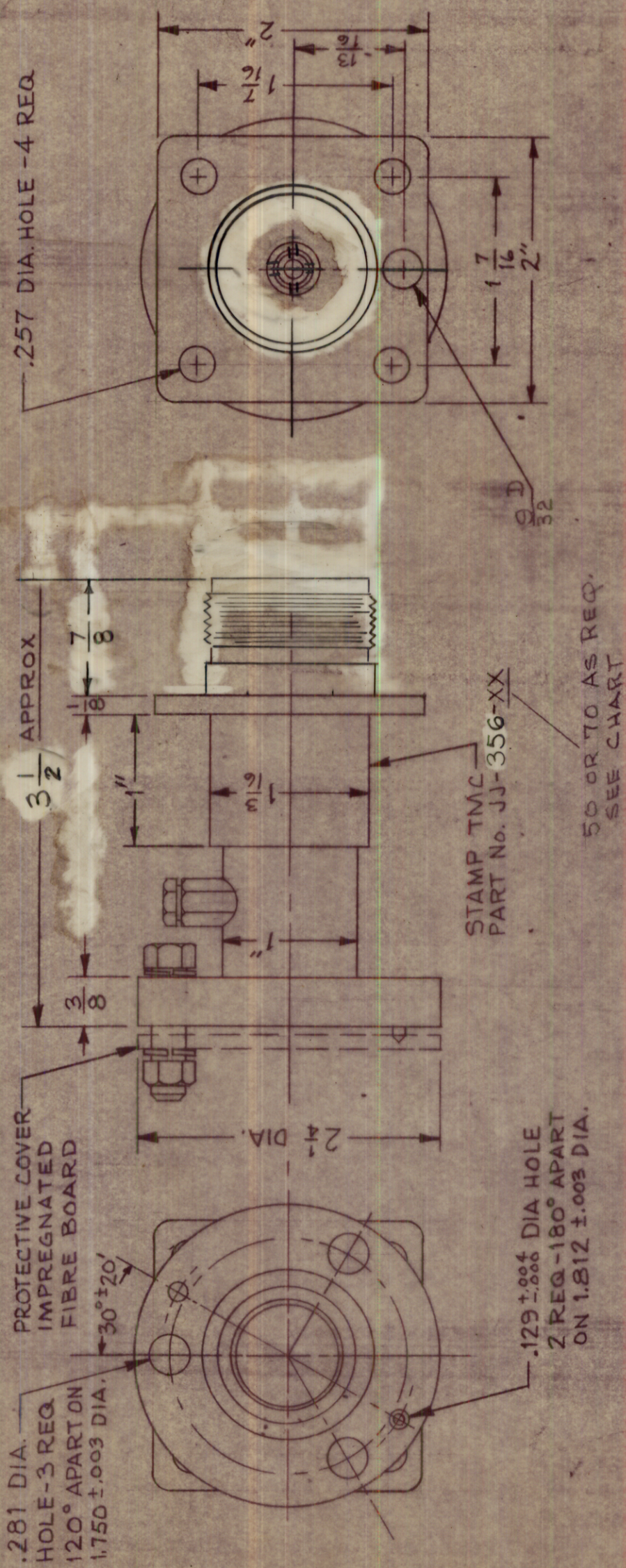
REQ'D.	ITEM	PART NUMBER	DESCRIPTION	SYMBOL
			LIST OF MATERIAL	
			THE TECHNICAL MATERIEL CORP. MAMARONECK, NEW YORK	
			TITLE ADAPTER, CONNECTOR	
			EIA FLANGE TO UHF 50 OHM OR 70 OHM	
			DATE	DATE
			CHECKED	DATE
			ELECT. DES.	DATE
			MECH. DES.	DATE
			SHEET	REV. LTR.

TMC PART No.	IMPEDANCE
JJ 356-50	50 OHMS
JJ 356-70	70 OHMS

SYMBOL	DESCRIPTION	REVISIONS
ORIGINAL	Release	

DATE	E.M.N. NO.	DRAFT	CHKD.	APPD.
1-10-64		GL		X

JJ 356



SPECIFICATIONS:
 Series - LC
 No. of Contacts - one (1)
 Type of Contact - Female
 Dielectric - Teflon

ELECTRICAL DATA:
 Max. Peak Opr. Volt - 10,000
 Freq. Limit - 1,000 MCS
 Nominal Impedance - 50Ω or 70Ω

CABLE ACCOMMODATIONS:
 Type - 7/8 EIA

MATING ACCOMMODATIONS:
 Type -

MATERIAL:
 External Parts - Brass
 Contact - Beryllium Copper

FINISH:
 External Parts - Silver Plate & Rhodium Flash
 Contact - Silver Plate & Gold Flash

PANEL:
 Max. Thickness - 3/16

- SUPPLIED BY MFR.**
- O - RING - GA-158-1 - 1 REQ.
 - SCREW, MACHINE - SCHH2520NR16 - 3 REQ.
 - LOCKWASHER, SPLIT-LWS25 HRN - 6 REQ.
 - NUT, HEX. - NTH2520NR14 - 3 REQ.
 - CONNECTOR, INNER-PO-287-XX - 1 REQ.
- 50Ω or 70Ω AS REQ.

NOTES

REQ'D.	ITEM	PART NUMBER	DESCRIPTION	SYMBOL
	MATERIAL		LIST OF MATERIAL	
	FINISH		THE TECHNICAL MATERIEL CORP. MAMARONECK, NEW YORK	
			ADAPTER, CONNECTOR	
			EIA FLANGE TO LC 50 OHM OR 70 OHM	

UNLESS OTHERWISE SPECIFIED DIMENSIONS ARE IN INCHES AND INCLUDE CHEMICALLY APPLIED OR PLATED FINISHES	DATE	DATE	DATE	DATE
DECIMALS .X ± .05 .XX ± .01 .XXX ± .005	DRAWN	CHECKED	ELECT. DES.	MECH. DES.
FRACTIONS ± 1/64 ANGLES ± 0° 30'	803			
ASSY. NO.				

JJ356