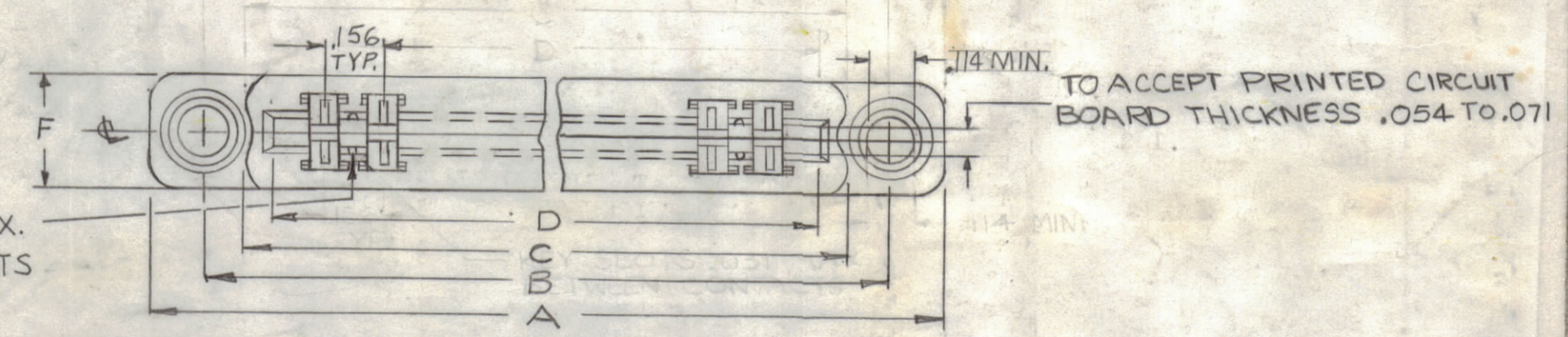
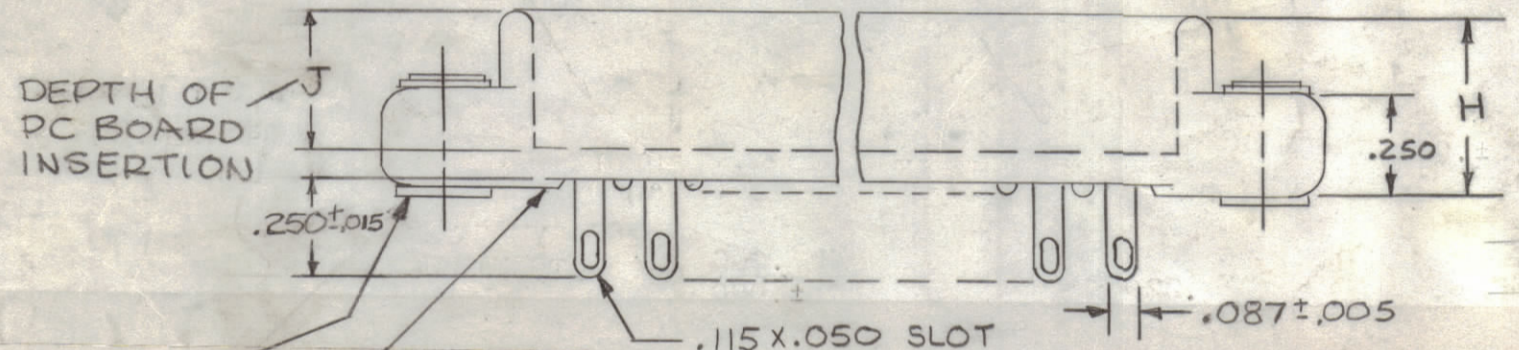


TMC PART NUMBER	NO OF CONTACTS		DIMENSIONS								MFG. CODE	REMARKS	DETAIL		
	SINGLE	DOUBLE	A	B	C	D	E	F	H	J					
JJ319-15S	15				REPLACED BY JJ319 A15 SFD										
JJ319-15D	15														
JJ319-10S	10		MAX.	±.008	±.032	±.007		.340		±.015	.340MAX. .290 MIN.	B CD		A	
JJ319-10D	20		2.625	2.156	1.864	1.724				.455					
JJ319A15S	15		3.406 MAX.	2.938 ±.008	2.640 ±.032	2.504 ±.007		.340		±.015 .455	.340MAX. .290 MIN.	B CD		A	
JJ319A15D	30														
JJ319-18S	18		3.875	3.406	3.114	2.972				±.015 .455	.340MAX. .290 MIN.	B CD		A	
JJ319-18D	36		MAX.	±.008	±.032	±.007		.340							
JJ319-22S	22		4.500	4.032	3.735	3.600				±.015 .455	.340MAX. .290 MIN.	B CD		A	
JJ319-22D	44		MAX.		±.032	±.007									
JJ319-6S	6		1.937 ±.015	1.531	1.239 ±.010	1.100		.340		.458	.333 ±.015	C		A	
JJ319-6D	12														
JJ319-28D	56		5.264	4.964	4.652	4.530		.437		.466	.291	B		A	

REVISIONS							
ZONE	SYM	DESCRIPTION	DATE	E.M.N. NO.	DRAFT	CHKD	APPD
	X	EXPERIMENTAL RELEASE	9-25-64		SRG		
	Ø	ORIGINAL RELEASE FOR PRODUCTION	10-1-64		SRG		
	A	COMPLETELY REVISED	5-21-65	A101	CJL		
	B	REVISED DETB WAS A & A WAS B JJ319A15S WAS JJ319-15S, JJ319A15D WAS JJ319-15D	9/6/65	14758	AVV		
F3	C	DETAILS, MFG. DELE. PLACES ADD TO A REF. PC. INSERT NOTE ADDED JJ319-15S IS REPL. BY JJ319A15S	11/16/65	15172	AVV		
	D	JJ319-6D & -6S ADDED TO CHART	10/29/66	17080	LHB		
	E	TERM "D" CHG'D TO "E"	8/25/67		C.C.	H.G.	
	F	ADDED JJ319-28D, P/N EXP. REV.	5/7/68	18909	H.B.		EFM



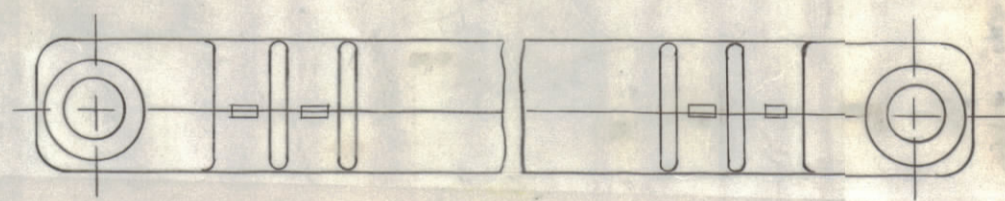
KEY SLOTS .031 MAX. BETWEEN CONTACTS



DETAIL "A"

FLOATING BUSHING SEE SPEC. 3

SHAPE OF BOTTOM OPTIONAL



- SPECIFICATIONS -

- CONTACTS:
 - (A) TYPE-FEMALE, FLAT, BIFURCATED.
 - (B) CURRENT RATING- 5 AMPERES CONTINUOUS
 - (C) VOLTAGE RATING- 1800 VOLTS RMS
 - (D) MATERIAL AND FINISH- PHOSPHOR BRONZE, OR BERYLLIUM GOLD PLATE.
 - (E) QUANTITY(PER CHART)
- DIELECTRIC:
 - GLASS FILLED DIALLYL PHTHALATE
 - COLOR GREEN
 - (MIL-M-19833,
- FLOAT BUSHING: STAINLESS STEEL, PASSIVATED (ALLOWS .020 MIN. LATERAL MOVEMENT IN ANY DIRECTION.
- THREADED BUSHING: STAINLESS STEEL, PASSIVATED, #04-40 NC2B
- SHEEL: NONE
- POLARIZATION: OPTIONAL KEYING BETWEEN CONTACTS
- LOCKING FEATURES: NONE
- APPLICABLE SPECS: MIL-C-21097
- TERMINALS: EYELET OR DIP SOLDER PER PART NUMBER
- KEYS: 1 KEY TO BE SUPPLIED AND PACKAGED WITH EACH CONNECTOR UNASSEMBLED.

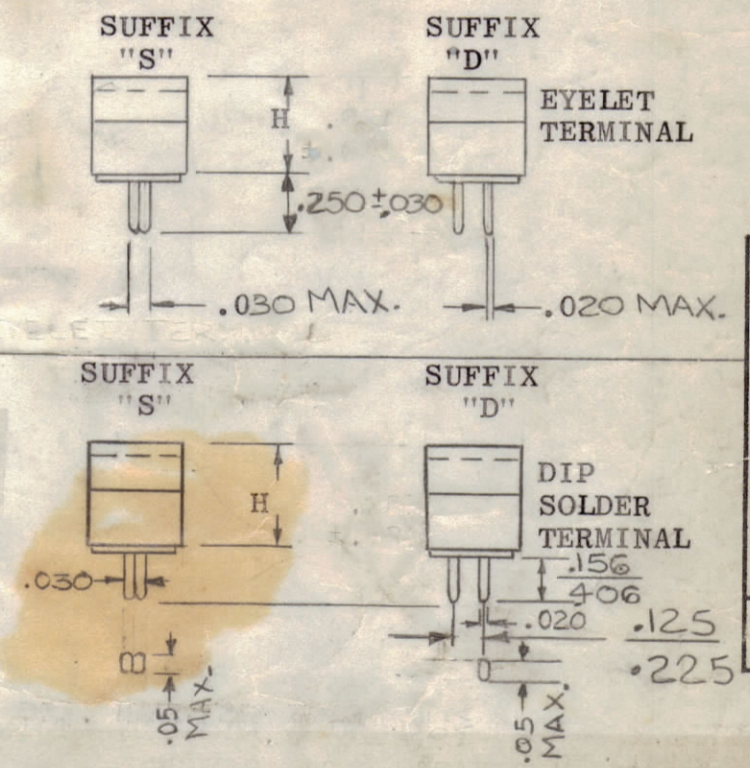
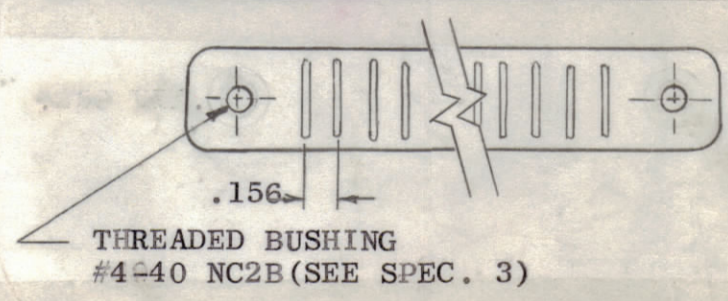
NOTE: DIP SOLDER TERM. TO BE USED WITH PLAIN MOUNTING HOLE OR THREADED BUSHING ONLY. THIS TYPE IS NON STANDARD AND SHOULD NOT BE USED UNLESS ABSOLUTELY NECESSARY.

NOTES

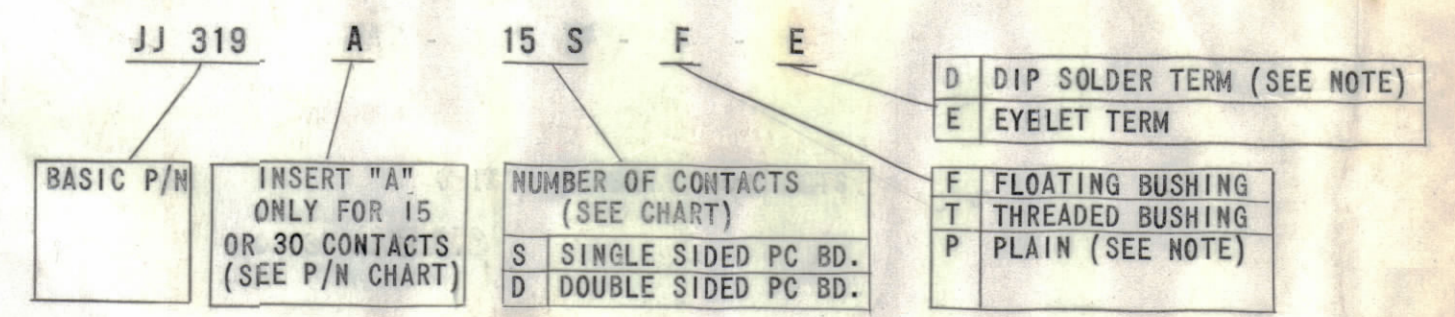
- B. S401-71
- C. S401-176
- D. S401-340

Q'TY./UNIT	MODEL USED ON	ASS'Y. NO.
SCALE	CODE	
	C	

THE CONTENTS OF THIS DRAWING ARE THE EXCLUSIVE PROPERTY OF THE TECHNICAL MATERIEL CORP. ITS UNAUTHORIZED USE OR REPRODUCTION IN WHOLE OR IN PART IS STRICTLY FORBIDDEN.



TMC P/N SHALL BE IN THE FOLLOWING FORM:



STANDARD DRAWING

REQ'D.	ITEM	PART NUMBER	DESCRIPTION	SYMBOL
	GELLMAN		LIST OF MATERIAL	
	MATERIAL	SEE SPEC ID	THE TECHNICAL MATERIEL CORP. MAMARONECK, NEW YORK	
	FINISH	SEE SPEC ID	CONNECTOR, RECEPTACLE, ELECT. (1/16 PRINTED CIR. BOARD)	
	UNLESS OTHERWISE SPECIFIED DIMENSIONS ARE IN INCHES AND INCLUDE CHEMICALLY APPLIED OR PLATED FINISHES			
DECIMALS	FRACTIONS			
.X ± .05	± 1/64			
.XX ± .01	ANGLES ± 0° 30'			
.XXX ± .005				
DRAWN	DATE	FINAL APPROVAL	DATE	
SRG	9-25-64	RJR		
CHECKED	DATE			
@llh	9-30-64			
ELECT. DES.	DATE			
		JJ 319		
MECH. DES.	DATE			
	9/30/64			
	SHEET			
				REV. LTR.