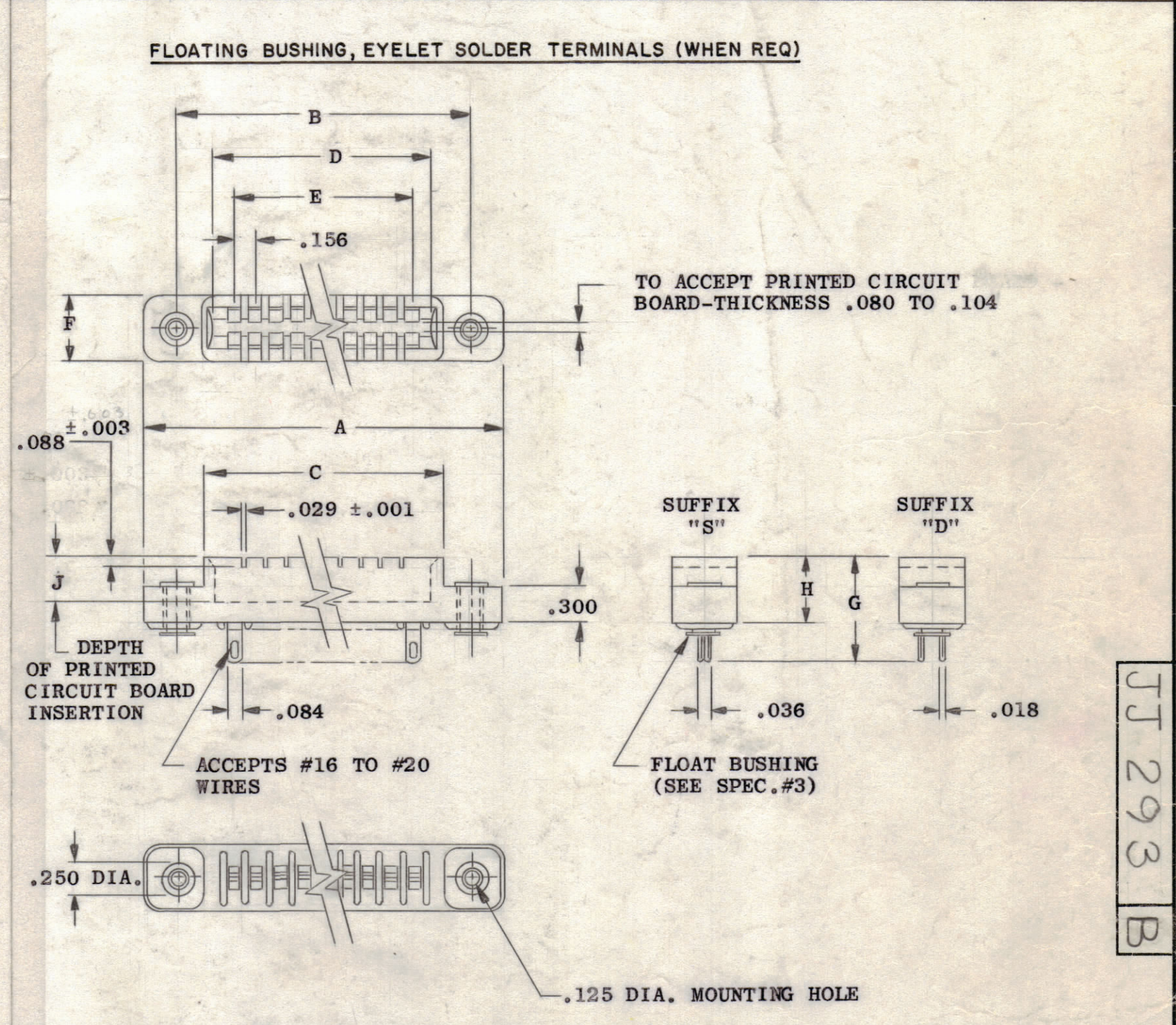
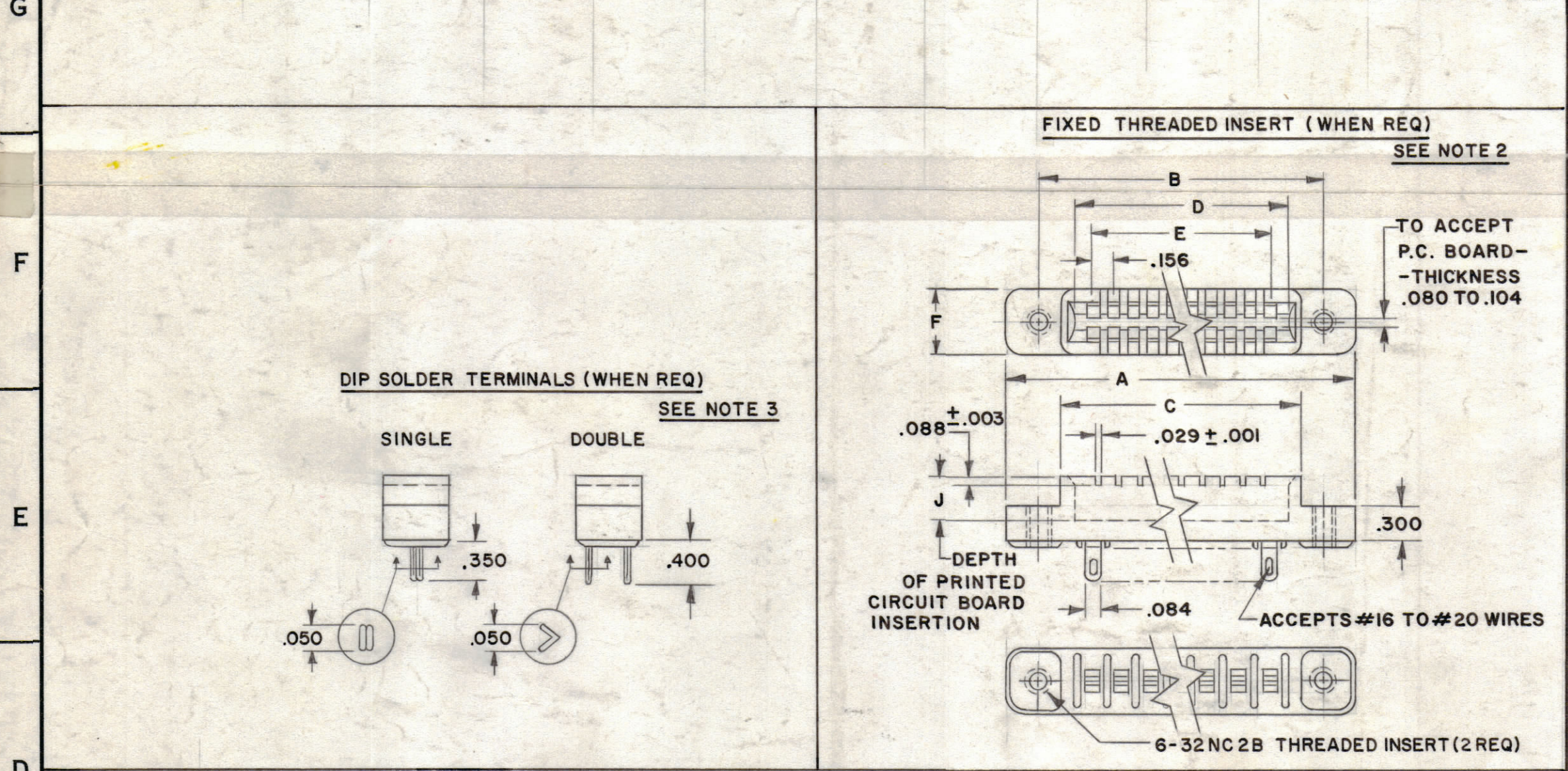


TMC PART NUMBER	NO. OF CONTACTS	DIMENSIONS								
		A	B	C	D	E	F	G	H	J
JJ 293-10D	20	2.78	±.007 2.281	1.85	±.007 1.713	±.007 1.405	0.500	0.75 0.80	0.500	0.35
JJ 293-15S	15	3.20	±.007 2.950	2.66	±.007 2.524	±.007 2.184	0.440	0.75 0.80	0.500	0.35
JJ 293-15D	30		±.007 3.540	3.11	±.007 2.970	±.007 2.652	0.500	0.75 0.80	0.500	0.35
JJ 293-18S	18	4.04	±.007 3.540	3.11	±.007 2.970	±.007 2.652	0.500	0.75 0.80	0.500	0.35
JJ 293-18D	36		±.007 3.540	3.11	±.007 2.970	±.007 2.652	0.500	0.75 0.80	0.500	0.35
JJ 293-22S	22	4.36	±.007 4.046	3.74	±.007 3.593	±.007 3.277	0.440	0.78 0.83	0.531	0.38
JJ 293-22D	44		±.007 4.046	3.74	±.007 3.593	±.007 3.277	0.440	0.78 0.83	0.531	0.38
JJ 293-25S	25	4.88	±.007 4.571	4.25	±.007 4.065	±.007 3.745	0.500	0.78 0.83	0.531	0.38
JJ 293-25D	50		±.007 4.571	4.25	±.007 4.065	±.007 3.745	0.500	0.78 0.83	0.531	0.38

ZONE		SYM	DESCRIPTION	DATE	E.M.N. NO.	DRAFT	CHKD	APPD
X1			COMPLETELY REDRAWN WITH CHANGES	10-4-63	1		G.S.	
X2			JJ-293-15D WAS JJ-293-20D	12-20-63				
O			ORIGINAL RELEASE FOR PRODUCTION	5-12-64	0	AM		
A			TMC/P/NO. JJ293-10S, 10 CONTACTS DELETED (CHART)	7-14-64	11745			
B			NOTES 1, 2, 3 & S401 CHART ADD., LETT "S" ADD TO P/N ON SPECS. #3. FIXED BUSHING NOTE ADD. FIXED THREADED INSERT & DIP SOLDER TERM. PICT. ADDED. FLOATING BUSHING TITLE ADD. TO PICT.	9-30-64	12481			



- SPECIFICATIONS-
- CONTACTS:
 - (A) TYPE - FEMALE, FLAT, SOLID FACE.
 - (B) CURRENT RATING - 5 AMP, CONTINUOUS
 - (C) VOLTAGE RATING - 1800 VOLTS R. M. S.
 - (D) MATERIAL AND FINISH - PHOSPHOR BRONZE, GOLD PLATE ON SILVER PLATE.
 - DIELECTRIC: GLASS FILLED DIALLYL PHTHALATE; COLOR, GREEN (MIL-M-19833, TYPE GDI-30)
 - FLOAT BUSHING: STAINLESS STEEL, PASSIVATED (ALLOWS .020 LATERAL MOVEMENT IN ANY DIRECTION). FIXED BUSHING: STAINLESS STEEL PASSIVATED 440NC 2B
 - SHELL: NONE
 - POLARIZATION: OPTIONAL - USE KY-104-1
 - LOCKING FEATURES: NONE
 - APPLICABLE SPECS: MIL-C-21097

S401 CHART	
S401 -220 TYPES	
DOUBLE SIDED 604-093,622-093	
SINGLE SIDED 605-093,623-093	

TMC PART NUMBER SHALL BE IN THE FOLLOWING FORM:

JJ 293-15 S-T D

BASIC TMC PART NUMBER	NUMBER OF CONTACTS	S FOR SINGLE SIDED P.C. BOARD	D FOR DOUBLE SIDED P.C. BOARD
-----------------------	--------------------	-------------------------------	-------------------------------

STANDARD DRAWING

- NOTES:
- PART NUMBER IN CHART IS FOR FLOATING BUSHING AND EYELET SOLDER TERMINALS.
 - WHEN THREADED INSERT IS REQUIRED ADD "T" TO PART NO. (SEE P/N DESCRIPTION), FOR FLOATING BUSHING ADD "F".
 - WHEN DIP SOLDER TERMINALS ARE REQUIRED ADD "D" TO PART NO. (SEE P/N DESCRIPTION), FOR EYELET ADD "E".

REQ'D	ITEM	PART NUMBER	DESCRIPTION	SYMBOL
LIST OF MATERIAL				
MATERIAL			THE TECHNICAL MATERIEL CORP.	
SEE SPEC. #1D			MAMARONECK, NEW YORK	
FINISH			TITLE	
SEE SPEC. #1D			CONNECTOR, RECEPTACLE, ELECTRICAL (3/32 PRINTED CIR. BOARD)	
UNLESS OTHERWISE SPECIFIED DIMENSIONS ARE IN INCHES AND INCLUDE CHEMICALLY APPLIED OR PLATED FINISHES			DRAWN	DATE
DECIMALS: .X ± .05, .XX ± .01, .XXX ± .005			J. LESHINSKI	3/16/63
FRACTIONS: 1/64, ANGLES: ± 0° 30'			CHECKED	DATE
				5-7-64
TOLERANCES			ELECT. DES.	DATE
				5-7-64
			MECH. DES.	DATE
				5-7-64