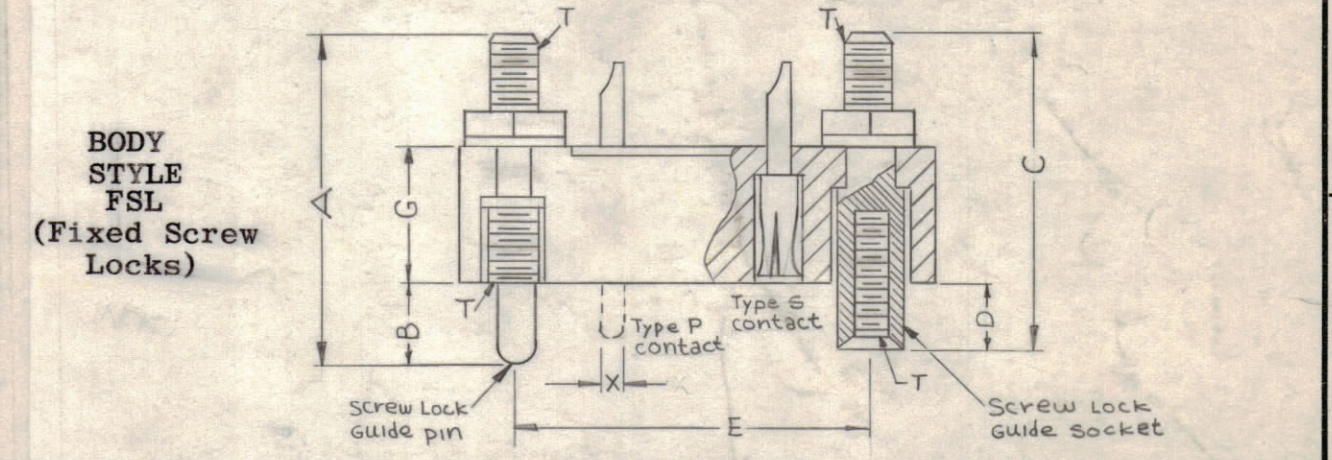
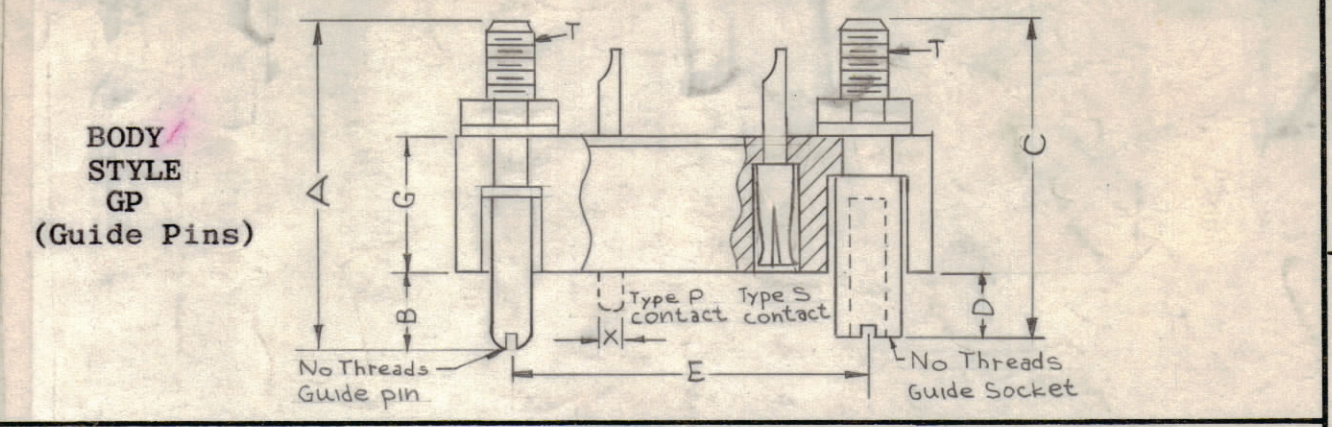


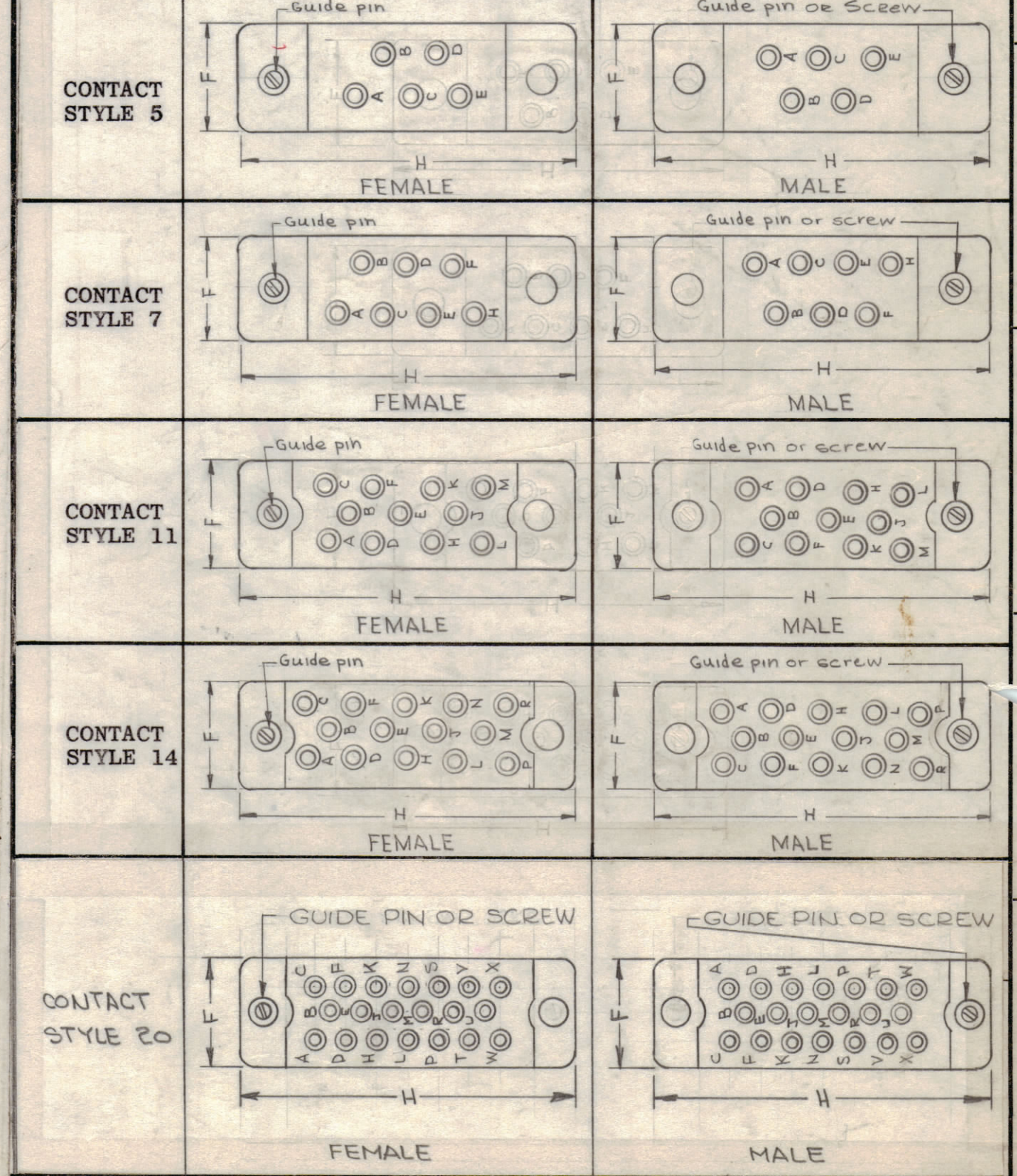
TMC PART NUMBER	MFG		TYPE AND BODY STYLE	CONTACT STYLE	NO. OF CONTACTS	SOLDER CUP ACCOMMODATES	DIMENSIONS										MATES WITH	FIRST USED ON
	NUMBER	CODE					A	B	C MAX.	D REF.	E	F	G	H	T	X (Pin Dia If Male)		
JJ 242-1 *	SM5 *-20	A	Sub-Min. with Guide Pins (GP)	5	5	No. 20 AWG	.530	.130	.510	.11	.500	.230	.220	.750	2-56	.040	PL-225-1	HFS-1
JJ 242-2 *	SM7 *-20	A	Sub-Min. with Guide Pins (GP)	7	7	No. 20 AWG	.530	.130	.510	.11	.625	.230	.220	.875	2-56	.040	PL-225-2	
JJ 242-3 *	SM11*-20	A	Sub-Min. with Guide Pins (GP)	11	11	No. 20 AWG	.530	.120	.510	.11	.625	.340	.220	.875	2-56	.040	PL-225-3	HFS-1
JJ 242-4 *	MA14*-16-FSL	A	Min. with Screw Locks (FSL)	14	14	No. 16 AWG	.810	.220	.750	.150	.937	.440	.360	1.250	6-32	.062	PL-225-4	TER-25K-A-50
JJ242-5 *	5040-14SS	B	SUB-MIN WITH SCREW LOCK (FSL)	14	14	NO. 20 AWG	.530	.130	.520	.110	.750	.340	.220	2-56	.040	PL225-5 PL225-8	HFR-2	
JJ242-6 *	5040-20SS	B	SUB-MIN WITH SCREW LOCK (FSL)	20	20	NO. 20 AWG	.530	.130	.520	.110	1.00	.340	.220	2-56	.040	PL225-6	HFR-2	
JJ242-7 *	SM5*-20 FSL	A	SUB-MIN WITH SCREW LOCK (FSL)	5	5	NO. 20 AWG	.530	.130	.510	.110	.500	.230	.220	2-56	.040	PL225-7		

STANDARD DRAWING

JJ 242 K



ALL CONTACT STYLES SHOWN BELOW ARE VIEWED FROM ENGAGING END



MATERIALS AND FINISHES:
 CONTACTS: MALE - Brass, Gold Over Silver
 FEMALE - Spring Temper Phosphor Bronze, Gold Over Silver Plated
 MOLDING COMPOUND - Glass Filled Diallyl Phthalate
 Type GDI-30 (Per MIL-M-19833)
 GUIDE PINS AND SOCKETS - Stainless Steel, Passivated
 SCREW LOCKS - Stainless Steel, Passivated

MECHANICAL SPECIFICATIONS:
 CONTACT SPACING:
 Sub-Miniature Type - .125 In. C to C
 Miniature Type - .150 In. C to C

ELECTRICAL SPECIFICATIONS:
 VOLTAGE BREAKDOWN:
 At Sea Level - Sub-Miniature Type: 1900 VRMS
 Miniature Type: 2100 VRMS
 At 60,000 Feet - Sub-Miniature Type: 700 VRMS
 Miniature Type: 750 VRMS

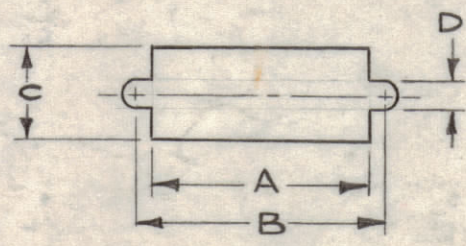
NOTE: ALL DIMENSIONS USED FOR REFERENCE ONLY.

RECOMMENDED CUT OUT FOR SUB. MIN. TYPE

PINS	A	B	C	D
5	.420	.500	.230	.093
7	.530	.630	.230	.093
11	.530	.630	.340	.093
14	.670	.750	.340	.093
20	.940	1.00	.340	.093

RECOMMENDED CUT OUT FOR MIN. TYPE

PINS	A	B	C	D
14	.810	.936	.440	.140



TMC PART NO. SHALL BE AS SHOWN IN THE FOLLOWING FORM:

JJ 242-1 *

BASIC TMC PART NO. DENOTES TYPE OF CONTACTS
 P = PIN (MALE)
 S = SOCKET (FEMALE)

MFG CODE
 A = 5401-136
 B = 5401-220

REV	DATE	DESCRIPTION	BY	CHKD	APP'D
K	8-9-66	ADDED 20; 940; 1.00; .340; .093	RME	QCB	MM
J	6-6-66	ON TMC P/N CHART ON C & D DIM. (MAX) & REEF ADDED	GDL	QCB	RC
H	5-2-66	P/N CHART UPDATED	WLD	QCB	
G	12-22-64	JJ242-7 * ADDED TO CHART	ASB		
F	11-19-64	RECOMMENDED CUT OUT & CHARTS ADD.	AB		RC
E	7-15-64	JJ242-5 & 6 ADDED; MFG CODE & STYLE 20 ADDED			
D	7-9-63	PURCHASING INFO CHART DELETED, CONTACT SPECS REVISED			
C	7-31-62	DWG REVISED	SG		
B	4-3-62	COMPLETELY REDRAWN & REVISED	EB		

UNLESS OTHERWISE SPECIFIED:
 DIMENSIONS ARE IN INCHES
 TOLERANCES ON FRACTIONS ± 1/64 DECIMALS ± .005 ANGLES ± 1/2°
 MAXIMUM ALLOWABLE TOLERANCES HAVE BEEN DETERMINED AND ANY DEVIATIONS WILL BE CAUSE FOR REJECTION. REMOVE ALL BURRS & SHARP EDGES

REQ. PER UNIT	MODEL	SECTION	ASS'Y. NO.	DATE
				4-3-62

REQ. ITEM	PART NO.	DESCRIPTION	SYMBOL
		THE TECHNICAL MATERIEL CORP. MAMARONECK, NEW YORK	
		CONNECTOR, RECEPTACLE, MINIATURE #	
		SUB-MINIATURE	
		DRAWN	RUZZO
		CHECKED	
		FINAL APPROVAL	
		TYPE & TEMPER	HEAT TREAT. SPEC.
		FINISH & SPEC. NO.	ELEC. DES. APP. MECH. DES. APP. SHEET OF
			JJ 242 K