

IF IT IS FOUND DESIRABLE TO CHANGE ANY TOLERANCE OR OTHER DETAIL SPECIFIED ON THIS DRAWING NOTIFY THE PURCHASER PROMPTLY.

STANDARD DRAWING

JJ-10002

MAXIMUM ALLOWABLE TOLERANCES HAVE BEEN DETERMINED AND DEVIATIONS WILL BE CAUSE FOR REJECTION. REMOVE ALL BURRS AND SHARP EDGES

USED ON

MODEL

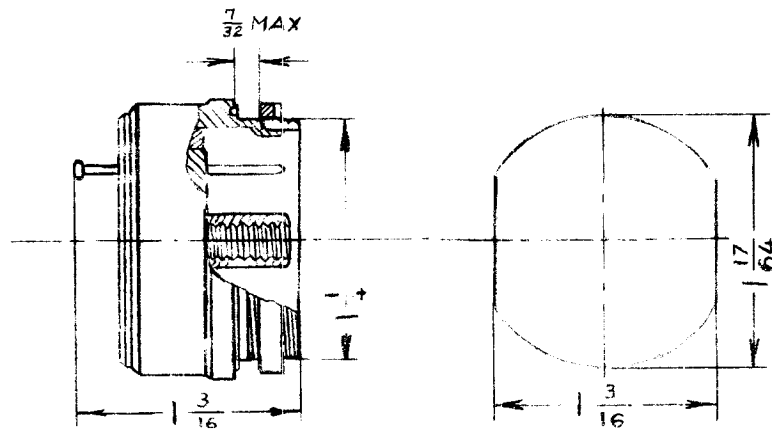
PROJECT NO.

ASS'Y. NO.

DATE

FEB 22/60

TMC PART NO.	MFR NO.	SHELL SIZE	NO. OF CONTACTS	CURRENT RATING	VOLTAGE RATING	TYPE
JJ-10002-1	164-101-2P	SMALL NO.20	2 NO.12	35 AMP	1000V RMS	MALE
JJ-10002-2	164-101-2S	SMALL NO.20	2 NO.12	35 AMP	1000V RMS	FEMALE



TMC PART NO.	MATING PLUG
JJ-10002-1	PL-10002-2
JJ-10002-2	PL-10002-1

AMPHENOL

REQ.	ITEM	PART NO.	DESCRIPTION	SYMBOL
			TMC (Canada) LIMITED OTTAWA ONTARIO	
		STOCK SIZE	CONNECTOR, RECEPTACLE,	
		MATERIAL	WATERPROOF, POWER	
		WEIGHT PER PC.	MK	
		TYPE & TEMPER	DRAWN	ELEC. DES. APP. MECH. DES. APP.
		HEAT TREAT. SPEC.	JPC. LF	FINAL APPROVAL.
		FINISH & SPEC. NO.	CHECKED	JJ-10002

ISSUE	ITEM	CHANGED FROM	DATE	CN. NO.	DRAFTS	CHECKER	ENG. APP.
TOLERANCES		SCALE 1:1					
ALL OTHERS:		DIMENSIONS IN INCHES UNLESS OTHERWISE SPECIFIED					
DEC. DIM. ±		DRILL, PUNCH, COMMERCIAL STOCK SIZES AND MANUFACTURERS TOLERANCES ARE NOT INCLUDED.					
FRAC. DIM. ±							
ANGULAR DIM. ±							

IF IT IS FOUND DESIRABLE TO CHANGE ANY TOLERANCE OR OTHER DETAIL SPECIFIED ON THIS DRAWING NOTIFY THE PURCHASER PROMPTLY.

AMPHENOL DRAWING

JJ-10003

MAXIMUM ALLOWABLE TOLERANCES HAVE BEEN DETERMINED AND DEVIATIONS WILL BE CAUSE FOR REJECTION REMOVE ALL BURRS AND SHARP EDGES

USED ON

MODEL

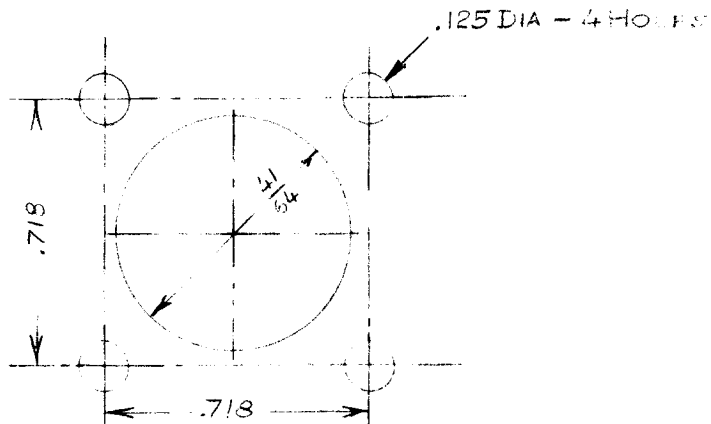
PROJECT NO.

ASS'Y. NO.

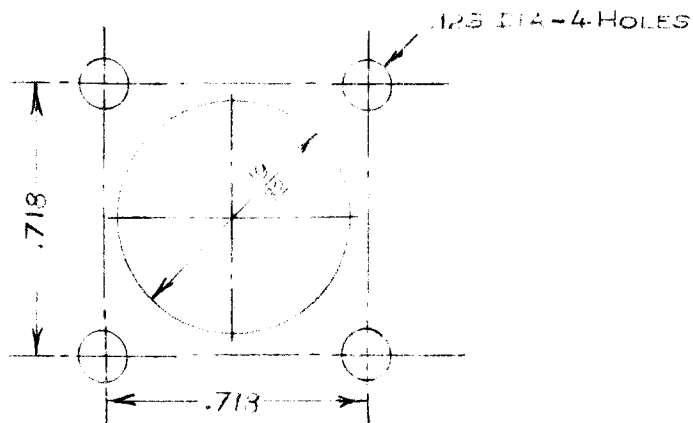
DATE

FEB 18/60

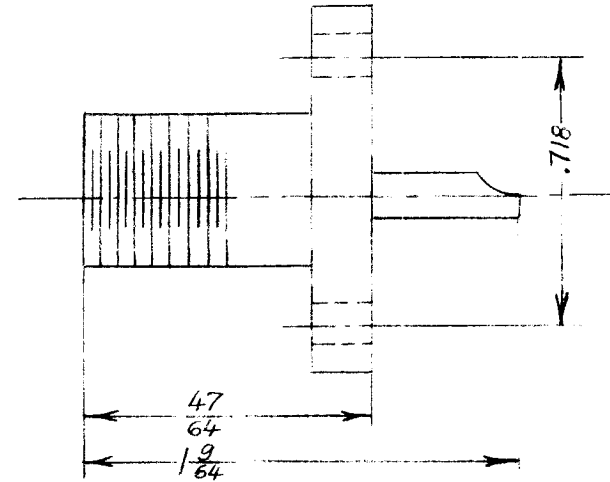
MOUNTING HOLES



BEHIND PANEL MOUNT



FRONT PANEL MOUNT
(FOR RECEPTACLE ONLY)



REF: AMPHENOL 82-112

REQ.	ITEM	PART NO.	DESCRIPTION	SYMBOL
			TMC (Canada) LIMITED OTTAWA ONTARIO	
		STOCK SIZE	CONNECTOR, RECEPTACLE	
		MATERIAL	COAXIAL	
		WEIGHT PER PC.		
		TYPE & TEMPER	M.K.	
		HEAT TREAT. SPEC.	DRAWN	ELEC. DES. APP. MECH. DES. APP.
		FINISH & SPEC. NO.	CHECKED	FINAL APPROVAL
				JJ-10003

ISSUE	ITEM	CHANGED FROM	DATE	CN. NO.	DRAFTS	CHECKER	ENG. APP.

TOLERANCES		SCALE
ALL OTHERS	DEC. DIM. ± FRAC. DIM. ± ANGULAR DIM. ±	2:1 DIMENSIONS IN INCHES UNLESS OTHERWISE SPECIFIED DRILL, PUNCH, COMMERCIAL STOCK SIZES AND MANUFACTURERS TOLERANCES ARE NOT INCLUDED.

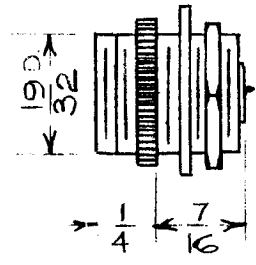
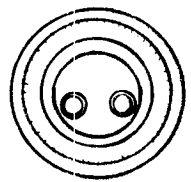
JJ-10004

ISSUE	ITEM	CHANGED FROM	DATE	CN. NO.	DRAFTS	CHECKER	ENG. APP.	REQ.	ITEM	PART NO.	DESCRIPTION	SYMBOL
-------	------	--------------	------	---------	--------	---------	-----------	------	------	----------	-------------	--------

STANDARD DRAWING

NOT TO BE TO PERSONS RECEIVING THIS DRAWING

THE TECHNICAL MATERIALS ENGINEERING DEPARTMENT HAS
 REVIEWED THIS DRAWING AND IT IS HEREBY APPROVED FOR
 FABRICATION. THIS DRAWING IS THE PROPERTY OF THE
 COMPANY AND IS NOT TO BE REPRODUCED OR COPIED
 WITHOUT THE WRITTEN PERMISSION OF THE
 COMPANY.



THE TECHNICAL MATERIALS ENGINEERING DEPARTMENT
 MANAGER, NEW YORK

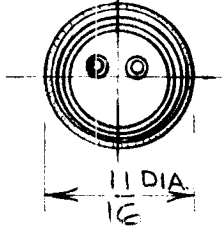
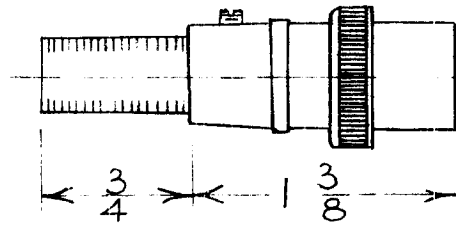
MFRS. PT. NO. : 80-PC2F

MODEL		PROJECT NO.		ASS'Y. NO.		DATE APRIL 9-62		STOCK SIZE		TMC (Canada) LIMITED OTTAWA ONTARIO			
USED ON								MATERIAL		WEIGHT PER PC.		CONNECTOR, FEMALE, 2 PRONG	
MAXIMUM ALLOWABLE TOLERANCES HAVE BEEN DETERMINED AND DEVIATIONS WILL BE CAUSE FOR REJECTION. REMOVE ALL BURRS AND SHARP EDGES				IF IT IS FOUND DESIRABLE TO CHANGE ANY TOLERANCE OR OTHER DETAIL SPECIFIED ON THIS DRAWING NOTIFY THE PURCHASER PROMPTLY.				TYPE & TEMPER		DRAWN JPC		ELEC. DES. APP.	MECH. DES. APP.
TOLERANCES				SCALE S 401-71				HEAT TREAT. SPEC.		CHECKED JPC		FINAL APPROVAL	
ALL OTHERS:		DEC. DIM. ±		DIMENSIONS IN INCHES UNLESS OTHERWISE SPECIFIED		FINISH & SPEC. NO.						JJ10004	
		FRAC. DIM. ±		DRILL, PUNCH, COMMERCIAL STOCK SIZES AND MANUFACTURERS TOLERANCES ARE NOT INCLUDED.									
		ANGULAR DIM. ±											

JJ-10005

ISSUE	ITEM	CHANGED FROM	DATE	CN. NO.	DRAFTS	CHECKER	ENG. APP.	REQ.	ITEM	PART NO.	DESCRIPTION	SYMBOL
-------	------	--------------	------	---------	--------	---------	-----------	------	------	----------	-------------	--------

STANDARD DRAWING



NOTICE TO PERSONS RECEIVING THIS DRAWING

THE TECHNICAL MATERIAL CORPORATION claims copyright in this drawing and in the design of the connector shown hereon. It is the policy of this corporation to sell drawings and designs on a non-exclusive basis. The purchaser of such drawings and designs is authorized to use the same for his own purposes, but he is not to reproduce or distribute them to others without the written consent of the Technical Material Corporation.

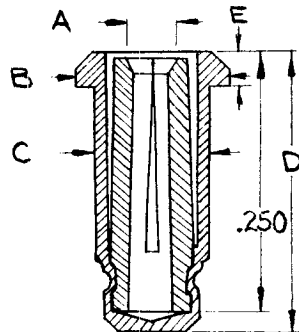
THE TECHNICAL MATERIAL CORPORATION
MAMARONCK, NEW YORK

MFRS. PT. NO.: 80MC2M

MODEL		PROJECT NO.		ASS'Y. NO.		DATE APRIL 9 1962		STOCK SIZE		TMC (Canada) LIMITED OTTAWA ONTARIO	
USED ON								MATERIAL		WEIGHT PER PC.	
MAXIMUM ALLOWABLE TOLERANCES HAVE BEEN DETERMINED AND DEVIATIONS WILL BE CAUSE FOR REJECTION. REMOVE ALL BURRS AND SHARP EDGES				IF IT IS FOUND DESIRABLE TO CHANGE ANY TOLERANCE OR OTHER DETAIL SPECIFIED ON THIS DRAWING NOTIFY THE PURCHASER PROMPTLY.				TYPE & TEMPER		JPC	
TOLERANCES				SCALE: S 401-71				HEAT TREAT. SPEC.		DRAWN J.C.	
ALL OTHERS		DEC. DIM. ±		DIMENSIONS IN INCHES UNLESS OTHERWISE SPECIFIED		FINISH & SPEC. NO.		CHECKED		ELEC. DES. APP. MECH. DES. APP.	
		FRAC. DIM. ±		DRILL, PUNCH, COMMERCIAL STOCK SIZES AND MANUFACTURERS TOLERANCES ARE NOT INCLUDED.				FINAL APPROVAL			
		ANGULAR DIM. ±								JJ10005	

ISSUE	ITEM	CHANGED FROM	DATE	CN. NO.	DRAFTS	CHECKER	ENG. APP.	REQ.	ITEM	PART NO.	DESCRIPTION	SYMBOL
-------	------	--------------	------	---------	--------	---------	-----------	------	------	----------	-------------	--------

Ø		REL. TO PROD.	JAN 4/66		GM		(RP)					
---	--	---------------	----------	--	----	--	------	--	--	--	--	--

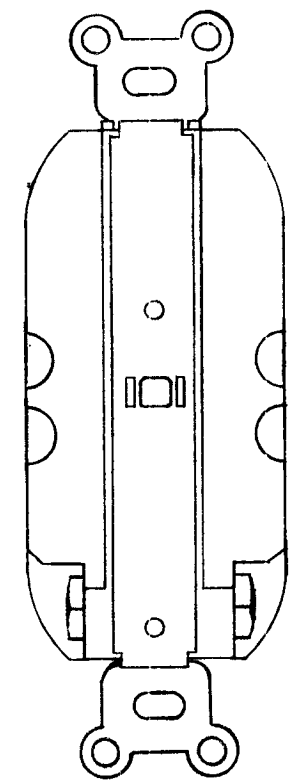
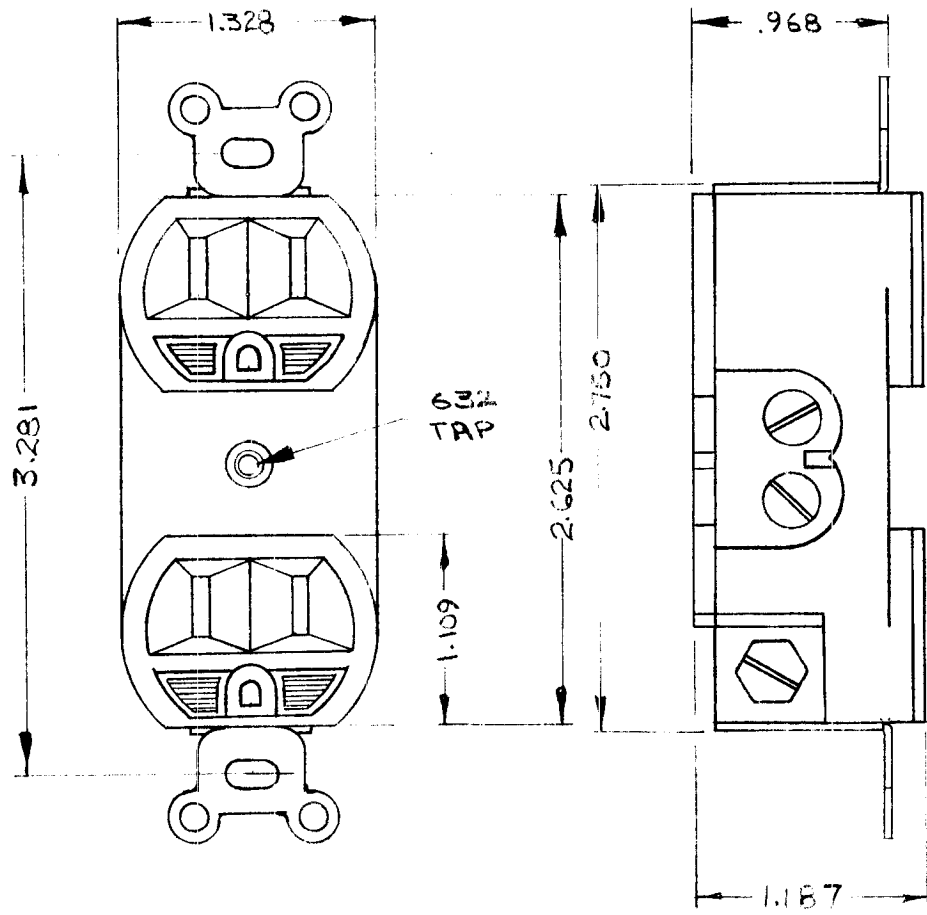


T.M.C. PART NO.	NUGENT PART NO.	A	B	C	D	E
JJ 10006-1	NS 431 B1	.040	.156	.117	.286	.032

SUPPLIER: 910045-53

MODEL		PROJECT NO.		ASS'Y. NO.		DATE		STOCK SIZE		TMC (Canada) LIMITED OTTAWA ONTARIO					
		005/66				JAN 4/66									
USED ON						MATERIAL		WEIGHT PER PC.		RECEPTACLE, PIN					
MAXIMUM ALLOWABLE TOLERANCES HAVE BEEN DETERMINED AND DEVIATIONS WILL BE CAUSE FOR REJECTION. REMOVE ALL BURRS AND SHARP EDGES						IF IT IS FOUND DESIRABLE TO CHANGE ANY TOLERANCE OR OTHER DETAIL SPECIFIED ON THIS DRAWING NOTIFY THE PURCHASER PROMPTLY.						TYPE & TEMPER		RL	(4)
												DRAWN		ELEC. DES. APP.	
TOLERANCES						SCALE						CHECKED		FINAL APPROVAL	
ALL OTHERS: DEC. DIM. ± FRAC. DIM. ± ANGULAR DIM. ±						DIMENSIONS IN INCHES UNLESS OTHERWISE SPECIFIED						HEAT TREAT. SPEC.		JUTASI JJ 10006 Ø	
						DRILL, PUNCH, COMMERCIAL STOCK SIZES AND MANUFACTURERS TOLERANCES ARE NOT INCLUDED.						FINISH & SPEC. NO.			

ISSUE	ITEM	CHANGED FROM	DATE	CN. NO.	DRAFTS	CHECKER	ENG. APP.	REQ.	ITEM	PART NO.	DESCRIPTION	SYMBOL
0		RELEASED	7-3-66				<i>(Signature)</i>					



REF. MFG. S-401-43
PART NO. (52.62)

APP10001	052/66		MARCH 4/66			TMC (Canada) LIMITED OTTAWA ONTARIO	
MODEL	PROJECT NO.	ASSY. NO.	DATE	STOCK SIZE			
USED ON				MATERIAL	WEIGHT PER PC.	RECEPTACLE, DUPLEX	
MAXIMUM ALLOWABLE TOLERANCES HAVE BEEN DETERMINED AND DEVIATIONS WILL BE CAUSE FOR RE. ECTION. REMOVE ALL BURRS AND SHARP EDGES		IF IT IS FOUND DESIRABLE TO CHANGE ANY TOLERANCE OR OTHER DETAIL SPECIFIED ON THIS DRAWING NOTIFY THE PURCHASER PROMPTLY.		TYPE & TEMPER		RPL	<i>(Signature)</i>
TOLERANCES		SCALE NTS		HEAT TREAT. SPEC.		DRAWN	ELEC. DES. APP.
ALL OTHERS	DEC. DIM. ±	DIMENSIONS IN INCHES UNLESS OTHERWISE SPECIFIED		FINISH & SPEC. NO.		CHECKED	FINAL APPROVAL
	FRAC. DIM. ±	DRILL, PUNCH, COMMERCIAL STOCK SIZES AND MANUFACTURERS TOLERANCES ARE NOT INCLUDED.					
	ANGULAR DIM. ±						
						JJ 10007	Ø

ISSUE	ITEM	CHANGED FROM	DATE	CN. NO.	DRAFTS	CHECKER	ENG. APP.	REQ.	ITEM	PART NO.	DESCRIPTION	SYMBOL
Ø		REL. TO PROD	16-5-66		RD		(P)					

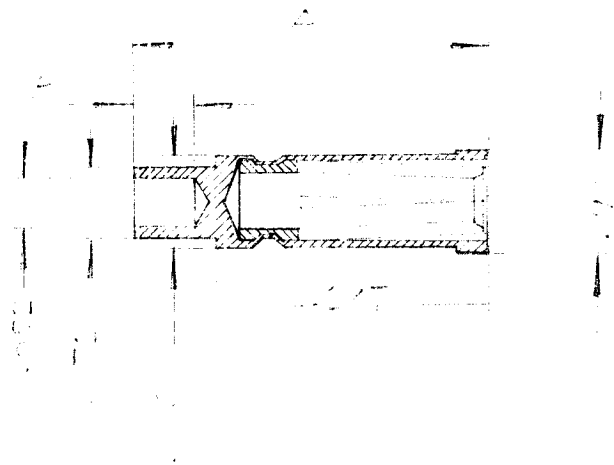
MFG. PART NO. 225-21511-101
 DRILL MTG. HOLES (2 PER)
 TO 11/64 DIA.

REF: S401-71

VLRE-1	035/66	A 4323-4	MAY 13/66			TMC (Canada) LIMITED OTTAWA ONTARIO	
MODEL	PROJECT NO.	ASS'Y. NO.	DATE	STOCK SIZE		CONNECTOR, RECEPTACLE	
USED ON				MATERIAL	WEIGHT PER PC.	ELECTRICAL	
MAXIMUM ALLOWABLE TOLERANCES HAVE BEEN DETERMINED AND DEVIATIONS WILL BE CAUSE FOR REJECTION. REMOVE ALL BURRS AND SHARP EDGES		IF IT IS FOUND DESIRABLE TO CHANGE ANY TOLERANCE OR OTHER DETAIL SPECIFIED ON THIS DRAWING NOTIFY THE PURCHASER PROMPTLY.		TYPE & TEMPER		GAM	
TOLERANCES		SCALE		HEAT TREAT. SPEC.		DRAWN	ELEC. DES. APP.
ALL OTHERS	DEC. DIM. ± FRAC. DIM. ± ANGULAR DIM. ±	DIMENSIONS IN INCHES UNLESS OTHERWISE SPECIFIED		FINISH & SPEC. NO.		CHECKED	MECH. DES. APP.
		DRILL, PUNCH, COMMERCIAL STOCK SIZES AND MANUFACTURERS TOLERANCES ARE NOT INCLUDED.				JOHNSTON	FINAL APPROVAL
						JJ10008	Ø

ISSUE	ITEM	CHANGED FROM	DATE	CH. NO.	DRAFTS	CHECKER	ENG. APP.	REQ.	ITEM	PART NO.	DESCRIPTION	SYMBOL
Ø		REL TO FROL	31 MAR '71									

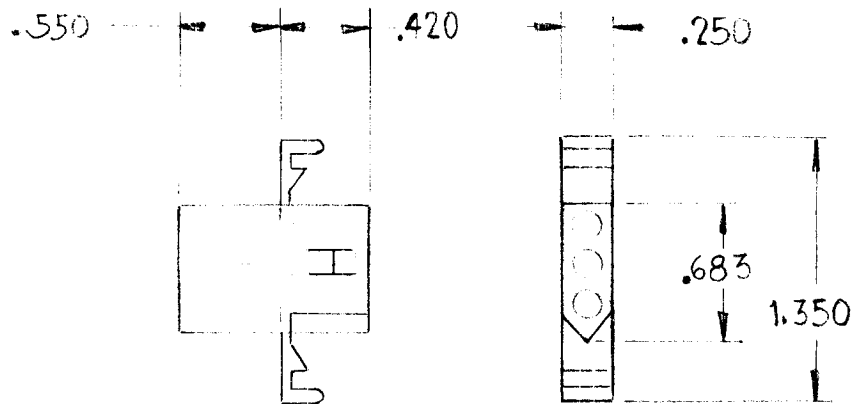
TM	ILLUM	TYPE	LEN	WID	HT
RECEPTACLE	RECEPTACLE	RECEPTACLE	RECEPTACLE	RECEPTACLE	RECEPTACLE
RECEPTACLE	RECEPTACLE	RECEPTACLE	RECEPTACLE	RECEPTACLE	RECEPTACLE



MODEL		PROJECT NO.		ASS'Y. NO.		DATE		STOCK SIZE		TMC (Canada) LIMITED OTTAWA ONTARIO				
USED ON								MATERIAL		WEIGHT PER PC.		RECEPTACLE - PIN		
MAXIMUM ALLOWABLE TOLERANCES HAVE BEEN DETERMINED AND DEVIATIONS WILL BE CAUSE FOR REJECTION. REMOVE ALL BURRS AND SHARP EDGES				IF IT IS FOUND DESIRABLE TO CHANGE ANY TOLERANCE OR OTHER DETAIL SPECIFIED ON THIS DRAWING NOTIFY THE PURCHASER PROMPTLY.				TYPE & TEMPER		DRAWN		ELEC. DES. APP.		MECH. DES. APP.
TOLERANCES				SCALE				HEAT TREAT. SPEC.		CHECKED		FINAL APPROVAL		
ALL OTHERS		DEC. DIM. ± .005		.X = .05		DIMENSIONS IN INCHES UNLESS OTHERWISE SPECIFIED		FINISH & SPEC. NO.				37 10021		Ø
		FRAC. DIM. ± 1/64		.XX = .01		DRILL: PUNCH. COMMERCIAL STOCK SIZES AND MANUFACTURERS TOLERANCES ARE NOT INCLUDED.								
		ANGULAR DIM. ± 0° 30'		.XXX = .005										

ISSUE	ITEM	CHANGED FROM	DATE	CH. NO.	DRAFTS	CHECKER	ENG. APP.	REQ.	ITEM	PART NO.	DESCRIPTION	SYMBOL
-------	------	--------------	------	---------	--------	---------	-----------	------	------	----------	-------------	--------

0		PROP RELEASE	3 DEC 73									
---	--	--------------	----------	--	--	--	--	--	--	--	--	--



MANUFACTURER:

CONN MOLEY # 1396-P E/W
 (3) PINS MOLEY # 1434TL

Stock No.
250066

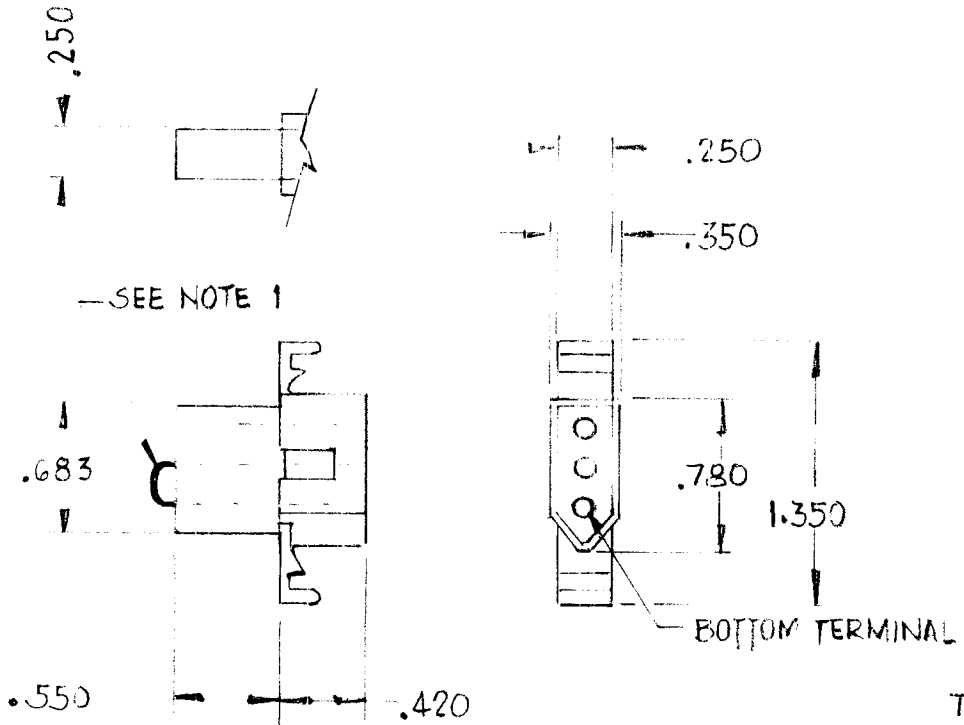
STANDARD		—		3 DEC 73		TMC (Canada) LIMITED		OTTAWA ONTARIO		
MODEL	PROJECT NO.	ASSY. NO.	DATE	STOCK SIZE		CONNECTOR				
USED ON				MATERIAL	WEIGHT PER PC.	3 PIN PLUG				
MAXIMUM ALLOWABLE TOLERANCES HAVE BEEN DETERMINED AND DEVIATIONS WILL BE CAUSE FOR REJECTION REMOVE ALL BURRS AND SHARP EDGES				IF IT IS FOUND DESIRABLE TO CHANGE ANY TOLERANCE OR OTHER DETAIL SPECIFIED ON THIS DRAWING NOTIFY THE PURCHASER PROMPTLY.				JMY		
TOLERANCES				SCALE 1:1		TYPE & TEMPER		DRAWN	ELEC. DES. APP.	MECH. DES. APP.
ALL OTHERS	DEC. DIM. ± .X = .05	DIMENSIONS IN INCHES UNLESS OTHERWISE SPECIFIED		HEAT TREAT. SPEC.		CHECKED		FINAL APPROVAL		
	FRAC. DIM. ± 1/64 .XX = .01	DRILL: PUNCH. COMMERCIAL STOCK SIZES AND MANUFACTURERS TOLERANCES ARE NOT INCLUDED.		FINISH & SPEC. NO.				JJ10030 0		
	ANGULAR DIM. ± 0° 30' .XXX = .005									

ISSUE	ITEM	CHANGED FROM	DATE	CN. NO.	DRAFTS	CHECKER	ENR. APP.	REQ	ITEM	PART NO.	DESCRIPTION	SYMBOL
-------	------	--------------	------	---------	--------	---------	-----------	-----	------	----------	-------------	--------

0		PROD RELEASE	30 Dec 73		mm							
---	--	--------------	-----------	--	----	--	--	--	--	--	--	--

NOTES:

- FOR JJ10031-1 - INSTALL (2) SOCKETS # 1433TL IN CENTER & BOTTOM TERM OF CONNECTOR & JUMPER THEM AS SHOWN.
- FOR JJ10031-2 - INSTALL (2) SOCKETS # 1433TL IN TOP & BOTTOM TERM OF CONNECTOR ONLY.



MANUFACTURER: CONN - MOLEX # 1396-R1
 SOCKETS: MOLEX # 1433TL

TMC PT NO'S

JJ10031-1 STOCK NO 250067
 JJ10031-2 STOCK NO 250068

STANDARD		-		-		3 DEC 73		TMC (Canada) LIMITED OTTAWA ONTARIO			
MODEL	PROJECT NO.	ASBY. NO.	DATE	STOCK SIZE							
USED ON				MATERIAL		WEIGHT PER PC.		CONNECTOR			
MAXIMUM ALLOWABLE TOLERANCES HAVE BEEN DETERMINED AND DEVIATIONS WILL BE CAUSE FOR REJECTION REMOVE ALL BURRS AND SHARP EDGES				IF IT IS FOUND DESIRABLE TO CHANGE ANY TOLERANCE OR OTHER DETAIL SPECIFIED ON THIS DRAWING NOTIFY THE PURCHASER PROMPTLY.				3 PIN RECEPTACLE			
								TYPE & TEMPER		DRAWN	
TOLERANCES				SCALE				HEAT TREAT. SPEC.		CHECKED	
ALL OTHERS:				DIMENSIONS IN INCHES UNLESS OTHERWISE SPECIFIED				FINISH & SPEC. NO.		FINAL APPROVAL	
DEC DIM. ± .05				DRILL: PUNCH. COMMERCIAL STOCK SIZES AND MANUFACTURERS TOLERANCES ARE NOT INCLUDED.						JJ10031-	
FRAC. DIM. ± 1/64										0	
ANGULAR DIM. ± 0° 30'											

ISSUE	ITEM	CHANGED FROM	DATE	CH. NO.	DRAFTS	CHECKER	ENG. APP.	REQ.	ITEM	PART NO.	DESCRIPTION	SYMBOL
Ø		PROD. RELEASE	3 DEC 73		JMN							

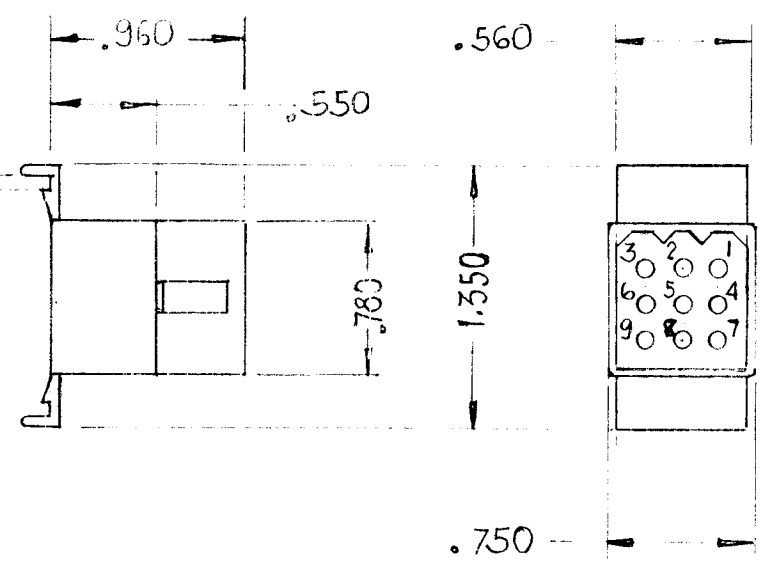
MFR: - SWITCHCRAFT # EAC 301

STOCK NO.
250070

STANDARD			3 Dec 73			TMC (Canada) LIMITED OTTAWA ONTARIO			
MODEL	PROJECT NO.	ASSY. NO.	DATE	STOCK SIZE		CONNECTOR			
USED ON				MATERIAL	WEIGHT PER PC	3 PIN RECEPTACLE			
MAXIMUM ALLOWABLE TOLERANCES HAVE BEEN DETERMINED AND DEVIATIONS WILL BE CAUSE FOR REJECTION REMOVE ALL BURRS AND SHARP EDGES				IF IT IS FOUND DESIRABLE TO CHANGE ANY TOLERANCE OR OTHER DETAIL SPECIFIED ON THIS DRAWING NOTIFY THE PURCHASER PROMPTLY.				JMN	
								DRAWN	ELEC. DES. APP.
TOLERANCES				SCALE					
ALL OTHERS DEC. DIM. ± .05 FRAC. DIM. ± 1/64 .XX = .01 ANGULAR DIM. ± 0° 30' .XXX = .005				DIMENSIONS IN INCHES UNLESS OTHERWISE SPECIFIED DRILL: PUNCH. COMMERCIAL STOCK SIZES AND MANUFACTURERS TOLERANCES ARE NOT INCLUDED.				CHECKED	FINAL APPROVAL
				HEAT TREAT. SPEC.				JJ10032	Ø
				FINISH & SPEC. NO.					

ISSUE	ITEM	CHANGED FROM	DATE	CH. NO.	DRAFTS	CHECKER	ENG. APP.	REQ	ITEM	PART NO.	DESCRIPTION	SYMBOL
0		PROD RELEASE	2 JAN 74		LM							

.810 MAX PNL THICKNESS



MFR: MOLEX # 1292 F
E/W PINS # 1434 TL

NOTES:

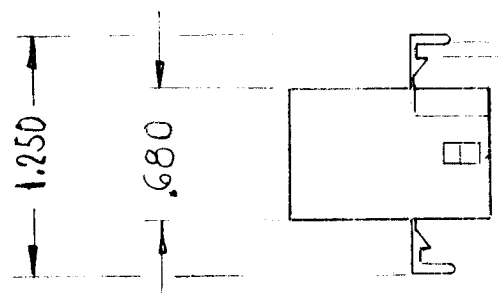
1. RECOMENDED PNL CUTOUT
.950 x .660
2. THIS CONNECTOR MATES WITH JJ10034

STOCK NOS.
250132

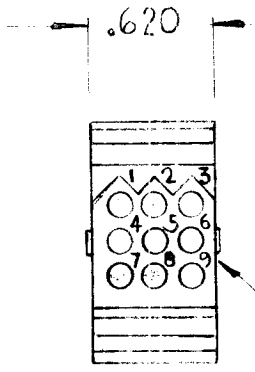
MODEL		PROJECT NO.		ASSY. NO.		DATE		STOCK SIZE		TMC (Canada) LIMITED OTTAWA ONTARIO	
		040001		CA10681		JAN 2 1974				CONNECTOR	
								MATERIAL		WEIGHT PER PC	
										9 PINS PLUG	
								TYPE & TEMPER		DRAWN	
										ELEC. DES. APP.	
										MECH. DES. APP.	
								HEAT TREAT. SPEC.		CHECKED	
										FINAL APPROVAL	
										JJ10033	
										Ø	

ISSUE	ITEM	CHANGED FROM	DATE	CN. NO.	DRAFTS	CHECKER	ENG. APP.	REQ.	ITEM	PART NO.	DESCRIPTION	SYMBOL
-------	------	--------------	------	---------	--------	---------	-----------	------	------	----------	-------------	--------

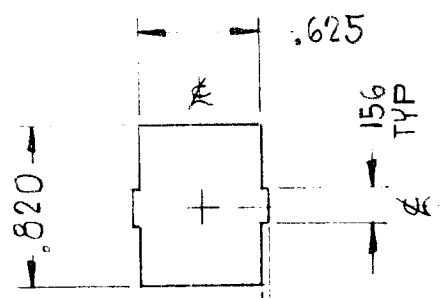
0 PROD RELEASE 2 JAN 74 JM



.081 MAX PNL THICKNESS



TERM. REF NOS.



.032 TYP RECOMMENDED PANEL CUTOUT

NOTES

1. THIS CONNECTOR MATES WITH JJ10033.

MFR - MOLEX #1292R
E/W SOCKETS #1433 TL

STOCK NO'S
250133

MODEL		PROJECT NO.		ASSY. NO.		DATE		STOCK SIZE		TMC (Canada) LIMITED OTTAWA ONTARIO					
040001		A11111		JAN 2, 1974											
USED ON								MATERIAL		WEIGHT PER PC		CONNECTOR			
MAXIMUM ALLOWABLE TOLERANCES HAVE BEEN DETERMINED AND DEVIATIONS WILL BE CAUSE FOR REJECTION REMOVE ALL BURRS AND SHARP EDGES				IF IT IS FOUND DESIRABLE TO CHANGE ANY TOLERANCE OR OTHER DETAIL SPECIFIED ON THIS DRAWING NOTIFY THE PURCHASER PROMPTLY.				TYPE & TEMPER		HEAT TREAT. SPEC.		DRAWN		ELEC. DES. APP.	MECH. DES. APP.
												DRAWN		ELEC. DES. APP.	MECH. DES. APP.
TOLERANCES				SCALE				FINISH & SPEC. NO.		CHECKED		FINAL APPROVAL			
ALL OTHERS		DEC. DIM. ± .05		.X = .05		DIMENSIONS IN INCHES UNLESS OTHERWISE SPECIFIED									
		FRAC. DIM. ± 1/64		.XX = .01		DRILL; PUNCH. COMMERCIAL STOCK SIZES AND MANUFACTURERS TOLERANCES ARE NOT INCLUDED.									
		ANGULAR DIM. ± 0° 30'		.XXX = .005								JJ10034			