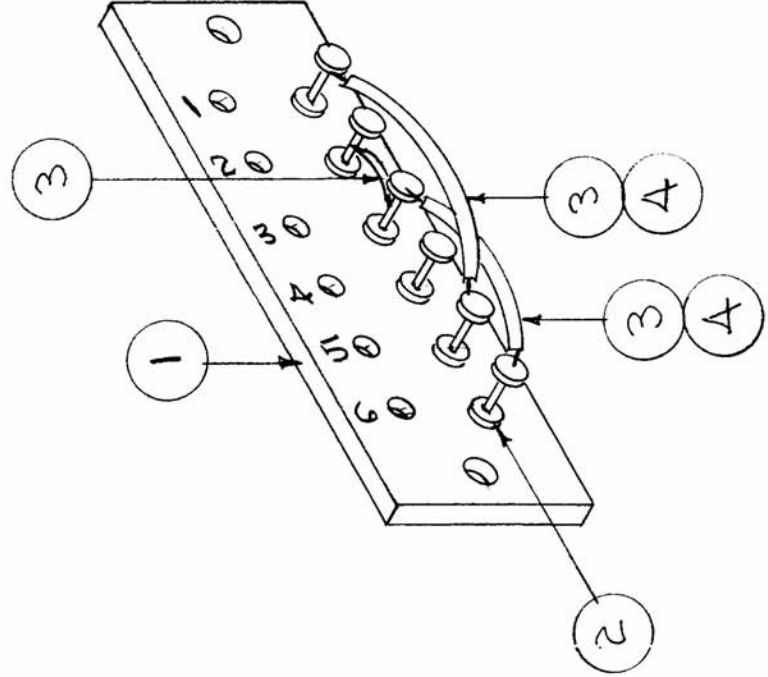


REQ. PER UNIT	USED ON	MODEL	ASSY. NO.	DATE
2		XFK	A-146	
				IN-1005



STAMP AS SHOWN - 1/8 HIGH BLACK GOTHIC

THIS DRAWING FOR SPARE PARTS ONLY.
FOR PRODUCTION ASSEMBLY SEE
DRAWING A-146.

REQ. ITEM	PART NO.	DESCRIPTION	SYMBOL
X 5	BS-100	SOLDER, SOFT	
X 4	PX-104-5-.038	INSULATION, SLEEVING	
X 3	WL-100-11	WIRE, BUSS BAR	
6 2	TE-105-4	TERMINAL	
1 1	PX-108	BOARD, TERMINAL	

THE TECHNICAL MATERIEL CORP. MAMARONECK, NEW YORK	
HEATER TERMINAL BOARD	
SUB ASSEMBLY XFK	
DATE	DRAWN
000 5/21/57	
CHECKED	FINAL APPROVAL
	J.A.
IN-1005	

ISSUE ITEM	CHANGED FROM	DATE	CH. NO.	DRAFTS	CHECKER	ENG. APP.
TOLERANCES						
SCALE:						
MAXIMUM ALLOWABLE TOLERANCES HAVE BEEN DETERMINED AND ANY DEVIATIONS WILL BE CAUSE FOR REJECTION. REMOVE ALL BURRS AND SHARP EDGES						
DEC. DIM.	±					
FRAC. DIM.	±					
ANGULAR DIM.	±					