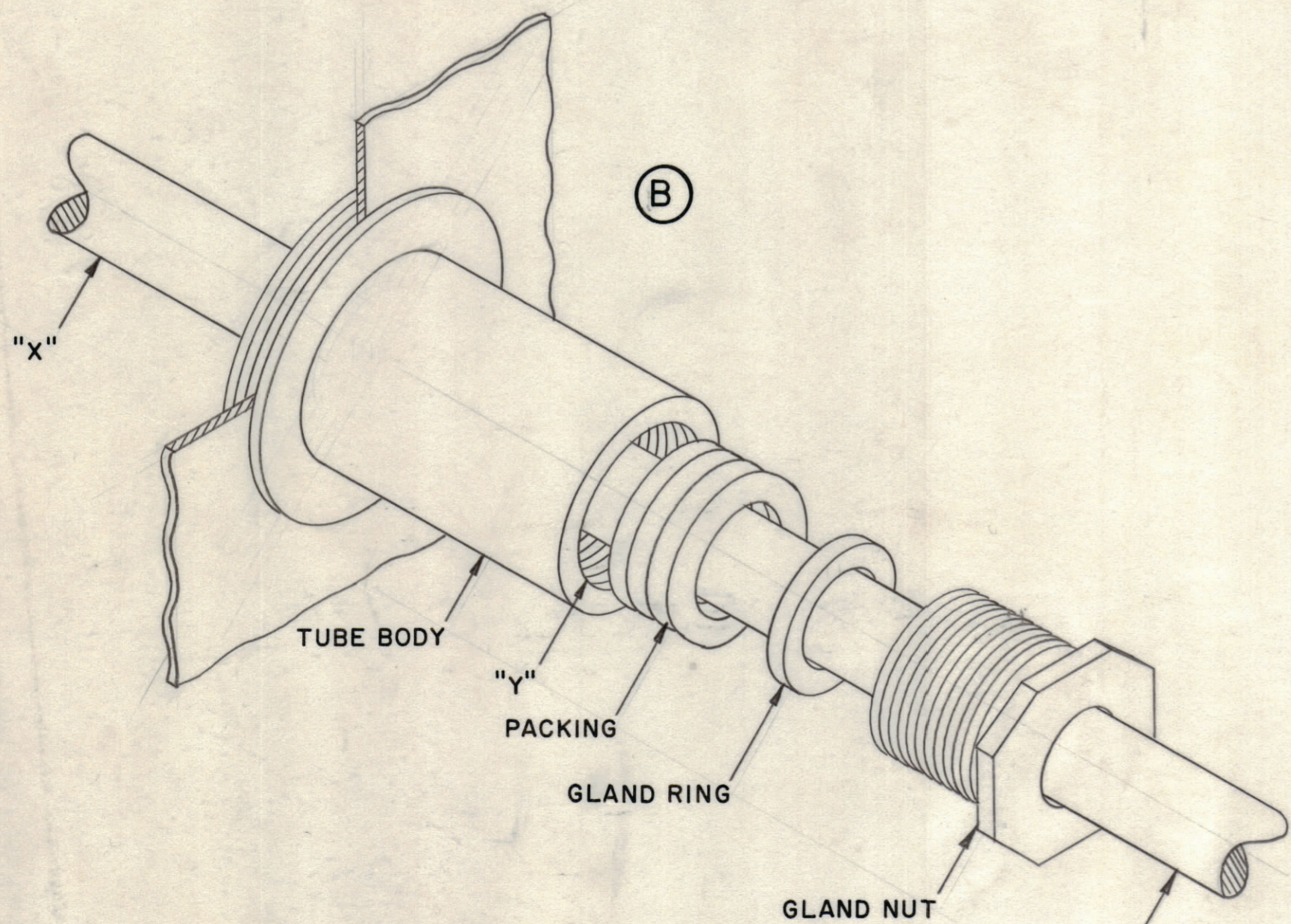
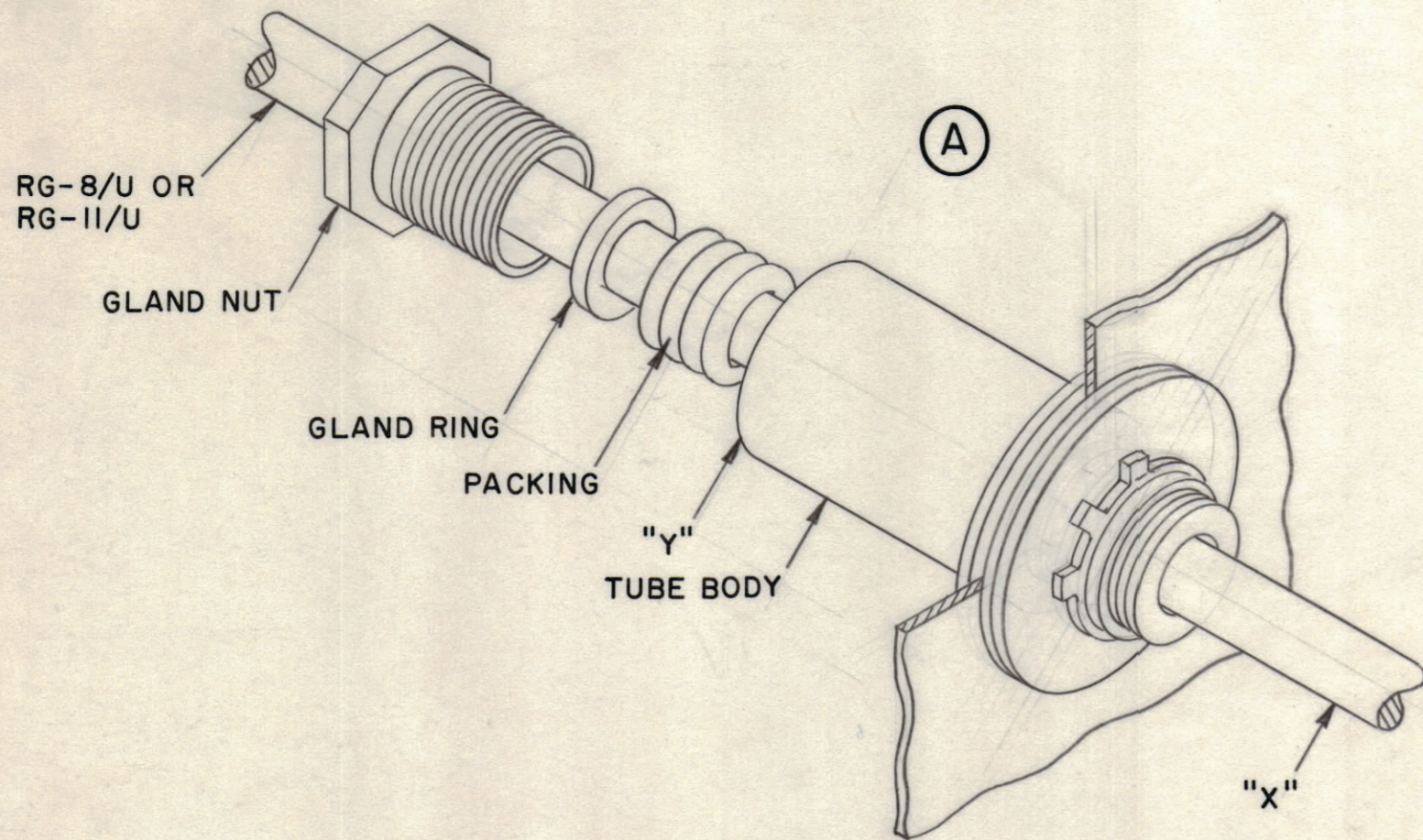


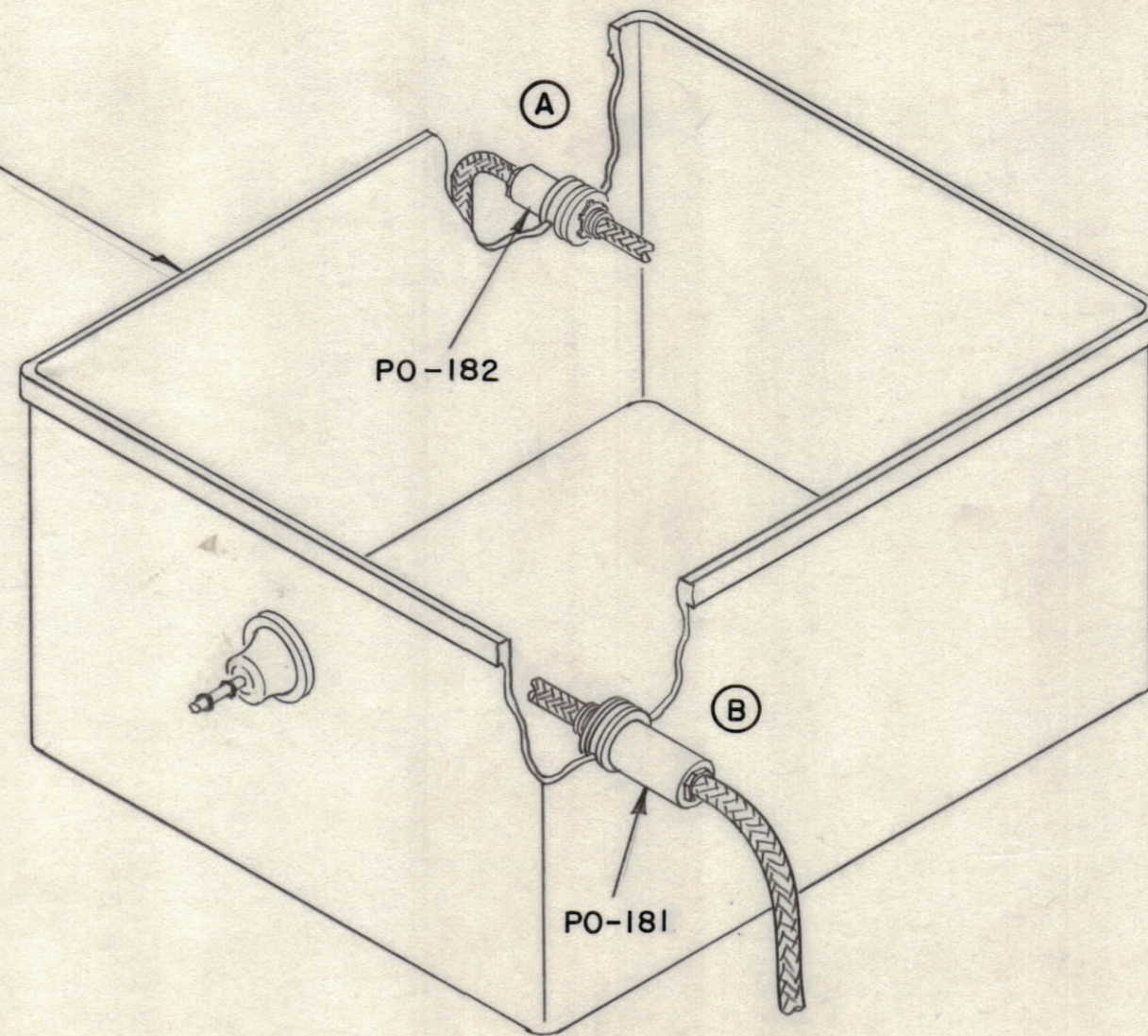
IF IT IS FOUND DESIRABLE TO CHANGE ANY TOLERANCE OR OTHER DETAIL SPECIFIED ON THIS DRAWING NOTIFY THE PURCHASER PROMPTLY.

MAXIMUM ALLOWABLE TOLERANCES HAVE BEEN DETERMINED AND DEVIATIONS WILL BE CAUSE FOR REJECTION. REMOVE ALL BURRS AND SHARP EDGES.



10 CONDUCTOR ARMORED CABLE
OR TMC WI-112-7-XX

ATS-2
TUNER



TERMINAL TUBE LOCATION

NOTE

1. REMOVE FROM TUBE BODY, GLAND NUT AND GLAND RING.
2. INSERT CABLE THROUGH GLAND NUT, GLAND RING AND TUBE BODY. ALLOW ENOUGH CABLE AT "X" FOR STRIPPING AND CONNECTION TO TERMINAL BOARD.
3. WIND PACKING AROUND CABLE AND PRESS INTO TUBE TO WITHIN 3/8" OF "Y" TO ALLOW FOR GLAND RING AND GLAND NUT.

NOTICE TO PERSONS RECEIVING THIS DRAWING
THE TECHNICAL MATERIEL CORPORATION claims
proprietary right in the material disclosed hereon.
This drawing is issued in confidence for engineering
information only and may not be reproduced or used
to manufacture anything shown hereon without per-
mission from THE TECHNICAL MATERIEL CORPORA-
TION to the user. This drawing is loaned for mutual
assistance and is subject to recall at any time.

Property of:
THE TECHNICAL MATERIEL CORPORATION
MAMARONECK, NEW YORK

1N-1099

ORIG REL FOR PROD 4/10/69		GE					
ISSUE	ITEM	CHANGED FROM	DATE	CH. NO.	DRAFTS	CHECKER	ENG. APP.
TOLERANCES			SCALE:				
ALL OTHERS	DEC. DIM. ±	FRAC. DIM. ±	DRILL, PUNCH, COMMERCIAL STOCK SIZES AND MANUFACTURERS TOLERANCES ARE NOT INCLUDED.				
		ANGULAR DIM. ±					

REQ. PER UNIT	MODEL	PROJECT NO.	ASSY. NO.	DATE

REQ. ITEM	PART NO.	DESCRIPTION	SYMBOL
THE TECHNICAL MATERIEL CORP. MAMARONECK, NEW YORK			
STOCK SIZE			
ASSEMBLY INSTRUCTIONS FOR			
TERMINAL TUBES - MODEL ATS-2			
MATERIAL		WEIGHT PER PC.	
TYPE & TEMPER		MJT 8-27-59	
HEAT TREAT. SPEC.		CHECKED	FINAL APPROVAL
FINISH & SPEC. NO.			