

IN-1035

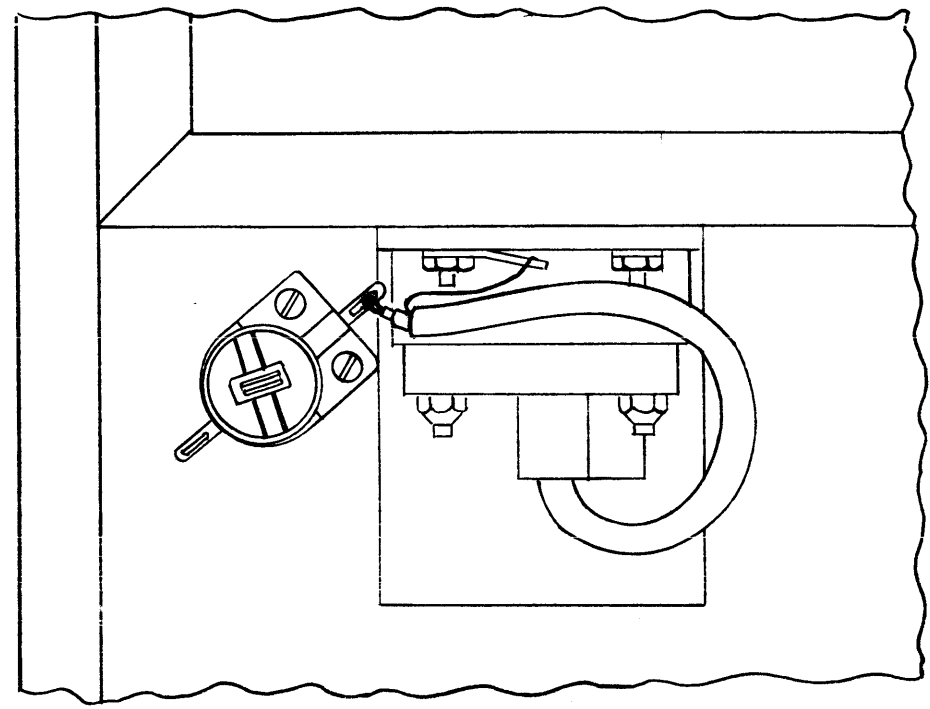


FIGURE 1

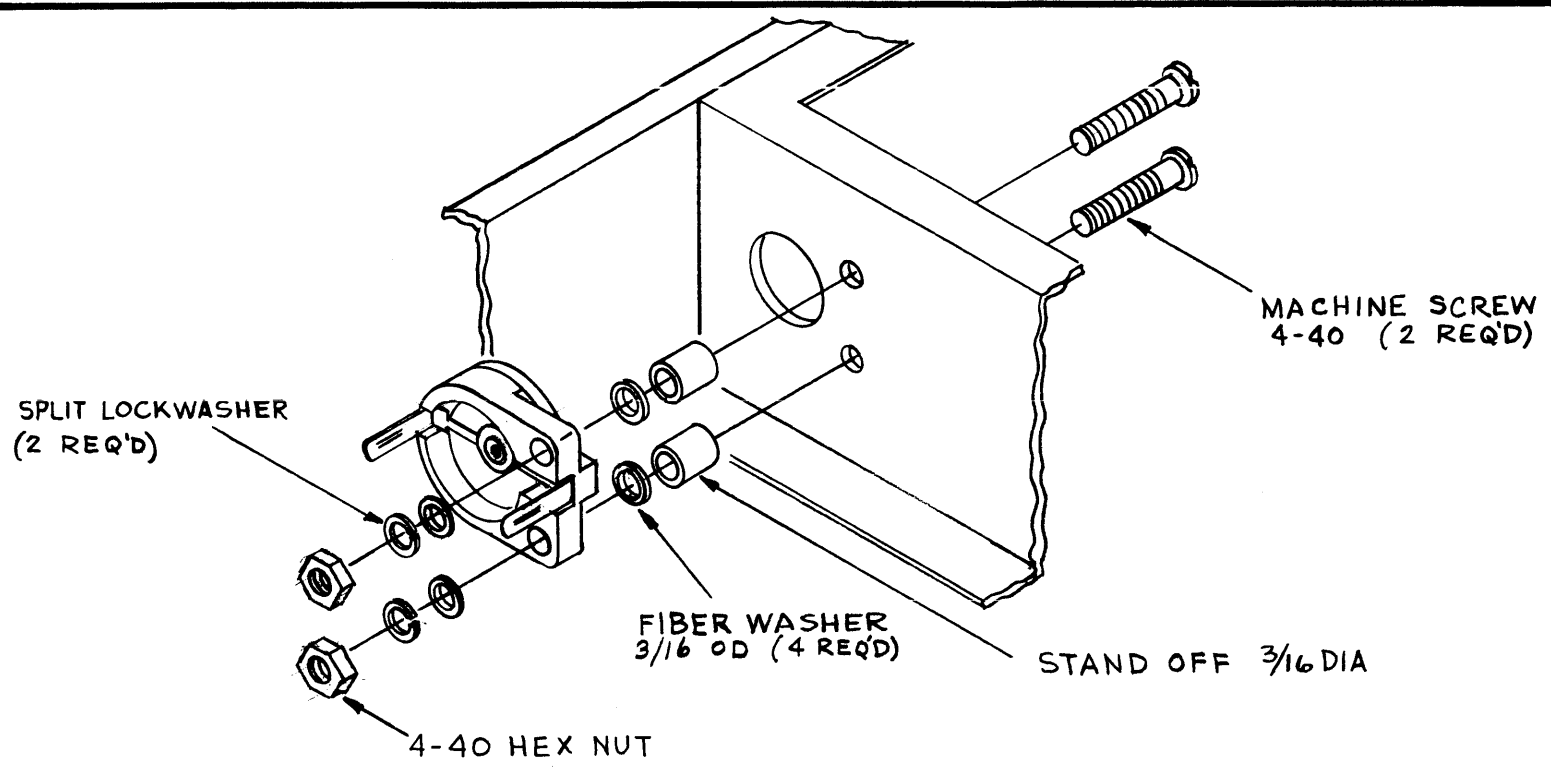
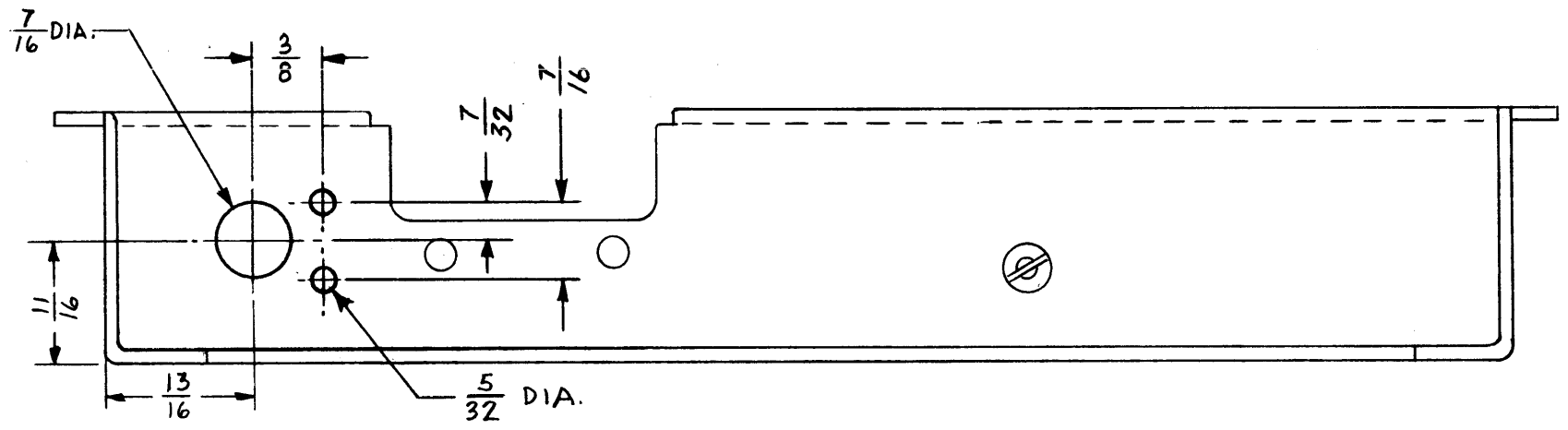


FIGURE 2



DRILLING PLAN

NOT TO BE REPRODUCED FROM THIS DRAWING

THE TECHNICAL MATERIEL CORPORATION claims proprietary right in the material disclosed herein. This drawing is issued in confidence for engineering information only and may not be reproduced or used to manufacture anything shown herein without permission from THE TECHNICAL MATERIEL CORPORATION to the user. This drawing is loaned for mutual assistance and is subject to recall at any time.

Property of:  
THE TECHNICAL MATERIEL CORPORATION  
MAMARONECK, NEW YORK

1. Drill holes of sizes shown and in positions shown in DRILLING PLAN.
2. Remove C100 from present location (See Figure 1)
3. Retain all hardware.
4. Replace C100 in new position as shown in Figure 2.

ISSUE	ITEM	CHANGED FROM	DATE	CH. NO.	DRAFTS	CHECKER	ENG. APP.
TOLERANCES			SCALE:				
DEC. DIM. ±			MAXIMUM ALLOWABLE TOLERANCES HAVE BEEN DETERMINED AND ANY DEVIATIONS WILL BE CAUSE FOR REJECTION. REMOVE ALL BURRS AND SHARP EDGES				
FRAC. DIM. ±							
ANGULAR DIM. ±							

REQ. PER UNIT	MODEL	PROJECT NO.	ASS'Y. NO.	DATE
USED ON				

REQ. ITEM	PART NO.	DESCRIPTION	SYMBOL
		THE TECHNICAL MATERIEL CORP. MAMARONECK, NEW YORK	
STOCK SIZE		FIELD CONVERSION - REPLACEMENT	
MATERIAL		OF C100	MODEL FFR
TYPE & TEMPER		HEAT TREAT. SPEC.	DATE
FINISH & SPEC. NO.		ELEC. DES. APP.	MECH. DES. APP.
		9-19-58	MIT
		DRAWN	CHECKED
		FINAL APPROVAL	
		IN-1035	