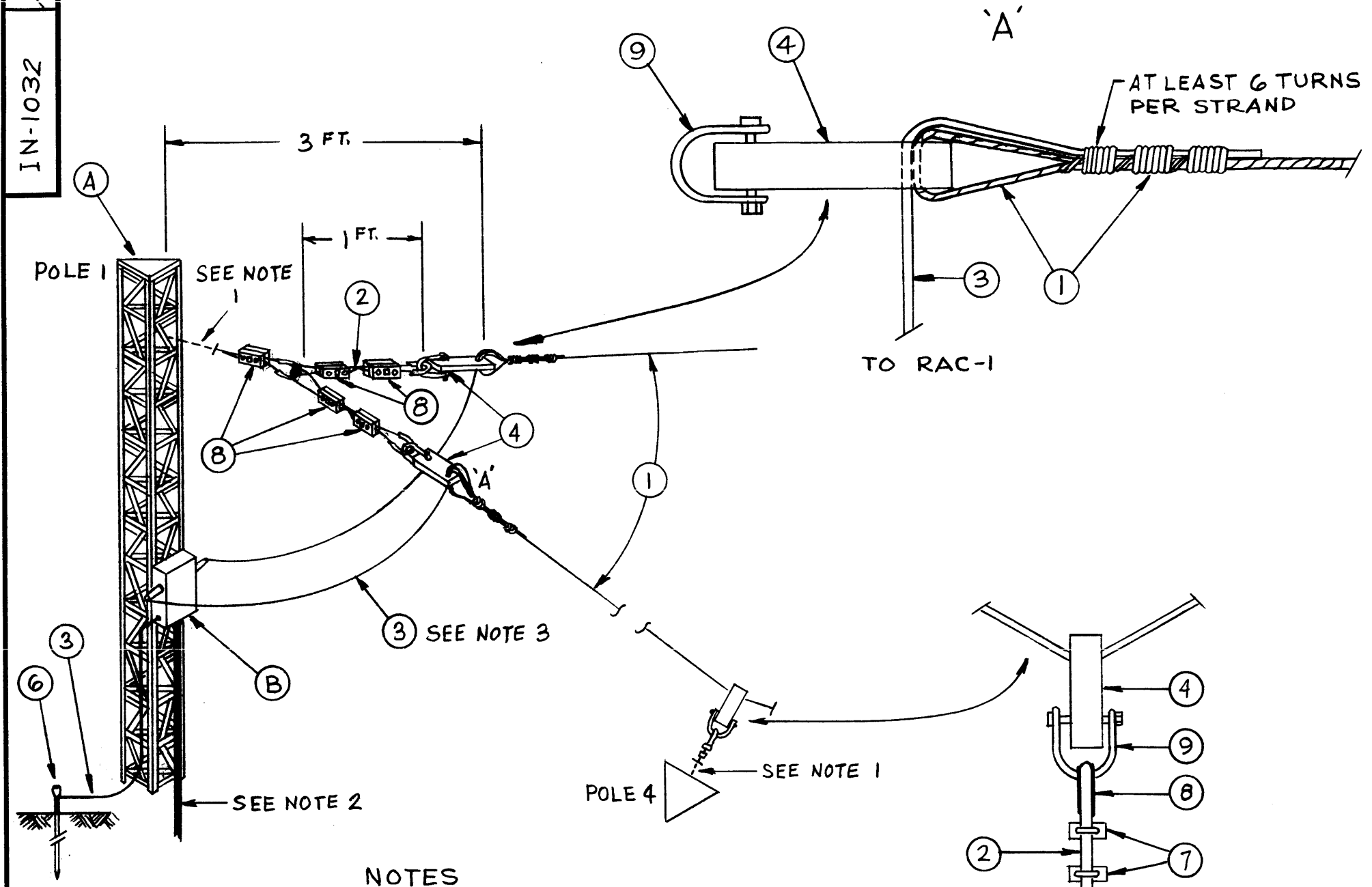


IN-1032



NOTICE TO PERSONS RECEIVING THIS DRAWING

THE TECHNICAL MATERIEL CORPORATION claims proprietary right in the material disclosed hereon. This drawing is issued in confidence for engineering information only and may not be reproduced or used to manufacture anything shown hereon without permission from THE TECHNICAL MATERIEL CORPORATION to the user. This drawing is loaned for mutual assistance and is subject to recall at any time.

Property of:
 THE TECHNICAL MATERIEL CORPORATION
 MAMARONECK, NEW YORK

NOTES

- 1- CONNECTION HARNESS TO TOWER TO AGREE WITH TOWER REQUIREMENTS.
- 2- COAXIAL CABLE TO MATCH 70 OHM IMPEDANCE.
- 3- DISTANCE BETWEEN ANTENNA AND RAC-1 NOT TO EXCEED 6 FEET.
- 4- BOTH END POLES IDENTICAL.
- 5- BOTH SIDE POLES IDENTICAL.

REQ. ITEM	PART NO.	DESCRIPTION	SYMBOL
6	9	SHACKLE, 3/8", TO FIT ITEM 4	
10	8	CLAMP, GUY, 3 BOLT, GALV. IRON	
4	7	CLIP WIRE ROPE, 5/16, GALV. STEEL	
2	6	GROUND ROD, 1/2" X 6' GALV. IRON	
8	5	THIMBLE, STEEL, GALV., FOR 5/16" ROPE	
6	4	INSULATOR STRAIN, 10"	
200'	3	WIRE #6, COPPER, SOFT DRAWN	
100'	2	WIRE, 5/16, MESSENGER, GALV. STEEL-60001b	
2000'	1	WIRE (3 STRAND #12) COPPERWELD	
2	B	RAC-1	RHOMBIC ANTENNA COUPLER
	A		METAL TOWER- CUSTOMER FURNISHED
		THE TECHNICAL MATERIEL CORP. MAMARONECK, NEW YORK	
		STOCK SIZE	
		MATERIAL	
		RAC-1 INSTALLATION DETAIL & MATERIAL LIST FOR 3000 MILE RHOMBIC- RECEIVING	
		6-25-58 M.J.T.	
		TYPE & TEMPER HEAT TREAT. SPEC. DRAWN CHECKED FINAL APPROVAL	
		FINISH & SPEC. NO. ELEC. DES. APP. MECH. DES. APP.	

ISSUE	ITEM	CHANGED FROM	DATE	CH. NO.	DRAFTS	CHECKER	ENG. APP.
			8/14/67				
TOLERANCES		SCALE:					
DEC. DIM. ±		MAXIMUM ALLOWABLE TOLERANCES HAVE BEEN DETERMINED AND ANY DEVIATIONS WILL BE CAUSE FOR REJECTION. REMOVE ALL BURRS AND SHARP EDGES					
FRAC. DIM. ±							
ANGULAR DIM. ±							

REQ. PER UNIT	MODEL	PROJECT NO.	ASS'Y. NO.	DATE

USED ON

IN-1032