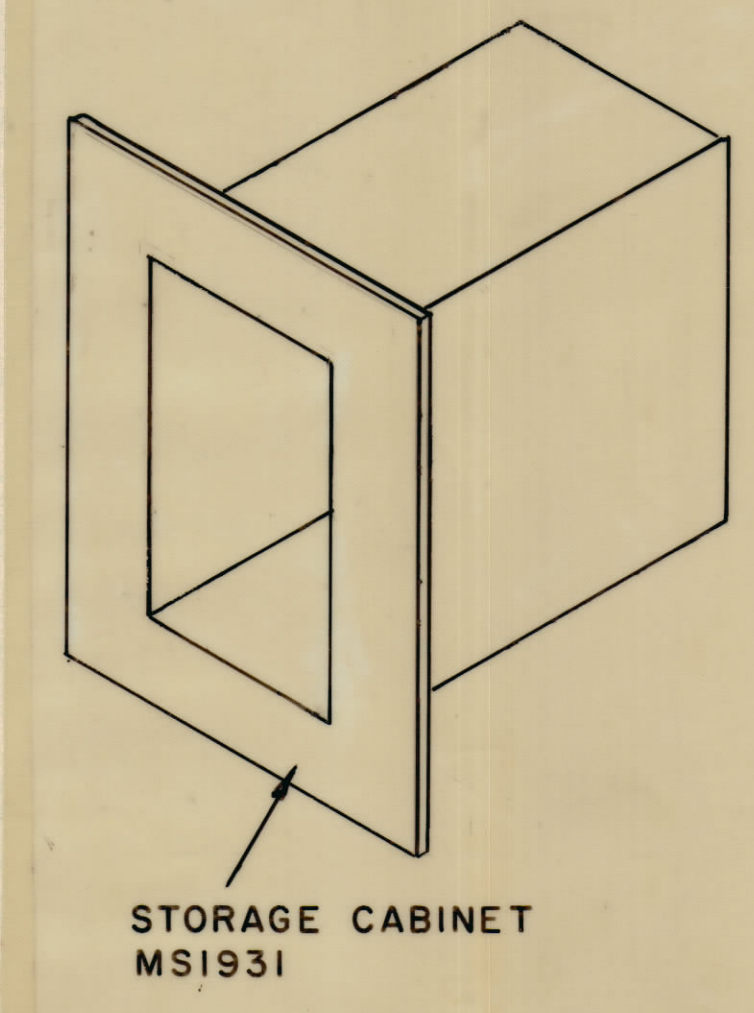




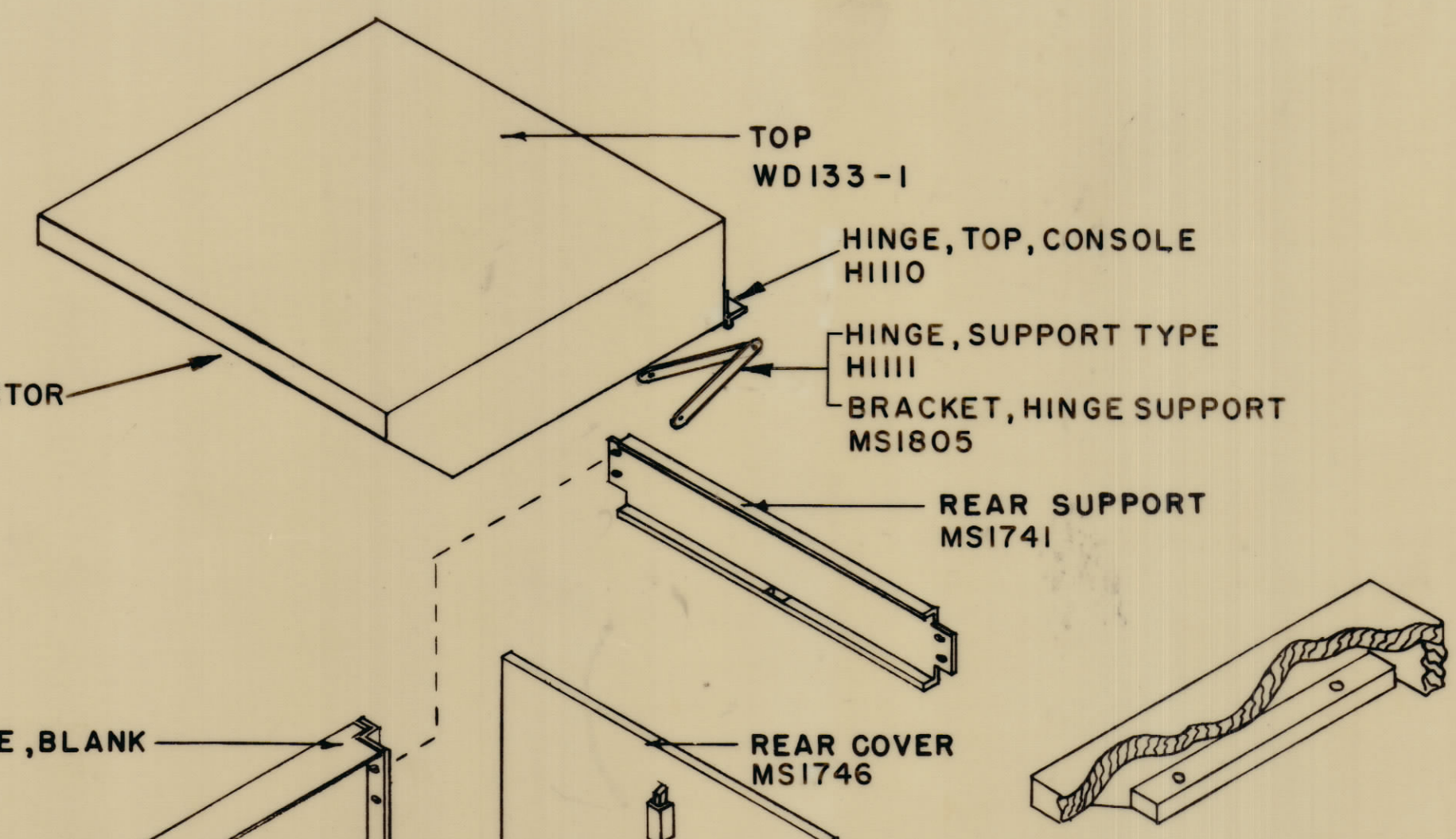


NOTICE TO PERSONS RECEIVING THIS DRAWING  
 THE TECHNICAL MATERIEL CORPORATION claims proprietary right in the material disclosed herein. This drawing is issued in confidence for engineering information only and may not be reproduced or used to manufacture anything shown hereon without permission from THE TECHNICAL MATERIEL CORPORATION to the user. This drawing is loaned for mutual assistance and is subject to recall at any time.

Property of:  
 THE TECHNICAL MATERIEL CORPORATION  
 MAMARONECK, NEW YORK



LIGHT FIXTURE REFLECTOR  
 MS1934  
 PLEXIGLASS  
 PX843-1



LEFT SIDE PLATE, BLANK  
 MS1736

MS1738  
 TOP FRONT SUPPORT

ST103-1-12  
 TOGGLE  
 SWITCH  
 HERE

TIGHTEN TO  
 SECURE DESK  
 SUPPORTS

MS1742  
 RIGHT SIDE PLATE, CONNECTING (FOR MULTIPLE  
 UNITS ONLY. BLANK SIDE PLATE WILL BE FURNISHED FOR SINGLE CONSOLE - MS1737)

LEFT SIDE PLATE,  
 CONNECTING  
 MS1743

POWER BOX  
 (P/O BASE)

BASE  
 MS1740

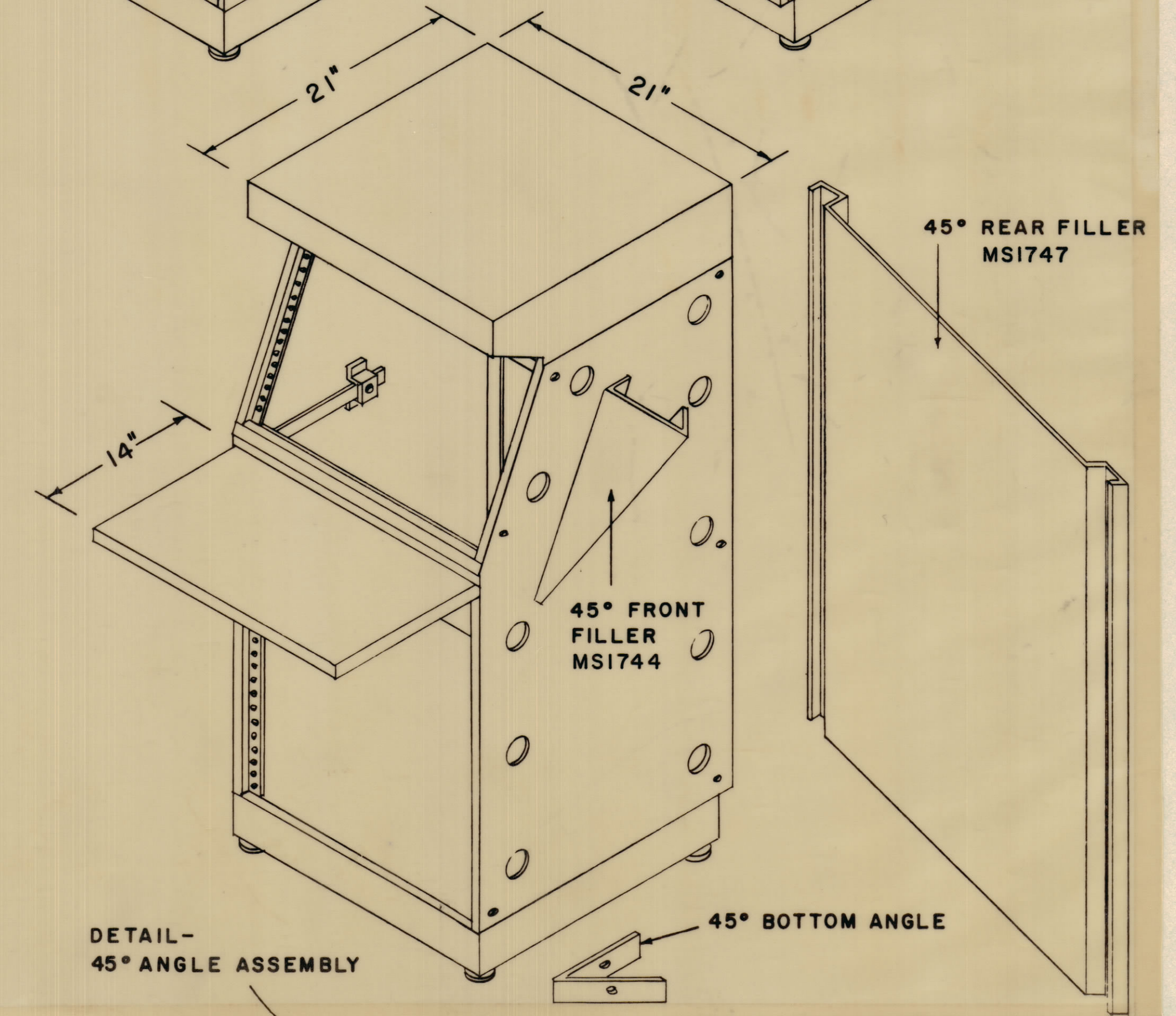
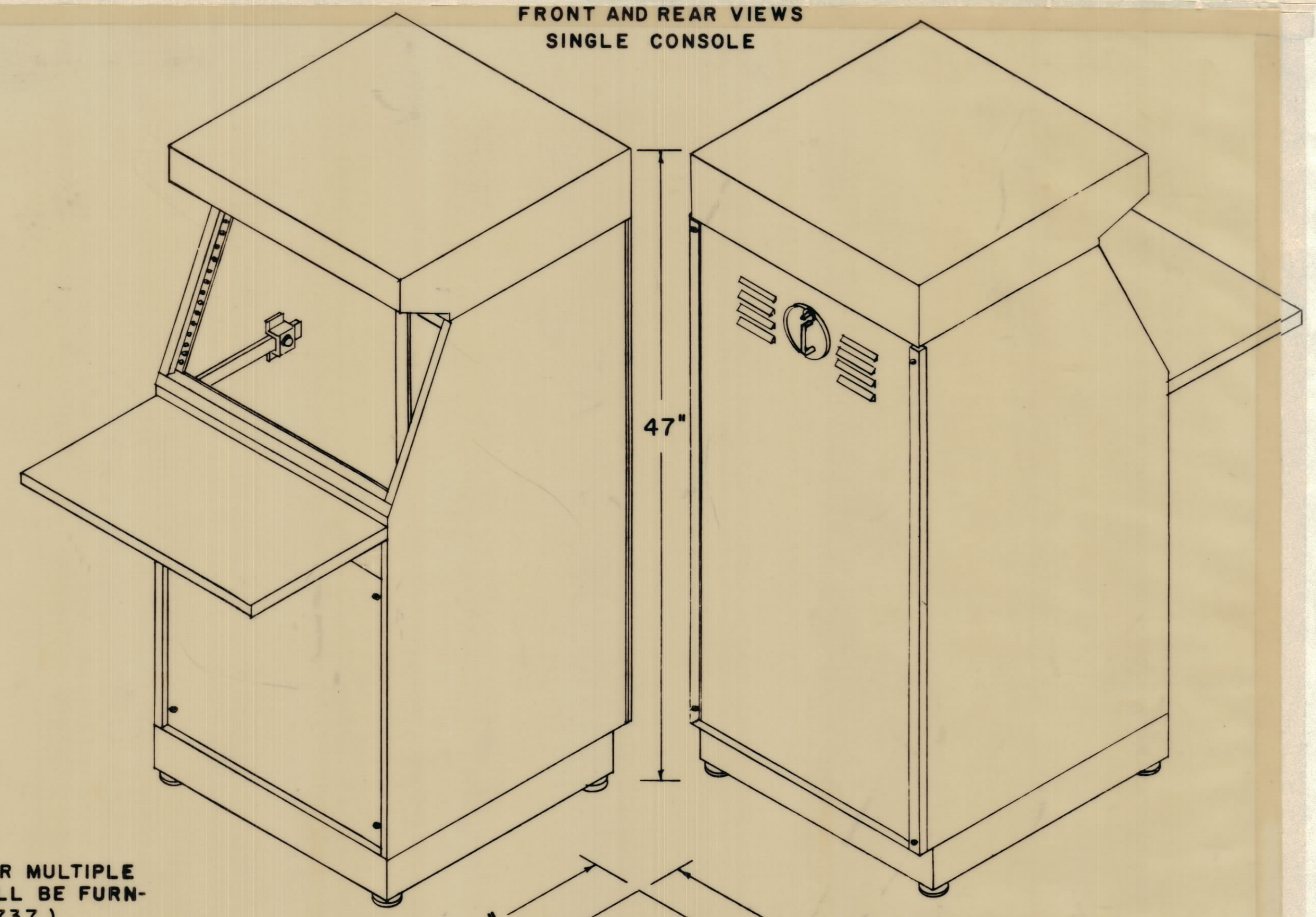
ADJUST TO LEVEL  
 CONSOLE  
 P0308-1

FRONT PANEL, BLANK  
 MS1750

CASTER, SWIVEL  
 WH100-1

CASTER, RIGID  
 WH100-2

FRONT AND REAR VIEWS  
 SINGLE CONSOLE



DETAIL -  
 45° ANGLE ASSEMBLY

45° BOTTOM ANGLE

REVISIONS							
ZONE	SYM	DESCRIPTION	DATE	E.M.N. NO.	DRAFT	CHKD	APPD

REQ'D	ITEM	PART NUMBER	DESCRIPTION	SYMBOL
LIST OF MATERIAL				
MATERIAL				
THE TECHNICAL MATERIEL CORP. MAMARONECK, NEW YORK				
FINISH				
TITLE				
ASSEMBLY INSTRUCTIONS MODEL CON				
QTY./UNIT	MODEL USED ON	ASSY. NO.	DRAWN	DATE
SCALE	CODE		J.L.	7/14/66
UNLESS OTHERWISE SPECIFIED DIMENSIONS ARE IN INCHES AND INCLUDE CHEMICALLY APPLIED OR PLATED FINISHES			CHECKED	DATE
THE CONTENTS OF THIS DRAWING ARE THE EXCLUSIVE PROPERTY OF THE TECHNICAL MATERIEL CORP. ITS UNAUTHORIZED USE OR REPRODUCTION IN WHOLE OR IN PART IS STRICTLY FORBIDDEN.			ELECT. DES.	DATE
DECIMALS	TOLERANCES	FRACTIONS	MECH. DES.	DATE
.X ± .05		± 1/64		
.XX ± .01		ANGLES		
XXX ± .005		± 0° 30'		
SHEET 2 OF 2				REV. LTR.

NOTES

IN1023