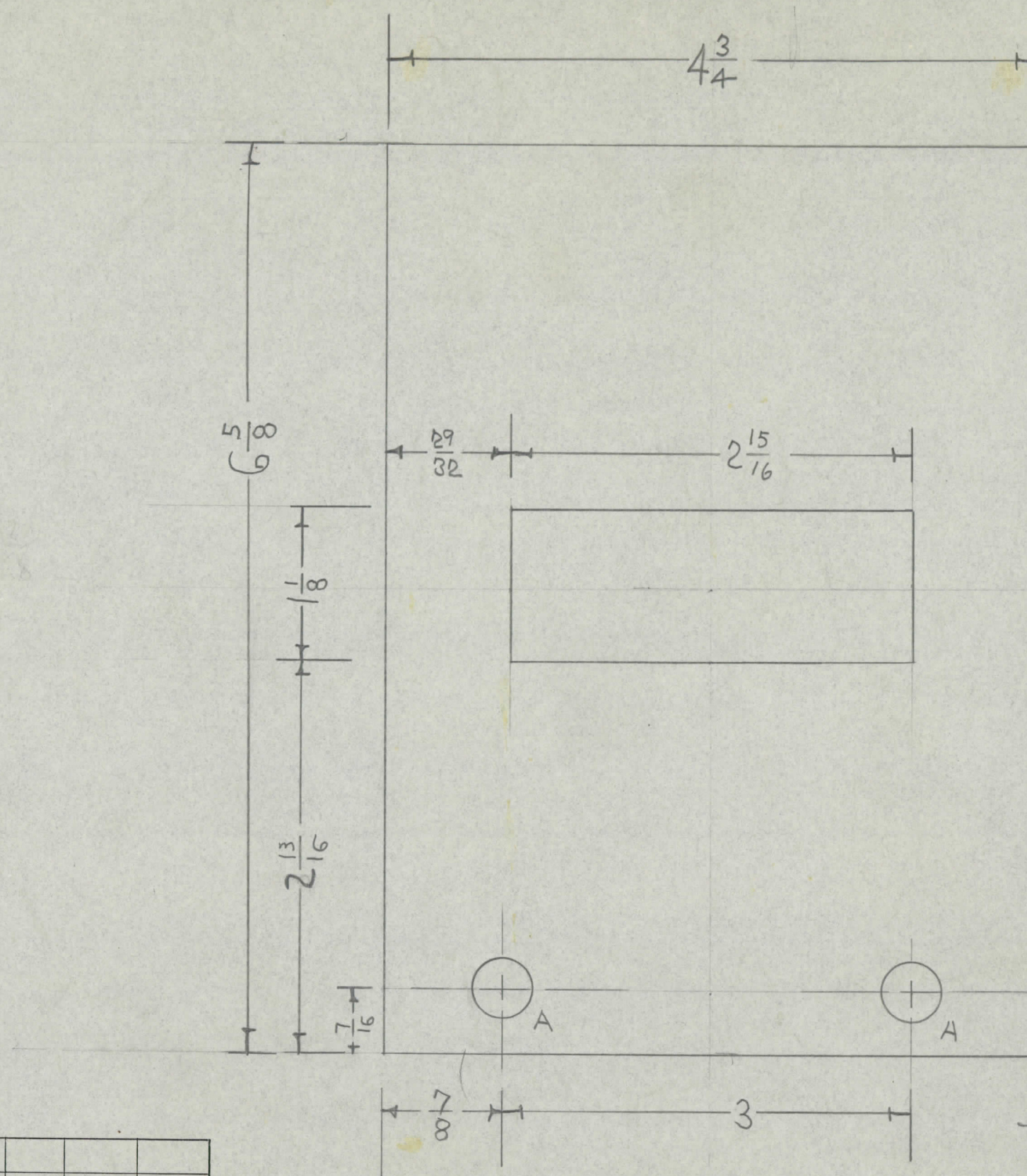


IM-173



A = 7/16 (437)D 2 REQ.

NOTICE TO PERSONS RECEIVING THIS DRAWING

THE TECHNICAL MATERIEL CORPORATION claims proprietary right in the material disclosed herein. This drawing is issued in confidence for engineering information only and may not be reproduced or used to manufacture anything shown hereon without permission from THE TECHNICAL MATERIEL CORPORATION to the user. This drawing is loaned for mutual assistance and is subject to recall at any time.

Property of:

THE TECHNICAL MATERIEL CORPORATION  
MAMARONECK, NEW YORK

REF: JOHNS MANVILLE

ISSUE	ITEM	CHANGED FROM	DATE	CH. NO.	DRAFTS	CHECKER	ENG. APP.
TOLERANCES			SCALE: 2-986				
DEC. DIM. ±			MAXIMUM ALLOWABLE TOLERANCES HAVE BEEN DETERMINED AND ANY DEVIATIONS WILL BE CAUSE FOR REJECTION. REMOVE ALL BURRS AND SHARP EDGES				
FRAC. DIM. ±							
ANGULAR DIM. ±							

1	SBE-3		AD-102		
1	SBE-1a2	380		7-23-57	
REQ. PER UNIT	MODEL	PROJECT NO.	ASS'Y. NO.	DATE	

REQ. ITEM	PART NO.	DESCRIPTION	SYMBOL
	1/2 THK.	THE TECHNICAL MATERIEL CORP.	
	STOCK SIZE	MAMARONECK, NEW YORK	
	BUILDING BOARD	INSULATOR, REAR XTAL OVEN	
	MATERIAL	SBE-1	
	11		RB
	11		RWB
	11		ARB
			1M-173

USED ON